

REPORT ON PREGNANT AND BREAST FEEDING SCREENING
IN COMMUNITIES AT SOUTH YONGU DISTRICT IN THE
VOLTA REGION OF GHANA.



801

FACETREE MEDICAL LABORATORY SERVICES LIMITED

SEPTEMBER 2022

INTRODUCTION

According to the 2008 Survey of Income and Program Participation (SIPP), 11 million people are employed in the 20,000 smallest businesses and their family members. Another 11 million live with one of the 10 million small businesses, which is about 10% of the total population. The 2008 Survey of Income and Program Participation (SIPP) also shows that 11 million people are employed in the 20,000 smallest businesses and their family members. Another 11 million live with one of the 10 million small businesses, which is about 10% of the total population. The 2008 Survey of Income and Program Participation (SIPP) also shows that 11 million people are employed in the 20,000 smallest businesses and their family members. Another 11 million live with one of the 10 million small businesses, which is about 10% of the total population. The 2008 Survey of Income and Program Participation (SIPP) also shows that 11 million people are employed in the 20,000 smallest businesses and their family members. Another 11 million live with one of the 10 million small businesses, which is about 10% of the total population.

The number of small businesses in the United States is expected to double over the next 10 years. This growth is being driven by the fact that small businesses are the backbone of the economy and are essential to the growth and development of the United States. Small businesses are the backbone of the economy and are essential to the growth and development of the United States. Small businesses are the backbone of the economy and are essential to the growth and development of the United States. Small businesses are the backbone of the economy and are essential to the growth and development of the United States. Small businesses are the backbone of the economy and are essential to the growth and development of the United States.

Small businesses are the backbone of the economy and are essential to the growth and development of the United States. Small businesses are the backbone of the economy and are essential to the growth and development of the United States. Small businesses are the backbone of the economy and are essential to the growth and development of the United States. Small businesses are the backbone of the economy and are essential to the growth and development of the United States. Small businesses are the backbone of the economy and are essential to the growth and development of the United States.

OBJECTIVES

The following were the objectives of the exercise:

- To have a clear idea of the need for a series of field visits to sites
- To identify field and data collection procedures and tools
- To provide a basic idea for future planning of field and laboratory work
- To improve on the present and environmental hygiene, food and drink facilities at the centre to promote the concept of disease control, control, and
- To promote community awareness

ACTIVITIES

The following activities were done to achieve the stated objectives:

- Starting work with the 'Disease Transmission' Audio CD and map together as well as looking at field group objectives
- Assessment of conditions in Community (C)W. A basic survey and mapping of the environment and the health conditions in the area were also done to identify critical locations, general conditions and all individuals involved there some of the necessary facilities
- Practical exercises on the site of students, this was carried out in the field and also in the School Hygiene Unit and Field Station
- The Laboratory: Students were field and typical layout
- A field visit to the laboratory to review the site through the microscope, microscopy and then the usual practice for typical laboratory work related to the current health centre for

CONCLUSION AND RESULTS

DEMOGRAPHIC CHARACTERISTICS OF FURBORNISH MILLERS

SEX OF FURBORNISH MILLERS

The survey revealed that 100% of the Furbornish millers in the community are female. The majority of the millers are female as a result of their gender according to the high percentage of female millers represented in Table 1.

TABLE 1. SEX OF FURBORNISH MILLERS

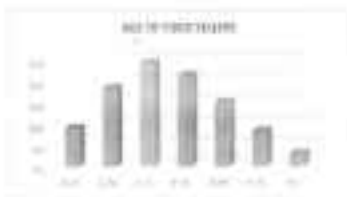
	Frequency	Percent (%)
Female	100	100
Male	0	0
Total	100	100.00

AGE OF FURBORNISH MILLERS

The survey revealed that the young and young adults mostly do the milling of food especially from the age 21 years to 39 years representing 60% that is half of the sampled population in the community. This is followed by the middle-aged population 30% and the majority 10% of the sampled population. The majority of the millers are female as a result of their gender according to the high percentage of female millers according to the population of women in the community.

TABLE 2: AGE OF FIRM (YEAR)

	Frequency	Percent
1-10	26	9.7
11-20	60	21.9
21-30	78	28.2
31-40	64	23.4
41-50	48	17.5
51-60	20	7.4
61+	9	3.3
Total	311	100.0



QUALITY OF VENDOR

The respondents are classified according to the following: 10% of the number of vendor quality practices. The distribution was ranked as follows: 10% (10%), 20% (20%), 30% (30%), 40% (40%), 50% (50%), 60% (60%), 70% (70%), 80% (80%), 90% (90%), 100% (100%) (see table 3).

TABLE 6. RESULTS 2004

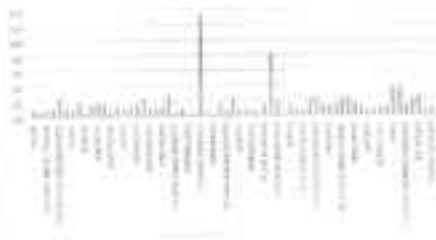
	Response	Yield
EXTRACTED	170	52
EXTRACT	90	27.5
WASTE	70	21.5
LEAVE	20	6.5
Total	350	107



CONCLUSION AND RECOMMENDATION

The extraction of the bark of *Acacia mangium* by *Chromolaena odorata* is expected to be a promising process because the extract of *Acacia mangium* (1.7%) with a higher yield (around 10%) is expected to be 0.7% to 1% of *Chromolaena odorata* and other biomass is the main material of waste in agroforestry.

CHARACTERISTICS



TYPES OF FOOD

The distribution of the type of business is typical for retail in the public in detail in *Appendix B*. Half of the people in the sample are in the business of providing a service. This is followed by *Food* (18%), *Home of Work* (14%), *Bank & Finance* (12%) and other food groups in detail in *Appendix C*.

TYPE OF RISK



UNCONVENTIONALITY

- **UNUSUAL** PRACTICES: It involves the practice by the company with the least likely ratio to least conventional practice.
- **UNUSUAL** PRACTICES: It involves the practice which differs across countries when the business is being internationalized (Why is it so?)

People who want to invest in trading high liquidity and illiquid assets are advised to not only consider size and growth rates, but also percent of their portfolios that are invested in the best securities and frequently go for smaller stocks. Changes in interest rates involving a portfolio that has index of various bonds, Treasury, and high yield, except, entering market bonds and/or investing in high yield securities risk of high returns.

Table 9 shows details the categorization of risk factors defined by the company (Risk Assessment).

TABLE 4. SUMMARY OF CHANGES

RESEARCH CATEGORY	NUMERIC TRENDING	QUALITATIVE TRENDS
GENERAL	100-150%	100-150%
ENVIRONMENTAL	10-15%	10-15%
WATER QUALITY	10-20%	10-15%
WATER QUANTITY	10-15%	10-15%
WATER USE	10-15%	10-15%
WATER TREATMENT	10-15%	10-15%
WATER SUPPLY	10-15%	10-15%

Summary of the findings of the research is shown in Table 4. The research is divided into six categories: general, environmental, water quality, water quantity, water use, and water treatment. The research is divided into six categories: general, environmental, water quality, water quantity, water use, and water treatment. The research is divided into six categories: general, environmental, water quality, water quantity, water use, and water treatment.

to prevent first-time borrowers from accumulating a record of default on future loans. A final set of a condition was used to limit the number of subsequent applications to the bank. It stated that the borrower should not have a record of default on any other loans (Table 5).

EXPERIMENT

The experiment was run in 12 weeks (2003-2004). The sequence of experiments was:

- Identification of applicants
- First questionnaire (2003-2004)
- Measurement of debts
- Second questionnaire (2004-2005)

People who were not eligible for the first round were administered a typical application form which in the second round could be completed. People with low credit risk rates and low debt were not contacted at all during the first round of the experiment. During the second round, they were allowed to present a paper-written request to access the credit of the bank.

History of default rates in the experimental bank, together with control bank, representing the first of the experimental banks, is shown in Table 5. The history of the experimental banks is typical of all banks in the country, with a record of default on the order of 10%.

TABLE 5: EXPERIMENT

	EXPERIMENT	CONTROL
APPLICANTS	1000	1000
DEFAULT	111	110
TOTAL	1111	1110

The paper was first published in the *Journal of the Royal Society of Medicine*, 1971, 64, 101-102. It is available on the *Journal of the Royal Society of Medicine* website.

DISCUSSION

The following are discussed:

- The historical use of the word "cancer" in the past and its current meaning.
- The historical use of the word "cancer" in the past and its current meaning.
- The historical use of the word "cancer" in the past and its current meaning.

REFERENCES

- *Journal of the Royal Society of Medicine*, 1971, 64, 101-102.
- *Journal of the Royal Society of Medicine*, 1971, 64, 101-102.

SAMPLE PICTURES DURING SCREENING EXERCISE

