

3	Agbakope, Sokpoe, Tefle and Vume	Basic school, secondary school, electricity, public toilet, telephone, internet service, potable water, tarred road, agric extension service, guesthouse, filling station, restaurant.	15
---	----------------------------------	--	----

Source: DPCU Construct, 2025

### 2.3.15.4 Land uses

The major land uses in the District are agriculture (food and cash crops), settlements, infrastructure networks, utility installations, Mangrove and Savanna lands and open maters. The urban centers have land uses like commerce, industry, recreation and public amenities. The rural settlements have a few public structures, which are basically schools and health centers.

### 2.3.15.5 Access to Land

Families own lands in the District and ownership rights are vested in family heads who hold it in thrust for other family members. Land can therefore be accessed by negotiating with these Land Lords for the required parcels normally through a lease arrangement. The arrangements include various forms of leases ranging from one year to 99 years. For the non-agricultural uses, the main form of access is through leasing.

It is also important to add that access to and control over land in the District is largely dominated by men. This is so because in the District land ownership rights are vested in Family Heads largely men who hold it in thrust for other family members. Therefore, this suggest that men have more control and for that matter access to lands than women in the District.

### 2.3.15.6 Threats/gaps in Land uses

- ✓ Difficulty in zoning due to family ownership of land as each family prefer the highest and best use of the parcels
- ✓ Access to land for communal use is difficult
- ✓ Difficulties in implementing local development plans as a result of poor cooperation of residents
- ✓ Land litigation issues among family heads making lease of land process difficult
- ✓ Rampant Chieftaincy issues making land administration cumbersome in the District.

### 2.3.15.7 Climate Change

The South Tongu District faces significant climate change impacts that hinder its development. Key issues include increased flooding, droughts, and erosion, particularly affecting agriculture and livelihoods. These climate-related Threats disrupt farming, impact food security, and can lead to migration from the area. These climate changes are variously affecting the economic activities in the District such as agriculture, water resources, livelihoods, infrastructure and Health. For instance, climate change, including erratic rainfall and increased temperatures, negatively affects crop yields and livestock production, which are major livelihoods in District. Also, the District, particularly vulnerable due to its proximity to the Volta River, experiences water pollution and is susceptible to flooding and droughts, affecting water availability for both domestic and agricultural use. Another aspect of climate change related issue is disruptions to agriculture and fishing lead to job losses, increased poverty, and potential migration from the affected areas. Infrastructure of the District is equally not spared climate change due to extreme weather events like flooding which damage infrastructure, including roads and buildings, further hindering development and access to resources. Last but not the least is the health consequence of

climate change in the District such as changes in rainfall patterns and increased temperatures create breeding grounds for disease vectors, potentially leading to health Threats.

### **2.3.15.7.1 Climate Change Related Vulnerability Issues**

The South Tongu District faces significant climate change vulnerability, particularly impacting livelihoods, agriculture, and water resources. Key vulnerabilities include increased flooding, drought, and erratic rainfall patterns, which negatively affect crop yields and exacerbate existing social inequalities.

The incidence of climate change as described above has the following potential impacts on the socio-economic development of the District:

- Harvest failures
- Low incomes for farmers especially women leading to poverty
- Loss of mangrove resources
- Loss of non-timber forest resources
- Loss of animal species eg. Sitatunga
- Food insecurity

### **2.3.15.7.2 Specific Climate Change Vulnerability Issues:**

*Agriculture:* Erratic rainfall, prolonged droughts, and increased temperatures threaten crop production, leading to reduced yields and food insecurity.

*Livelihoods:* Many households in South Tongu rely on climate-sensitive livelihoods like agriculture, making them highly vulnerable to climate change impacts.

*Water Resources:* Changes in rainfall patterns and increased evaporation rates can strain water resources, affecting access to potable water and sanitation.

*Flooding:* The District's low-lying areas and proximity to the Volta River make it susceptible to frequent and intense flooding, causing displacement, property damage, and loss of crops.

*Coastal Vulnerability:* Coastal communities are vulnerable to sea-level rise and saline intrusion, affecting agriculture and fishing activities.

*Social Factors:* High illiteracy rates, limited access to credit and information, and dependence on climate-sensitive livelihoods exacerbate the District's vulnerability.

The phenomenon of Climate Change Vulnerability Issues as described above have devastating impact on the District economy including the following:

*Reduced Crop Yields:* Changes in rainfall patterns and increased temperatures lead to lower crop yields, affecting food security and household incomes.

*Loss of Livestock:* Droughts and water scarcity can lead to livestock deaths, affecting livelihoods and food security.

*Displacement and Migration:* Flooding and other climate-related events can displace populations, leading to increased migration and social disruption.

*Economic Losses:* Damage to infrastructure, crops, and property due to climate-related events results in significant economic losses.

*Increased Poverty:* Climate change impacts can exacerbate poverty levels, particularly among vulnerable populations.

### **2.3.15.8 Infrastructure and Asset Maintenance**

The South Tongu District in Ghana has a mix of infrastructure, with some areas lacking adequate resources while others have access to basic services like water and education. The District Assembly is actively working to improve infrastructure across various sectors, including education, health, and sanitation.

#### **2.3.15.8.1 Distribution of Infrastructure and Services**

The facilities providing services to the population are located within space. The following presents the spatial distribution of facilities in the various settlements within the District.

#### **2.3.15.9 Health**

The distribution of health personnel and facilities is skewed towards Sogakope the District capital to the disadvantage of the other communities. Sogakope has two District Hospital offering tertiary services and serve as major referral Centers for the other Health Centers and CHPS Compounds, which are located at vantage point serving the rural population with primary health care.

#### **2.3.15.10 Education**

The educational institutions are fairly distributed among the urban and rural areas especially the public basic schools and the senior high schools. The District has 136 educational institutions, including kindergartens, primary schools, and junior secondary schools, along with a private vocational/technical institute.

#### **2.3.15.11 Trade, Commerce and Industry**

The major activities with respect to commerce, trade and industry include trading services, agriculture, small-scale processing and manufacturing. Trading is mainly concentrated in general goods, provisions and textiles. There is an increasing number of hawkers on the streets (Sogakope-Accra road and Adidome-road), erection of kiosk and numerous “table top” activities. Sogakope and Dabala Township are the main commercial centers of the District. These activities call for a review of the District’s Waste management programmes. The two main Markets which witnesses people commuting from far and near such as Accra on periodic market days, which occurs twice respectively in a week for various forms of trading activities. Commodities traded in are principally foodstuffs, Fish and general goods including manufactured goods.

The economic activities conducted in urban settings are scattered throughout the towns and do not conform to any proper land use. This practice has serious environmental implications in terms of pollution and beauty of the Sogakope Township and other major settlements. This trend therefore has to be reversed through effective zoning and planning to avoid slum development.

#### **2.3.15.12 Transportation Network**

Physical access to services such as health, education, postal and telecommunication, agriculture extension, banking, police and marketing Centres are mainly by road. The ECOWAS highway from Aflao passes through the District to Tema. Untarred feeder roads link settlements in the Agave-Afedume and Larve Area Councils. However, some communities like Adutor, Avuto, Agbogbla and their surrounding communities are linked to Dabala by a tarred feeder road of 19km. Another tarred road of about 45km connects Dabala Junction in the District to Anloga in the Anloga District. Most feeder roads become un-motorable during the rainy seasons which hinder easy movement of goods and services, slow down economic activity and reduce people’s income. Lake transport though important in the District, has not received much attention and therefore poorly developed. Local canoes are mostly used to transport

goods and people across the rivers and lagoons. Wind and rainstorms sometimes render water transport dangerous.

**2.3.15.13 Financial Sector**

The financial sector in South Tongu District is relatively small, with a focus on micro, small, and medium enterprises (MSMEs). While there are commercial banks like GCB Bank and Agricultural Development Bank, as well as the Agave Rural Bank, the District also relies on non-bank financial institutions like micro savings and loans companies to serve its diverse economic activities.

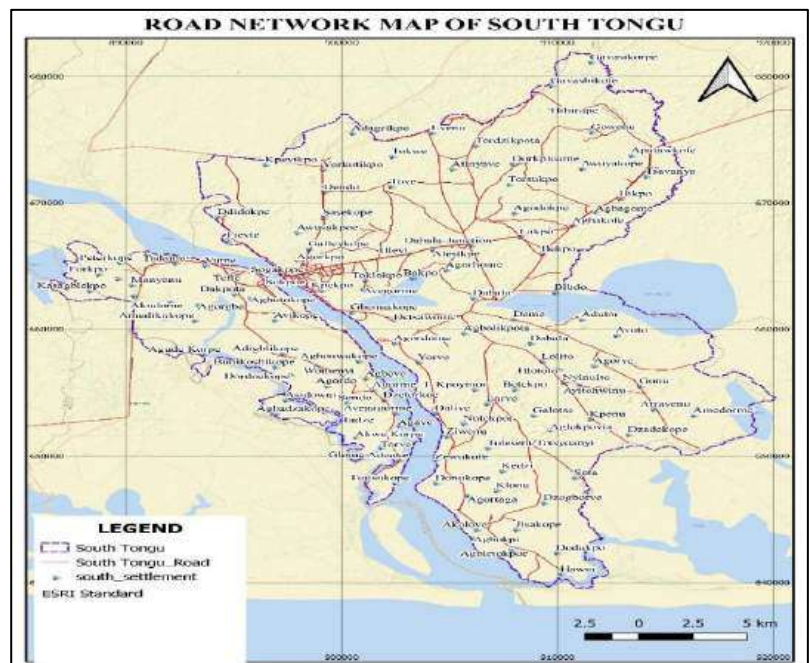
**2.3.15.14 Communication and Energy Sectors**

The communication sector in the South Tongu District, like many developing areas, is primarily focused on mobile telecommunications services. Four main providers, MTN, Vodafone, AirtelTigo, and Glo, offer mobile services. Additionally, there are fixed network operators like MTN, Vodafone, and AirtelTigo. The District also demonstrates a growing awareness and adoption of ICT tools, particularly in education, with schools utilizing digital resources and online platforms.

In terms of energy, the District is connected to the national electricity grid, covering about 90% of the entire District with ongoing efforts to extend power to remaining communities. The District faces Threats with power outages, impacting local businesses.

**2.3.15.15 Road Network Distribution in the District.**

The District has a road network of approximately 250km. This includes both first and second-class roads connecting major communities within the District and to larger urban centers like Accra, Aflao, HO and Anloga. A significant portion of the District's road network is comprised of feeder roads, particularly in areas like Agave-Afedume and Larve, which are crucial for connecting farming areas to market centers. While some roads are paved, others, especially feeder roads, are unpaved and suffer from poor conditions during the rainy season, hindering transportation. Figure 2.38: Map for Road Distribution



**2.3.15.16 Asset Maintenance**

Asset maintenance in the District is a key responsibility of the Assembly. The District over the years have built educational, health, office accommodation and residential facilities. Also, vehicles for official operations over the years have been repaired to aid the smooth operations of the assembly. Due to lack of preventive maintenance, most of these facilities are deteriorated and needs to be renovated. This puts a lot of pressure on the Assembly's operation and maintenance budget. For instance, the Assembly in 2024 had a budget estimate of GH¢1,312,132.99 for repair and maintenance of existing infrastructure

as illustrated in the table 2.30. Total actual budget expenditure as at the end of the year amounted to GH₵836,376.53, which is 36.26% short of the target for 2024. Notwithstanding the shortfalls in the releases and expenditure on repair and maintenance of existing infrastructure, the Assembly performance has significantly contributed to the achievement of the set target, objective and the overall goal of the Assembly.

Hence, pragmatic measure must be taken to ensure that facilities constructed by the Assembly are utilized well and maintained by the user agencies.

Table 2.30 Repair and Maintenance of Existing Infrastructure

<b>Asset/ infrastructure</b>	<b>Location</b>	<b>Type of maintenanc e</b>	<b>Estimated Cost</b>	<b>Actual Release</b>	<b>Gap</b>	<b>Expendit ure</b>	<b>Recommendatio n</b>
Minor Renovation Of DCE's and DCD's Office in the South Tongu District Assembly	Sogakope	Office building	48,154.59	48,154.59	0.00	48,154.59	Regular update of Repair and Maintenance Plan. Adequate and timely release of funds.
Rewiring and installation of 6no. ceiling fans at the works department block of the District assembly	Sogakope	Electrical installation	43,475.00	43,475.00	0.00	43,475.00	Regular update of Repair and Maintenance Plan.
Minor Repair Works On Bungalow No.A1 (District Magistrate Judge's Residence) At Sogakope	Sogakope	Renovation on Residential building	21,520.00	21,520.00	21,520.00	0.00	Adequate and timely release of funds.
Renovation Work At Kpotame Health Center	Kpotame	Repairs on health center	84,315.00	75,883.50	45,883.50	30,000.00	Regular update of Repair and Maintenance Plan.
Minor Repair Works On DWD Bungalow No. 2(District Planning Officer's Residence) At Sogakope	Sogakope	Renovation on Residential building	22,350.00	22,350.00	22,350.00	0.00	Adequate and timely release of funds.
Renovation of Bungalow No.B5	Sogakope	Renovation on Residential building	8,100.00	8,100.00	8,100.00	0.00	Regular update of Repair and Maintenance Plan.

Rehabilitate District Chief Executive's Residence	Sogakope	Renovation on Residential building	196,135.80	111,421.90	111,421.90	0.00	Adequate and timely release of funds.
Renovation of 4No. Area Council Offices (Sogakop, Dabala, Agave Asidowui and Larve)	Sogakop, Dabala, Agave Asidowui and Larve)	Renovation of office building	89,765.00	89,765.00	0.00	80,788.50	Regular update of Repair and Maintenance Plan.
Renovation of electoral commission and information service department offices	Sogakope	Renovation of office building	83,067.60	48,370.44	0.00	48,370.44	Adequate and timely release of funds.
Reshapping, Spot Improvement and Construction of 2/1200MM Diameter Concrete Pipe Culverts with Approach Filling.	Sogakope	Rood maintenance	215,250.00	125,000.00	90,250.00	125,000.00	Regular update of Repair and Maintenance Plan. Adequate and timely release of funds.
Reshaping and spot improvement of feeder roads	Sogakope, Agorkpo, Dabala, Hlortorto, Sokpoe etc.	Rood maintenance	500,000.00	500,000.00	0.00	460,588.00	Regular update of Repair and Maintenance Plan. Adequate and timely release of funds.
<b>Total</b>			1,312,132.99	1,094,040.43	299,525.40	836,376.53	

### 2.3.16 Governance

The District Assembly is organized in accordance with the dictates of the Legislative Instrument (L.I 1961) and the Local Governance Act, 2016 (Act, 936). The General Assembly is the Highest Decision Making Body of the District and is made up 40 Elected Members representing Electoral Areas and 18 Government Appointees in addition to the District Chief Executive and the Member of Parliament for the South Tongu Constituency but without Voting Rights. The General Assembly has a total of Eight Female Members; three of the Members are elected and five appointed.

The Assembly works through its two main Committees; Executive Committee and Public Relations and Complains Committee. The District Chief Executive and the Presiding Member respectively head these Committees. The Executive Committee has Five Statutory Sub-committees including Development Planning, Social Services, Works, Justice and Security and Finance and Administration. The various Sub-Committees submit their recommendations to the Executive Committee for consideration. These recommendations are further submitted to the General House for approval or ratification. The various Departments headed by the District Co-ordinating Director who is also the Secretary to the Assembly, then implement decisions taken at the General House. The Assembly meets at least three times a year.

In the absence of the Assembly, the Executive Committee has the mandate to take decisions on behalf of the Assembly.

To ensure good governance, the General Assembly headed by the Presiding Member, oversees the activities of the Executive Committee headed by the District Chief Executive. The Presiding Member is provided with an office in the main Administration Block to enable him/her perform his/her duties effectively.

The Administrative wing of the Assembly is responsible for implementing policies and decisions of the Assembly and the Central Government. The District Co-ordinating Director, heads the office of the District Administration. The Coordinating Directorate consists of twelve established Departments namely: Central Administration, Physical Planning, Human Resource, Statics, Works, Social Welfare and Community Development, Education, Youth and Sports, Agriculture, Trade and Industry, Forestry, Wildlife and Conservation, Health and Disaster Prevention. One other important Department yet to be established is Transport. The Central Administration, which provides secretarial and managerial services to the General Assembly and the other Departments, has the full complement of all Heads of Units. The Units are Finance, Budgeting, Planning, Environmental Health, Sanitation, and Procurement.

All the key officers are well accommodated and have their respective offices. However, there is the need to resource some of the officers with equipment such as computers for effective discharge of their duties. One major problem facing the Decentralized Departments is lack of means of transport to enable them undertake field visit. This has the tendency to hinder the effective implementation of planned activities and execute the monitoring and evaluation of it. The logistical challenge therefore needs to be addressed through adequate budgetary provisions to acquire sufficient logistics.

#### **2.3.16.1 Traditional Administration and Culture**

The District has five traditional areas namely Agave, Fievie, Tefle, Sokpoe and Vume of which Agave is considered the largest. Each traditional area is autonomous with its own paramount chief, queen and festival. The people of Agave celebrate an annual Dzawuwuza festival during the month of August. Two months prior to the festival, picking of fresh clams/oysters (adodi) is forbidden. Tortsogbeza by the people of Sokpoe is a biennial event held during Easter in remembrance of the historical crossing of the Volta River by their ancestors. Kporleza, literally meaning (arresting the tiger) is usually celebrated in December by the people of Fievie while Afenorto, which means 'home coming', is celebrated by the people of Tefle during the month of December. The festivals bring home all indigenes residing outside their localities to connect with their extended families, promote unity and mobilize resources toward self-help development projects. Ewes dominate the ethnic groups in the District (96.1%), followed by the Ga-Dangme (1.7%) and Akans (1.1%) with an insignificant presence of other ethnic groups (1.1%). Christians form majority (75.7%) of the population, followed by Traditionalist (12.0%) and Muslims (2.0%). Those who do not profess any religion form 9.4 percent and those who practice other religions constitute 0.9 percent. There is peaceful co-existence among the religious groups in the District.

#### **2.3.16.2 Peace and security**

The Security situation in the District is generally peaceful; however, there exists pockets of conflicts with respect to Chieftaincies in areas of Fievie and Agave. There are also pockets of potential land disputes, which require urgent management before they escalate.

The security in the District is managed by the District Security Council (DISEC) of the Assembly comprising the District Chief Executive as its Chairperson and Security Personnel from the Ghana Police Service- Sogakope Divisional Command, District Command, the National Investigation Bureau (NIB),

Immigration Service, Fire Services, Army Command and Customs. These Security Services are well established in the District and readily render their services when needed. In addition to above. The traditional set-up also helps to maintain law and order in the District. They serve as the first point of call to residents on domestic disputes and offer alternative conflict resolution services to people who request for these services. They are also often being major contact persons for security issues involving land.

### **2.3.16.2.1 Threats**

- Inadequate Office Accommodation for the police, Fire service and Immigration Service
- Inadequate residential Accommodation for all security personnel
- Limited logistics for security operatives

### **2.3.16.3 Social Accountability**

The Assembly use Social Accountability as a tool to enhance popular participation in the Governance process of the District. It provides an opportunity for Assembly to account to the residents regarding its operations and to solicit the concerns of the residents to shape its decisions. Quarterly, Social Accountability forums such as Town Hall Meetings, Social Public Expenditure and Financial Accountability (SPEFA) Meetings, Stakeholder Consultation of Fee Fixing Resolutions etc. are usually attended by Chief, Queen Mothers, Assembly Members, Civil Society Organizations, and Opinion Leaders. Assembly Members and unit Committee Members are agents for community mobilization for development in their respective areas. Mass media such as radios, newsletters as well as letters also serve as means to mobilize people and to disseminate information to the public.

### **2.3.16.4 Monitoring and Evaluation Systems**

The fact that the Assembly's resources are limited/scarce while its needs are unlimited, the Assembly has monitoring and evaluation systems put in place to ensure value for money in the execution of any development programme in the District.

The National Monitoring and Evaluation System as directed by the National Development Planning Commission of Ghana guide the Assembly's Monitoring and Evaluation system. As such a Quarterly and Annual Monitoring and Evaluation System has been put in place by Assembly to generate and collate data to track the progress of the implementation of various activities being implemented in the year and to also assess the impact of completed projects/programs on the lives of their beneficiaries.

The Assembly has two (2) levels of monitoring; the first is the sector specific by Sector Departments of their programmes and projects. Joint monitoring by two or more Departments is encouraged in situations where an intervention is crosscutting in nature. The second level of monitoring is undertaken by the DPCU on the overall District development programmes, projects and activities.

The Quarterly Monitoring exercise is preceded by DPCU meeting to discuss and agree on the focus, tools and expected outcomes of the M&E and to develop an M&E Work Plan and Budget. A working team of the key stakeholders composes the following:

1. District Development Planning Officer
2. District Budget Analyst
3. District Engineer
4. District Director of Ghana Health Services
5. District Director of Education
6. Rep. of Civil Society Organization

## 7. District Environmental Health Officer

These key stakeholders visit project sites and collect relevant data in order to measure progress of project implementations against their planned targets. A debriefing of the District Chief Executive follows the monitoring visit on the outcome of the exercise. A report is then prepared and submitted to the National Development Planning Commission through the Regional Coordinating Council. Copies of these reports are also disseminated to other stakeholders to inform them about issues identified.

In addition to the Quarterly Monitoring, Annual Monitoring Exercises are also conducted each year to assess the year's performance and its contribution towards the attainment of the District Medium Term Development Goal.

The basic tool for the field visits are monitoring checklist developed based on the agreed indicators. The DPCU lack the skills in using scientific methods and data analysis software such as Micro-Soft Excel, Infographics etc. to analyze and interpret both primary and secondary data collected from the field and other relevant data sources. As such, a rather slow manual means is employed to analyze the data. This however does not compromise the quality of the data analyzed.

The Assembly also conducts Evaluation of programs with the aimed of assessing the impact of its development Interventions on their targeted beneficiaries. Two forms of evaluations are conducted. These include the conventional Evaluation and Participatory evaluation using Community Score Card as a tool.

### 2.3.16.5 Emergency Preparedness and Response –

Emergency preparedness and response in the District primarily focuses on mitigating the impact of floods, particularly those resulting from the spillage of the Akosombo and Kpong Dams. The District Assembly, in collaboration with organizations like NADMO and VRA, are working to improve early warning systems, enhance community awareness, and provide support to affected populations.

### 2.3.17 Disaster Profile and Flood Context Analysis

#### 2.3.17.1 Disaster Incidents profile.

The District is highly exposed to risks of multiple weather, climate and other human related threats. The mounting vulnerability is visibly a symptom of environmental degradation, climate change, poverty, and poor land use. Over the years, floods have become frequent in the District affecting many communities. The periodic spillage (e.g 2023) of the Akosombo Dam is a compounding factor. Other environmental risks epidemics/disease outbreaks, pest infestations, and fires are also common across the District.

Table 2.31: Hazard Profile

District	Hazard	Season of Occurrence	Hotspots/Vulnerable Areas for floods
South Tongu	<ul style="list-style-type: none"> <li>• Flooding (Flash/Riverine)</li> <li>• Flooding (Dam Spillage)</li> <li>• Rainstorm</li> <li>• Bush fires</li> </ul>	<ul style="list-style-type: none"> <li>• April-July/Sept-Oct</li> <li>• April-July/Sept-t - November</li> <li>• April-July/Sept-Oct</li> <li>• Oct-March</li> <li>• All year round</li> </ul>	Sogakope North/South Xikpo, Agbagome, Tsavanya, Adutor, Agbobla, Agbakope, Sunukpo, Tefle, Sokpoe, Vume etc

	<ul style="list-style-type: none"> <li>• Fires (Domestic, industrial, commercial, market fires, vehicular fires)</li> <li>• Road Accidents</li> <li>• Malaria, HIV/AIDS, Typhoid, TB, HINI, Bilhazia</li> </ul>	<ul style="list-style-type: none"> <li>• All year round</li> <li>• All year round</li> </ul>	
--	---	--	--

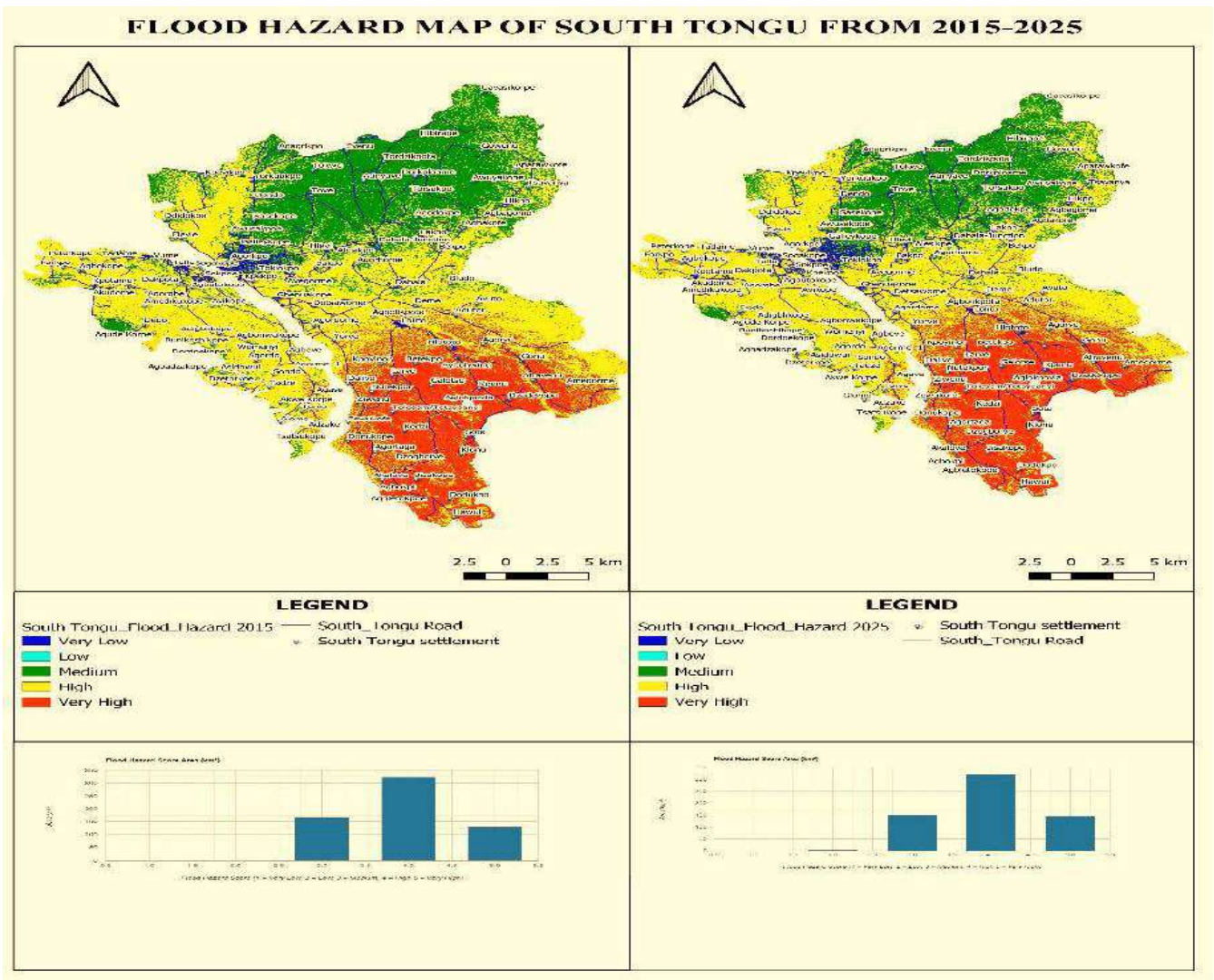
Hydro-meteorological disasters (e.g., Floods, windstorms, etc.) occur and cause human, social and economic losses throughout the South Tongu District. Flood occurrence has become an annual phenomenon affecting many communities during the major rainy season.

Flood-prone areas as shown in the figure 2.33 are mostly located in Sogakope North/South Xikpo, Agbagome, Tsavanya, Adutor, Agbobla, Agbakope, Sunukpo, Tefle, Sokpoe, Vume etc

The major causes of flooding in the District are heavy rainfall resulting in riverine flooding, flash floods and Dam spillages.

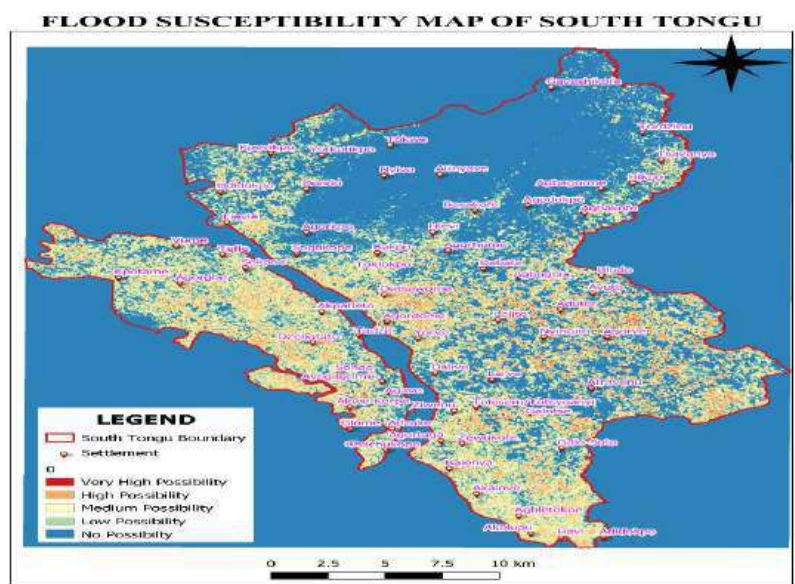
The impact of flooding includes deaths, injuries, missing persons, displacements, loss of shelter, disease outbreaks, environmental pollution and degradation, disruption in social services, infrastructural loss, loss of livelihoods particularly farming activities, trauma etc.

The increasing frequency of floods has revealed a wide range of weaknesses in the disaster preparedness and emergency response system in the South Tongu District and exposed vulnerable populations living in unplanned settlements and areas along the river basins. Other vulnerable factors include livelihood activities and income levels, type of housing, availability of social amenities/infrastructure, literacy level, cultural beliefs and practices. The flood hazard maps of South Tongu from 2015-2025 as shown above further explain the increasing frequency of floods in the District. Comparing the two maps for the ten-year period, there has been slightly increase in flood hazards in the District revealing wide range of weaknesses in the disaster preparedness and emergency response system in the District. Therefore, the Assembly in collaboration with its partners requires enhanced joint efforts to reduce disaster risks through preparedness activities in order to build community resilience, increase sustainable development and growth, and improve adaptation to climate change. Figure 2.39: Flood Hazard Map of South Tongu District.



### 2.3.17.2 Disaster risk management

Disaster risk management in South Tongu District focuses on reducing the potential impact of various hazards, including floods, droughts, and storms, through a combination of prevention, mitigation, preparedness, response, and recovery strategies. The District aims to build resilience among its communities and minimize loss of life, property, and livelihood during and after disasters. The Department of NADMO is responsible for the coordination of disaster management



activities in the District in collaboration with the DDMC. In the event of a major flood, NADMO assess the situation and advise the Chief Executive to call for an emergency DDMC meeting and activate the response phase of the Flood Contingency Plan (FCP).

Given the District location along the Volta River, the District is particularly vulnerable to flooding. The District assembly, along with other stakeholders, likely focuses heavily on flood risk management, including early warning systems, embankment construction, and community-based flood preparedness programs. Figure 2.40: Flood susceptibility map of South Tongu District

### 2.3.17.3 Disaster Preparedness and Response.

The preparedness and response actions in the District include community education on water safety, strengthening early warning systems, improving water management practices, and enhancing public-private partnerships. The District Assembly is also actively involved in development planning, resource mobilization and disaster risk reduction initiatives. Prior to a flooding event, the District Disaster Management Committee guide and facilitate the implementation of preparedness and mitigation activities to reduce the impact of flooding on vulnerable communities. Also, the DDMC guide and facilitate the implementation of response actions during flood emergencies to mitigate the impact on vulnerable communities. The District Emergency Operations Centre (DEOC) with representation from the relevant response agencies coordinate all response activities, with support from the Regional and National Emergency Operations Centres (NEOC) where necessary.

**Table 2.32: Preparedness actions for focus areas**

Focus	Trigger/signs	Activities/ Mitigation Measures	Lead	Collaborators
	Forecast of above-average rainfall and thunderstorm	Timely release/dissemination of weather information	GMet/NADM O	ISD/Assembly members/NCCE, DDMCs/Media, CIC, Traditional Authorities, Disability Organization GFDO, Unit Committee etc
	Notification of rising river water levels	Timely release/dissemination of data on rising water levels	GHA/NADM O/VRA	ISD/Assembly members/NCCE, Boat Operators, Fisher folks, Media CIC, etc
	Notification of spillage	Periodic updates and timely notification /dissemination of spillage levels	VRA/NADMO	ISD/Assembly members (PD)/NCCE/CIC, Media, Traditional authorities, Unit Committee Members etc

Dredging/Desilting and opening of drains /waterway	<p>a. Choked waterways</p> <p>b. Construction along waterways</p> <p>c. Absence of drains</p> <p>d. Settlement in low-lying areas</p> <p>e. Narrow/choked Drains</p>	<p>Dredging/clearing of drains/enforcement of by-laws on sanitation</p> <p>Demolition/clearing of structures</p> <p>Construction of drains</p> <p>Evacuation to higher grounds</p> <p>Demolition/clearing of structures</p> <p>Dredging and opening up of drain</p> <p>Clearing of debris, weeds, waste, etc.</p> <p>Zoning &amp; permitting</p> <p>Clean up Campaigns</p>	DA (DCE/DCD)	NADMO, Assembly Members, Traditional Authorities, Private Companies, DDMC, EHSU, Works, PPD, Waste Management Company, GPS, Department, VRA GNFS, GAF etc.
Public Education and Sensitization	<p>Weather forecasts and updates on Spillage</p> <p>Notification of rising river, water levels</p> <p>Flood mitigation and safety messages</p>	<p>Constitute a sub-committee on communication</p> <p>Disseminate information to DDMC and other stakeholders</p> <p>Review communication Plans</p> <p>Community engagement (face-to-face, WhatsApp, and other social media platforms, Radio, CIC, Print &amp; Electronic, etc.)</p>	DDMC  NADMO/ISD  ISD/NCCE	<p>Assembly members/NCCE / Ghana Federation of Disability Organizations ( GFDO), VRA, Private Sector, CIC, Media, etc</p> <p>NCCE, VRA, Local NGOs, GFD, CIC, Traditional Authority, Private sector</p> <p>DDMC</p> <p>NADMO, GHS, DDA, GES, DSWCD, VRA, Assembly members, EHSU, Traditional and Religious bodies, etc.</p>
Risk assessment	<p>Forecast of above-average rainfall and Thunderstorm</p> <p>Notification of rising river water levels</p> <p>Notification of spillage</p>	<p>Develop/review instruments for flood risk assessment</p> <p>Conduct site visits to flood-prone areas to:</p> <ol style="list-style-type: none"> <li>1. Assess the state of drains</li> <li>2. Assess elements at risk (population, houses, critical infrastructure, farmlands, List of PWD etc.)</li> </ol>	NADMO	VRA/DP/DDA/GHS/GES/DSWCD /Works,PPD, Private Sector/Community leaders, EHSU etc
Resource and Logistics Register	<p>Forecast of above-average rainfall</p> <p>Notification of rising river water levels</p> <p>Notification of spillage</p>	<p>Constitute a resource mobilization sub-committee</p> <p>Compile and Update Asset Register</p> <p>Compile a list of the emergency response team</p> <p>Pre-check- contacts of emergency roster personnel to confirm the potential for availability</p>	DDMC (DCE/DCD)  Resource mobilization sub-committee	NADMO, VRA, Budget Unit, DP, GAF, GFS/WD/GHS/GPS, ISD, NAS, DWSCD, Traditional Authority, EHSU, Religious Bodies, & Private Sector
Safe Havens and	Forecast of above-average	Assess the state of existing safe havens and the evacuation routes		PPD, WD , GES, GHS, EHSD,GWCL, ISD, ECG, GAF,

Evacuation Routes	<p>rainfall</p> <p>Notification of rising river water levels</p> <p>Notification of spillage</p>	<p>Identify new safe havens and their evacuation routes (where necessary)</p> <p>Pre-position logistics (WASH facilities, NFIs, etc.)</p> <p>Set up shelter/camp management teams</p>	NADMO/DD MC	VRA, GNFS, GPS, DSWCD, Traditional authorities/Private sector/Local NGOs, Religious Bodies Ghana Federation of the Disabled, NCCE etc
Relief mobilization and Administration	<p>Forecast of above-average rainfall</p> <p>Notification of rising river water levels</p> <p>Notification of spillage</p>	<p>Constitute a relief mobilization and administration committee</p> <p>Compile a list of possible relief needs</p> <p>Procure essential relief items</p> <p>Preposition essential relief items</p> <p>Re-confirm emergency stock levels that are pre-positioned in the District</p>	<p>DA(DCE/DCD)</p> <p>NADMO/DD MC</p>	Private sector/Local NGOs, Religious Bodies, DDA, VRA, Commercial Farmers, Media etc
Training and simulation exercises	<p>Development/review of contingency plan and SOPs</p> <p>Weak capacity for response</p> <p>Weak understanding and implementation of roles</p>	<p>Conduct joint training on the contingency plan</p> <p>Simulate the contingency plan and SOPs</p>	DA (DCE/DCD)/ NADMO	DDMCs, NAS, GAF, Local NGOs, VRA, Media, Private sector/

## 2.4 List of Summary Development Issues

Table 2.33 presents the development issues derived from analysis of performance review of development programmes/projects and situational analysis of South Tongu District.

**Table 2. 33. List of Development Issues**

<b>Development Dimensions</b>	<b>Sectors</b>	<b>Key Identified issues (as harmonized with inputs from the performance review, profiling and community needs and aspirations)</b>
<b>Economic Development</b>	Trade and revenue mobilization	<ul style="list-style-type: none"> <li>• Poor state and lack of market facilities</li> <li>• Weak capacity to mobilize adequate revenue for development</li> <li>• Leakages of the revenue being collected</li> <li>• Unwillingness of residents to honor tax obligations</li> </ul>
<b>Economic Development</b>	Tourism and MSME development	<ul style="list-style-type: none"> <li>• High cost of credit</li> <li>• Difficulty in accessing credit facilities by businesses</li> <li>• High level of illiteracy among the operative in MSME leading to poor adoption of improved technology</li> <li>• Poor road network to Tourist Sites</li> <li>• Untapped tourism Strengths</li> <li>• Low savings and capital for expansion of businesses in the sector</li> </ul>
<b>Economic Development</b>	Agriculture development	<ul style="list-style-type: none"> <li>• Declining soil fertility</li> <li>• Inadequate market for farm produce</li> <li>• High post-harvest losses</li> <li>• Limited storage facilities</li> <li>• Limited access to farm inputs and implements</li> <li>• Difficulty in accessing land for farming</li> <li>• Inadequate irrigation facilities</li> <li>• Poor condition of access roads/no access roads to farms</li> <li>• Limited number of extension officers</li> <li>• Limited technology in farming</li> <li>• Limited access to veterinary services</li> <li>• Limited appreciation of Climate Change and Green Economy Issues</li> <li>• Tree harvesting (illegal felling of mangrove for firewood)</li> <li>• Bush fires</li> <li>• Inappropriate farming practices</li> <li>• High crop failures due to shortages in rains/floods</li> <li>• Low incomes of farmers leading to poverty</li> <li>• Destruction of farm crops by stray animals</li> </ul>
<b>Social Development</b>	Educational Sector	<ul style="list-style-type: none"> <li>• Inadequate logistics for office running (printer, A4 sheets, desktop computer, photocopier, etc.)</li> <li>• Poor condition of District Education Directorate Office building</li> <li>• Inadequate office space and store room</li> <li>• Limited financial resources to maintain office vehicles and motor bikes for monitoring exercises</li> <li>• Encroachment on school lands at all levels</li> <li>• Poor condition of classroom blocks across all levels of schools</li> <li>• Inadequate classroom blocks across all levels of schools</li> <li>• Lack of teaching and learning materials</li> <li>• Inadequate classroom furniture at all levels</li> <li>• No electricity power source to some schools</li> <li>• No potable water available in some schools</li> </ul>

		<ul style="list-style-type: none"> <li>• Inadequate trained teachers especially at rural localities (overstaff in urban areas)</li> <li>• SMC's not effective in some schools</li> </ul>
<b>Social Development</b>	Health Sector	<ul style="list-style-type: none"> <li>• Low immunization coverage of all antigens</li> <li>• Low TB case detection and index of suspicion</li> <li>• Low ANC Registrants</li> <li>• Poor health seeking behavior among populace</li> <li>• High prevalence of non-communicable diseases</li> <li>• Low coverage of Family Planning Acceptors</li> <li>• Increased Teenage Pregnancy</li> <li>• High Maternal Death rate</li> <li>• Inadequate Supportive Supervision to all health facilities</li> <li>• Low vitamin A coverage</li> <li>• Stigmatization and inadequate community support for mental health services</li> <li>• Low detection of underweight cases</li> <li>• Inadequate preventive and protective actions</li> <li>• Focusing on addressing Substance Abuse</li> </ul>
<b>Social Development</b>	Social Welfare	<ul style="list-style-type: none"> <li>• Low participation of women in local level elections</li> <li>• High unemployment among the youth especially women</li> <li>• Weak prioritization of gender issues leading to low budget allocation for gender and gender related development issues</li> <li>• Overburdened household chores on women and girls</li> <li>• Inadequate logistics for Social Welfare department to deliver their mandatory services</li> <li>• Few numbers of females completing tertiary education.</li> <li>•</li> </ul>
<b>Social Development</b>	Water and Sanitation	<ul style="list-style-type: none"> <li>• Inadequate potable water supply/water rationing</li> <li>• Broken down/uncompleted water systems in communities</li> <li>• Poor management of water systems due to absence of WATSANs</li> <li>• Inadequate sanitation facilities especially in some basic schools and secondary schools</li> <li>• Inadequate refuse collection containers</li> <li>• Poor drainage systems in the communities</li> <li>• Lack of engineered land field site for the District</li> <li>• Open defecation</li> </ul>
<b>Environment, Infrastructure and Human Settlements</b>	Roads, streetlight, electricity and drainage system	<ul style="list-style-type: none"> <li>• Poor condition of urban and feeder roads</li> <li>• Lack of proper drains along the roads at built-up areas causing rapid deterioration of roads in communities</li> <li>• Lack of access roads within the major towns and the new settlements and between settlements</li> <li>• Limited speed bumps on High Ways roads leading to over speeding and accidents</li> <li>• Inadequate and lack of maintenance of streetlights</li> <li>• Some newly developed areas and rural communities not connected to national grid</li> </ul>
<b>Environment, Infrastructure and Human Settlements</b>	Physical and spatial planning	<ul style="list-style-type: none"> <li>• Difficulty in zoning due to family ownership of land as each family prefer the highest and best use of the parcels</li> <li>• Access to land for communal use is difficult</li> <li>• Difficulties in implementing local development plans as a result of poor cooperation of residents</li> </ul>

		<ul style="list-style-type: none"> <li>• Lack of District Spatial Development Framework, Structural Plans and limited number of Local Plan making of the entire District difficult</li> <li>• Land litigation issues among family heads making lease of land process difficult</li> <li>• Rampant Chieftaincy issues making land administration cumbersome in the District.</li> </ul>
<b>Environment, Infrastructure and Human Settlements</b>	Disaster management	<ul style="list-style-type: none"> <li>• Weak response to disaster issues</li> <li>• Frequent flooding incidents</li> <li>• Lack of emergency equipment and materials to respond to disaster victims.</li> <li>• Inadequate knowledge on disasters</li> <li>• Poor early warning systems</li> <li>• Poor coordination among key institutions on disaster management and response</li> <li>• Inadequate infrastructure for emergency response</li> <li>• Weak social protection system for victims of disasters</li> </ul>
<b>Governance, Corruption and Public Accountability</b>		<ul style="list-style-type: none"> <li>• High incidence of poverty</li> <li>• Leakage of internally generated funds</li> <li>• Inadequate office space and accommodation facilities for staff of the Assembly</li> <li>• Inadequate Office Accommodation for the police, Fire service and Ambulance department</li> <li>• Rampant burglary issues in the District</li> <li>• Underperformance of District development plan and budget due to low or non-releases of statutory funds by central government to execute planned development projects.</li> <li>• Inadequate logistics such as laptops, printers, office furniture etc. for decentralized departments to function well</li> <li>• Inadequate financial, logistical and human resources</li> </ul>
<b>Implementation, Coordination, Monitoring and Evaluation</b>	Implementation, Coordination, Monitoring and Evaluation	<ul style="list-style-type: none"> <li>• Inadequate capacity for plan preparation and implementation by heads of departments</li> <li>• Delay in the release of approved funds</li> <li>• Weak collaboration in the design and implementation, M&amp;E of government programmes and projects</li> <li>• Weak linkages between CSO/NGO plans and MTDPs</li> <li>• Weak coordination of programmes and projects</li> <li>• Low demand and utilization of M&amp;E results</li> <li>• Untimely release of funds for M&amp;E activities</li> <li>• Inadequate evaluations at all levels</li> <li>• Limited M&amp;E competencies</li> <li>• Weak and fragmented M&amp;E information systems at all levels</li> <li>• Weak reporting and unreliable M&amp;E data</li> <li>• Different reporting cycles and formats by departments</li> <li>• Poor record keeping and documentation</li> <li>• Inadequate data and information storage systems</li> </ul>

## 2.4.1 Strengths, Weaknesses, Opportunities and Threats (SWOT) Analysis

This section involves an analysis of the strengths and opportunities that exist and could be utilized to address identified issues. Weaknesses and Threats that can derail development efforts were also identified and analyzed. In development planning, it is important to scan environment within which the development interventions are to be implemented. In so doing, it is important to identify the supporting factors as well as those that have the capacity to work against the expected development envisioned. The Strength and opportunities comprise all factors, which can be successfully tap for development. The Weaknesses and Threats however, comprise the otherwise. The table 2.34 below presents the SWOT analysis.

Table 2.34: SWOT analysis

STRENGTHS	WEAKNESSES	OPPORTUNITIES	THREATS
<i>What is our competitive advantage?</i>	<i>Where can we improve?</i>	<i>What new technology can we use?</i>	<i>What regulations are changing?</i>
Availability of banks and other Financial Institution willing to offer credit for business development	High cost of credit	Existence of Government policies on SMEs development will encourage more Institutions to give out credit to support the Sector	Unstable macroeconomic environment reduces the ability of Financial Institutions to give enough credit facilities
Availability of training programmes under Ghana Enterprise Agency to upgrade businesses and increase their capacity to attract credit	Weak capacity of SMEs to attract existing credit facilities	Existence of donor support for capacity building in the sector	Unstable macroeconomic environment reduces the ability of Financial Institutions to give enough credit facilities
Availability of attractive <b>ecotourism sites</b>	Poor roads infrastructure to the tourist sites	Availability of Ghana Tourism Authority with requisite skills to support the sector's growth	Lack of private sector participation in the tourism development
Availability of fertile land for agriculture purposes	Lack of Proper zoning of agricultural lands	Availability of Zoning technology, satellite and drones and experts in the field	High cost of preparing land use plans and land tenure system
Availability of rivers and streams for irrigation farming	<ul style="list-style-type: none"> <li>• High initial capital required</li> <li>• Weak capacity to build irrigation facility</li> <li>• Low income of farmers</li> </ul>	Availability of Irrigation Development Board to support dam construction	<ul style="list-style-type: none"> <li>• Low market for produce</li> <li>• High cost of farm inputs and implements</li> </ul>
High demand for improved storage facilities	Inadequate funds	Government agricultural policy (Feed for Ghana) supports this issue Availability of Buffer stock company	Low investment of private capital for storage facility and transportation systems
Existence of Ghana Enterprise Agency (GEA) with rich related programs to strengthen capacity of businesses	High cost of available technology	Existence of NGOs for supporting Agriculture value chain products	High cost of interest for accessing credit facilities for farming
Availability of water sources (surface and underground)	Inadequate funds	Availability of modern technology in potable water provision	Decreasing donor support for water supply
Youthful population	Low level of employable skills	Existence of TVET institutions	High HIV/AIDS prevalence among the youth Low interest of the youth in skill training/artisanal work

High prospects of employment opportunities in agriculture	Bad attitude of the youth towards work	High premium on youth employment by government	Untimely release of funds for youth employment programme
Availability of Youth employment program	Lack of employable skills among the youth	Availability of the National youth Employment Programme	Quick acquisition for wealth by youth through gambling and internet fraud
Availability of heavy duty equipment for road construction	Inadequate budgetary allocations to Road construction	Government has high priority for road infrastructure development eg. ECOWAS Corridor Road	Weak macroeconomic condition to support high investment in the sector
Presence of physical planning department with requisite skills to control development	Weak cooperation from the public  Limited capacity to prosecute offenders  Limited control over lands by the Assembly	National policies support enforcement of building regulations	undue delays in the court system
Abundance of water resources for Aquaculture	Limited investment in this sector	Existence of Fishery Ministry	Low investment of private capital in Aquaculture
High Electricity coverage	Intra-community extension	Existence of power infrastructure across the District	Switch to prepaid meters and it accompanied challenges
High Internet usage	Low Network speed and Low rural coverage	Existence of mobile network infrastructure	Scattered rural communities
Mobile network coverage	Low rural coverage	Existence of mobile network infrastructure	Scattered rural communities
Good urban transport services	Lack of well-regulated organized transport stations	Existence of registered transport unions and lorry parks	High cost car parts and lubricants
Electronic Financial literate population	Activities of mobile money fraudsters/scammers	Availability of mobile money vendors across the District	E-levy/robbery attacks on mobile money vendors and activities of scammers
Mangroves reserves/good vegetation	Logging, bushfires	Availability of forestry and Wildlife division	High cost fuel gas as alternative
Vibrant market Centers	Inadequate market facilities	Existence of Private investors 24-Hour Economy initiative by Government of Ghana	Frequent change of government and ideologies High risk in PPP arrangement
<b>What resources do we have?</b>	<b>What products are underperforming?</b>	<b>can we expand our operations</b>	<b>what are competitors doing?</b>
Climate condition support agriculture	Impact of climate change	providing credit facilities to the youth in agriculture for attraction	Draught and flooding of farm lands

		Introduction of drought resistant seeds	
Mangroves/good vegetation	Logging, bushfires	Intensification of tree planting exercise	High cost fuel gas as alternative
Vast water resources	Inadequate potable water supply	Existence Ghana Water Limited for extension of water supply	Low capacity equipment for water production and transmission Low collection of bills and leakages
Fertile land for agriculture	Difficulty in accessing lands for agriculture purpose due to land tenure system in the District	Establishment of commercial farms	Over reliance of agro-chemicals in farming
Tourist sites (Avu Lagoon, Sogakope Bridge, and Beach Resorts etc.)	Low investment for development tourist sites in the District	Private sector partnership Ghana Tourism Authority	Remote locations of some the tourist potentials
Vast clay deposit for ceramic, bricks and tiles industry	Lack of capital for investment this sector	Private sector partnership Donor grants	Unstable macroeconomic environment reduces the ability of Financial Institutions to give enough credit facilities
Mat weaving	Lack of capital for investment this sector	Private sector partnership Donor grants	Unstable macroeconomic environment reduces the ability of Financial Institutions to give enough credit facilities
Fresh water for Aquaculture (Tilapia, Clams Mudfish etc.)	Lack of capital for investment this sector	Private sector partnership Donor grants	Flooding  High cost of interest for accessing credit facilities for Aquaculture
Vast swampy areas for commercial rice farming	Difficulty in accessing lands for agriculture purpose due to land tenure system in the District	Private sector partnership Donor grants	Draught and flooding of farm lands
<b>What products are performing well?</b>	<b>Where are we lacking resources?</b>	<b>What new segments can we test?</b>	<b>How are consumer trends changing?</b>
Vegetables	Cold storage, Packaging and Marketing	Providing cold storage Private sector partnership Canning of some vegetables	Online marketing
Rice	Packaging and Marketing	Establishment of rice market	Online marketing
Cassava	Processing, packaging and marketing	Processing of cassava into starch and gari etc.	Demand for well packaged cassava products
Clams and Tilapia	Cold storage, Packaging and Marketing	Providing cold storage Canning of clams and Tilapia	Online marketing

### 2.4.1: Community Development needs and aspirations

The Key development issues that confront the people and are of serious concern to the communities and citizens of the District were collected through a participatory approach using the District Electoral structures of the Assembly as the basis for engagement with stakeholders and the citizenry on the plan preparation. Each Electoral area capital was served as the basis for organizing the community needs data gathering. This gave impetus to elicit views from the citizens on issues of concern to them. Key stakeholders were drawn from all communities under each electoral area to ensure holistic involvement in problem identification as well as prioritization. The outputs from these community engagements were integrated into the needs assessments and problem identification.

In addition, the key stakeholders were drawn from all the interest groups and representatives of all major demographics as well as identifiable groups. The representation at the various community engagements attracted individuals from the following;

- i. Traditional Authorities
- ii. Community Based Groups
- iii. Women’s Groups
- iv. Youth Groups (Men and Women)
- v. Residents and Landlords
- vi. Market Women’s Groups
- vii. PWD Groups
- Viii. Civil Society Organization
- ix. Other key opinion leaders

The Key development issues identified from the various community engagement were diverse issues that affects the communities that need to be addressed in the next plan. The issues identified by the citizens are summarized in the table 2.35 below.

The overall objective of development is to improve the social and economic wellbeing of people, which must reflect in the choices available to them.

Table 2.35. The summarized issues identified.

S/N	Sector	Community needs and aspirations
I	Trade and revenue mobilization	1. Provision of market infrastructure 2. Improved conditions of existing market infrastructure 3. paving of Markets floor
	Tourism	Improved access roads to Avu lagoon tourist site
	Agriculture Development	Access to market for farm produce Improved access to farm inputs and implements Improved access to farm implements and inputs Improved access to credit facilities for farming

		<p>Improved access to irrigation facilities for enhanced agriculture development</p> <p>Improved access to agro-processing machines for processing Gari</p> <p>Opening of access roads to farms</p> <p>Improved access to Agricultural extension Officers</p> <p>Provision of bridges/culverts over streams and valleys to enhance access to farms</p>
	Road infrastructure	<p>Improve the condition of road to communities</p> <p>Improved condition of existing roads within settlements</p> <p>Improved condition of existing roads linking settlements</p> <p>Provision of culverts on the streets on streams and springs to promote access</p> <p>Provision of speed rumps on main roads</p>
	Human settlement	Improved planning and zoning of new settlement areas
	Water and Sanitation	<p>Improved management of public toilets</p> <p>Provision of potable water</p> <p>Completion of uncompleted water systems</p> <p>Rehabilitation of broken water systems</p> <p>Improved sanitation services</p> <p>Provision of Institutional Toilets</p> <p>Scale up the implementation of CLTS</p> <p>Arrest of stray animals</p> <p>Provision of Refuse collection containers</p> <p>Improved management of both liquid and solid waste</p> <p>Rehabilitation of broken down water systems</p> <p>Increase the Number of Environmental Health Staff</p> <p>Poor drainage systems</p> <p>Uncovered drainage system in Sogakope Township</p> <p>Improved performance in schools</p> <p>Lack of storage facility for water at Dendo Electoral area</p>
	Education	<p>Provision of community libraries</p> <p>Adequate supply of text books for pupils</p> <p>Improved condition of KG School Blocks</p> <p>Improved condition of Primary School Blocks</p> <p>Improved condition of JHS Blocks</p> <p>Improved condition of TVET Blocks</p> <p>Completion of uncompleted Classroom Blocks</p> <p>Provision of New Classroom Blocks at all levels</p> <p>Provision of Teachers' Accommodation at all levels</p> <p>provision of furniture for school children</p> <p>Expansion of School Feeding programme</p> <p>provision of a Computer Laboratory (ICT Centres)</p>
	Health	Improved health services delivery

		Adequate facilities for the operations CHPS provision of additional health facilities Upgrading of Health centres at Adutor and Hikpo provision of Nurses bungalow Provision of logistics to enhance health service delivery
	Security	Provision of Police post at Amedorme Adequate police visibility to combat criminals Extension of electricity to the newly developing settlements Adequate supply of street lights
	Social protection	Scaling up the implementation of the LEAP Programme
	Employment	Improved artisan skills for the youth to enhance employment opportunities
	Other infrastructure	Provision of community centres

## 2.5 Harmonisation of Community needs and aspirations with Identified Development Problems/Issues from review Performance and Profiling from 2022-2025

To ensure the degree of harmony between the Community Needs and Aspirations as obtained from the communities, and the identified development Problems/Issues from the Review of the Performance of Medium Term Development Plan 2022-2025; and issues emanating from the current Profiling of the District. The identified development issues were harmonized with the need and aspirations of the communities to ensure that policies and programmes that will arise from the development issues will reflect communities' aspirations and interests. The general issues are presented in Table 2.36

Table 2.36 Harmonisation of Community needs and aspirations with Identified Development Problems/Issues from review Performance and Profiling from 2022-2025

Community needs and aspirations	Identified key development gaps/problems/issues (from Performance and Profile)	SCORE
4. Provision of market infrastructure 5. Improved conditions of existing market infrastructure 6. paving of Markets floor	Poor state/ inadequate market facilities	2
	Unwillingness to honor tax obligations by business men and women	2
	Loopholes in the revenue being collected	2
	Weak capacity to mobilize adequate revenue for development	2
	High cost of credit	1
	High level of illiteracy among the operatives in MSME leading to poor adoption of improved technology	1
	Low savings and capital for expansion of businesses in the sector	1

	Limited collaboration between public research institutions and businesses on product, service and process innovation	0
	Difficulty in accessing credit facilities by businesses	
Improved access roads to Avu lagoon tourist site	Poor road network to Tourist Site	2
	Untapped tourism Strengths	1
	Declining soil fertility	0
	High post-harvest losses	0
	Limited storage facilities	0
Access to market for farm produce	Inadequate market for farm produce	1
Improved access to farm inputs and implements	Limited access to farm inputs and implements	2
	Inadequate agribusinesses along the value chain	1
	Difficulty in accessing land for farming	1
Improved access to credit facilities for farming	Inadequate investments capital for the youth in the agricultural sector	2
Improved access to irrigation facilities for enhanced agriculture development	Inadequate irrigation facilities	2
Improved access to agro-processing machines for processing Gari		1
Opening of access roads to farms	Poor condition of access roads/no access roads to farms	2
Improved access to Agricultural extension Officers	Limited number of extension officers	2
	Limited technology in farming	2
	Limited access to veterinary services	1
	Limited appreciation of Climate Change and Green Economy Issues	2
	Bush fires	1
	Farming along the river banks	1
	High crop failures due to shortages in rains/floods	2
	Low incomes of farmers leading to poverty	2
	Depleting mangrove resources	2
Provision of bridges/culverts over streams and valleys to enhance access to farms		2
Improve the condition of road to communities	Poor condition of roads linking Sogakope to other communities	2
Improved condition of existing roads within settlements	Poor road network linking the various sections of the District capital and other major towns	2
Improved condition of existing roads linking settlements	Poor condition of the High ways, urban roads and feeder roads	2
Provision of culverts on the streets on streams and springs to promote access	Limited drains along the roads at built-up areas causing rapid deterioration of roads in communities	2
	Poor condition of vehicles due to poor maintenance	1
Provision of speed rumps on main roads		1

Improved planning and zoning of new settlement areas	Difficulty in zoning due to family ownership of land as each family prefer the highest and best use of the parcels	2
	Access to land for communal use is difficult	1
	Difficulties in implementing local development plans as a result of poor cooperation of residents	2
Improved management of public toilets	Inadequate sanitary facilities at homes and public places	2
Provision of potable water	Inadequate water facilities	2
1. Completion of uncompleted water systems 2. Rehabilitation of broken water systems	Broken down/uncompleted water systems in communities	2
Improved sanitation services	Poor management of solid waste	2
1. Provision of Institutional Toilets 2. Scale up the implementation of CLTS	Inadequate sanitation facilities at some schools and health facilities	2
Arrest of stray animals		2
1. Provision of Refuse collection containers 2. Improved management of both liquid and solid waste	Lack/Inadequate refuse collection containers	2
Rehabilitation of broken down water systems	Poor management of water systems due to absence of WATSANs	2
Increase the Number of Environmental Health Staff		0
1. Poor drainage systems 2. Uncovered drainage system in Sogakope Township	Poor drainage systems and Management in the communities	2
Improved performance in schools	Poor performance at both BECE and WASSCE Examinations	2
	Poor performance of School Management Committees	1
1. Provision of community libraries 2. Adequate supply of text books for pupils	Inadequate teaching and learning materials	2
1. Improved condition of KG School Blocks 2. Improved condition of Primary School Blocks 3. Improved condition of JHS Blocks 4. Improved condition of TVET Blocks 5. Completion of uncompleted Classroom Blocks	Poor condition of some school blocks	2
Provision of New Classroom Blocks at all levels	Inadequate School blocks	2
Provision of Teachers' Accommodation at all levels	Inadequate Accommodation for Teachers	2
provision of furniture for school children	Inadequate furniture at Schools	2
	Inadequate logistics at GES to ensure effective monitoring of service delivery	1
Expansion of School Feeding programme	Low enrolment at community schools	2
provision of a Computer Laboratory (ICT Centres)	Inadequate Computer Laboratories	2
Lack of storage facility for water at Dendo Electoral area	Inadequate supply of water and sanitation facilities	2
	Low immunization coverage of all antigens	0
	Low TB case detection and index of suspicion	0
	Low ANC Registrants	0
	Poor health seeking behavior among populace	2
	High prevalence of non-communicable diseases	2
	Low coverage of Family Planning Acceptors	2
	Increased Teenage Pregnancy	2

	High Maternal Death rate	2
	Inadequate Supportive Supervision to all health facilities	2
	Low vitamin A coverage	2
	Stigmatization and inadequate community support for mental health services	2
	Low detection of underweight cases	2
	Inadequate preventive and protective actions	2
	Focusing on addressing Substance Abusive	2
1. Adequate facilities for the operations CHPS 2. provision of additional health facilities 3. Upgrading of Health centres at Adutor	Lack/Inadequate health facilities	2
provision of Nurses bungalow	Lack/poor accommodation for health workers	2
Provision of logistics to enhance health service delivery	Logistic constrains e.g. computers, motorbikes	2
	Weak prioritization of gender issues leading to the absence or little budget allocation for gender and development	1
	Low participation of women in local level elections	0
	Overburdened household chores on women and girls	2
Scaling up the implementation of the LEAP Programme	High incidence of poverty	2
Provision of Police post at Amedorme		1
Adequate police visibility to combat criminals		2
Improved artisan skills for the youth to enhance employment opportunities	High unemployment among the youth	2
	Inadequate accommodation facilities for staff of the Assembly	0
	Weak collaboration among decentralised departments within the District	0
	Weak response to disaster issues	0
Extension of electricity to the newly developing settlements		0
Adequate supply of street lights	inadequate/lack of streetlights	1
Provision of community centres		1
<b>Average Score</b>		<b>1.49</b>

<b>Key</b>	<b>Score</b>
Strong relationship	2
Weak relationship	1
No relationship	0

From the Table 2.34 there is weak harmony between community needs/aspirations and the identified development gaps from the review of performance of the MTDP 2022-2025 and issues identified from the profile of the District. This is because of two main issues including the fact that some of the issues or gaps from the Performance Review and the Profile were service delivery Weakness and were not directly linked to the communities. These issues relate largely to the Assembly and its departments in

their delivery of services and are therefore institutional Threats or gaps. Although, the communities did not prioritize such issues, they are still relevant in the District’s development. The communities were also interested in issues, which they perceived could easily be provided within the period of the current plan. Similarly, a good number of new issues were recorded from the community engagements, which had no relationship with the existing issues but require redress. This therefore means that the paradigm of development is gradually. In addition, there were some issues, which emanated as gaps from the performance review which are no longer relevant to the people. Those under this category were therefore removed from the list of development priorities.

The harmonized key development issues with implication for 2026-2029 is presented in a matrix indicated in table 2.37. These harmonized key development issues are to form the basis for development interventions in the Medium Term Development Plan 2026-2029.

**Table 2.37: Summary of key development issues**

Development Dimensions	Sectors	Key Identified issues (as harmonized with inputs from the performance review, profiling and community needs and aspirations)
Economic Development	Trade and revenue mobilization	<ul style="list-style-type: none"> <li>• Poor state and lack of market facilities</li> <li>• Weak capacity to mobilize adequate revenue for development</li> <li>• Leakages of the revenue being collected</li> <li>• Unwillingness of residents to honor tax obligations</li> </ul>
Economic Development	Tourism and MSME development	<ul style="list-style-type: none"> <li>• High cost of credit</li> <li>• Difficulty in accessing credit facilities by businesses</li> <li>• High level of illiteracy among the operative in MSME leading to poor adoption of improved technology</li> <li>• Poor road network to Tourist Sites</li> <li>• Untapped tourism Strengths</li> <li>• Low savings and capital for expansion of businesses in the sector</li> </ul>
Economic Development	Agriculture development	<ul style="list-style-type: none"> <li>• Declining soil fertility</li> <li>• Inadequate market for farm produce</li> <li>• High post-harvest losses</li> <li>• Limited storage facilities</li> <li>• Limited access to farm inputs and implements</li> <li>• Difficulty in accessing land for farming</li> <li>• Inadequate irrigation facilities</li> <li>• Poor condition of access roads/no access roads to farms</li> <li>• Limited number of extension officers</li> <li>• Limited technology in farming</li> <li>• Limited access to veterinary services</li> <li>• Limited appreciation of Climate Change and Green Economy Issues</li> <li>• Tree harvesting (illegal felling of mangrove for firewood)</li> <li>• Bush fires</li> <li>• Inappropriate farming practices</li> <li>• High crop failures due to shortages in rains/floods</li> <li>• Low incomes of farmers leading to poverty</li> <li>• Destruction of farm crops by stray animals</li> </ul>
Social Development	Educational Sector	<ul style="list-style-type: none"> <li>• Poor performance at both BECE and WASSCE Examinations</li> <li>• Poor supervision of teachers</li> <li>• Inadequate teaching and learning materials</li> <li>• Inadequate logistics at GES to ensure effective monitoring of service delivery</li> <li>• Poor condition of education directorate</li> </ul>

		<ul style="list-style-type: none"> <li>• Low enrolment at some community schools</li> <li>• Poor condition of some school blocks</li> <li>• Inadequate School blocks</li> <li>• Inadequate furniture for schools</li> <li>• Inadequate smart libraries</li> <li>• Inadequate supply of water and sanitation facilities in most public schools</li> <li>• Indiscipline in both basic and secondary schools among students.</li> <li>• Inadequate teaching staff especially at the rural areas</li> <li>• Encroachment of school lands by private developers</li> <li>• Inadequate accommodation facilities for teachers in some rural schools</li> </ul>
Social Development	Health Sector	<ul style="list-style-type: none"> <li>• School dropout due to teenage pregnancy</li> <li>• Inadequate logistics for the implementation of CHPs</li> <li>• Some CHOs serving a larger population</li> <li>• Non – functioning community health committees</li> <li>• Poor treatment of clients by health workers at some health centers.</li> <li>• Lack CHPS and Health Centers in some communities</li> <li>• Poor condition of some health facilities</li> <li>• Inadequate health personnel</li> <li>• High rate of drugs and substance abuse</li> <li>• High of level of mental illness</li> <li>• Inadequate supply of water and sanitation facilities in some health facilities</li> <li>• Inadequate accommodation facilities for health staff in some rural health facilities</li> </ul>
Social Development	Social Welfare	<ul style="list-style-type: none"> <li>• Low participation of women in local level elections</li> <li>• High unemployment among the youth especially women</li> <li>• Weak prioritization of gender issues leading to low budget allocation for gender and gender related development issues</li> <li>• Overburdened household chores on women and girls</li> <li>• Inadequate logistics for Social Welfare department to deliver their mandatory services</li> <li>• Few number of females completing tertiary education.</li> </ul>
Social Development	Water and Sanitation	<ul style="list-style-type: none"> <li>• Inadequate potable water supply/water rationing</li> <li>• Broken down/uncompleted water systems in communities</li> <li>• Poor management of water systems due to absence of WATSANs</li> <li>• Inadequate sanitation facilities especially in some basic schools and secondary schools</li> <li>• Inadequate refuse collection containers</li> <li>• Poor drainage systems in the communities</li> <li>• Lack of engineered land field site for the District</li> <li>• Open defecation</li> </ul>
Environment, Infrastructure and Human Settlements	Roads, streetlight, electricity and drainage system	<ul style="list-style-type: none"> <li>• Poor condition of urban and feeder roads</li> <li>• Lack of proper drains along the roads at built-up areas causing rapid deterioration of roads in communities</li> <li>• Lack of access roads within the major towns and the new settlements and between settlements</li> <li>• Limited speed bumps on High Ways roads leading to over speeding and accidents</li> <li>• Inadequate and lack of maintenance of streetlights</li> <li>• Limited supply of ECG meters</li> </ul>

		<ul style="list-style-type: none"> <li>• Some newly developed areas and rural communities not connected to national grid</li> </ul>
Environment, Infrastructure and Human Settlements	Physical and spatial planning	<ul style="list-style-type: none"> <li>• Difficulty in zoning due to family ownership of land as each family prefer the highest and best use of the parcels</li> <li>• Access to land for communal use is difficult</li> <li>• Difficulties in implementing local development plans as a result of poor cooperation of residents</li> <li>• Lack of District Spatial Development Framework, Structural Plans and limited number of Local Plan making of the entire District difficult</li> <li>• Some pockets of disputes about ownership of lands making it difficult.</li> </ul>
Environment, Infrastructure and Human Settlements	Disaster management	<ul style="list-style-type: none"> <li>• Weak response to disaster issues</li> <li>• Frequent flooding incidents</li> <li>• Lack of emergency equipment and materials to respond to disaster victims.</li> <li>• Inadequate knowledge on disasters</li> <li>• Poor early warning systems</li> <li>• Poor coordination among key institutions on disaster management and response</li> <li>• Inadequate infrastructure for emergency response</li> <li>• Weak social protection system for victims of disasters</li> </ul>
Governance, Corruption and Public Accountability	Governance, Corruption and Public Accountability	<ul style="list-style-type: none"> <li>• High incidence of poverty</li> <li>• Leakage of internally generated funds</li> <li>• Inadequate office space and accommodation facilities for staff of the Assembly</li> <li>• Inadequate Office Accommodation for the police, Fire service and Ambulance department</li> <li>• Rampant burglary issues in the District</li> <li>• Underperformance of District development plan and budget due to low or non-releases of statutory funds by central government to execute planned development projects.</li> <li>• Inadequate logistics such as laptops, printers, office furniture etc. for decentralized departments to function well</li> <li>• Inadequate financial, logistical and human resources</li> </ul>
Implementation, Coordination, Monitoring and Evaluation	Implementation, Coordination, Monitoring and Evaluation	<ul style="list-style-type: none"> <li>• Inadequate capacity for plan preparation and implementation by heads of departments</li> <li>• Delay in the release of approved funds</li> <li>• Weak collaboration in the design and implementation, M&amp;E of government programmes and projects</li> <li>• Weak linkages between CSO/NGO plans and MTDPs</li> <li>• Weak coordination of programmes and projects</li> <li>• Low demand and utilization of M&amp;E results</li> <li>• Untimely release of funds for M&amp;E activities</li> <li>• Inadequate evaluations at all levels</li> <li>• Limited M&amp;E competencies</li> <li>• Weak and fragmented M&amp;E information systems at all levels</li> <li>• Weak reporting and unreliable M&amp;E data</li> <li>• Different reporting cycles and formats by departments</li> <li>• Poor record keeping and documentation</li> <li>• Inadequate data and information storage systems</li> </ul>

## 2.6 Development Projections

Projections are very crucial for the attainment of the District development goals. It is also vital in decision-making since society is dynamic and cannot be predicted. However, knowledge relating to the current and future needs of the District is very important for informed decision making regarding the kind of development interventions required. Besides, Population dynamics in a given society is very critical for all planning exercises. This is because it is both a consequence and determinant of development. Human resources and needs vary according to the size, composition and distribution of the population. It is for these reasons that the population projections for the planned period have been made to facilitate the calculation of services and facilities needed for the period. Using a growth rate of 2.3% (2010-2021) and the 2021 base year's population of 113,114 the arithmetic and geometric models were applied in estimating the populations for the planned period.

### 2.6.1 The Exponential Method

The Exponential formula is defined as:

$$P_t = P_0 e^{rt}$$

Where P = the current (base Year) population

$P_t$  = the future population

r = the population growth rate

t = the projection period in years

e = 2.718282 is a constant

The model used was based on the following assumptions:

- Population growth rate will remain constant
- Net migration will be zero
- Fertility will remain unchanged
- The age-sex structure will remain the same over the planned period

The outcome of the population projections for the plan period is shown Table 4.1.

**Table 2.37: Estimated Population for the District**

Year	Male	Female	Total
2025	56,625	62,200	118,825
2026	57,212	62,862	120,074
2027	57,867	63,603	121,470
2028	58,523	64,348	122,871
2029	59,180	65,098	124,278

### 2.6.2 Educational projections

#### 2.6.2.1 Demand for Teachers

The national standard for teacher- pupil ratio for Kindergarten is 1: 35, primary; 1:35 and Junior High School (J.H.S); 1:30

**Table 2.38: Estimated Demand for Teachers (2026-2029)**

Year	KG				Primary school				J.H.S.			
	Exist ing	Required	Back log	Surpl us	Exist ing	Required	Back log	Surpl us	Exist ing	Required	Back log	Surp lus

2025	214	189	-	19	546	512	-	121	464	167	-	310
2026	214	191	-	17	546	518	-	28	464	286	-	178
2027	214	193	-	15	546	524	-	22	464	289	-	175
2028	214	195	-	13	546	530	-	16	464	292	-	172
2029	214	198	-	10	546	536	-	10	464	296	-	168

## 2.6.3 Projections for Potable Water

### 2.6.3.1 Demand for Boreholes

The demand for potable water provision (boreholes/Mechanized boreholes) was established using the Community Water and Sanitation standards of 300 people per borehole (largely for rural residents) and 5000 people per mechanized borehole (for urban residents).

**Table 2.39: Projected Demand for Boreholes and Mechanized Systems (2026-2029)**

Year	Population		Served Population		Under served		Water Systems Required	
	Urban	Rural	Urban	Rural	Urban	Rural	Urban (Mechanized Systems)	Rural (Boreholes)
2026	37,343	82,731	23,825	50,880	13,518	31,851	3	106
2027	37,777	83,693	24,102	51,471	13,675	32,222	3	107
2028	38,213	84,658	24,380	52,065	13,833	32,593	3	109
2029	38,650	85,628	24,659	52,661	13,991	32,967	3	110

## 2.6.4 Health projections

### 2.6.4.1 Demand for Doctors

By the planning standards of Doctor/patient ratio (1:5,000), there will be pressure on the existing Doctor in the District.

**Table 2.40: Projected Demand for Doctors (2026-2029)**

Year	Population	Existing	Required	Backlog
2026	120,074	7	24	17
2027	121,470	7	24	17
2028	122,871	7	25	18
2029	124,278	7	25	18

### 4.1.4.2 Demand for Nurses

With a planning standard of one nurse for 1000 people, the projected demand for nurses for the planned period is as contained in Table 4.5.

**Table 2.41: Projected Demand for Nurses (SRN)**

Year	Population	Existing	Required	Backlog
2026	120,074	94	121	27
2027	121,470	94	122	28

2028	122,871	94	123	29
2029	124,278	94	124	30

### 2.6.4.3 Demand for Health Facilities

Using a population threshold of 20,000 people for a Health Centre; 5,000 people for a CHPS compound, the Table 4.6 shows the projected demand for various health facilities in the District over the medium term.

**Table 2.42: Projected Demand for Health Facilities**

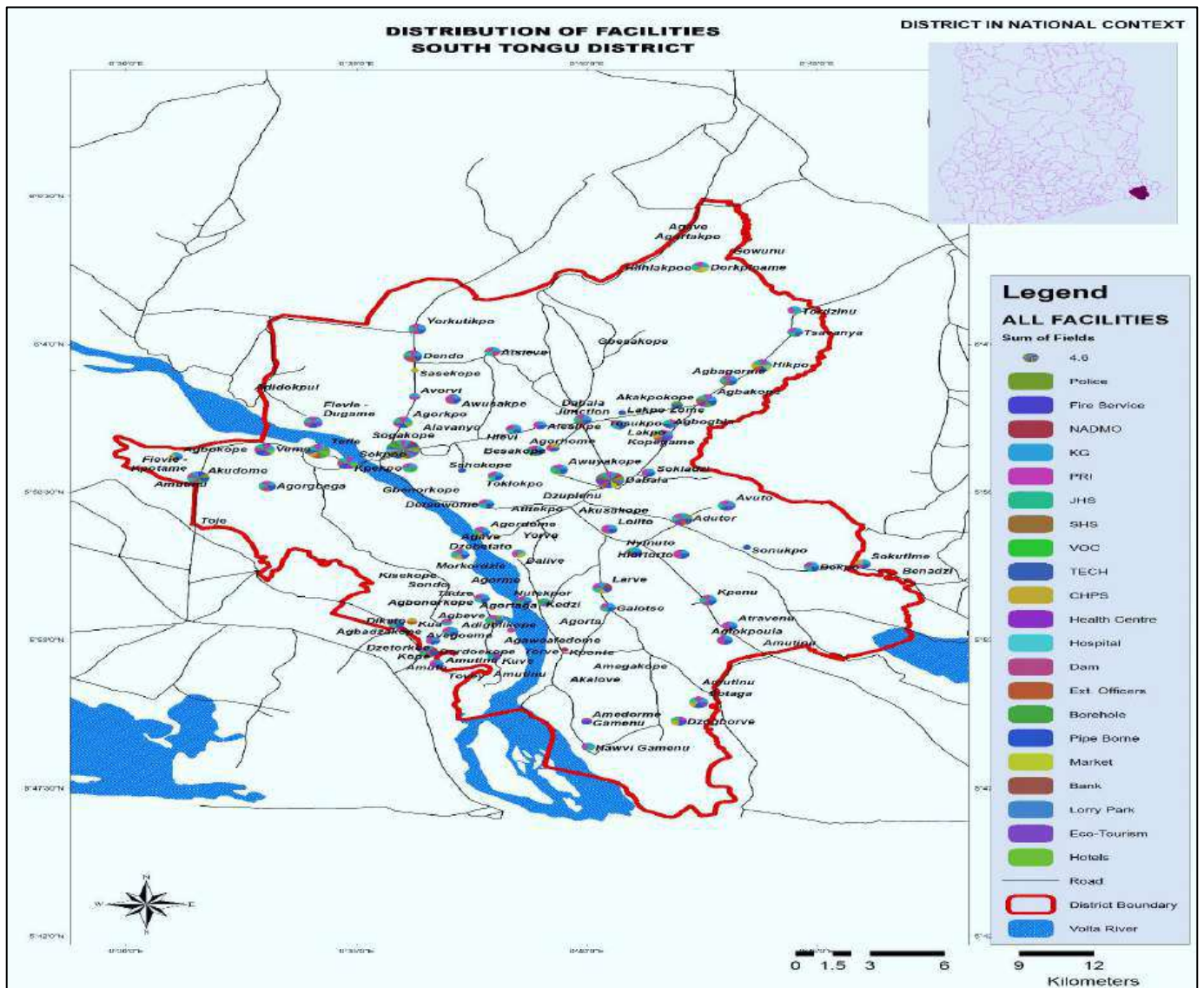
Year	District Hospital			Health Centre			CHPS Compound		
	Existing	Required	Backlog	Existing	Required	Backlog	Existing	Required	Backlog
2026	2	1	-	4	6	2	19	24	5
2027	2	1	-	4	6	2	19	24	5
2028	2	1	-	4	6	2	19	26	7
2029	2	1	-	4	6	2	19	26	7

### 2.6.5 Prioritization of Spatial Location

The Poverty Profiling and Mapping Analysis presented a general overview with respect to the social and economic status of communities in the District. As a result, the District has been categorized into five Poverty Pockets. Regions with stream deprivation will be considered immensely in the direction of development interventions hence; their implementation. Besides these, some of the communities lack basic social amenities, which are necessary for the reduction in poverty. Communities with acute problems relating to the lack of potable water, health facility and educational facilities will be extensively considered. The following constitute the general criteria for the spatial location of projects in the District:

1. Needy or deprived areas in terms of socio-economic infrastructure and services, accessibility, and spatial/ economic interaction.
2. Access to deprived areas where the production of agro-based raw material, food crops and export crops can be improved.
3. Areas with the necessary threshold population. Notwithstanding this, some deprived areas will be supported.
4. Areas with the capacity to ensure high returns to investment due to availability of needed facilities and markets.
5. Areas that have the potential to enhance community participation in the decision-making process and other issues related to good governance.
6. Areas, which are centrally located to make information flow and sharing of cost-benefit effective. This includes areas that can generate local revenue for the District.
7. Communities with a proven capacity for self-help and local initiative.

Situational Map of key facilities in South Tongu District



## CHAPTER THREE DEVELOPMENT ISSUES/PRIORITIES

### 3.1 Introduction

This part of the Plan contains the harmonized key development issues with implication for 2026-2029. The harmonized Development issues as stated above are varied and wide and are too overwhelming to be surmounted within the period of the Plan. Besides, resource Weakness places limitations on the capacity of the District to achieve the desired level of development within a given time period. Thus, under the circumstance, the best approach to allocate available resource in the best interest of the people is to prioritize the development issues.

It is quite understandable that the focus of planning is to allocate resources, which for most parts are usually scarce. However, in order to achieve synergy and most importantly to enhance efficiency and effectiveness in the allocation of scarce resources, appropriate criteria need to be defined to ensure value for money. The criteria below formed the basis upon which the identified issues of the District were prioritized to inform the design of appropriate development interventions. They include:

1. Severity and diversity of the problem and intended benefits (social, economic, environmental, etc.) of addressing it.
2. Significant multiplier effect on economic efficiency, e.g., attraction of investors, job creation, increases in incomes and growth.
3. Significant linkage to meeting basic human needs and rights.
4. Significant multiplier effects in the sustainable spatial development of designated spaces or corridors.
5. Opportunities for addressing key cross-cutting development themes such as; marginalised and vulnerable groups, gender equality and equity with respect to practical and strategic needs and interests; environmental concerns including climate, biodiversity, disaster risk reduction, etc.

Based on above, DPCU prioritized these issues by establishing the degree of feasibility of their implementation given the available resources.

### 3.2 Impact Analysis

This stage is set for the issues, which have passed the prefeasibility to be subjected to further checks. This includes ascertaining the possible impacts of the issues. To achieve this, DPCU examined each of the issues to determine their linkage effect on meeting basic human needs/right as well as their multiplier effect on economic efficiency by assessing whether the intervention could lead to the attraction of investors to the District, create jobs, increase household income, and expand local economic growth. Furthermore, the issues were also analysed based on their ability to positively change the life of the people, ensure balanced development, promote the sustainable utilisation of natural resources, enhance positive cultural values, promote climate change mitigations and adaptations and achieve strong and effective institutional reforms in the District. Crosscutting issues such HIV and AIDS, gender and nutrition were also prioritized.

**Table 3.1: Impact Analysis**

<b>Prioritized Issues</b>	<b>Criteria for Impact Analysis</b>
Leakages of the revenue being collected	Significant multiplier effect on economic efficiency
Weak capacity to mobilize adequate revenue for development	Significant multiplier effect on economic efficiency
Unwillingness residents to honour tax obligations	Significant multiplier effect on economic efficiency
High cost of credit	Significant multiplier effect on economic efficiency
Difficulty in accessing credit facilities by businesses	Significant multiplier effect on economic efficiency
Poor state and lack of market facilities	Significant multiplier effect on economic efficiency
High level of illiteracy among the operative in MSME leading to poor adoption of improved technology	Significant multiplier effect on economic efficiency
Low domestic saving rate	Significant multiplier effect on economic efficiency
Untapped tourism potentials	Balanced development & Significant multiplier effect on economic efficiency
Poor tourism infrastructure and Service	Balanced development & Significant multiplier effect on economic efficiency
Low application of technology especially among small holder farmers	Significant multiplier effect on economic efficiency
Erratic rainfall patterns.	Natural resource utilisation
Low level of irrigated agriculture	Significant multiplier effect on economic efficiency
High cost of energy for irrigation	Significant multiplier effect on economic efficiency
Poor storage and transportation systems	Balanced development & Significant multiplier effect on economic efficiency
Poor farm-level practices	Natural resource utilisation
High cost of conventional storage solutions for smallholder farmers	Significant multiplier effect on economic efficiency
Low quality and inadequate agriculture infrastructure	Balanced development & Significant multiplier effect on economic efficiency
Inadequate disease monitoring and surveillance system	Institutional reforms
Inadequate agribusiness enterprises along the value chain	
Lack of youth interest in agriculture	
Inadequate start-up capital for the youth	
Lack of credit for agriculture	
Inadequate access to land for agriculture production	
Low productivity and poor handling of livestock/ poultry products	
Poor marketing systems	
High cost of aquaculture inputs	
Inadequate development of and investment in processing and value addition	
Poor condition of access roads/no access roads to farms	
Limited number of extension officers and to veterinary	
Poor planning and implementation of sanitation plans	

<b>Prioritized Issues</b>	<b>Criteria for Impact Analysis</b>
Poor agricultural practices which affect water quality	Natural resource utilisation
Unsustainable construction of boreholes and wells	
Inadequate access to water services in urban areas	
Poor quality of drinking water	
Inadequate financing of the water sector institutions	Institutional reforms and Balanced development
High dependency on development partners for support to urban water	Institutional reforms
Poor collection, treatment and discharge of municipal and industrial wastewater.	Institutional reforms, impact on different population groups and Balanced development
High prevalence of open defecation	impact on different population groups and Balanced development
High user fee for sanitation services	Institutional reforms & impact on different population groups
Increasing demand for household water supply	impact on different population groups and Balanced development
Poor planning for water at MMDAs	
Inadequate maintenance of facilities	
Poor sanitation and waste management	Institutional reforms, impact on different population groups and Balanced development
<ul style="list-style-type: none"> <li>• Poor performance at both BECE and WASSCE Examinations</li> <li>• Poor supervision of teachers</li> <li>• Inadequate teaching and learning materials</li> <li>• Inadequate logistics at GES to ensure effective monitoring of service delivery</li> <li>• Low enrolment at community schools</li> <li>• Poor condition of some school blocks</li> <li>• Inadequate School block</li> <li>• Inadequate furniture for schools</li> <li>• Inadequate smart libraries</li> <li>• Inadequate supply of water and sanitation facilities in most public schools</li> <li>• Indiscipline in both basic and secondary schools among students</li> </ul>	
Inadequate funding sources for education	
Inadequate use of teacher-learner contact time in schools	
Low participation of females in learning of science, technology, engineering and mathematics	Gender equality with respect to practical and strategic needs and interests
Inadequate and inequitable access to education for PWDs and people with special needs at all levels	impact on different population groups & Significant multiplier effect on economic efficiency
Gaps in physical access to quality health care	
Poor quality of healthcare services	
Inadequate and inequitable distribution of critical staff mix Inadequate capacity	Institutional reforms
Inadequate financing of the health sector	
Inadequate coverage of reproductive health and family planning services	
High stigmatization and discrimination of HIV and AIDs	Prevent HIV and AIDS infection and elimination of stigmatization
Lack of comprehensive knowledge of HIV and AIDS/STIs, especially among the vulnerable groups	Institutional reforms & Prevent HIV and AIDS infection and elimination of stigmatisation
High incidence of HIV and AIDS among young persons	Prevent HIV and AIDS infection and elimination of stigmatisation
Inadequate food safety training and services	Nutrition

<b>Prioritized Issues</b>	<b>Criteria for Impact Analysis</b>
Prevalence of micro and macro-nutritional deficiencies	Nutrition & Impact on different population groups
Inadequate financial support for family planning programmes	Impact on different population groups & Institutional reforms
Growing incidence of child marriage, teenage pregnancy and accompanying school drop-out rates	
Inadequate sexual education for young people	
High school drop-out rates among adolescent girls	
High youth unemployment	
Disparity in rate of decline in poverty across the country and amongst different population groups	
Unequal spatial distribution of the benefits of growth	
Ineffective inter-sectoral coordination of child protection and family welfare	
Limited coverage of social protection programmes targeting children	
Low awareness of child protection laws and policies	
Weak enforcement of laws and rights of children	
High incidence of children's rights violation	
Inadequately resourced correctional facilities	
Inadequate professional staff assisting with reformation of children in correctional centres and their re-integration into society	
Limited understanding of issues of disability and negative attitudes towards children with disabilities and special needs	Impact on different population groups & Institutional reforms
Unfavorable socio-cultural environment for gender equality	Institutional reforms & Gender equality with respect to practical and strategic needs and interests
Gender disparities in access to economic opportunities	Gender equality with respect to practical and strategic needs and interests & Significant multiplier effect on economic efficiency
Weak social protection systems	Institutional reforms & Gender equality with respect to practical and strategic needs and interests
Inadequate and limited coverage of social protection programmes for vulnerable groups	
Ineffective coordination of social protection interventions	
Lack of sustainable funding	Institutional reforms
Inadequate opportunities for persons with disabilities to contribute to society	Impact on different population groups & Significant multiplier effect on economic efficiency
Loss of mangrove cover	
Inappropriate farming practices	
Indiscriminate use of weedicides	
Over exploitation and inefficient use of forest resources	
Low institutional capacity to adapt to climate change and undertake mitigation actions	
Inadequate inclusion of gender and vulnerability issues in climate change actions	
Inadequate institutional capacity to access global funds	
Vulnerability and variability to climate change	Impact on different population groups & Significant multiplier effect on economic efficiency

<b>Prioritized Issues</b>	<b>Criteria for Impact Analysis</b>
Limited capacities of local financial institutions to support Ghanaian investments in oil and gas industry development	Significant multiplier effect on economic efficiency & Institutional reforms
Inadequate educational and institutional capacity to support local expertise and skills development in the oil and gas industry	
Poor quality and inadequate road transport network	
Inadequate investment in road transport infrastructure provision and maintenance	Impact on different population groups & Significant multiplier effect on economic efficiency
Poor transportation management particularly in urban areas	
High incidence of road accidents	
Poor and inadequate maintenance of infrastructure	Impact on different population groups, Significant multiplier effect on economic efficiency & Resilience and disaster risk reduction
Recurrent incidence of flooding	
Poor waste disposal practices	Impact on different population groups, Significant multiplier effect on economic efficiency & Institutional reforms
Poor drainage system	
Silting and choking of drains	Impact on different population groups & Significant multiplier effect on economic efficiency
Uncovered drains	
Poor landscaping	
Improper disposal of solid and liquid waste	
lack of engineered landfill sites and waste water treatment plants	
Low utilisation of waste as an energy resource	
Difficulty in the extension of grid electricity to remote rural and isolated communities	
Inadequate, reliable and comprehensive data on land ownership	Impact on different population groups, Significant multiplier effect on economic efficiency & Balanced development
Inadequate spatial plans for regions and MMDAs	
Inadequate human and institutional capacities for land use planning	
Scattered and unplanned human settlements	Significant multiplier effect on economic efficiency & Institutional reforms
Limited collaboration between public research institutions and businesses on product, service and process innovation	
Poor coordination in preparation and implementation of development plans	Significant multiplier effect on economic efficiency
Poor linkage between planning and budgeting at national, regional and District levels	
Weak spatial planning capacity at the local level	
Inadequate exploitation of local opportunities for economic growth and job creation	Significant multiplier effect on economic efficiency
Inadequate and poor quality equipment and infrastructure	
Inadequate personnel	Significant multiplier effect on economic efficiency
Weak collaboration among security agencies.	
Weak relations between citizens and law enforcement agencies	
Limited participation by the diaspora in development	Significant multiplier effect on economic efficiency

Having applied the list of development issues to the criterion of impact analysis, the DPCU came out with sustainable prioritized issues for implementation in the next plan period. These sustainable prioritized development issues are therefore categorized under the various development dimensions of the National Medium Term Policy Framework presented in Table 3.2 below.

Table 3.2 Development Issues/Priorities

DEVELOPMENT DIMENSIONS	FOCUS AREAS OF MTDP 2026-2029	SUSTAINABLE DEVELOPMENT PRIORITISED ISSUES
Economic Development	Macro Economy	<ul style="list-style-type: none"> <li>• Weak capacity to mobilize adequate revenue for development</li> <li>• Leakages of the revenue being collected</li> <li>• Unwillingness residents to honour tax obligations</li> </ul>
Economic Development	Private Sector Development	<ul style="list-style-type: none"> <li>• High cost of credit</li> <li>• Difficulty in accessing credit facilities by businesses</li> <li>• Poor state and lack of market facilities</li> <li>• High level of illiteracy among the operative in MSME leading to poor adoption of improved technology</li> <li>• Low savings and capital for expansion of businesses in the sector</li> <li>• Limited collaboration between public research institutions and businesses on product, service and process innovation</li> </ul>
Economic Development	Tourism And Creative Arts Development	<ul style="list-style-type: none"> <li>• Poor road network to Tourist Sites</li> <li>• Untapped tourism Strengths</li> </ul>
Economic Development	Agriculture And Rural Development	<ul style="list-style-type: none"> <li>• Declining soil fertility</li> <li>• Inadequate market for farm produce</li> <li>• High post-harvest losses</li> <li>• Limited storage facilities</li> <li>• Limited access to farm inputs and implements</li> <li>• Difficulty in accessing land for farming especially women and the youth</li> <li>• Lack of youth interest in agriculture</li> <li>• Inadequate irrigation facilities</li> <li>• High cost of energy for irrigation</li> <li>• Poor condition of access roads/no access roads to farms</li> <li>• Limited number of extension officers</li> <li>• Limited technology in farming</li> <li>• Limited access to veterinary services</li> <li>• Inappropriate farming practices</li> <li>• High crop failures due to shortages in rains/floods</li> <li>• Low incomes of farmers leading to poverty</li> <li>• High cost of production inputs</li> <li>• Inadequate agribusinesses along the value chain</li> <li>• Inadequate investments capital for the youth in the agricultural sector</li> </ul>
Social Development	Education And Training	<ul style="list-style-type: none"> <li>• Poor performance at both BECE and WASSCE Examinations</li> <li>• Poor supervision of teachers</li> <li>• Inadequate teaching and learning materials</li> <li>• Inadequate logistics at GES to ensure effective monitoring of service delivery</li> </ul>

DEVELOPMENT DIMENSIONS	FOCUS AREAS OF MTDP 2026-2029	SUSTAINABLE DEVELOPMENT PRIORITISED ISSUES
		<ul style="list-style-type: none"> <li>• Low enrolment at community schools</li> <li>• Poor condition of some school blocks</li> <li>• Inadequate School block</li> <li>• Inadequate furniture for schools</li> <li>• Inadequate smart libraries</li> <li>• Inadequate supply of water and sanitation facilities in most public schools</li> <li>• Indiscipline in both basic and secondary schools among students.</li> <li>• Low participation of females in learning of science, technology, engineering and mathematics</li> <li>• Inadequate and inequitable access to education for PWDs and people with special needs at all levels</li> </ul>
Social Development	Health And Health Services	<ul style="list-style-type: none"> <li>• Inadequate logistics for the implementation of CHPs</li> <li>• Some CHOs serving a larger population</li> <li>• Non – functioning community health committees</li> <li>• Poor treatment of clients by health workers.</li> <li>• Lack CHPS and Health Centers in some communities</li> <li>• Poor condition of some health facilities</li> <li>• Inadequate health personnel</li> <li>• High rate of drugs and substance abuse among the youth</li> <li>• High of level of mental illness</li> <li>• Inadequate financing of the health sector</li> </ul>
Social Development	Population Management	<ul style="list-style-type: none"> <li>• Inadequate coverage of reproductive health and family planning services</li> <li>• Inadequate financial support for family planning programmes</li> <li>• Growing incidence of child marriage, teenage pregnancy and accompanying school drop-out rates</li> <li>• Inadequate sexual education for young people</li> <li>• High school drop-out rates among adolescent girls</li> </ul>
Social Development	Employment and Decent Work	<ul style="list-style-type: none"> <li>• High unemployment among the youth especially women</li> </ul>
Social Development	Food & Nutrition Security	<ul style="list-style-type: none"> <li>• Inadequate food safety training and services</li> <li>• Prevalence of micro and macro-nutritional deficiencies</li> </ul>
Social Development	Water, Environmental Sanitation and Hygiene	<ul style="list-style-type: none"> <li>• Inadequate potable water supply/water rationing</li> <li>• Broken down/uncompleted water systems in communities</li> <li>• Poor management of water systems due to absence of WATSANs</li> <li>• Inadequate sanitation facilities especially in some basic and secondary schools</li> <li>• Inadequate refuse collection containers</li> <li>• Poor drainage systems in the communities</li> <li>• Lack of engineered land field site for the District</li> <li>• Open defecation</li> </ul>
Social Development	Disability-Inclusive Development	<ul style="list-style-type: none"> <li>• Inadequate opportunities for PWDs to develop and utilise their potential</li> <li>• Inequitable access to socio-economic incentives for PWDs</li> <li>• Limited understanding of issues of disability and negative attitudes towards children with disabilities and special needs</li> <li>• Weak social protection systems</li> <li>• Ineffective coordination of social protection interventions</li> </ul>
Social Development	Social Protection and Poverty Reduction	<ul style="list-style-type: none"> <li>• Inadequate logistics for Social Welfare department to deliver their mandate</li> <li>• High incidence of poverty among vulnerable households and geographic areas</li> <li>• Inadequate and limited coverage of social protection programmes for vulnerable groups</li> </ul>

DEVELOPMENT DIMENSIONS	FOCUS AREAS OF MTDP 2026-2029	SUSTAINABLE DEVELOPMENT PRIORITISED ISSUES
		<ul style="list-style-type: none"> <li>• Low awareness of child protection laws and policies</li> <li>• Weak enforcement of laws and rights of children</li> <li>• High incidence of children's rights violation</li> <li>• Growing incidence of child marriage, teenage pregnancy and accompanying school drop-out rates</li> <li>• Inadequate sexual education for young people</li> <li>• High school drop-out rates among adolescent girls</li> <li>• Ineffective inter-sectoral coordination of child protection and family welfare</li> </ul>
Social Development	Close gender inequality gap	<ul style="list-style-type: none"> <li>• Low participation of women in local level elections</li> <li>• Weak prioritization of gender issues leading to low budget allocation for gender and gender related development issues</li> <li>• Gender disparities in access to economic opportunities</li> <li>• Unfavorable socio-cultural environment for gender equality</li> </ul>
Environment, Infrastructure and Human Settlements	Roads and drainage infrastructure system and Maintenance	<ul style="list-style-type: none"> <li>• Poor condition of urban and feeder roads</li> <li>• Lack of proper drains/ uncovered drains along the roads at built-up areas causing rapid Silting and choking of drains</li> <li>• Lack of access roads within the major towns and the new settlements and between settlements</li> <li>• Limited speed rumps on High Ways roads leading to over speeding and accidents</li> <li>• Poor maintenance culture</li> <li>• High cost of maintenance</li> <li>• Limited financing for maintenance</li> </ul>
Environment, Infrastructure and Human Settlements	Human Settlements and Land Administration	<ul style="list-style-type: none"> <li>• Difficulty in zoning due to family ownership of land as each family prefer the highest and best use of the parcels</li> <li>• Access to land for communal use is difficult</li> <li>• Weak enforcement of planning and building regulations</li> <li>• Lack of District Spatial Development Framework, Structural Plans and limited number of Local Plan making of the entire District difficult</li> </ul>
Environment, Infrastructure and Human Settlements	Disaster management	<ul style="list-style-type: none"> <li>• Weak response to disaster issues</li> <li>• Frequent flooding incidents</li> <li>• Lack of emergency equipment and materials to respond to disaster victims.</li> <li>• Inadequate knowledge on disasters</li> <li>• Poor early warning systems</li> <li>• Poor coordination among key institutions on disaster management and response</li> <li>• Inadequate infrastructure for emergency response</li> <li>• Weak social protection system for victims of disasters</li> </ul>
Environment, Infrastructure and Human Settlements	Protect and Safeguard the environment	<ul style="list-style-type: none"> <li>• Poor collaboration and coordination among relevant institutions</li> <li>• Illegal sand mining activities</li> <li>• Tree harvesting (illegal felling of mangrove for firewood)</li> <li>• Bush fires</li> </ul>
Environment, Infrastructure and Human Settlements	Water Resources Management	<ul style="list-style-type: none"> <li>• Pollution of water resources</li> <li>• Poor agricultural practices which affect water quality</li> </ul>
Environment, Infrastructure and Human Settlements	Climate Variability and Change	<ul style="list-style-type: none"> <li>• Negative impact of climate variability and change (food insecurity)</li> <li>• High incidence of wildfires</li> <li>• Weak institutional coordination mechanism for climate action</li> <li>• Low institutional capacity to address climate change and variability issues</li> <li>• Limited appreciation of Climate Change and Green Economy Issues</li> </ul>

DEVELOPMENT DIMENSIONS	FOCUS AREAS OF MTDP 2026-2029	SUSTAINABLE DEVELOPMENT PRIORITISED ISSUES
Governance, Corruption and Public Accountability	Deepening Democratic Governance	<ul style="list-style-type: none"> <li>• Inadequate office space and accommodation facilities for staff of the Assembly</li> <li>• Inadequate Office Accommodation for the police, Fire service and Ambulance department</li> <li>• Inadequate logistics such as laptops, printers, office furniture etc. for decentralized departments to function well</li> <li>• Inadequate capacity for plan preparation and implementation by departments</li> </ul>
Governance, Corruption and Public Accountability	Improve Local Governance and Decentralization	<ul style="list-style-type: none"> <li>• Underperformance of District development plan and budget due to low or non-releases of statutory funds by central government to execute planned development projects</li> <li>• Delay in the release of approved funds.</li> </ul>
Governance, Corruption and Public Accountability	Improve Public Accountability	<ul style="list-style-type: none"> <li>• Inadequate Internally Generated Funds (IGF)</li> <li>• Leakage of internally generated funds</li> </ul>
Governance, Corruption and Public Accountability	Civil Society and Civic Engagement	<ul style="list-style-type: none"> <li>• Weak collaboration in the design and implementation of government programmes and projects</li> <li>• Weak collaboration among decentralized departments within the District</li> </ul>
Governance, Corruption and Public Accountability	Improve Security and Public Safety	<ul style="list-style-type: none"> <li>• Inadequate streetlights leading to insecurity such as burglary and other crimes</li> <li>• Rampant burglary issues in the District</li> <li>• High incidence of poverty</li> </ul>
Governance, Corruption and Public Accountability	Enhance Implementation, Coordination, Monitoring and Evaluation systems in the District	<ul style="list-style-type: none"> <li>• Weak coordination of programmes and projects by heads of departments</li> <li>• Inadequate financial, logistical and human resources</li> <li>• Low demand and utilization of M&amp;E results</li> <li>• Untimely release of funds for M&amp;E activities</li> <li>• Limited M&amp;E competencies by decentralized departments</li> <li>• Weak and fragmented M&amp;E information systems at all levels</li> <li>• Weak reporting and unreliable M&amp;E data</li> <li>• Different reporting cycles and formats by departments</li> <li>• Poor record keeping and documentation</li> <li>• Weak institutional memory in the Assembly</li> <li>• Inadequate data and information storage systems</li> </ul>
International Relations	Regional and Global Relations	Limited Diaspora engagement and participation in national development

## CHAPTER FOUR:

### DEVELOPMENT GOALS, OBJECTIVES, STRATEGIES AND PROGRAMMES

#### 4.0 Formulation of Development Goals, Objectives and Strategies

##### 4.1. Development Focus

Development focus is the key issue that needs to be pursued in order to eliminate development problems and bring about improved living conditions of the people in the District. Based on broader consultation, and considering the overarching development gaps of the District, the development focus/theme of the District within this Medium Term is *“To improve upon the general living standard of the people, through investment in productive infrastructural development and the development of human capital of the District”*.

##### 4.1.1 District Development Goals

In pursuing the aim of achieving the District development focus (*To improve upon the general living standard of the people, through investment in productive infrastructural development and the development of human capital of the District*), the District has formulated its Development Goals aimed at addressing the identified prioritized development issues. Goals formulated considered crosscutting and emerging development issues.

The Overall Goal of the District is; ***to achieve sustainable and inclusive Socio-economic Development, through a concerted effort of all stakeholders to create an enabling environment for the growth and development of the private sector-led economy.*** This goal will be achieved through enhance wealth creation, skills development and increased participatory decision making in order to improve the standard of living of citizens. Besides the overall District goal, Assembly has formulated the following sustainable specific goals, objectives, strategies and development programmes outlined under each Development Dimension as illustrated in the table 4.1 below.

Table 4.1: Matrix on Development Goals, Objectives, Strategies and Development Programmes

Prioritized Issues	Goals	Objectives	Aligned National Objectives	Strategies	Development Programme
<b>Dimension/Thematic Area: Economic Development</b>					
<p>1. Weak capacity to mobilize adequate revenue for development</p> <p>2. Leakages of the revenue being collected</p> <p>3. unwillingness residents to honor tax obligations</p>	Promote sustained and inclusive Macro-Economy growth	<p>To build the capacity of revenue staff of the Assembly to increase internal generated funds (IGF) by 30% at the end of 2029</p> <p>To scale-up monitoring of revenue staff in order to block IGF leakages by 90% at the end of 2029</p> <p>To scale-up revenue mobilization campaigns to increase revenue collection from residents by 70% by December, 2029</p>	1.1.4 Ensure improved fiscal performance and sustainability	<p>1.1.4.1 Strengthen revenue institutions and administration to eliminate revenue leakages and diversify revenue</p> <p>1.1.4.4 Enhance revenue mobilization Strengths of the District</p> <p>1.1.4.22 Ensure effective and efficient public investment management</p>	<p>1) Capacity building for revenue staff Programme</p> <p>2) Sustainable resource mobilization programme</p>
<p>7. High cost of credit</p> <p>2. Difficulty in accessing credit facilities by businesses</p> <p>3. Poor state and lack of market facilities</p> <p>4. High level of illiteracy among the operative in MSME leading to poor adoption of improved technology</p> <p>5. High unemployment among the youth especially women</p>	Promote sustained, inclusive and sustainable economic growth, with productive employment and decent work for all	To stimulate progressively the business enabling environment to promote economic growth that ensure women's economic participation and access to resources through partnerships with financial institutions and NGOs by December, 2029	<p>1.3.1 Enhance business enabling environment</p> <p>1.3.3 Improve support for entrepreneurship and MSME development</p> <p>1.4.2 Enhance Domestic Trade</p> <p>1.4.6 Promote women's economic participation and access to resources.</p>		<p>1) Programme for enhancement of market infrastructure</p> <p>2) Promote access to affordable credit facilities especially women programme</p> <p>3) Programme for capacity building of entrepreneurs and MSME</p>

Prioritized Issues	Goals	Objectives	Aligned National Objectives	Strategies	Development Programme
6. Low savings and capital for expansion of businesses in the sector					
7. Poor road network to Tourist Sites 8. Untapped tourism Strengths	Promote sustained, inclusive and sustainable Tourism development to create employment and decent work for all	To devise and implement Programmes and projects to promote sustainable tourism that creates jobs and promotes local culture and products by 20% by December, 2029	1.4.7 Improve connectivity & reduce transport costs  1.5.1 Diversify and expand the tourism industry	1.5.1.3 Develop available and potential tourism sites to meet international standards  1.5.1.5 Encourage community initiatives in tourism development and partner with chiefs and other traditional authorities to promote the commercialization of heritage festivals.  1.5.1.6 Improve tourism infrastructure including road networks leading to tourist centers  1.5.1.8 Promote local cuisines on the menus of hotels and other tourist facilities 1.5.1.11 Promote safety and security in all tourist sites	7. Expansion of roads and other infrastructure under tourism sector programme  2. Programme for sustainable tourism and Creative Arts promotion
7. Declining soil fertility 2. Inadequate market for farm produce 3. High post-harvest losses	Ensure food and income security	To increase the agricultural productivity and the incomes of small-scale food producers, particularly	1.6.1 Create an enabling agribusiness environment  1.6.2 Enhance agricultural production and agri-	1.6.1.2 Build the capacity of farmer-based organizations and other actors along the value chain in marketing,	1) Capacity building of farmer-based organizations and other actors along the value

Prioritized Issues	Goals	Objectives	Aligned National Objectives	Strategies	Development Programme
<p>4· Limited storage facilities</p> <p>5· Limited access to farm inputs and implements</p> <p>6· Difficulty in accessing land for farming</p> <p>7· Inadequate irrigation facilities</p> <p>8· Poor condition of access roads/no access roads to farms</p> <p>9· Limited number of extension officers</p> <p>10· Limited technology in farming</p> <p>11· Limited access to veterinary services</p> <p>12· Limited appreciation of Climate Change and Green Economy Issues</p> <p>13· Inappropriate farming practices</p> <p>14· High crop failures due to shortages in rains/floods</p> <p>15· Limited access to arable land for farming especially women</p> <p>16· Inadequate agribusinesses along the value chain</p>		<p>women and fishers, including through secure and equal access to land, other productive resources and inputs, knowledge, financial services, markets, and opportunities for value addition and non-farm employment by end of December, 2029</p>	<p>business for economic transformation</p> <p>1.6.3 Enhance Sustainable and Resilient Food Production System</p> <p>1.6.4 Promote food transformation (processing and value-addition)</p> <p>1.6.6 Improve post-harvest management</p> <p>1.6.7 Promote agriculture as a viable business among the youth</p> <p>1.6.8 Promote livestock and poultry development</p>	<p>standards, and other skills development.</p> <p>1.6.1.6 Improve access to agricultural lands for marginalised groups</p> <p>1.6.1.8 Promote investments in modern and affordable irrigation systems for all year-round production</p> <p>1.6.1.9 Promote development of improved crop varieties, pest control, and soil management strategies</p> <p>1.6.1.10 Increase storage facilities for agro-produce including warehouse, silos, cold storage facilities to improve marketing of agriculture produce</p> <p>1.6.2.2 Promote the use of renewable energy (solar and wind) for irrigation.</p> <p>1.6.2.6 Promote development of irrigation facilities</p> <p>1.6.2.13 Implement relevant strategic flagships including Agriculture for</p>	<p>chain in marketing, standards, and other skills development programme</p> <p>2) Programme for infrastructure development in irrigation systems, farm roads and storage facilities.</p> <p>3) Promote sustainable investment in livestock and poultry production programme</p> <p>4) Promote access to affordable credit, farm inputs, implements and farm lands programme</p>

Prioritized Issues	Goals	Objectives	Aligned National Objectives	Strategies	Development Programme
<p>17. Over-reliance on rain-fed agriculture</p> <p>18. Inadequate investments in the agricultural sector</p>				<p>Economic Transformation Agenda (AETA) through the Feed Ghana Programme (FGP).</p> <p>1.6.3.2 Promote secure access to agricultural land by women, youth and migrant farmers</p> <p>1.6.3.3 Train farmers on sustainable agro-ecology and increase access to improved seed and breed varieties</p> <p>1.6.6.3 Facilitate continuous expansion and upgrading of road infrastructure connecting farms to marketing centres.</p>	
<b>Dimension/Thematic Area: Social Development</b>					
<p>1) Poor performance at both BECE and WASSCE Examinations</p> <p>2) Poor supervision of teachers</p> <p>3) Inadequate teaching and learning materials</p> <p>4) Inadequate logistics at GES to ensure effective monitoring of service delivery</p>	<p>Ensure inclusiveness &amp; equitable quality education &amp; promote lifelong learning</p>	<p>To improve quality of teaching and learning environment at all levels by 60% by December, 2029</p> <p>To institute disciplinary measures at all levels of schools to reduce indiscipline among students by 70% by December, 2029</p>	<p>2.6.1 Enhance equitable access to, and participation in quality education at all levels</p> <p>2.6.3 Promote inclusive education</p> <p>2.6.5 Promote e-learning at all levels</p> <p>2.6.6 Strengthen school management systems</p>	<p>2.6.1.1 Accelerate the implementation of Early Childhood Education policy on education (SDG Targets 4.1, 4.2)</p> <p>2.6.1.5 Enhance quality of teaching and learning environment at all levels (SDG Targets 4.1, 4.6, 4.c)</p> <p>2.6.1.7 Expand infrastructure and facilities</p>	<p>1) Rehabilitation and expansion of inclusive school infrastructure Programme</p> <p>2) Programme to enhance inclusive teaching and learning of science, technology, engineering and mathematics</p>

Prioritized Issues	Goals	Objectives	Aligned National Objectives	Strategies	Development Programme
<p>5) Low enrolment at community schools</p> <p>6) Poor condition of some school blocks</p> <p>7) Inadequate School block</p> <p>8) Inadequate furniture for schools</p> <p>9) Inadequate smart libraries</p> <p>10) Inadequate supply of water and sanitation facilities in most public schools</p> <p>11) Indiscipline in both basic and secondary schools among students.</p> <p>12) Low participation of females in learning of science, technology, engineering and mathematics</p> <p>13) Inadequate and inequitable access to education for PWDs and people with special needs at all level</p>			<p>2.6.8. Promote literacy and lifelong learning</p>	<p>at all levels (SDG Target 4.a, 4.c)</p> <p>2.6.1.8 Promote teaching and learning of science, technology, engineering, and mathematics (STEM) and ICT education among girls in basic and secondary education (SDG Target 4.1, 4.b)</p> <p>Expand digital libraries to enhance access to global teaching and learning materials for both teachers and learners</p> <p>2.6.6.3 Strengthen supervision, management, and accountability at all levels of the educational system (SDG Target 16.6)</p> <p>2.6.6.5 Strengthen PTA, School Management Committees (SMC) and Board of Governors (BOG) in public schools (SDG Target 16.6)</p> <p>2.6.8.5 Increase access to school and public library facilities (SDG Target 4.6, 4.a)</p>	<p>especially females to improve quality education at all levels.</p> <p><b>3)</b> Programme to strengthen supervision, school management, discipline and accountability at all levels of the educational system</p>

Prioritized Issues	Goals	Objectives	Aligned National Objectives	Strategies	Development Programme
<p>7. High teenage pregnancy</p> <p>2. Inadequate logistics for the implementation of CHPs</p> <p>3. Some CHOs serving a larger population</p> <p>4. Non – functioning community health committees</p> <p>5. Poor treatment of clients by health workers.</p> <p>6. Inadequate CHPS and Health Centers in the District</p> <p>7. Poor condition of some health facilities</p> <p>8. Inadequate health personnel</p> <p>9. High rate of drugs and substance abuse</p> <p>10. High of level of mental illness</p>	Safeguard healthy lives & improve well-being for all at all ages	<p>To improve access to resilient and inclusive quality health infrastructure and health care delivery including accommodation for health personnel by 40% by December, 2029</p> <p>To devise and implement programmes to reduce indiscipline among nurses, youth and to reduce teenage pregnancy, drugs and substance abuse by 70% by end of December, 2029</p> <p>To form and strengthen existing community health committees to increase their oversight responsibilities for proper functioning of health facilities in the District by 2029.</p>	<p>2.1.2 Improve maternal and adolescent reproductive health</p> <p>2.2.3 Enhance the capacity for effective management of internal migration and border management</p> <p>2.3.1 Ensure equitable, affordable and quality Universal Health Coverage (UHC)</p> <p>2.3.7 Provide adequate health infrastructure and institute functional health logistics</p> <p>2.3.8 Strengthen healthcare and health service delivery management system</p> <p>2.3.9 Enhance capacity for surveillance and management of epidemics and pandemics</p>	<p>2.1.2.1 Strengthen the integration of family planning education in adolescent reproductive healthcare services (SDG Target 3.7, 5.6)</p> <p>2.1.2.2 Improve the quality of adolescent and youth-friendly services across all levels of healthcare facilities (SDGs Target 3.5, 3.7, 3.8)</p> <p>2.1.2.4 Enforce existing laws and implement targeted interventions to end child marriage. (SDG Target 5.3)</p> <p>2.1.2.6 Scale up relevant teenage pregnancy-reduction interventions (SDG Targets 3.7, 5.3)</p> <p>2.3.1.6 Enhance disability-friendliness of health care services</p> <p>2.3.7.1 Upgrade and expand existing health infrastructure and facilities especially for PWDs</p> <p>2.3.9.2 Improve surveillance, monitoring and evaluation of</p>	<p>1) Rehabilitation and expansion of inclusive Health infrastructure Programme</p> <p>2) Enhancement of capacity for surveillance and management of health facilities Programme</p> <p>3) Programme to improve maternal and adolescent reproductive health, reduce the rate of drugs and substance abuse</p>

Prioritized Issues	Goals	Objectives	Aligned National Objectives	Strategies	Development Programme
				epidemics and pandemics (SDGs Target 3.d, 11.5, 11.b, 13.1, 13.3) (AU Target A1 G7 P5 T1)	
High unemployment among the youth especially women	Increase Employment and Decent Work	To reduce unemployment rate by 20% in the District by the end of 2029	2.8.2 Promote job creation and decent work	2.8.2.5 Integrate employment services with social protection programmes to enhance livelihoods and reduce vulnerabilities (SDG 4.4, 8.3, 10.4)	1) Implement social and economic interventions to reduce poverty and income inequalities especially among the vulnerable groups Programme
<p>1) Inadequate opportunities for PWDs to develop and utilise their potential</p> <p>2) Inequitable access to socio-economic incentives for PWDs</p>	Disability-Inclusive Development	<p>To facilitate, incentivize and create socio-economic opportunities for PWDs to develop and utilize their potential in the District by closed of 2029.</p> <p>To create enabling environment for active participation and equal inclusion of PWDs in all dimensions of development in the District by 2029</p>	<p>2.1.1.1 Promote the active participation and equal inclusion of PWDs in all dimensions of social and economic development</p> <p>2.1.1.2 Eliminate discrimination in all forms and protect the rights and entitlements of PWDs</p> <p>2.1.1.4 Strengthen institutions and systems that ensure protection, inclusion, and capacity building of PWDs</p>	<p>2.9.3.3 Implement the CLASS scheme alongside the LEAP cash grant for sustainable income earning opportunities (SDG Targets 8.10, 9.3)</p> <p>2.1.1.2 Promote effective implementation, monitoring and evaluation of the disbursement of 3% District Assemblies Common Fund to PWDs</p> <p>2.1.1.2.1 Facilitate the right of PWDs to access sexual and reproductive healthcare and family planning information and education</p> <p>2.1.1.4.4 Provide targeted support for women with disabilities to promote</p>	<p>2) Programme to improve economic opportunities for PWDs</p> <p>3) Programme to create enabling environment for active participation and equal inclusion of PWDs especially women in socio-economic development</p>

Prioritized Issues	Goals	Objectives	Aligned National Objectives	Strategies	Development Programme
				their welfare and empowerment	
I) Overburdened household chores on women and girls	Child Protection and Development	To facilitate, promote and implement programmes that Prevent and protect children from all forms of violence, abuse, neglect and exploitation in the District by December, 2029	2.12.1 Prevent and protect children from all forms of violence, abuse, neglect and exploitation  2.12.2 Promote the rights and welfare of children	2.12.1.6 Increase awareness on the effects of child labour (SDGs Target 8.7)  2.12.2.1 Implement and enforce comprehensive support mechanisms, including counselling, for victims of domestic violence including child victims (SDGs Target 1.3)  2.12.2.2 Promote public-private partnerships in the provision of alternative care services such as foster and kinship care (SDGs Target 1.b)  2.12.2.3 Promote Public Awareness Campaigns  2.12.2.4 Intensify the implementation of Child Right Conversion  2.12.2.5 Promote positive parenting (SDGs Target 1.b)  2.12.3.7 Facilitate children's participation in development planning processes	Promote child rights, Protection and development programme

Prioritized Issues	Goals	Objectives	Aligned National Objectives	Strategies	Development Programme
				<p>2.12.3.10 Strengthen family tribunal and juvenile courts</p> <p>2.9.3.16 Establish well-resourced and improve existing shelters for all categories of abused persons (SDG Target 11.1)</p> <p>2.12.3.5 Strengthen mainstreaming of child development and protection issues into development plans and budgets of MDAs and MMDAs (SDG Targets 5.c, 16.2)</p> <p>2.12.3.6 Strengthen the Department of Social Welfare and Community Development to implement child related policies and regulations (SDG Targets 16.2, 16.6)</p>	
<p>1) Inadequate logistics for Social Welfare department to deliver their mandate</p> <p>2) High incidence of poverty among vulnerable households and geographic areas</p> <p>3) Inadequate and limited coverage of</p>	<p>Reduce the inequality between the rich and the poor</p>	<p>To empower and promote the social, economic and political inclusion of all irrespective of age, sex, disability, race, ethnicity, origin, religion or economic or other status in the District by end of 2029</p>	<p>2.9.1. Eradicate poverty and inequality in all forms and dimensions</p> <p>2.9.1.1 Enforce complementarity of existing social protection interventions through effective referral systems (SDGs Target 1.3, 1.5, 10.2)</p>	<p>2.9.3.10 Strengthen monitoring and evaluation of social protection for all vulnerable persons (SDG Targets 1.5)</p> <p>2.9.3.2 Implement viable and sustainable economic livelihood schemes for vulnerable people (SDG Targets 1.4, 2.3, 14.b).</p>	<p>implement interventions reduce poverty and eradicate inequalities among vulnerable people programme</p> <p>Programme to strengthen monitoring and evaluation of social protection interventions.</p>

Prioritized Issues	Goals	Objectives	Aligned National Objectives	Strategies	Development Programme
social protection programmes for vulnerable groups		To improve social services delivery by 70% through provision of adequate resources needed by the SWCD by December, 2029	2.9.2. Reduce disparities in poverty within and across socioeconomic groups and geographical areas  2.9.3 Strengthen social protection for the vulnerable	2.9.3.13 Institute public sensitisation involving traditional authorities, against stigma, abuse, discrimination, and harassment of vulnerable people (SDG Targets 16.2, 16.3)	
1) Low participation of women in local level elections 2) Weak prioritization of gender issues leading to low budget allocation for gender and gender related development issues	Achieve gender equality and empower all women and girls gap	To prioritize and embark on programmes and measures to give women equal rights to economic resources, as well as access to ownership and control over land and other forms of property, financial services, inheritance and natural resources, in accordance with national laws by at the end of 2029.	Promote economic empowerment of women  2.10.3 Strengthen mainstreaming, coordination and implementation of gender related interventions in all sectors	2.10.3.7 Integrate gender equality measures in the medium-term budget framework and processes.  2.10.2.3 Improve access to education, health, and skills training in income generating activities for vulnerable women (SDG Targets 3.8, 4.5)	Programme to promote women participation in local governance systems  programme to reduce gender inequalities in access to education, health, and skills training in income generating activities for vulnerable women
1) Inadequate potable water supply/water rationing 2) Broken down/uncompleted water systems in communities 3) Poor management of water systems due to	Ensure availability and sustainability management of water and sanitation	To increase access to sustain adequate and potable water supply to all by 90% by December, 2029  To improve access to adequate and equitable sanitation and hygiene for all by 80% and end open	2.5.1 Improve access to safe, reliable and sustainable water supply services for all  2.5.2 Enhance access to improved and sustainable environmental sanitation services	2.5.1.1 Accelerate the implementation of the Water for All Programme (SDG Target 6.1)  2.5.1.4 Ensure routine maintenance of water infrastructure  2.5.1.5 Ensure the provision of disability	Programme to expand and rehabilitate inclusive drainage system, water and sanitation facilities.  Scale-up sensitisation campaigns to promote proper sanitation management, handwashing and hygiene practices

Prioritized Issues	Goals	Objectives	Aligned National Objectives	Strategies	Development Programme
<p>absence of WATSANs</p> <p>4) Inadequate sanitation facilities especially in some basic and secondary schools</p> <p>5) Inadequate refuse collection containers</p> <p>6) Poor drainage systems in the communities</p> <p>7) Lack of engineered land field site for the District</p> <p>8) Open defecation</p>		defecation, paying special attention to the needs of women and girls and those in vulnerable situations by end of 2029	<p>2.5.3 Promote efficient and sustainable waste management</p> <p>2.10.3 Strengthen mainstreaming, coordination and implementation of gender related interventions in all sectors</p> <p>2.12.3 Improve and strengthen the policy and legal environment, institutions and systems for child and family welfare</p> <p>2.14.1 Enhance the wellbeing and inclusion of the aged in national development</p>	<p>friendly water supply system (SDGs Target 6.1, Target 6.1)</p> <p>2.5.1.6 Develop and implement District Water and Sanitation Plans (DWSPs) (SDG Targets 6.1, 16.6)</p> <p>2.5.2.1 Promote District Led Total Sanitation Campaign (SDG Target 6.2)</p> <p>2.5.2.2 Modernize landfill infrastructure</p> <p>2.5.2.3 Expand access to waste bins</p> <p>2.5.2.6 Scale-up sensitisation campaigns to promote proper handwashing and hygiene practices particularly among children (SDGs Target 6.2)</p> <p>2.5.2.7 Develop innovative financing mechanisms and scale up private sector participation and investments in sanitation and waste management (SDG Targets 6.2, 17.3, 17.5)</p>	particularly among children programme

Prioritized Issues	Goals	Objectives	Aligned National Objectives	Strategies	Development Programme
				<p>2.5.2.8 Strengthen institutional coordination and harmonisation in sanitation and waste management and hygiene services delivery</p> <p>2.5.2.12 Enforce building regulation (including accessibility standards for PWDs) on the provision of toilet facilities in household and institutional facilities</p> <p>2.5.3.2 Improve liquid waste management (SDG Targets 6.3, 6.a, 6.b)</p> <p>2.5.3.3 Attract private sector investment in wastewater management (SDG Target 17.17)</p>	
<b>Dimension/Thematic Area: Environment, Infrastructure and Human Settlements</b>					
<p>1) Poor condition of urban and feeder roads</p> <p>2) Lack of proper drains along the roads at built-up areas causing rapid deterioration of roads in communities</p> <p>3) Lack of access roads within the major towns and the new settlements and between settlements</p>	<p>Build resilient infrastructure, promote inclusive and sustainable industrialization and foster innovation</p>	<p>To develop quality, reliable, sustainable and resilient infrastructure to support economic development and human well-being, with a focus on affordable and equitable access for all by 80% by end of 2029</p> <p>To improve road safety, notably by expanding public transport, road signs and speed humps</p>	<p>3.8.1 Improve efficiency and effectiveness of road transport infrastructure and services</p> <p>3.8.2 Enhance safety and security for all categories of road users</p>	<p>3.8.1.1 Expand and maintain road transport infrastructure (SDG Target 9.1, 11.2) (AU Target A2 G10 PI TI &amp; 2)</p> <p>3.8.2.1 Strengthen health and safety standards in planning, design, construction, operations and maintenance for road transport (SDG Target 9.1, 11.2) (AU Target A2 G10 PI TI &amp; 2)</p>	<p>Programme to expand, maintain and develop roads and drainage infrastructure system for socio-economic development</p>

Prioritized Issues	Goals	Objectives	Aligned National Objectives	Strategies	Development Programme
4) Limited speed bumps on High Ways roads leading to over speeding and accidents		with special attention to the needs of those in vulnerable situations, women, children, persons with disabilities and older persons by end of December, 2029		3.8.2.9 Step up public education for all categories of road users	
1) Poor maintenance culture 2) High cost of maintenance 3) Limited financing for maintenance	Enhance road Infrastructure Maintenance	To improve the long span of road infrastructure to about 70% through routine maintenance in the District by December, 2029	3.16.1 Promote effective maintenance culture	3.8.1.6 Enhance maintenance and management practices for all road sectors (SDG Target 9.1, 11.2) (AU Target A2 GI0 PI T1 & 2)	Maintenance of infrastructure programme
1) Difficulty in zoning due to family ownership of land as each family prefer the highest and best use of the parcels 2) Access to land for communal use is difficult 3) Difficulties in implementing local development plans as a result of poor cooperation of residents 4) Lack of District Spatial Development Framework, Structural Plans and limited number of Local Plan making of	Improve Human Settlements and Land Administration	To enhance collaboration between land owners and Assembly to ensure proper zoning and permitting process for development projects in the District by the end of 2029  To Accelerate the preparation, revision and implementation of Spatial Plans to reduce by 60% non-conformity of building codes and standards at all levels by December, 2029  To provide access to safe, inclusive and accessible, green and public spaces, particularly	3.12.1 Promote sustainable spatially integrated development of human settlements 3.17.1 Promote efficient and effective land administration	3.12.1.2 Accelerate the preparation, revision and implementation of Spatial Plans (SDG Targets 11.3, 11.7, 11.a) (AU Target A1 GI P4 T1)  3.12.1.3 Intensify the use of Geographic Information System (GIS) in spatial/land use planning at all levels (SDG Targets 11.a, 11.b) (AU Target A1 GI P4 T1)  3.12.1.8 Intensify street naming and property addressing system.  3.17.1.12 Promote proper demarcation of land boundaries	Programme to improve and sustain spatially integrated development of human settlements and efficient and effective land administration

Prioritized Issues	Goals	Objectives	Aligned National Objectives	Strategies	Development Programme
the entire District difficult		for women and children, older persons and persons with disabilities by end of 2029		Ensure provision of green and public spaces, particularly for women and children, older persons and persons with disabilities for good living life	
<ol style="list-style-type: none"> <li>1) Weak response to disaster issues</li> <li>2) Frequent flooding incidents</li> <li>3) Lack of emergency equipment and materials to respond to disaster victims.</li> <li>4) Inadequate knowledge on disasters</li> <li>5) Poor early warning systems</li> <li>6) Poor coordination among key institutions on disaster management and response</li> <li>7) Inadequate infrastructure for emergency response</li> <li>8) Weak social protection system for victims of disasters</li> </ol>	Make communities and human settlements inclusive, safe, resilient and sustainable	To significantly reduce the number of affected people and decrease by 70% the economic losses caused by disasters, including water-related disasters, with the focus on protecting the poor and people in vulnerable situations.	3.18.1 Improve national resilience to hydrological threats	<p>3.18.1.1 Strengthen early warning and response mechanisms for disasters (SDGs Target 3.d, 13.3) (AU Target A1 G7 P5 T1)</p> <p>3.18.1.2 Improve enforcement and compliance of disaster risk reduction (DRR) laws (SDGs Target 11.5, 11.b) (AU Target A1 G7 P5 T1)</p> <p>3.18.1.3 Promote awareness on disaster risk reduction (SDGs Target 11.5) (AU Target A1 G7 P5 T1)</p> <p>3.18.1.4 Develop and implement disaster prevention and mitigation plans (SDGs Target 11.5) (AU Target A1 G7 P5 T1) (SDGs Target 11.5, 11.b) (AU Target A1 G7 P5 T1)</p> <p>3.18.1.9 Ensure inclusive and gender responsive approaches to disaster</p>	Disaster prevention, management and mitigation Programme

Prioritized Issues	Goals	Objectives	Aligned National Objectives	Strategies	Development Programme
				<p>risk management (SDGs Target 11.5, 11.b) (AU Target AI G7 P5 T1)</p> <p>3.18.1.11 Ensure adherence to zoning policies and building regulation (SDGs Target 11.5, 11.b) (AU Target AI G7 P5 T1)</p>	
<p>1) Tree harvesting (illegal felling of mangrove for firewood)</p> <p>2) Bush fires</p>	<p>Protect, Restore and promote sustainable use of Terrestrial Ecosystems, sustainably manage forests, combat desertification, halt and reverse land degradation and biodiversity loss</p>	<p>To promote the implementation of sustainable management of mangroves, halt deforestation, restore degraded mangroves, and increase afforestation and reforestation by 60% by December, 2029</p> <p>To significant reduce degradation of natural habitat, halt the loss of biodiversity, and by 2029 protect and prevent the extinction of threatened species (Sitatunga)</p>	<p>3.1.1 Safeguard forest and protected areas</p> <p>3.5.1 Reduce Environmental Pollution</p> <p>3.6.1 Combat deforestation, desertification and soil erosion</p>	<p>3.1.1.4 Strengthen environmental governance including enforcement of relevant legislations to protect and maintain the integrity of forest, wetlands and biodiversity hotspots (SDG Targets 16.6, 16.b) (AU Target AI G7 PI T1-6)</p> <p>3.1.1.5 Map and assign conservation status through bye-laws to mangrove forests, wetlands and sensitive marine areas (SDG Target 14.1, 14.2, 14.3, 14.5, 15.9) (AU Target AI G7 PI T2)</p> <p>3.1.1.8 Strengthen involvement of local communities in the management of forests and wetlands through mechanisms such as co-management systems (e.g.,</p>	<p>Conservation and management of environment Programme</p>

Prioritized Issues	Goals	Objectives	Aligned National Objectives	Strategies	Development Programme
				<p>CREMAs and Community Forest Areas) SDG Targets 6.a, 6b 6.6, 11.4, 12.2, 15.1, 15.2, 15.5, 15.9, 15. a, 16.b) (AU Target AI G7 PI P2 T1 T2)</p> <p>3.5.1.9 Intensify public education on indiscriminate disposal of waste (SDG Target 11.6) (SDG Targets 3.9, 6.3, 16.b) (AU Target AI G7 P3 T1)</p>	
<p>1) Illegal sand mining activities</p> <p>2) Pollution of water resources</p> <p>3) Poor agricultural practices which affect water quality</p>	Ensure proper Water Resources Management	To reduce the level of Environmental Pollution, bush fires and illegal sand mining activities by 60% by the end of 2029	3.3.1 Promote sustainable water resources development and management	<p>3.3.1.3 Promote efficient water use (SDG Targets 6.4, 6.5, 6.a) (AU Target AI G7 P4 T2)</p> <p>3.6.1.6 Enforce regulations to combat illegal sand mining (SDG Targets 15.2, 15.3.) (AU Target AI G7 P2 T2)</p> <p>3.5.1.1 Intensify enforcement of regulations and standards on air, soil and noise pollution including open burning (SDG Targets 11.6, 16. b) (AU Target AI G7 P3 T1)</p>	Protection and management of water bodies programme
1) Negative impact of climate variability and change	Initiate Actions to Combat Climate Change	To increase education, awareness raising and human and institutional	3.7.1 Enhance institutional capacity and coordination for	3.7.1.7 Implement land restoration initiatives, climate adaptation	Capacity building on climate change and green

Prioritized Issues	Goals	Objectives	Aligned National Objectives	Strategies	Development Programme
<p>2) Weak institutional coordination mechanism for climate action</p> <p>3) Low institutional capacity to address climate change and variability issues</p>	and its Impacts	<p>capacity on climate change mitigation, adaptation, impact reduction, and early warning in the District by the end of 2029</p> <p>To promote mechanisms for raising capacities for effective climate change related planning and management, in the District, including focusing on women, youth, local and marginalized communities by end of 2029</p>	<p>effective climate action</p> <p>3.7.2 Enhance climate change resilience</p>	strategies, and conservation policies to promote indigenous crops, livestock breeds, and agro-biodiversity.	economy related issue Programme.
<b>Dimension/Thematic Area: Governance, Corruption and Public Accountability</b>					
<p>1) Inadequate office space and accommodation facilities for staff of the Assembly</p> <p>2) Inadequate Office Accommodation for the police, Fire service and Ambulance department</p> <p>3) Inadequate logistics such as laptops, printers, office furniture etc. for decentralized departments to function well</p>	Deepening Democratic Governance	<p>To increase access to improved office space, accommodation for staff of all departments by 20% for improved service delivery in the District by the end of 2029</p> <p>To increase access to office materials and equipment for improved service delivery by 90% by the end of 2029</p> <p>To improve the capacities of all departmental staff and Assembly members on plan preparation, implementation</p>	<p>4.1.1 Strengthen democratic governance</p> <p>4.2.1 Deepen political and administrative decentralization</p> <p>4.7.1 Promote cultural heritage for national development</p>	<p>4.1.1.9 Intensify civic education and democratic literacy at all levels with a focus on youth, marginalized groups, and first-time voters</p> <p>4.2.1.2 Enhance the capacity and effectiveness of assembly members and staff at the local level</p> <p>4.2.1.3 Resolve discrepancies in inter-District boundary demarcation</p> <p>4.3.1.1 Strengthen systems and structures for</p>	<p>Capacity building of staff and other key stakeholders for improve service delivery programme</p> <p>Programme to strengthen local governance, transparency and accountability</p>

<b>Prioritized Issues</b>	<b>Goals</b>	<b>Objectives</b>	<b>Aligned National Objectives</b>	<b>Strategies</b>	<b>Development Programme</b>
4) Inadequate capacity for plan preparation, implementation, monitoring and evaluation by departments		monitoring and evaluation to track and assess the impact of development programmes on the citizenry in the District by 2029		ensuring transparency and accountability in the management of public funds	
1) Underperformance of District development plan and budget due to low or non-releases/delay releases of statutory funds by central government to execute planned development projects 2) Low Internally Generated Funds (IGF)	Improve Local Governance and Decentralization  Build effective, accountable and inclusive institutions at all levels.	To develop effective, accountable and transparent institutions at all levels by end of 2029  To improve revenue mobilization both internal and external sources by 40% by December, 2029	4.2.3 Strengthen fiscal decentralization 4.3.1 Deepen transparency and public accountability	4.2.1.4 Revamp and adequately resource sub-District structures (Town, Area, and Unit Committees) to perform statutory functions effectively. 4.2.1.9 Improve efficiency in service delivery  4.2.3.2 Enhance revenue mobilisation capacity of MMDAs  4.3.1.7 Expand access to public information and initiatives that promote accountability	Mobilization of both internal and external human, materials and financial resources programme  Programme to enhance transparent and accountable governance system
1) Low participation of people in local governance system	Ensure responsive, inclusive, participatory and representative decision making at all levels	To improve citizens active participation in local governance system including, planning process and transparency and public accountability in the District by 2029	4.6.1 Promote civic and civil society engagement in development	4.2.1.5 Institute mechanism for effective inter-service/inter-sectoral collaboration and cooperation at District, regional and national levels  4.3.1.8 Boost public interest and participation in governance	Programme to Promote citizens active participation in local governance system including, planning process and transparency and public accountability

Prioritized Issues	Goals	Objectives	Aligned National Objectives	Strategies	Development Programme
				<p>4.1.1.11 Promote affirmative action policies and legal reforms to enhance representation of women, youth, and persons with disabilities in governance structures</p> <p>4.2.1.8 Strengthen the People's Assembly concept to encourage citizens to participate in governance</p> <p>4.3.1.9 Enhance participatory budgeting, revenue, and expenditure tracking at all levels</p> <p>4.3.1.10 Strengthen feedback mechanisms in public service delivery to capture citizen inputs</p> <p>4.6.1.2 Increase civic participation among traditional authorities and youth</p> <p>4.7.1.3 Foster active youth participation in cultural activities</p> <p>4.7.1.5 Enhance resource allocation for cultural programmes and cultural heritage</p> <p>4.7.1.8 Create awareness of the importance of</p>	

Prioritized Issues	Goals	Objectives	Aligned National Objectives	Strategies	Development Programme
				culture for development among the general public 4.7.1.10 Mainstream and implement culture related activities in the MTDPs.	
<ul style="list-style-type: none"> <li>1) Inadequate streetlights</li> <li>2) Rampant burglary issues in the District</li> </ul>	Promote peaceful and inclusive societies for sustainable development,	<p>To improve peace and order for sustain economic growth in the District by December, 2029</p> <p>To reduce burglary and other crimes levels by 50% by December, 2029</p>	4.8.1 Enhance public safety and security	4.8.1.2 Intensify public education campaigns on safety and crime prevention	Programme to improve citizens safety and security for socio-economic development
<ul style="list-style-type: none"> <li>1) Weak collaboration among decentralized departments in the design and implementation of government programmes and projects</li> <li>2) Low demand and utilization of M&amp;E results</li> <li>3) Weak reporting and unreliable M&amp;E data</li> <li>4) Poor record keeping and documentation</li> <li>5) Weak institutional memory in the Assembly</li> </ul>	Enhance Implementation, Coordination, Monitoring and Evaluation systems in the District	<p>To improve collaboration and the capacities of all departmental staff on plan preparation, implementation monitoring and evaluation to track and assess the impact of development programmes on the citizenry in the District by 2029</p> <p>To Strengthen feedback mechanisms in public service delivery to increase demand and utilization of M&amp;E results and to capture citizen inputs by December, 2029</p> <p>To improve Assembly records keeping system and institutional memory</p>	4.2.2 Improve decentralised planning	4.2.2.2 Promote inclusive and participatory planning processes implementation, monitoring and evaluation that integrate local economic development (LED) opportunities	Capacity building on data collection and analysis, monitoring and evaluation collaboration among stake institution in service delivery programme

<b>Prioritized Issues</b>	<b>Goals</b>	<b>Objectives</b>	<b>Aligned National Objectives</b>	<b>Strategies</b>	<b>Development Programme</b>
6) Inadequate data and information storage systems		of the Assembly through establishment of data and information storage systems by December, 2029			
<b>International Relations</b>					
1) Limited Diaspora engagement and participation in District development	Regional And Global Relations	Enhance Ghana's international image and influence	Enhance Ghana's international image and influence	Ensure participation of Ghanaians abroad in national development (SDG Target 16.7; ECOWAS Protocol Art. 23)	Promote implementation of interventions to attract diaspora participation and investment programme.

### 4.3 Goal Compatibility Matrix

The specific goals formulated by the Assembly were subjected to goal compatibility analysis with aim to evaluate and compare the compatibility or consistency of the goals against each other to avoid conflicts. The table 4.2 below presents the Goal Compatibility Matrix.

*Table 4.2: Goal Compatibility Matrix*

GOALS	Promote sustained and inclusive Macro-Economy growth	2. Promote sustained, inclusive and sustainable economic growth, with productive employment and decent work for all	3.0 Promote sustained, inclusive and sustainable Tourism development to create employment and decent work for all	4.0 Ensure food and income security	5 Ensure inclusiveness & equitable quality education & promote lifelong learning	6.0 Safeguard healthy lives & improve well-being for all at all ages	7.0 Increase Employment and Decent	8.0 Disability-Inclusive Development	9.0 Child Protection and Development	Reduce the inequality between the rich and the poor	11. Achieve gender equality and empower all women and girls	Ensure availability and sustainability management of water and sanitation	Build resilient infrastructure, promote inclusive and sustainable industrialization and foster innovation	Enhance Infrastructure Maintenance	Improve Human Settlements and Land Administration	Make communities and human settlements	Protect, Restore and promote sustainable use of Terrestrial Ecosystems. sustainably manage	18 Ensure proper Water Resources Management	Initiate Actions to Combat Climate Change and its Impacts	20. Deepening Democratic Governance	21 Build effective, accountable and inclusive institutions at all levels	23. Civil Society and Civic Engagement	Promote peaceful and inclusive societies for sustainable development;	25 Enhance Implementation, Coordination, Monitoring and Evaluation systems in the District	Regional And Global Relations
1 Promote sustained and inclusive Macro-Economy growth	H	H	H	H	H	H	M	M	M	M	M	H	M	M	M	M	L	L	M	M	M	M	M	H	
2.0 Promote sustained, inclusive and sustainable economic growth, with productive employment and decent work for all		H	H	H	H	H	M	M	M	M	L	H	M	M	L	M	L	L	H	M	M	M	M	H	
3.0 Promote sustained, inclusive and sustainable Tourism development to create employment and decent work for all			M	M	M	H	M	M	M	M	M	H	M	M	M	H	M	M	M	M	M	H	M	H	
4.0 Ensure food and income security				H	H	H	M	M	M	H	M	H	H	M	M	L	L	H	M	M	M	M	M	H	
5.0 Ensure inclusiveness & equitable quality education & promote lifelong learning					M	H	H	H	H	H	M	H	H	H	M	M	M	M	H	M	M	M	M	H	
6.0 Safeguard healthy lives & improve well-being for all at all ages						H	M	M	M	M	H	H	H	M	M	M	M	M	M	M	M	M	M	H	

GOALS	Promote sustained and inclusive Macro-Economy growth	2. Promote sustained, inclusive and sustainable economic growth, with	3.0 Promote sustained, inclusive and sustainable Tourism development to create employment and decent work for all	4.0 Ensure food and income security	5 Ensure inclusiveness & equitable quality education & promote lifelong	Safeguard healthy lives & improve well-being for all at all ages	7.0 Increase Employment and Decent	8.0 Disability-Inclusive Development	9.0 Child Protection and Development	Reduce the inequality between the rich and the poor	11. Achieve gender equality and empower all women and girls gap	Ensure availability and sustainability management of water and sanitation	Build resilient infrastructure, promote inclusive and sustainable industrialization and foster innovation	Enhance Infrastructure Maintenance	Improve Human Settlements and Land Administration	Make communities and human settlements	Protect, Restore and promote sustainable use of Terrestrial Ecosystems. sustainably manage	18 Ensure proper Water Resources Management	Initiate Actions to Combat Climate Change and its Impacts	20. Deepening Democratic Governance	21 Build effective, accountable and inclusive institutions at all levels	23. Civil Society and Civic Engagement	Promote peaceful and inclusive societies for sustainable development;	25 Enhance Implementation, Coordination, Monitoring and Evaluation systems in the District	Regional And Global Relations
7.0 Increase Employment and Decent Work							H	M	H	M	M	H	H	M	H	M	M	M	M	M	M	H	M	M	
8.0 Disability-Inclusive Development								M	H	M	M	M	M	M	M	M	M	M	M	M	M	M	M	M	
9.0 Child Protection and Development									M	M	M	M	M	M	M	M	M	M	M	M	M	M	M	M	
10. Reduce the inequality between the rich and the poor										M	M	M	M	M	M	M	M	M	M	M	M	M	M	M	
11. Achieve gender equality and empower all women and girls gap											M	M	M	M	M	M	M	M	M	M	M	M	M	M	
12. Ensure availability and sustainability management of water and sanitation												H	H	H	H	M	H	M	M	M	M	H	H	M	
13. Build resilient infrastructure, promote inclusive and sustainable industrialization and foster innovation														H	H	H	M	M	M	M	H	M	H	M	
14 Enhance Infrastructure Maintenance															M	M	M	M	M	M	H	M	H	M	

GOALS	Promote sustained and inclusive Macro-Economy growth	2. Promote sustained, inclusive and sustainable economic growth, with	3.0 Promote sustained, inclusive and sustainable Tourism development to create employment and decent work for all	4.0 Ensure food and income security	5 Ensure inclusiveness & equitable quality education & promote lifelong	Safeguard healthy lives & improve well-being for all at all ages	7.0 Increase Employment and Decent	8.0 Disability-Inclusive Development	9.0 Child Protection and Development	Reduce the inequality between the rich and the poor	11. Achieve gender equality and empower all women and girls	Ensure availability and sustainability management of water and sanitation	Build resilient infrastructure, promote inclusive and sustainable industrialization and foster innovation	Enhance Infrastructure Maintenance	Improve Human Settlements and Land Administration	Make communities and human settlements	Protect, Restore and promote sustainable use of Terrestrial Ecosystems. sustainably manage	18 Ensure proper Water Resources Management	Initiate Actions to Combat Climate Change and its Impacts	20. Deepening Democratic Governance	21 Build effective, accountable and inclusive institutions at all levels	23. Civil Society and Civic Engagement	Promote peaceful and inclusive societies for sustainable development;	25 Enhance Implementation, Coordination, Monitoring and Evaluation systems in the District	Regional And Global Relations
15. Improve Human Settlements and Land Administration															H	H	M	M	M	M	M	H	M	M	
16. Make communities and human settlements inclusive, safe,															H	H	M	H	M	M	M	H	M	M	
17. Protect, Restore and promote sustainable use of Terrestrial Ecosystems, sustainably manage forests, combat desertification, halt and reverse land degradation and biodiversity loss																	H	M	M	M	M	M	M	M	
18 Ensure proper Water Resources Management																		M	M	M	M	M	M	M	
19 Initiate Actions to Combat Climate Change and its Impacts																			M	M	M	M	M	M	
20. Deepening Democratic Governance																				H	H	H	H	M	

GOALS	Promote sustained and inclusive Macro-Economy growth	2. Promote sustained, inclusive and sustainable economic growth, with	3.0 Promote sustained, inclusive and sustainable Tourism development to create employment and decent work for all	4.0 Ensure food and income security	5 Ensure inclusiveness & equitable quality education & promote lifelong	Safeguard healthy lives & improve well-being for all at all ages	7.0 Increase Employment and Decent	8.0 Disability-Inclusive Development	9.0 Child Protection and Development	Reduce the inequality between the rich and the poor	11. Achieve gender equality and empower all women and girls	Ensure availability and sustainability management of water and sanitation	Build resilient infrastructure, promote inclusive and sustainable industrialization and foster innovation	Enhance Infrastructure Maintenance	Improve Human Settlements and Land Administration	Make communities and human settlements	Protect, Restore and promote sustainable use of Terrestrial Ecosystems sustainably manage	18 Ensure proper Water Resources Management	Initiate Actions to Combat Climate Change and its Impacts	20. Deepening Democratic Governance	21 Build effective, accountable and inclusive institutions at all levels	23. Civil Society and Civic Engagement	Promote peaceful and inclusive societies for sustainable development;	25 Enhance Implementation, Coordination, Monitoring and Evaluation systems in the District	Regional And Global Relations
21. Improve Local Governance and Decentralization																					H	H	H	H	M
22. Build effective, accountable and inclusive institutions at all levels.																						H	H	H	M
23. Ensure responsive, inclusive, participatory and representative decision making at all levels																						H	H	M	M
24. Promote peaceful and inclusive societies for sustainable development																								M	M
25 Enhance Implementation, Coordination, Monitoring and Evaluation systems in the District																									M
26 Regional And Global Relations																									

**Key**

**(H): High Compatibility; (M): Medium Compatibility; (L) Low Compatibility**

Planning as connotes, is to allocate resources, which for most parts are usually scarce for maximum use. However, in order to achieve synergy and most importantly to improve efficiency and effectiveness in the allocation of scarce resources, appropriate analytical tools need to be used to ensure consistency and for that matter value for money. The Goal Compatibility matrix above formed the analytical tool upon which the formulated goals of the District were rated by evaluating the goals against each other to indicate the level of consistency or compatibility. Where the goal compatibility are low, mitigation measures will be employed to address the negative implications. Again, the underpinning programmes/activities of the mitigations measures will be formulated and incorporated in the Programme Development so they can be mainstreamed into the plan implementation.

#### 4.4 Integration of Spatial Plans with development proposals of South Tongu District

Spatial Development Framework Development Framework (SDF) covers the entire South Tongu District. The Spatial Development Framework sets a vision for the spatial growth and development of our District over the next two decades. Our vision is to create a vibrant, sustainable, and equitable District that offers improvement in Agriculture as the main priority while accepting the level of urbanization that is going on. Thus, there is also a need to respond positively to further urban and industrial development, but with an equally strong emphasis on developing a 'hi-tech' eco-tourism and 'green' economy and environment. The SDF is expected to reflect spatial dimensions of the District development proposals in this MTDPs. Besides, the SDF will aid developers, investors, government, civil societies, utility agencies, and all citizens in creating a sustainable environment necessary to propel economic growth in the District.

The proposed SDF provides a spatial plan for regularizing existing areas of 'urban sprawl' and preventing further expansion by applying urban edge growth management tools. The proposed SDF also reflects a gradual expansion of three key settlements namely Sogakope Urban, Dabala, and Tefle. It is expected that, these settlements that are strategically sited would become key urban service centers to serve the rest of the settlements in the District. This will require new planned, properly serviced settlements to be developed around the old settlements with individuals, private companies, landowners, government agencies, utility companies, and others.

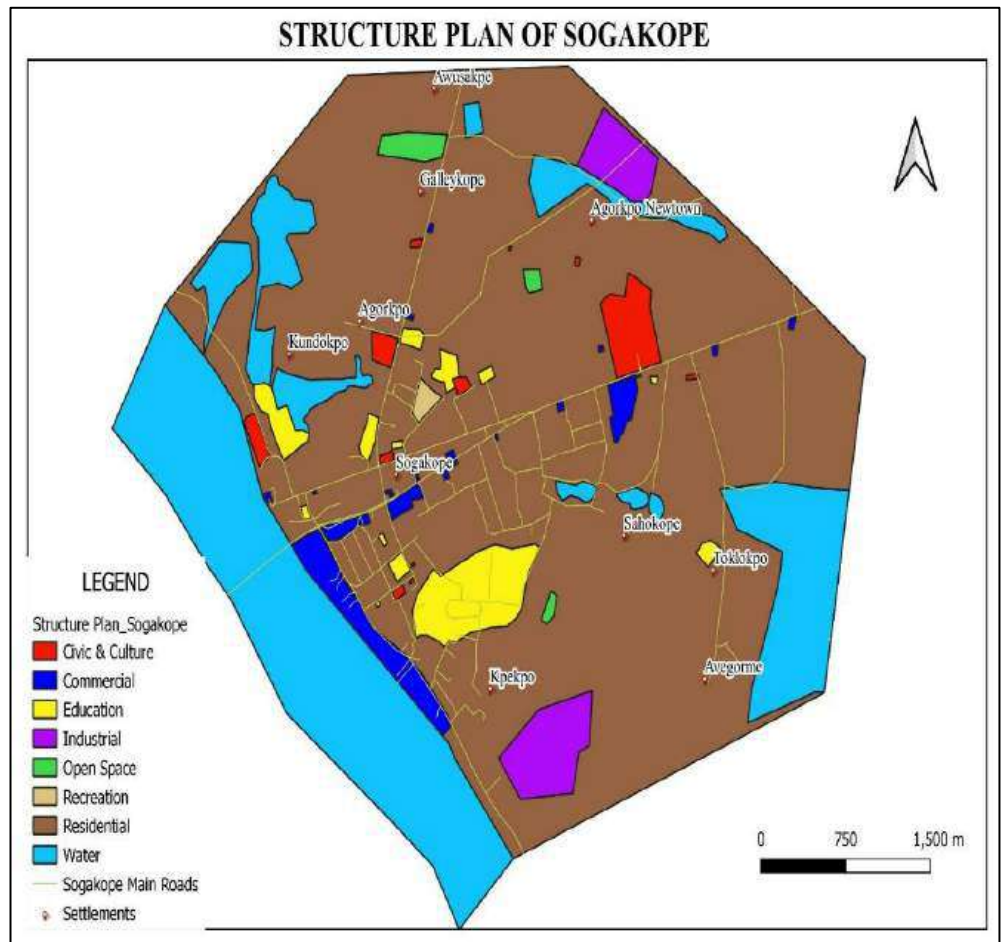
The development and protection of Agriculture remain the priority for the proposed SDF, which designates zones to protect especially rice valleys (marshlands) and further investment. The Feed Ghana programme should be intensified to introduce farmers to new technology and irrigation farming.

As part of the spatial strategy to propel economic growth in the District, the Avu Lagoon Eco-Tourism, Lower Volta Bridge, and Boat Cruising in the District require investment. It is expected that this intervention would make tourism in the District very attractive thereby creating sustainable employment. On transport, the construction of ECOWAS Highway road will invariably double traffic congestion in the CBD hence, there is the need to highlight these in the District Structure Plan for consideration. Investment should be channeled towards the following feeder roads and should be given priority in terms of surface improvement: Gladisco Junction-Agbeve-Kua Feeder Road, Agbadzakope-Dikato Feeder Road, Lolito Junction-Amedorme-Galosota Feeder Road. For easier service provision and improvement in local

economic activities, investment should be channeled to developing all town roads in Sogakope with bitumen or asphalt.

Sogakope and Dabala being the main commercial hub of the District will require adequate investment in the following areas: pedestrian walkways along key roads, development of drains, transport terminal, urban parks (for social events and relaxation), and market among others.

Based on the vision of the District as contained in the Medium Term Development, and also the national goals as well as the Sustainable Development Goals, the SDF focused on the Vision of Agriculture the main priority, while accepting the level of urbanization that is going on. Besides, there is also a need to respond positively to further urban and industrial development, but with an equally strong emphasis on developing a 'hi-tech' and 'green' economy and environment. Figure 4.1 Structure Plan of Sogakope



## CHAPTER FIVE

### COMPOSITE DEVELOPMENT PROGRAMMES

#### 5.1: Introduction

The Composite Development Programmes expresses the aspirations, harmonized goals, objectives and strategies; into concrete Programmes and budgeted with set timelines towards the achievement of the development goals of the 2026 -2029. Goals and Programs disaggregate the Composite Development Programmes covering the four-year planning period. The Composite Development Programmes consists of formulated set of programmes for the achievement of the goals, objectives and strategies as well as time-schedule, cost and implementing agencies.

This information is also relevant for monitoring and evaluation purposes.

The Development Programmes were formulated by DPCU taking into consideration the goal, objectives, strategies, prioritize needs from communities and issues from the profile analysis of the District which included socio-economic and vulnerability analysis. It continue with Programmes Financing for the plan period and Integrated Assembly Financing Framework (IAFF). The chapter conclude with programmes/projects to be implemented were subjected to Strategic Environmental Assessment (SEA) to assess their effects on the environment as well as measures to mitigate these effects, where they exist.

#### 5.2 Formulation of Development programmes

In the attainment of its Development Goal, the Assembly has opted for an integrated development approach for the 2026-2029 planning period consisting of Twenty-Six (26) Development Focus Areas under Five Development Dimensions in accordance with the National Medium Term Development Policy Frame Work (2026-2029) “**Resetting-Ghana Agenda: Creating Jobs, Ensuring Accountability, and Promoting Shared Prosperity**” as presented in table 5.1 below:

The development programmes were formulated taken into consideration the Five (5) development dimensions with their focus areas. The economic development dimension over the medium term is to build a prosperous society. The focus areas opted for by the Assembly to achieve overall goal of the District under this dimension include:

- Promote sustained and inclusive Macro-Economy growth,
- Promote sustained, inclusive and sustainable economic growth, with productive employment and decent work for all,
- Promote sustained, inclusive and sustainable Tourism development to create employment and decent work for all, and to
- Ensure food and income security.

The formulated development programmes for implementation to achieve the set goal in the District entails:

1. Capacity building for revenue staff Programme
2. Sustainable resource mobilization programme
3. Programme for enhancement of market infrastructure
4. Promote access to affordable credit facilities especially women programme
5. Programme for capacity building of entrepreneurs and MSME

6. Expansion of roads and other infrastructure under tourism sector programme
7. Programme for sustainable tourism and Creative Arts promotion
8. Capacity building of farmer-based organizations and other actors along the value chain in marketing, standards, and other skills development programme
9. Programme for infrastructure development in irrigation systems, farm roads and storage facilities.
10. Promote sustainable investment in livestock and poultry production programme
11. Promote access to affordable credit, farm inputs, implements and farm lands programme

The overall goal of the social development strategies, over the medium term is to create opportunities for all Ghanaians. The focus areas to achieve the overall goal in the District entails:

The developed programmes for implementation to achieve the set goals under this development dimension in the District will entail:

1. Rehabilitation and expansion of inclusive school infrastructure Programme
2. Programme to enhance inclusive teaching and learning of science, technology, engineering and mathematics especially females to improve quality education at all levels.
3. Programme to strengthen supervision, school management, discipline and accountability at all levels of the educational system
4. Rehabilitation and expansion of inclusive Health infrastructure Programme
5. Enhancement of capacity for surveillance and management of health facilities Programme
6. Programme to improve maternal and adolescent reproductive health, reduce the rate of drugs and substance abuse
7. Implement social and economic interventions to reduce poverty and income inequalities especially among the vulnerable groups Programme
8. Programme to improve economic opportunities for PWDs
9. Programme to create enabling environment for active participation and equal inclusion of PWDs especially women in socio-economic development
10. Promote child rights, Protection and development programme
11. Implement interventions reduce poverty and eradicate inequalities among vulnerable people programme
12. Programme to strengthen monitoring and evaluation of social protection interventions.
13. Programme to promote women participation in local governance systems
14. Programme to reduce gender inequalities in access to education, health, and skills training in income generating activities for vulnerable women
15. Programme to expand and rehabilitate inclusive drainage system, water and sanitation facilities.
16. Scale-up sensitisation campaigns to promote proper sanitation management, handwashing and hygiene practices particularly among children

In order for the District to achieve the goal for environment, infrastructure and human settlement in the medium term, the opted development focus areas include:

- Build resilient infrastructure
- promote inclusive and sustainable industrialization and foster innovation

- Enhance road Infrastructure Maintenance
- Improve Human Settlements and Land Administration
- Make communities and human settlements inclusive, safe, resilient and sustainable
- Protect, Restore and promote sustainable use of Terrestrial Ecosystems,
- Sustainably manage forests, combat desertification, halt and reverse land degradation and biodiversity loss
- Ensure proper Water Resources Management and
- Initiate Actions to Combat Climate Change and its Impacts.

The implementable development programmes designed for achievement for the medium term include:

- 1) Programme to expand, maintain and develop roads and drainage infrastructure system for socio-economic development
- 2) Maintenance of infrastructure programme
- 3) Programme to improve and sustain spatially integrated development of human settlements and efficient and effective land administration
- 4) Disaster preparedness, prevention, management and mitigation Programme
- 5) Conservation and management of environment Programme
- 6) Protection and management of water bodies programme
- 7) Capacity building on climate change and green economy related issue Programme.

On Governance, Corruption and Public Accountability, the overall goal of the government in the medium term is to maintain a stable, united and safe country. In an attempt to achieve this, the Assembly opted for number of development goals which entail; Build effective, accountable and inclusive institutions at all levels; Ensure responsive, inclusive, participatory and representative decision making at all levels; Promote peaceful and inclusive societies for sustainable development; as well as Enhance Implementation, Coordination, Monitoring and Evaluation systems in the District. The formulated development programmes for implementation to achieve the set goals in the District entails:

1. Capacity building of staff and other key stakeholders for improve service delivery programme
2. Programme to strengthen local governance, transparency and accountability
3. Mobilization of both internal and external human, materials and financial resources programme
4. Programme to improve revenue mobilization
5. Programme to Promote citizens active participation in local governance system including, planning process and transparency and public accountability
6. Programme to improve citizens safety and security for socio-economic development
7. Capacity building on data collection and analysis, monitoring and evaluation collaboration among stake institution in service delivery programme

Finally, in the area of International Relations, the implementable programme is to promote implementation of interventions to attract diaspora participation and investment.

Table 5.2 Matrix of designed programmes to achieve set objectives

Development Programme	Time Frame				Cost			Programme Status		Implementation Institution/Department	
	2026	2027	2028	2029	GOG	IGF	Others	New	On-going	Lead	Collaborating
<p><b>Goal:</b> Promote sustained and inclusive Macro-Economy growth</p> <p><b>Objective:</b> To build the capacity of revenue staff of the Assembly to increase internal generated funds (IGF) by 30% at the end of 2029, To scale-up monitoring of revenue staff in order to block IGF leakages by 90% at the end of 2029 and To scale-up revenue mobilization campaigns to increase revenue collection from residents by 70% by December, 2029</p> <p><b>Strategy(ies):</b> Strengthen revenue institutions and administration to eliminate revenue leakages and diversify revenue and Enhance revenue mobilization Strengths of the District</p>											
1. Capacity building for revenue staff Programme						514,793.69		√		STDA	GIZ/VRCC/MOF
2. Sustainable resource mobilization programme						114,793.69		√		STDA	GIZ/VRCC/MOF
<p><b>Goal:</b> Promote sustained, inclusive and sustainable economic growth, with productive employment and decent work for all</p> <p><b>Objective:</b> :To stimulate progressively the business enabling environment to promote economic growth that ensure women’s economic participation and access to resources through partnerships with financial institutions and NGOs by December, 2029</p> <p><b>Strategy(ies):</b> Develop modern markets and retail infrastructure in the District to enhance domestic trade and Provide opportunities for MSMEs to participate in all public-private partnerships (PPPs) and local content arrangements</p>											
Promote access to affordable credit facilities especially women programme							900,000.00	√	√	STDA	NGOs/GEA /Private sector operators
Programme for enhancement of market infrastructure					18,823,906.00			√		STDA	NGOs/GEA /Private sector operators
Programme for capacity building of entrepreneurs and MSME						208,000	111,000.00	√		STDA	NGOs/GEA /Private sector operators
<p><b>Goal:</b> Promote sustained, inclusive and sustainable Tourism development to create employment and decent work for all</p> <p><b>Objective:</b> To devise and implement Programmes and projects to promote sustainable tourism that creates jobs and promotes local culture and products by 20% by December, 2029</p>											

Development Programme	Time Frame				Cost			Programme Status		Implementation Institution/Department	
	2026	2027	2028	2029	GOG	IGF	Others	New	On-going	Lead	Collaborating
<b>Strategy(ies):</b> 3 Develop available and potential tourism sites to meet international standards and Improve tourism infrastructure including road networks leading to tourist centers											
Expansion of roads and other infrastructure under tourism sector programme					360,000		150,000.00	√		STDA	GTA/GEA/ MoTCA
Programme for sustainable tourism and Creative Arts promotion						517,738	50,000.00	√		STDA	GTA/GEA/ MoTCA
<b>Goal:</b> Ensure food and income security											
<b>Objective:</b> To increase the agricultural productivity and the incomes of small-scale food producers, particularly women and fishers, including through secure and equal access to land, other productive resources and inputs, knowledge, financial services, markets, and opportunities for value addition and non-farm employment by end of December, 2029.											
<b>Strategy (ies):</b> Build the capacity of farmer-based organizations and other actors along the value chain in marketing, standards, and other skills development. Improve access to agricultural lands for marginalised groups etc.											
Capacity building of farmer-based organizations and other actors along the value chain in marketing, standards, and other skills development programme					200,000	147,000	100,000.00	√		Agric Dep't	MoFA/ NGOs/ DPs
Programme for infrastructure development in irrigation systems, farm roads and storage facilities.					11,133,675.74			√		STDA	MoFA/ NGOs/ DPs
Promote sustainable investment in livestock, poultry fishery production programme					100,000.00	40,000.00		√		Agric Dep't	MoFA/ NGOs/ DPs
Promote access to affordable credit, farm inputs, implements and farm lands programme					40,000.00	20,000.00	250,000.00	√		Agric Dep't	MoFA/ NGOs/ DPs

Development Programme	Time Frame				Cost			Programme Status		Implementation Institution/Department	
	2026	2027	2028	2029	GOG	IGF	Others	New	On-going	Lead	Collaborating
<p><b>Goal:</b> Ensure inclusiveness &amp; equitable quality education &amp; promote lifelong learning</p> <p><b>Objective:</b> To improve quality of teaching and learning environment at all levels by 60% by December, 2029 and To institute disciplinary measures at all levels of schools to reduce indiscipline among students by 70% by December, 2029</p> <p><b>Strategy(ies):</b> Enhance quality of teaching and learning environment at all levels (SDG Targets 4.1, 4.6, 4.c); Expand infrastructure and facilities at all levels (SDG Target 4.a, 4.c) etc.</p>											
1) Rehabilitation and expansion of inclusive school infrastructure Programme					37,039,887.96	500,000.00	1,9400,000	√	√	STDA/GETFUND	MoE/GES/ NGOs/ DPs
2) Programme to enhance inclusive teaching and learning of science, technology, engineering and mathematics especially females to improve quality education at all levels.					500,000.00	1,027,000	1,000,000.00	√	√	GES	MoE/STDA/ NGOs/ DPs
Programme to strengthen supervision, school management, discipline and accountability at all levels of the educational system					400,000.00	200,000.00	500,000.00	√	√	GES	MoE/STDA/ NGOs/ DPs
<p><b>Goal:</b> Safeguard healthy lives &amp; improve well-being for all at all ages</p> <p><b>Objective:</b> To improve access to resilient and inclusive quality health infrastructure and health care delivery including accommodation for health personnel by 40% by December, 2029; To devise and implement programmes to reduce indiscipline among nurses, youth and to reduce teenage pregnancy, drugs and substance abuse by 70% by end of December, 2029 etc.</p> <p><b>Strategy(ies):</b> Upgrade and expand existing health infrastructure; Improve the quality of adolescent and youth-friendly services across all levels of healthcare facilities etc.</p>											
1) Rehabilitation and expansion of inclusive Health infrastructure Programme					33,256,563.01	300,000	6,000,000.00	√	√	STDA/GHS	MoH/ NGOs/ DPs
2) Enhancement of capacity for surveillance and management of health facilities Programme					800,000.00	80,000.00	500,000.00	√	√	GHS	MoH/STDA/ NGOs/ DPs
3. Programme to improve maternal and adolescent					400,000.00	40,000.00	50,000.00	√	√	GHS	MoH/STDA/ NGOs/ DPs

Development Programme	Time Frame				Cost			Programme Status		Implementation Institution/Department	
	2026	2027	2028	2029	GOG	IGF	Others	New	On-going	Lead	Collaborating
reproductive health, reduce the rate of drugs and substance abuse											
<b>Goal:</b> Increase Employment and Decent Work <b>Objective:</b> To reduce unemployment rate by 20% in the District by the end of 2029 <b>Strategy(ies):</b> Integrate employment services with social protection programmes to enhance livelihoods and reduce vulnerabilities (SDG 4.4, 8.3, 10.4)											
1) Implement social and economic interventions to reduce poverty and income inequalities especially among the vulnerable groups Programme					134,840	112,000	80,000	√		STDA	YEA/GEA/NGOs/DPs
<b>Goal:</b> Reduce the inequality between the rich and the poor <b>Objective:</b> To empower and promote the social, economic and political inclusion of all irrespective of age, sex, disability, race, ethnicity, origin, religion or economic or other status in the District by end of 2029; To improve social services delivery by 70% through provision of adequate resources needed by the SWCD by December, 2029. <b>Strategy(ies):</b> Implement new interventions alongside the LEAP cash grant for sustainable income earning opportunities (SDG Targets 8.10, 9.3)											
Programme to create enabling environment for active participation and equal inclusion of PWDs especially women in socio-economic development					500,000.00	40,000.00	150,000.00	√		STDA/ SWCD,	GEA/NGOs/ DPs
Programme to improve economic opportunities for PWDs					1,834,572	132,000	40,000.00	√		STDA/ SWCD,	GEA/NGOs/ DPs
<b>Goal:</b> Disability-Inclusive Development <b>Objective:</b> To create enabling environment for active participation and equal inclusion of PWDs in all dimensions of development in the District by 2029 <b>Strategy (ies):</b> Provide targeted support for women with disabilities to promote their welfare and empowerment.											
Programme to create enabling environment for active participation and equal inclusion of PWDs social and economic development					40,000.00	30,000.00	50,000.00	√		STDA	NCCE, SWCD, NGOs
<b>Goal:</b> Child Protection and Development											

Development Programme	Time Frame				Cost			Programme Status		Implementation Institution/Department	
	2026	2027	2028	2029	GOG	IGF	Others	New	On-going	Lead	Collaborating
<p><b>Objective:</b> To facilitate, promote and implement programmes that Prevent and protect children from all forms of violence, abuse, neglect and exploitation in the District by December, 2029</p> <p><b>Strategy (ies):</b> Increase awareness on the effects of child labour (SDGs Target 8.7); Implement and enforce comprehensive support mechanisms, including counselling, for victims of domestic violence including child victims (SDGs Target 1.3); Strengthen family tribunal and juvenile courts etc.</p>											
Promote child rights, Protection and development programme					388,000	256,000.00	564,277	√		STDA	NCCE, SWCD, NGOs
<p><b>Goal:</b> Social Protection and Poverty Reduction</p> <p><b>Objective:</b> To reduce poverty and inequality in all forms and dimensions by 20% in the District by the end of 2029; To improve social services delivery by 70% through provision of adequate resources needed by the SWCD by December, 2029.</p> <p><b>Strategy (ies):</b> Strengthen monitoring and evaluation of social protection for all vulnerable persons (SDG Targets 1.5); Implement viable and sustainable economic livelihood schemes for vulnerable people (SDG Targets 1.4, 2.3, 14.b).</p>											
implement interventions reduce poverty and eradicate inequalities among vulnerable people programme					242,000	153,000	1,685,040.36	√		SWCD	NCCE, NGOs/STDA
Programme to strengthen monitoring and evaluation of social protection interventions.					24,000.00	9,000.00	25,000.00	√	√	STDA	NCCE, SWCD, NGOs
<p><b>Goal:</b> Achieve gender equality and empower all women and girls gap</p> <p><b>Objective:</b> To prioritize and embark on programmes and measures to give women equal rights to economic resources, as well as access to ownership and control over land and other forms of property, financial services, inheritance and natural resources, in accordance with national laws by at the end of 2029.</p> <p><b>Strategy(ies):</b> Integrate gender equality measures in the medium-term budget framework and processes; Improve access to education, health, and skills training in income generating activities for vulnerable women (SDG Targets 3.8, 4.5)</p>											
programme to reduce gender inequalities in access to education, health, and skills training in income generating activities for vulnerable women					107,207	112,000.00	25,000.00	√		STDA	Gender officer Desk
Programme to promote women participation in local governance systems					250,000.00		300,000.00	√		STDA	Gender officer Desk

Development Programme	Time Frame				Cost			Programme Status		Implementation Institution/Department	
	2026	2027	2028	2029	GOG	IGF	Others	New	On-going	Lead	Collaborating
<b>Goal:</b> Ensure availability and sustainability management of water and sanitation											
<b>Objective:</b> To increase access to adequate and potable water supply to all by 90% by December, 2029; To improve access to adequate and equitable sanitation and hygiene for all by 80% and end open defecation, paying special attention to the needs of women and girls and those in vulnerable situations by end of 2029											
<b>Strategy(ies):</b> Accelerate the implementation of the Water for All Programme (SDG Target 6.1); Promote District Total Led Sanitation Campaign (SDG Target 6.2); Scale-up sensitisation campaigns to promote proper handwashing and hygiene practices particularly among children (SDGs Target 6.2) etc.											
Programme to expand and rehabilitate inclusive drainage system, water and sanitation facilities.					9,493,706.93	147,000.00		√	√	STDA	Zoomlion/NGOs
Scale-up sensitisation campaigns to promote proper sanitation management, handwashing and hygiene practices particularly among children					2,500,000.00	150,000.00	500,000.00	√	√	STDA	Zoomlion/NGOs
<b>Goal:</b> Build resilient infrastructure, promote inclusive and sustainable industrialization and foster innovation											
<b>Objective:</b> To develop quality, reliable, sustainable and resilient infrastructure to support economic development and human well-being, with a focus on affordable and equitable access for all by 80% by end of 2029; To improve road safety, notably by expanding public transport, road signs and speed humps with special attention to the needs of those in vulnerable situations, women, children, persons with disabilities and older persons by end of December, 2029											
<b>Strategy (ies):</b> Expand and maintain road transport infrastructure (SDG Target 9.1, 11.2) (AU Target A2 G10 PI TI & 2); Strengthen health and safety standards in planning, design, construction, operations and maintenance for road transport (SDG Target 9.1, 11.2) (AU Target A2 G10 PI TI & 2) etc.											
Programme to expand, maintain and develop roads and drainage infrastructure system for socio-economic development					18,566,830.00	145,000		√	√	STDA	MoR/Feeder roads Dep't
<b>Goal:</b> Enhance Infrastructure Maintenance											
<b>Objective:</b> To leverage on new technologies to reduce cost and improve long span of government infrastructure in the District by December, 2029											
<b>Strategy(ies):</b> Enhance maintenance and management practices for all road sectors (SDG Target 9.1, 11.2) (AU Target A2 G10 PI TI & 2)											
Programme to maintain Assets including road infrastructure system for socio-economic development					2,878,228.00	195,000		√	√	STDA	Feeder roads Dep't
<b>Goal:</b> Improve Human Settlements and Land Administration											
<b>Objective:</b> To enhance collaboration between land owners and Assembly to ensure proper zoning and permitting process for development projects in the District by the end of 2029;											

Development Programme	Time Frame				Cost			Programme Status		Implementation Institution/Department	
	2026	2027	2028	2029	GOG	IGF	Others	New	On-going	Lead	Collaborating
<p>To Accelerate the preparation, revision and implementation of Spatial Plans to reduce by 60% non-conformity of building codes and standards at all levels by December, 2029  Strategy(ies): Accelerate the preparation, revision and implementation of Spatial Plans; Intensify the use of Geographic Information System (GIS) in spatial/land use planning at all levels; Intensify street naming and property addressing system etc.</p>											
Programme to improve and sustain spatially integrated development of human settlements and efficient and effective land administration					1,330,997.00	150,000.00		√	√	STDA	GIZ/LUSPA
<p><b>Goal:</b> Make communities and human settlements inclusive, safe, resilient and sustainable  <b>Objective:</b> To significantly reduce the number of affected people and decrease by 70% the economic losses caused by disasters, including water-related disasters, with the focus on protecting the poor and people in vulnerable situations.  <b>Strategy(ies):</b> Improve enforcement and compliance of disaster risk reduction (DRR) laws; Ensure inclusive and gender responsive approaches to disaster risk management etc.</p>											
Disaster prevention, management and mitigation Programme					1,400,000.00	80,000.00	500,000.00	√	√	STDA	NADMO/NGOs /VRA
<p><b>Goal:</b> To promote the implementation of sustainable management of mangroves, halt deforestation, restore degraded mangroves, and increase afforestation and reforestation by 60% by December, 2029; To significant reduce degradation of natural habitat, halt the loss of biodiversity, and by 2029 protect and prevent the extinction of threatened species (Sitatunga)  <b>Objective:</b> To reduce the destruction of mangrove and vegetation cover by 60% in order to preserve the biodiversity of the District by the end of 2029  <b>Strategy(ies):</b> Strengthen environmental governance including enforcement of relevant legislations to protect and maintain the integrity of forest, wetlands and biodiversity hotspots; Strengthen involvement of local communities in the management of forests and wetlands through mechanisms such as co-management systems (e.g., CREMAs and Community Forest Areas) etc.</p>											
Conservation and management of environment Programme					100,000.00	100,000.00	1,071,235.07	√		Forestry Commission	STDA/EPA /NGOs
<p><b>Goal:</b> Ensure Proper Water Resources Management  <b>Objective:</b> To reduce the level of Environmental Pollution, bush fires and illegal sand mining activities by 60% by the end of 2029  <b>Strategy(ies):</b> Intensify enforcement of regulations and standards on air, soil and noise pollution including open burning (SDG Targets 11.6, 16. b) (AU Target A1 G7 P3 T1); Promote efficient water use (SDG Targets) etc.</p>											
Protection and management of water bodies programme					100,000.00	40,000.00	800,000.00	√		Water Resource Commission	STDA/EPA
<p><b>Goal:</b> Initiate Actions to Combat Climate Change and its Impacts  <b>Objective:</b> To increase education, awareness raising and human and institutional capacity on climate change mitigation, adaptation, impact reduction, and early warning in the District by the end of</p>											

Development Programme	Time Frame				Cost			Programme Status		Implementation Institution/Department	
	2026	2027	2028	2029	GOG	IGF	Others	New	On-going	Lead	Collaborating
<p>2029; To promote mechanisms for raising capacities for effective climate change related planning and management, in the District, including focusing on women, youth, local and marginalized communities by end of 2029</p> <p><b>Strategy (ies):</b> Implement land restoration initiatives, climate adaptation strategies, and conservation policies to promote indigenous crops, livestock breeds, and agro-biodiversity.</p>											
Capacity building on climate change and green economy related issue Programme					338,869	120,000.00	800,000.00	√		Agric Dep't	STDA/NGOs/DP/ Forestry Comm.
<p><b>Goal:</b> Deepening Democratic Governance</p> <p><b>Objective:</b> To increase access to improved office space, accommodation for staff of all departments by 20% for improved service delivery in the District by the end of 2029; To improve the capacities of all departmental staff and Assembly members on plan preparation, implementation monitoring and evaluation to track and assess the impact of development programmes on the citizenry in the District by 2029 etc.</p> <p><b>Strategy(ies):</b> Enhance the capacity and effectiveness of assembly members and staff at the local level;</p>											
Capacity building of staff and other key stakeholders for improve service delivery programme					1,000,000.00	808,000	100,000.00	√		STDA	NGOs/DPs/ LGS
Programme to strengthen local governance, transparency and accountability					6,478,671.00	1,008,000	100,000.00	√		STDA	NGOs/DPs/ LGS
<p><b>Goal:</b> Improve Local Governance and Decentralization</p> <p><b>Objective:</b> To improve revenue mobilization both internal and external sources by 40% by December, 2029</p> <p><b>Strategy(ies):</b> Enhance revenue mobilisation capacity of the Assembly; Revamp and adequately resource sub-District structures (Town, Area, and Unit Committees) to perform statutory functions effectively etc.</p>											
Mobilization of both internal and external human, materials and financial resources programme					40,000.00	600,000.00		√		STDA	MoF/NCCE/Inf. Dep't
<p><b>Goal:</b> Build effective, accountable and inclusive institutions at all levels.</p> <p><b>Objective:</b> To develop effective, accountable and transparent institutions at all levels by end of 2029:</p> <p><b>Strategy(ies):</b> Expand access to public information and initiatives that promote accountability; Improve efficiency in service delivery; Expand access to public information and initiatives that promote accountability etc.</p>											
Programme to enhance transparent and accountable governance system					190,000.00	150,000.00	356,723.78	√		STDA	NCCE/NGOs/DPs

Development Programme	Time Frame				Cost			Programme Status		Implementation Institution/Department	
	2026	2027	2028	2029	GOG	IGF	Others	New	On-going	Lead	Collaborating
<p><b>Goal:</b> Ensure responsive, inclusive, participatory and representative decision making at all levels</p> <p><b>Objective:</b> To improve citizens active participation in local governance system including, planning process and transparency and public accountability in the District by 2029</p> <p><b>Strategy(ies):</b> Boost public interest and participation in governance; Strengthen the People's Assembly concept to encourage citizens to participate in governance etc.</p>											
Programme to Promote citizens active participation in local governance system including, planning process and transparency and public accountability					160,000.00	200,000.00	28,869.08	√		STDA	NCCE/NGOs/DPs
<p><b>Goal:</b> Promote peaceful and inclusive societies for sustainable development.</p> <p><b>Objective:</b> To improve peace and order for sustain economic growth in the District by December, 2029; To reduce burglary and other crimes levels by 50% by December, 2029</p> <p><b>Strategy (ies):</b> Intensify public education campaigns on safety and crime prevention.</p>											
Programme to improve citizens safety and security for socio-economic development					970,000.00	886,696		√		STDA	GPS/GIS/BNI
<p><b>Goal:</b> Enhance Implementation, Coordination, Monitoring and Evaluation systems in the District</p> <p><b>Objective:</b> To improve collaboration and the capacities of all departmental staff on plan preparation, implementation monitoring and evaluation to track and assess the impact of development programmes on the citizenry in the District by 2029; To Strengthen feedback mechanisms in public service delivery to increase demand and utilization of M&amp;E results and to capture citizen inputs by December, 2029</p> <p><b>Strategy(ies):</b> Promote inclusive and participatory planning processes implementation, monitoring and evaluation that integrate local economic development (LED) opportunities</p>											
Capacity building on data collection and analysis, monitoring and evaluation collaboration among stake institution in service delivery programme					1,002,794.00	797,000	200,000.00	√		STDA	CSOs/NGOs/DPs
<p><b>Goal:</b> Regional And Global Relations</p> <p><b>Attract and retain mutually beneficial and sustainable partnerships between the private sector in Ghana, international businesses, and Ghanaians in the Diaspora</b></p> <p><b>Strategy(ies):</b> Ensure participation of Ghanaians abroad in national development (SDG Target 16.7; ECOWAS Protocol Art. 23)</p>											
Promote implementation of interventions to attract diaspora participation and investment programme					20,000.00	110,000.00	2,199,794.36	√		STDA	MoLGCRA

### 5.3 Strategic Environmental Assessment of Formulated Programmes

The programmes that have been identified must undergo a thorough analysis to ensure their long-term sustainability and alignment with strategic goals. This can be achieved through the application of Strategic Environmental Assessment (SEA) tools, which provide a comprehensive framework for evaluating the environmental, social, economic, and governance implications of formulated programmes. By subjecting the programmes to SEA, MDAs, RCCs and MMDAs can assess their potential impacts across various dimensions and identify opportunities to enhance their overall effectiveness and sustainability.

In an effort to ascertain the sustainability of the South Tongu District Assembly’s Medium Term Plan, 2026-2029, the programmes that have been formulated by DPCU were subjected to strategic environmental analysis to ensure their long-term sustainability and alignment with strategic goals. It also involved assessing the internal consistency design to establish the relationship between the formulated development programmes and the four sustainability criteria of the SEA consisting of the Natural Resources, Socio-cultural Issues, Economic Issues, and Governance Issues. The detailed application of the SEA, are presented in appendix 3 below:

Table 5.2: Sustainability Test

Description of Programme: <b>Capacity building for revenue staff Programme and Sustainable resource mobilization programme</b>		
CRITERIA – BASIC AIMS AND OBJECTIVES	INDICATORS	PERFORMANCE MEASURE
<b>EFFECTS ON NATURAL RESOURCES</b>		
Protected Areas and Wildlife: should be conserved, and these resources should be enhanced where practical.	Sensitive areas shown on maps	(0) 1 2 3 4 5
Biodiversity: protection and conservation of biodiversity		
Degraded Land: Areas vulnerable to degradation should be avoided, and already degraded land should be enhanced.	Vulnerable areas shown on maps	(0) 1 2 3 4 5
Desertification: Reduce the incidence of desertification		
Energy: The Activity should encourage efficient energy use, and maximize use of renewable rather than fossil fuels.	Quantity and type of fuel/energy to be identified	(0) 1 2 3 4 5
Pollution: Discharges of pollutants and waste products to the atmosphere, water and land should be avoided or minimised.	Quantity /type of pollutants and waste to be identified	(0) 1 2 3 4 5
Use of Raw Materials: All raw materials should be used with maximum efficiency, and recycled where practical.	Quantity and type of materials	(0) 1 2 3 4 5
Rivers and Water bodies: should retain their natural character and reduce water stresses especially those affecting internationally shared basins	Minimum flows/ water levels to be set	(0) 1 2 3 4 5
Sea level rise: Reduce vulnerability to sea level rise (eg high temperature rise, emissions, etc.)		(0) 1 2 3 4 5
Food security: Enhancement of soil fertility		(0) 1 2 3 4 5
<b>EFFECTS ON SOCIAL AND CULTURAL CONDITIONS</b>		
Local Character: and cohesion of local communities should be and enhanced where practical.	Opinions of local communities to be assessed	(0) 1 2 3 4 5
Health and Well-being: The Activity should benefit the work force, and local communities in terms of reduction in the incidence of vector, water, and air borne diseases and generally health and well-being.	Number of People exposed to water borne disease, or lacking	(0) 1 2 3 4 5

	adequate food and shelter to be assessed	
Women and children: Improve livelihood of women and children.	Number of women to be empowered	(0) 1 2 3 4 5
Job Creation: The activity should create jobs for local people particularly women and young people.	Number of people to be employed	(0) 1 2 3 4 5
Participation: Active participation and involvement of local communities should be encouraged (especially vulnerable and excluded sections).	Level of participation proposed	(0) 1 2 3 4 5
Access to Land: Activity should improve access to land.	Number of the poor to be assisted	(0) 1 2 3 4 5
Access to Water: Activity should improve access to water.	Number of the poor to be assisted	(0) 1 2 3 4 5
Access to Transport: Activity should improve access to transport.	Number of the poor to be assisted	1 2 3 4 5
Sanitation: Activity should improve sanitation.	Number of the poor to be assisted	(0) 1 2 3 4 5
Equity: Adverse and beneficial impacts from development should be distributed equitably and should not discriminate against any groups, especially vulnerable and excluded people.	Number of the poor to be to benefit on equitable terms	(0) 1 2 3 4 5
Vulnerability and Risk: of drought, bushfire, floods crises and conflicts and epidemics should be reduced.	Occurrence to be noted and monitored	(0) 1 2 3 4 5
<b>EFFECTS ON THE ECONOMY</b>		
Growth: The PPP should result in development that encourages strong and stable conditions of economic growth.	Economic Output to be evaluated	(0) 1 2 3 4 5
Use of local materials and services: The PPP should result in the use of raw materials and services from local industries where possible.	Description of sources	(0) 1 2 3 4 5
Local Investment of Capital: Development should encourage the local retention of capital and the development of downstream industries, utilizing local raw materials, products and labor.	Description of investment strategy	(0) 1 2 3 4 5
<b>INSTITUTIONAL ISSUES</b>		
Adherence to democratic principles		(0) 1 2 3 4 5
Human Rights		(0) 1 2 3 4 5
Access to information		(0) 1 2 3 4 5
Regulation/Compliance: PPP should ensure best practice and compliance with environmental/industry standards and guidelines.		(0) 1 2 3 4 5

### Sustainability Test

<b>Description of programme: Programme for enhancement of market infrastructure, Promote access to affordable credit facilities especially women programme and Programme for capacity building of entrepreneurs and MSME</b>		
CRITERIA – BASIC AIMS AND OBJECTIVES	INDICATORS	PERFORMANCE MEASURE
<b>EFFECTS ON NATURAL RESOURCES</b>		
Protected Areas and Wildlife: should be conserved, and these resources should be enhanced where practical.	Sensitive areas shown on maps	(0) 1 2 3 4 5

Biodiversity: protection and conservation of biodiversity		(0) 1 2 3 4 5
Degraded Land: Areas vulnerable to degradation should be avoided, and already degraded land should be enhanced.	Vulnerable areas shown on maps	(0) 1 2 3 4 5
Desertification: Reduce the incidence of desertification		(0) 1 2 3 4 5
Energy: The Activity should encourage efficient energy use, and maximize use of renewable rather than fossil fuels.	Quantity and type of fuel/energy to be identified	(0) 1 2 3 4 5
Pollution: Discharges of pollutants and waste products to the atmosphere, water and land should be avoided or minimised.	Quantity /type of pollutants and waste to be identified	(0) 1 2 3 4 5
Use of Raw Materials: All raw materials should be used with maximum efficiency, and recycled where practical.	Quantity and type of materials	(0) 1 2 3 4 5
Rivers and Water bodies: should retain their natural character and reduce water stresses especially those affecting internationally shared basins	Minimum flows/ water levels to be set	(0) 1 2 3 4 5
Sea level rise: Reduce vulnerability to sea level rise (eg high temperature rise, emissions, etc.)		(0) 1 2 3 4 5
Food security: Enhancement of soil fertility		(0) 1 2 3 4 5
<b>EFFECTS ON SOCIAL AND CULTURAL CONDITIONS</b>		
Local Character: and cohesion of local communities should be and enhanced where practical.	Opinions of local communities to be assessed	(0) 1 2 3 4 5
Health and Well-being: The Activity should benefit the work force, and local communities in terms of reduction in the incidence of vector, water, and air borne diseases and generally health and well-being.	Number of People exposed to water borne disease, or lacking adequate food and shelter to be assessed	(0) 1 2 3 4 5
Women and children: Improve livelihood of women and children.	Number of women to be empowered	(0) 1 2 3 4 5
Job Creation: The activity should create jobs for local people particularly women and young people.	Number of people to be employed	(0) 1 2 3 4 5
Participation: Active participation and involvement of local communities should be encouraged (especially vulnerable and excluded sections).	Level of participation proposed	(0) 1 2 3 4 5
Access to Land: Activity should improve access to land.	Number of the poor to be assisted	(0) 1 2 3 4 5
Access to Water: Activity should improve access to water.	Number of the poor to be assisted	(0) 1 2 3 4 5
Access to Transport: Activity should improve access to transport.	Number of the poor to be assisted	1 2 3 4 5
Sanitation: Activity should improve sanitation.	Number of the poor to be assisted	(0) 1 2 3 4 5
Equity: Adverse and beneficial impacts from development should be distributed equitably and should not discriminate against any groups, especially vulnerable and excluded people.	Number of the poor to be to benefit on equitable terms	(0) 1 2 3 4 5
Vulnerability and Risk: of drought, bushfire, floods crises and conflicts and epidemics should be reduced.	Occurrence to be noted and monitored	(0) 1 2 3 4 5
<b>EFFECTS ON THE ECONOMY</b>		
Growth: The PPP should result in development that encourages strong and stable conditions of economic growth.	Economic Output to be evaluated	(0) 1 2 3 4 5

Use of local materials and services: The PPP should result in the use of raw materials and services from local industries where possible.	Description of sources	(0) 1 2 3 4 5
Local Investment of Capital: Development should encourage the local retention of capital and the development of downstream industries, utilizing local raw materials, products and labor.	Description of investment strategy	(0) 1 2 3 4 5
<b>INSTITUTIONAL ISSUES</b>		
Adherence to democratic principles		(0) 1 2 3 4 5
Human Rights		(0) 1 2 3 4 5
Access to information		(0) 1 2 3 4 5
<i>Regulation/Compliance:</i> PPP should ensure best practice and compliance with environmental/industry standards and guidelines.		(0) 1 2 3 4 5

Sustainability Test

<b>Description of programme: Expansion of roads and other infrastructure under tourism sector programme and Programme for sustainable tourism and Creative Arts promotion</b>		
<b>CRITERIA – BASIC AIMS AND OBJECTIVES</b>	<b>INDICATORS</b>	<b>PERFORMANCE MEASURE</b>
<b>EFFECTS ON NATURAL RESOURCES</b>		
Protected Areas and Wildlife: should be conserved, and these resources should be enhanced where practical.	Sensitive areas shown on maps	(0) 1 2 3 4 5
Biodiversity: protection and conservation of biodiversity		(0) 1 2 3 4 5
Degraded Land: Areas vulnerable to degradation should be avoided, and already degraded land should be enhanced.	Vulnerable areas shown on maps	(0) 1 2 3 4 5
Desertification: Reduce the incidence of desertification		(0) 1 2 3 4 5
Energy: The Activity should encourage efficient energy use, and maximize use of renewable rather than fossil fuels.	Quantity and type of fuel/energy to be identified	(0) 1 2 3 4 5
Pollution: Discharges of pollutants and waste products to the atmosphere, water and land should be avoided or minimized.	Quantity /type of pollutants and waste to be identified	(0) 1 2 3 4 5
Use of Raw Materials: All raw materials should be used with maximum efficiency, and recycled where practical.	Quantity and type of materials	(0) 1 2 3 4 5
Rivers and Water bodies: should retain their natural character and reduce water stresses especially those affecting internationally shared basins	Minimum flows/ water levels to be set	(0) 1 2 3 4 5
Sea level rise: Reduce vulnerability to sea level rise (eg high temperature rise, emissions, etc.)		(0) 1 2 3 4 5
Food security: Enhancement of soil fertility		(0) 1 2 3 4 5
<b>EFFECTS ON SOCIAL AND CULTURAL CONDITIONS</b>		
Local Character: and cohesion of local communities should be and enhanced where practical.	Opinions of local communities to be assessed	(0) 1 2 3 4 5
Health and Well-being: The Activity should benefit the work force, and local communities in terms of reduction in the incidence of vector, water, and air borne diseases and generally health and well-being.	Number of People exposed to water borne disease, or lacking adequate food and shelter to be assessed	(0) 1 2 3 4 5

Women and children: Improve livelihood of women and children.	Number of women to be empowered	(0) 1 2 3 4 5
Job Creation: The activity should create jobs for local people particularly women and young people.	Number of people to be employed	(0) 1 2 3 4 5
Participation: Active participation and involvement of local communities should be encouraged (especially vulnerable and excluded sections).	Level of participation proposed	(0) 1 2 3 4 5
Access to Land: Activity should improve access to land.	Number of the poor to be assisted	(0) 1 2 3 4 5
Access to Water: Activity should improve access to water.	Number of the poor to be assisted	(0) 1 2 3 4 5
Access to Transport: Activity should improve access to transport.	Number of the poor to be assisted	1 2 3 4 5
Sanitation: Activity should improve sanitation.	Number of the poor to be assisted	(0) 1 2 3 4 5
Equity: Adverse and beneficial impacts from development should be distributed equitably and should not discriminate against any groups, especially vulnerable and excluded people.	Number of the poor to be to benefit on equitable terms	(0) 1 2 3 4 5
Vulnerability and Risk: of drought, bushfire, floods crises and conflicts and epidemics should be reduced.	Occurrence to be noted and monitored	(0) 1 2 3 4 5
<b>EFFECTS ON THE ECONOMY</b>		
Growth: The PPP should result in development that encourages strong and stable conditions of economic growth.	Economic Output to be evaluated	(0) 1 2 3 4 5
Use of local materials and services: The PPP should result in the use of raw materials and services from local industries where possible.	Description of sources	(0) 1 2 3 4 5
Local Investment of Capital: Development should encourage the local retention of capital and the development of downstream industries, utilising local raw materials, products and labour.	Description of investment strategy	(0) 1 2 3 4 5
<b>INSTITUTIONAL ISSUES</b>		
Adherence to democratic principles		(0) 1 2 3 4 5
Human Rights		(0) 1 2 3 4 5
Access to information		(0) 1 2 3 4 5
<i>Regulation/Compliance:</i> PPP should ensure best practice and compliance with environmental/industry standards and guidelines.		(0) 1 2 3 4 5
Description of Activity: Agricultural Development		
<b>CRITERIA – BASIC AIMS AND OBJECTIVES</b>	<b>INDICATORS</b>	<b>PERFORMANCE MEASURE</b>
<b>EFFECTS ON NATURAL RESOURCES</b>		
Protected Areas and Wildlife: should be conserved, and these resources should be enhanced where practical.	Sensitive areas shown on maps	(0) 1 2 3 4 5
Biodiversity: protection and conservation of biodiversity		(0) 1 2 3 4 5
Degraded Land: Areas vulnerable to degradation should be avoided, and already degraded land should be enhanced.	Vulnerable areas shown on maps	(0) 1 2 3 4 5
Dsertification: Reduce the incidence of desertification		(0) 1 2 3 4 5

Energy: The Activity should encourage efficient energy use, and maximize use of renewable rather than fossil fuels.	Quantity and type of fuel/energy to be identified	(0) 1 2 3 4 5
Pollution: Discharges of pollutants and waste products to the atmosphere, water and land should be avoided or minimized.	Quantity /type of pollutants and waste to be identified	(0) 1 2 3 4 5
Use of Raw Materials: All raw materials should be used with maximum efficiency, and recycled where practical.	Quantity and type of materials	(0) 1 2 3 4 5
Rivers and Water bodies: should retain their natural character and reduce water stresses especially those affecting internationally shared basins	Minimum flows/ water levels to be set	(0) 1 2 3 4 5
Sea level rise: Reduce vulnerability to sea level rise (eg high temperature rise, emissions, etc.)		(0) 1 2 3 4 5
Food security: Enhancement of soil fertility		(0) 1 2 3 4 5
<b>EFFECTS ON SOCIAL AND CULTURAL CONDITIONS</b>		
Local Character: and cohesion of local communities should be and enhanced where practical.	Opinions of local communities to be assessed	(0) 1 2 3 4 5
Health and Well-being: The Activity should benefit the work force, and local communities in terms of reduction in the incidence of vector, water, and air borne diseases and generally health and well-being.	Number of People exposed to water borne disease, or lacking adequate food and shelter to be assessed	(0) 1 2 3 4 5
Women and children: Improve livelihood of women and children.	Number of women to be empowered	(0) 1 2 3 4 5
Job Creation: The activity should create jobs for local people particularly women and young people.	Number of people to be employed	(0) 1 2 3 4 5
Participation: Active participation and involvement of local communities should be encouraged (especially vulnerable and excluded sections).	Level of participation proposed	(0) 1 2 3 4 5
Access to Land: Activity should improve access to land.	Number of the poor to be assisted	(0) 1 2 3 4 5
Access to Water: Activity should improve access to water.	Number of the poor to be assisted	(0) 1 2 3 4 5
Access to Transport: Activity should improve access to transport.	Number of the poor to be assisted	1 2 3 4 5
Sanitation: Activity should improve sanitation.	Number of the poor to be assisted	(0) 1 2 3 4 5
Equity: Adverse and beneficial impacts from development should be distributed equitably and should not discriminate against any groups, especially vulnerable and excluded people.	Number of the poor to be to benefit on equitable terms	(0) 1 2 3 4 5
Vulnerability and Risk: of drought, bushfire, floods crises and conflicts and epidemics should be reduced.	Occurrence to be noted and monitored	(0) 1 2 3 4 5
<b>EFFECTS ON THE ECONOMY</b>		
Growth: The PPP should result in development that encourages strong and stable conditions of economic growth.	Economic Output to be evaluated	(0) 1 2 3 4 5
Use of local materials and services: The PPP should result in the use of raw materials and services from local industries where possible.	Description of sources	(0) 1 2 3 4 5
Local Investment of Capital: Development should encourage the local retention of capital and the development of downstream industries, utilizing local raw materials, products and labour.	Description of investment strategy	(0) 1 2 3 4 5

INSTITUTIONAL ISSUES		
Adherence to democratic principles		(0) 1 2 3 4 5
Human Rights		(0) 1 2 3 4 5
Access to information		(0) 1 2 3 4 5
<i>Regulation/Compliance:</i> PPP should ensure best practice and compliance with environmental/industry standards and guidelines.		(0) 1 2 3 4 5

#### Sustainability Test

<b>Description of Programme: Capacity building of farmer-based organizations and other actors along the value chain in marketing, standards, and other skills development programme, Programme for infrastructure development in irrigation systems, farm roads and storage facilities, Promote sustainable investment in livestock and poultry production programme and Promote access to affordable credit, farm inputs, implements and farm lands programme</b>		
CRITERIA – BASIC AIMS AND OBJECTIVES	INDICATORS	PERFORMANCE MEASURE
<b>EFFECTS ON NATURAL RESOURCES</b>		
Protected Areas and Wildlife: should be conserved, and these resources should be enhanced where practical.	Sensitive areas shown on maps	(0) 1 2 3 4 5
Biodiversity: protection and conservation of biodiversity		(0) 1 2 3 4 5
Degraded Land: Areas vulnerable to degradation should be avoided, and already degraded land should be enhanced.	Vulnerable areas shown on maps	(0) 1 2 3 4 5
Desertification: Reduce the incidence of desertification		(0) 1 2 3 4 5
Energy: The Activity should encourage efficient energy use, and maximize use of renewable rather than fossil fuels.	Quantity and type of fuel/energy to be identified	(0) 1 2 3 4 5
Pollution: Discharges of pollutants and waste products to the atmosphere, water and land should be avoided or minimized.	Quantity /type of pollutants and waste to be identified	(0) 1 2 3 4 5
Use of Raw Materials: All raw materials should be used with maximum efficiency, and recycled where practical.	Quantity and type of materials	(0) 1 2 3 4 5
Rivers and Water bodies: should retain their natural character and reduce water stresses especially those affecting internationally shared basins	Minimum flows/ water levels to be set	(0) 1 2 3 4 5
Sea level rise: Reduce vulnerability to sea level rise (eg high temperature rise, emissions, etc.)		(0) 1 2 3 4 5
Food security: Enhancement of soil fertility		(0) 1 2 3 4 5
<b>EFFECTS ON SOCIAL AND CULTURAL CONDITIONS</b>		
Local Character: and cohesion of local communities should be and enhanced where practical.	Opinions of local communities to be assessed	(0) 1 2 3 4 5
Health and Well-being: The Activity should benefit the work force, and local communities in terms of reduction in the incidence of vector, water, and air borne diseases and generally health and well-being.	Number of People exposed to water borne disease, or lacking adequate food and shelter to be assessed	(0) 1 2 3 4 5
Women and children: Improve livelihood of women and children.	Number of women to be empowered	(0) 1 2 3 4 5

Job Creation: The activity should create jobs for local people particularly women and young people.	Number of people to be employed	(0) 1 2 3 4 5
Participation: Active participation and involvement of local communities should be encouraged (especially vulnerable and excluded sections).	Level of participation proposed	(0) 1 2 3 4 5
Access to Land: Activity should improve access to land.	Number of the poor to be assisted	(0) 1 2 3 4 5
Access to Water: Activity should improve access to water.	Number of the poor to be assisted	(0) 1 2 3 4 5
Access to Transport: Activity should improve access to transport.	Number of the poor to be assisted	1 2 3 4 5
Sanitation: Activity should improve sanitation.	Number of the poor to be assisted	(0) 1 2 3 4 5
Equity: Adverse and beneficial impacts from development should be distributed equitably and should not discriminate against any groups, especially vulnerable and excluded people.	Number of the poor to be to benefit on equitable terms	(0) 1 2 3 4 5
Vulnerability and Risk: of drought, bushfire, floods crises and conflicts and epidemics should be reduced.	Occurrence to be noted and monitored	(0) 1 2 3 4 5
<b>EFFECTS ON THE ECONOMY</b>		
Growth: The PPP should result in development that encourages strong and stable conditions of economic growth.	Economic Output to be evaluated	(0) 1 2 3 4 5
Use of local materials and services: The PPP should result in the use of raw materials and services from local industries where possible.	Description of sources	(0) 1 2 3 4 5
Local Investment of Capital: Development should encourage the local retention of capital and the development of downstream industries, utilizing local raw materials, products and labor.	Description of investment strategy	(0) 1 2 3 4 5
<b>INSTITUTIONAL ISSUES</b>		
Adherence to democratic principles		(0) 1 2 3 4 5
Human Rights		(0) 1 2 3 4 5
Access to information		(0) 1 2 3 4 5
<i>Regulation/Compliance:</i> PPP should ensure best practice and compliance with environmental/industry standards and guidelines.		(0) 1 2 3 4 5

<b>Description of Activity: Rehabilitation and expansion of inclusive school infrastructure Programme, Programme to enhance inclusive teaching and learning of science, technology, engineering and mathematics especially females to improve quality education at all levels and Programme to strengthen supervision, school management, discipline and accountability at all levels of the educational system</b>		
CRITERIA – BASIC AIMS AND OBJECTIVES	INDICATORS	PERFORMANCE MEASURE
<b>EFFECTS ON NATURAL RESOURCES</b>		
Protected Areas and Wildlife: should be conserved, and these resources should be enhanced where practical.	Sensitive areas shown on maps	(0) 1 2 3 4 5
Biodiversity: protection and conservation of biodiversity		(0) 1 2 3 4 5
Degraded Land: Areas vulnerable to degradation should be avoided, and already degraded land should be enhanced.	Vulnerable areas shown on maps	(0) 1 2 3 4 5

Desertification: Reduce the incidence of desertification		(0) 1 2 3 4 5
Energy: The Activity should encourage efficient energy use, and maximize use of renewable rather than fossil fuels.	Quantity and type of fuel/energy to be identified	(0) 1 2 3 4 5
Pollution: Discharges of pollutants and waste products to the atmosphere, water and land should be avoided or minimised.	Quantity /type of pollutants and waste to be identified	(0) 1 2 3 4 5
Use of Raw Materials: All raw materials should be used with maximum efficiency, and recycled where practical.	Quantity and type of materials	(0) 1 2 3 4 5
Rivers and Water bodies: should retain their natural character and reduce water stresses especially those affecting internationally shared basins	Minimum flows/ water levels to be set	(0) 1 2 3 4 5
Sea level rise: Reduce vulnerability to sea level rise (eg high temperature rise, emissions, etc.)		(0) 1 2 3 4 5
Food security: Enhancement of soil fertility		(0) 1 2 3 4 5
<b>EFFECTS ON SOCIAL AND CULTURAL CONDITIONS</b>		
Local Character: and cohesion of local communities should be and enhanced where practical.	Opinions of local communities to be assessed	(0) 1 2 3 4 5
Health and Well-being: The Activity should benefit the work force, and local communities in terms of reduction in the incidence of vector, water, and air borne diseases and generally health and well-being.	Number of People exposed to water borne disease, or lacking adequate food and shelter to be assessed	(0) 1 2 3 4 5
Women and children: Improve livelihood of women and children.	Number of women to be empowered	(0) 1 2 3 4 5
Job Creation: The activity should create jobs for local people particularly women and young people.	Number of people to be employed	(0) 1 2 3 4 5
Participation: Active participation and involvement of local communities should be encouraged (especially vulnerable and excluded sections).	Level of participation proposed	(0) 1 2 3 4 5
Access to Land: Activity should improve access to land.	Number of the poor to be assisted	(0) 1 2 3 4 5
Access to Water: Activity should improve access to water.	Number of the poor to be assisted	(0) 1 2 3 4 5
Access to Transport: Activity should improve access to transport.	Number of the poor to be assisted	1 2 3 4 5
Sanitation: Activity should improve sanitation.	Number of the poor to be assisted	(0) 1 2 3 4 5
Equity: Adverse and beneficial impacts from development should be distributed equitably and should not discriminate against any groups, especially vulnerable and excluded people.	Number of the poor to be to benefit on equitable terms	(0) 1 2 3 4 5
Vulnerability and Risk: of drought, bushfire, floods crises and conflicts and epidemics should be reduced.	Occurrence to be noted and monitored	(0) 1 2 3 4 5
<b>EFFECTS ON THE ECONOMY</b>		
Growth: The PPP should result in development that encourages strong and stable conditions of economic growth.	Economic Output to be evaluated	(0) 1 2 3 4 5
Use of local materials and services: The PPP should result in the use of raw materials and services from local industries where possible.	Description of sources	(0) 1 2 3 4 5

Local Investment of Capital: Development should encourage the local retention of capital and the development of downstream industries, utilising local raw materials, products and labour.	Description of investment strategy	(0) 1 2 3 4 5
<b>INSTITUTIONAL ISSUES</b>		
Adherence to democratic principles		(0) 1 2 3 4 5
Human Rights		(0) 1 2 3 4 5
Access to information		(0) 1 2 3 4 5
Regulation/Compliance: PPP should ensure best practice and compliance with environmental/industry standards and guidelines.		(0) 1 2 3 4 5

Sustainability Test

<b>Description of Activity: Rehabilitation and expansion of inclusive Health infrastructure Programme, Enhancement of capacity for surveillance and management of health facilities Programme and Programme to improve maternal and adolescent reproductive health, reduce the rate of drugs and substance abuse</b>		
CRITERIA – BASIC AIMS AND OBJECTIVES	INDICATORS	PERFORMANCE MEASURE
<b>EFFECTS ON NATURAL RESOURCES</b>		
Protected Areas and Wildlife: should be conserved, and these resources should be enhanced where practical.	Sensitive areas shown on maps	(0) 1 2 3 4 5
Biodiversity: protection and conservation of biodiversity		(0) 1 2 3 4 5
Degraded Land: Areas vulnerable to degradation should be avoided, and already degraded land should be enhanced.	Vulnerable areas shown on maps	(0) 1 2 3 4 5
Desertification: Reduce the incidence of desertification		(0) 1 2 3 4 5
Energy: The Activity should encourage efficient energy use, and maximize use of renewable rather than fossil fuels.	Quantity and type of fuel/energy to be identified	(0) 1 2 3 4 5
Pollution: Discharges of pollutants and waste products to the atmosphere, water and land should be avoided or minimised.	Quantity /type of pollutants and waste to be identified	(0) 1 2 3 4 5
Use of Raw Materials: All raw materials should be used with maximum efficiency, and recycled where practical.	Quantity and type of materials	(0) 1 2 3 4 5
Rivers and Water bodies: should retain their natural character and reduce water stresses especially those affecting internationally shared basins	Minimum flows/ water levels to be set	(0) 1 2 3 4 5
Sea level rise: Reduce vulnerability to sea level rise (eg high temperature rise, emissions, etc.)		(0) 1 2 3 4 5
Food security: Enhancement of soil fertility		(0) 1 2 3 4 5
<b>EFFECTS ON SOCIAL AND CULTURAL CONDITIONS</b>		
Local Character: and cohesion of local communities should be and enhanced where practical.	Opinions of local communities to be assessed	(0) 1 2 3 4 5
Health and Well-being: The Activity should benefit the work force, and local communities in terms of reduction in the incidence of vector, water, and air borne diseases and generally health and well-being.	Number of People exposed to water borne disease, or lacking adequate food and shelter to be assessed	(0) 1 2 3 4 5
Women and children: Improve livelihood of women and children.	Number of women to be empowered	(0) 1 2 3 4 5

Job Creation: The activity should create jobs for local people particularly women and young people.	Number of people to be employed	(0) 1 2 3 4 5
Participation: Active participation and involvement of local communities should be encouraged (especially vulnerable and excluded sections).	Level of participation proposed	(0) 1 2 3 4 5
Access to Land: Activity should improve access to land.	Number of the poor to be assisted	(0) 1 2 3 4 5
Access to Water: Activity should improve access to water.	Number of the poor to be assisted	(0) 1 2 3 4 5
Access to Transport: Activity should improve access to transport.	Number of the poor to be assisted	1 2 3 4 5
Sanitation: Activity should improve sanitation.	Number of the poor to be assisted	(0) 1 2 3 4 5
Equity: Adverse and beneficial impacts from development should be distributed equitably and should not discriminate against any groups, especially vulnerable and excluded people.	Number of the poor to be to benefit on equitable terms	(0) 1 2 3 4 5
Vulnerability and Risk: of drought, bushfire, floods crises and conflicts and epidemics should be reduced.	Occurrence to be noted and monitored	(0) 1 2 3 4 5
<b>EFFECTS ON THE ECONOMY</b>		
Growth: The PPP should result in development that encourages strong and stable conditions of economic growth.	Economic Output to be evaluated	(0) 1 2 3 4 5
Use of local materials and services: The PPP should result in the use of raw materials and services from local industries where possible.	Description of sources	(0) 1 2 3 4 5
Local Investment of Capital: Development should encourage the local retention of capital and the development of downstream industries, utilising local raw materials, products and labour.	Description of investment strategy	(0) 1 2 3 4 5
<b>INSTITUTIONAL ISSUES</b>		
Adherence to democratic principles		(0) 1 2 3 4 5
Human Rights		(0) 1 2 3 4 5
Access to information		(0) 1 2 3 4 5
Regulation/Compliance: PPP should ensure best practice and compliance with environmental/industry standards and guidelines.		(0) 1 2 3 4 5

#### Sustainability Test

Description of programme: Implement social and economic interventions to reduce poverty and income inequalities especially among the vulnerable groups Programme		
<b>CRITERIA – BASIC AIMS AND OBJECTIVES</b>	<b>INDICATORS</b>	<b>PERFORMANCE MEASURE</b>
<b>EFFECTS ON NATURAL RESOURCES</b>		
Protected Areas and Wildlife: should be conserved, and these resources should be enhanced where practical.	Sensitive areas shown on maps	(0) 1 2 3 4 5
Biodiversity: protection and conservation of biodiversity		
Degraded Land: Areas vulnerable to degradation should be avoided, and already degraded land should be enhanced.	Vulnerable areas shown on maps	(0) 1 2 3 4 5

Desertification: Reduce the incidence of desertification		
Energy: The Activity should encourage efficient energy use, and maximize use of renewable rather than fossil fuels.	Quantity and type of fuel/energy to be identified	(0) 1 2 3 4 5
Pollution: Discharges of pollutants and waste products to the atmosphere, water and land should be avoided or minimised.	Quantity /type of pollutants and waste to be identified	(0) 1 2 3 4 5
Use of Raw Materials: All raw materials should be used with maximum efficiency, and recycled where practical.	Quantity and type of materials	(0) 1 2 3 4 5
Rivers and Water bodies: should retain their natural character and reduce water stresses especially those affecting internationally shared basins	Minimum flows/ water levels to be set	(0) 1 2 3 4 5
Sea level rise: Reduce vulnerability to sea level rise (eg high temperature rise, emissions, etc.)		(0) 1 2 3 4 5
Food security: Enhancement of soil fertility		(0) 1 2 3 4 5
<b>EFFECTS ON SOCIAL AND CULTURAL CONDITIONS</b>		
Local Character: and cohesion of local communities should be and enhanced where practical.	Opinions of local communities to be assessed	(0) 1 2 3 4 5
Health and Well-being: The Activity should benefit the work force, and local communities in terms of reduction in the incidence of vector, water, and air borne diseases and generally health and well-being.	Number of People exposed to water borne disease, or lacking adequate food and shelter to be assessed	(0) 1 2 3 4 5
Women and children: Improve livelihood of women and children.	Number of women to be empowered	(0) 1 2 3 4 5
Job Creation: The activity should create jobs for local people particularly women and young people.	Number of people to be employed	(0) 1 2 3 4 5
Participation: Active participation and involvement of local communities should be encouraged (especially vulnerable and excluded sections).	Level of participation proposed	(0) 1 2 3 4 5
Access to Land: Activity should improve access to land.	Number of the poor to be assisted	(0) 1 2 3 4 5
Access to Water: Activity should improve access to water.	Number of the poor to be assisted	(0) 1 2 3 4 5
Access to Transport: Activity should improve access to transport.	Number of the poor to be assisted	1 2 3 4 5
Sanitation: Activity should improve sanitation.	Number of the poor to be assisted	(0) 1 2 3 4 5
Equity: Adverse and beneficial impacts from development should be distributed equitably and should not discriminate against any groups, especially vulnerable and excluded people.	Number of the poor to be to benefit on equitable terms	(0) 1 2 3 4 5
Vulnerability and Risk: of drought, bushfire, floods crises and conflicts and epidemics should be reduced.	Occurrence to be noted and monitored	(0) 1 2 3 4 5
<b>EFFECTS ON THE ECONOMY</b>		
Growth: The PPP should result in development that encourages strong and stable conditions of economic growth.	Economic Output to be evaluated	(0) 1 2 3 4 5
Use of local materials and services: The PPP should result in the use of raw materials and services from local industries where possible.	Description of sources	(0) 1 2 3 4 5

Local Investment of Capital: Development should encourage the local retention of capital and the development of downstream industries, utilising local raw materials, products and labour.	Description of investment strategy	(0) 1 2 3 4 5
<b>INSTITUTIONAL ISSUES</b>		
Adherence to democratic principles		(0) 1 2 3 4 5
Human Rights		(0) 1 2 3 4 5
Access to information		(0) 1 2 3 4 5
<i>Regulation/Compliance:</i> PPP should ensure best practice and compliance with environmental/industry standards and guidelines.		(0) 1 2 3 4 5

Sustainability Test

<b>Description of Programme: Programme to improve economic opportunities for PWDs and Programme to create enabling environment for active participation and equal inclusion of PWDs especially women in socio-economic development</b>		
CRITERIA – BASIC AIMS AND OBJECTIVES	INDICATORS	PERFORMANCE MEASURE
<b>EFFECTS ON NATURAL RESOURCES</b>		
Protected Areas and Wildlife: should be conserved, and these resources should be enhanced where practical.	Sensitive areas shown on maps	(0) 1 2 3 4 5
Biodiversity: protection and conservation of biodiversity		(0) 1 2 3 4 5
Degraded Land: Areas vulnerable to degradation should be avoided, and already degraded land should be enhanced.	Vulnerable areas shown on maps	(0) 1 2 3 4 5
Desertification: Reduce the incidence of desertification		(0) 1 2 3 4 5
Energy: The Activity should encourage efficient energy use, and maximize use of renewable rather than fossil fuels.	Quantity and type of fuel/energy to be identified	(0) 1 2 3 4 5
Pollution: Discharges of pollutants and waste products to the atmosphere, water and land should be avoided or minimised.	Quantity /type of pollutants and waste to be identified	(0) 1 2 3 4 5
Use of Raw Materials: All raw materials should be used with maximum efficiency, and recycled where practical.	Quantity and type of materials	(0) 1 2 3 4 5
Rivers and Water bodies: should retain their natural character and reduce water stresses especially those affecting internationally shared basins	Minimum flows/ water levels to be set	(0) 1 2 3 4 5
Sea level rise: Reduce vulnerability to sea level rise (eg high temperature rise, emissions, etc.)		(0) 1 2 3 4 5
Food security: Enhancement of soil fertility		(0) 1 2 3 4 5
<b>EFFECTS ON SOCIAL AND CULTURAL CONDITIONS</b>		
Local Character: and cohesion of local communities should be and enhanced where practical.	Opinions of local communities to be assessed	(0) 1 2 3 4 5
Health and Well-being: The Activity should benefit the work force, and local communities in terms of reduction in the incidence of vector, water, and air borne diseases and generally health and well-being.	Number of People exposed to water borne disease, or lacking adequate food and shelter to be assessed	(0) 1 2 3 4 5
Women and children: Improve livelihood of women and children.	Number of women to be empowered	(0) 1 2 3 4 5
Job Creation: The activity should create jobs for local people particularly women and young people.	Number of people to be employed	(0) 1 2 3 4 5

Participation: Active participation and involvement of local communities should be encouraged (especially vulnerable and excluded sections).	Level of participation proposed	(0) 1 2 3 4 5
Access to Land: Activity should improve access to land.	Number of the poor to be assisted	(0) 1 2 3 4 5
Access to Water: Activity should improve access to water.	Number of the poor to be assisted	(0) 1 2 3 4 5
Access to Transport: Activity should improve access to transport.	Number of the poor to be assisted	1 2 3 4 5
Sanitation: Activity should improve sanitation.	Number of the poor to be assisted	(0) 1 2 3 4 5
Equity: Adverse and beneficial impacts from development should be distributed equitably and should not discriminate against any groups, especially vulnerable and excluded people.	Number of the poor to be to benefit on equitable terms	(0) 1 2 3 4 5
Vulnerability and Risk: of drought, bushfire, floods crises and conflicts and epidemics should be reduced.	Occurrence to be noted and monitored	(0) 1 2 3 4 5
<b>EFFECTS ON THE ECONOMY</b>		
Growth: The PPP should result in development that encourages strong and stable conditions of economic growth.	Economic Output to be evaluated	(0) 1 2 3 4 5
Use of local materials and services: The PPP should result in the use of raw materials and services from local industries where possible.	Description of sources	(0) 1 2 3 4 5
Local Investment of Capital: Development should encourage the local retention of capital and the development of downstream industries, utilising local raw materials, products and labour.	Description of investment strategy	(0) 1 2 3 4 5
<b>INSTITUTIONAL ISSUES</b>		
Adherence to democratic principles		(0) 1 2 3 4 5
Human Rights		(0) 1 2 3 4 5
Access to information		(0) 1 2 3 4 5
Regulation/Compliance: PPP should ensure best practice and compliance with environmental/industry standards and guidelines.		(0) 1 2 3 4 5

Sustainability Test

<b>Description of Programme: Programme to create enabling environment for active participation and equal inclusion of PWDs especially women in socio-economic development</b>		
CRITERIA – BASIC AIMS AND OBJECTIVES	INDICATORS	PERFORMANCE MEASURE
<b>EFFECTS ON NATURAL RESOURCES</b>		
Protected Areas and Wildlife: should be conserved, and these resources should be enhanced where practical.	Sensitive areas shown on maps	(0) 1 2 3 4 5
Biodiversity: protection and conservation of biodiversity		(0) 1 2 3 4 5
Degraded Land: Areas vulnerable to degradation should be avoided, and already degraded land should be enhanced.	Vulnerable areas shown on maps	(0) 1 2 3 4 5
Desertification: Reduce the incidence of desertification		(0) 1 2 3 4 5
Energy: The Activity should encourage efficient energy use, and maximize use of renewable rather than fossil fuels.	Quantity and type of fuel/energy to be identified	(0) 1 2 3 4 5

Pollution: Discharges of pollutants and waste products to the atmosphere, water and land should be avoided or minimised.	Quantity /type of pollutants and waste to be identified	(0) 1 2 3 4 5
Use of Raw Materials: All raw materials should be used with maximum efficiency, and recycled where practical.	Quantity and type of materials	(0) 1 2 3 4 5
Rivers and Water bodies: should retain their natural character and reduce water stresses especially those affecting internationally shared basins	Minimum flows/ water levels to be set	(0) 1 2 3 4 5
Sea level rise: Reduce vulnerability to sea level rise (eg high temperature rise, emissions, etc.)		(0) 1 2 3 4 5
Food security: Enhancement of soil fertility		(0) 1 2 3 4 5
<b>EFFECTS ON SOCIAL AND CULTURAL CONDITIONS</b>		
Local Character: and cohesion of local communities should be and enhanced where practical.	Opinions of local communities to be assessed	(0) 1 2 3 4 5
Health and Well-being: The Activity should benefit the work force, and local communities in terms of reduction in the incidence of vector, water, and air borne diseases and generally health and well-being.	Number of People exposed to water borne disease, or lacking adequate food and shelter to be assessed	(0) 1 2 3 4 5
Women and children: Improve livelihood of women and children.	Number of women to be empowered	(0) 1 2 3 4 5
Job Creation: The activity should create jobs for local people particularly women and young people.	Number of people to be employed	(0) 1 2 3 4 5
Participation: Active participation and involvement of local communities should be encouraged (especially vulnerable and excluded sections).	Level of participation proposed	(0) 1 2 3 4 5
Access to Land: Activity should improve access to land.	Number of the poor to be assisted	(0) 1 2 3 4 5
Access to Water: Activity should improve access to water.	Number of the poor to be assisted	(0) 1 2 3 4 5
Access to Transport: Activity should improve access to transport.	Number of the poor to be assisted	1 2 3 4 5
Sanitation: Activity should improve sanitation.	Number of the poor to be assisted	(0) 1 2 3 4 5
Equity: Adverse and beneficial impacts from development should be distributed equitably and should not discriminate against any groups, especially vulnerable and excluded people.	Number of the poor to be to benefit on equitable terms	(0) 1 2 3 4 5
Vulnerability and Risk: of drought, bushfire, floods crises and conflicts and epidemics should be reduced.	Occurrence to be noted and monitored	(0) 1 2 3 4 5
<b>EFFECTS ON THE ECONOMY</b>		
Growth: The PPP should result in development that encourages strong and stable conditions of economic growth.	Economic Output to be evaluated	(0) 1 2 3 4 5
Use of local materials and services: The PPP should result in the use of raw materials and services from local industries where possible.	Description of sources	(0) 1 2 3 4 5
Local Investment of Capital: Development should encourage the local retention of capital and the development of downstream industries, utilising local raw materials, products and labour.	Description of investment strategy	(0) 1 2 3 4 5
<b>INSTITUTIONAL ISSUES</b>		

Adherence to democratic principles		(0) 1 2 3 4 5
Human Rights		(0) 1 2 3 4 5
Access to information		(0) 1 2 3 4 5
<i>Regulation/Compliance:</i> PPP should ensure best practice and compliance with environmental/industry standards and guidelines.		(0) 1 2 3 4 5

Sustainability Test

<b>Description of Programme:</b> Promote child rights, Protection and development programme		
CRITERIA – BASIC AIMS AND OBJECTIVES	INDICATORS	PERFORMANCE MEASURE
<b>EFFECTS ON NATURAL RESOURCES</b>		
Protected Areas and Wildlife: should be conserved, and these resources should be enhanced where practical.	Sensitive areas shown on maps	(0) 1 2 3 4 5
Biodiversity: protection and conservation of biodiversity		
Degraded Land: Areas vulnerable to degradation should be avoided, and already degraded land should be enhanced.	Vulnerable areas shown on maps	(0) 1 2 3 4 5
Desertification: Reduce the incidence of desertification		(0) 1 2 3 4 5
Energy: The Activity should encourage efficient energy use, and maximize use of renewable rather than fossil fuels.	Quantity and type of fuel/energy to be identified	(0) 1 2 3 4 5
Pollution: Discharges of pollutants and waste products to the atmosphere, water and land should be avoided or minimised.	Quantity /type of pollutants and waste to be identified	(0) 1 2 3 4 5
Use of Raw Materials: All raw materials should be used with maximum efficiency, and recycled where practical.	Quantity and type of materials	(0) 1 2 3 4 5
Rivers and Water bodies: should retain their natural character and reduce water stresses especially those affecting internationally shared basins	Minimum flows/ water levels to be set	(0) 1 2 3 4 5
Sea level rise: Reduce vulnerability to sea level rise (eg high temperature rise, emissions, etc.)		(0) 1 2 3 4 5
Food security: Enhancement of soil fertility		(0) 1 2 3 4 5
<b>EFFECTS ON SOCIAL AND CULTURAL CONDITIONS</b>		
Local Character: and cohesion of local communities should be and enhanced where practical.	Opinions of local communities to be assessed	(0) 1 2 3 4 5
Health and Well-being: The Activity should benefit the work force, and local communities in terms of reduction in the incidence of vector, water, and air borne diseases and generally health and well-being.	Number of People exposed to water borne disease, or lacking adequate food and shelter to be assessed	(0) 1 2 3 4 5
Women and children: Improve livelihood of women and children.	Number of women to be empowered	(0) 1 2 3 4 5
Job Creation: The activity should create jobs for local people particularly women and young people.	Number of people to be employed	(0) 1 2 3 4 5
Participation: Active participation and involvement of local communities should be encouraged (especially vulnerable and excluded sections).	Level of participation proposed	(0) 1 2 3 4 5

Access to Land: Activity should improve access to land.	Number of the poor to be assisted	(0) 1 2 3 4 5
Access to Water: Activity should improve access to water.	Number of the poor to be assisted	(0) 1 2 3 4 5
Access to Transport: Activity should improve access to transport.	Number of the poor to be assisted	(0) 1 2 3 4 5
Sanitation: Activity should improve sanitation.	Number of the poor to be assisted	(0) 1 2 3 4 5
Equity: Adverse and beneficial impacts from development should be distributed equitably and should not discriminate against any groups, especially vulnerable and excluded people.	Number of the poor to be to benefit on equitable terms	(0) 1 2 3 4 5
Vulnerability and Risk: of drought, bushfire, floods crises and conflicts and epidemics should be reduced.	Occurrence to be noted and monitored	(0) 1 2 3 4 5
<b>EFFECTS ON THE ECONOMY</b>		
Growth: The PPP should result in development that encourages strong and stable conditions of economic growth.	Economic Output to be evaluated	(0) 1 2 3 4 5
Use of local materials and services: The PPP should result in the use of raw materials and services from local industries where possible.	Description of sources	(0) 1 2 3 4 5
Local Investment of Capital: Development should encourage the local retention of capital and the development of downstream industries, utilising local raw materials, products and labour.	Description of investment strategy	(0) 1 2 3 4 5
<b>INSTITUTIONAL ISSUES</b>		
Adherence to democratic principles		(0) 1 2 3 4 5
Human Rights		(0) 1 2 3 4 5
Access to information		(0) 1 2 3 4 5
Regulation/Compliance: PPP should ensure best practice and compliance with environmental/industry standards and guidelines.		(0) 1 2 3 4 5

Sustainability Test

Sustainability Test

<b>Description of Programme: Programme to create enabling environment for active participation and equal inclusion of PWDs especially women in socio-economic development</b>		
CRITERIA – BASIC AIMS AND OBJECTIVES	INDICATORS	PERFORMANCE MEASURE
<b>EFFECTS ON NATURAL RESOURCES</b>		
Protected Areas and Wildlife: should be conserved, and these resources should be enhanced where practical.	Sensitive areas shown on maps	(0) 1 2 3 4 5
Biodiversity: protection and conservation of biodiversity		(0) 1 2 3 4 5
Degraded Land: Areas vulnerable to degradation should be avoided, and already degraded land should be enhanced.	Vulnerable areas shown on maps	(0) 1 2 3 4 5
Desertification: Reduce the incidence of desertification		(0) 1 2 3 4 5
Energy: The Activity should encourage efficient energy use, and maximize use of renewable rather than fossil fuels.	Quantity and type of fuel/energy to be identified	(0) 1 2 3 4 5