

**SOUTH TONGU DISTRICT ASSEMBLY**



**2026 ANNUAL ACTION PLAN**

NOVEMBER 2025

## CHAPTER ONE

### EXECUTIVE SUMMARY

#### I.1 BACKGROUND, DISTRICT PROFILE/CURRENT SITUATION

The Decentralization process in Ghana makes the Municipal/District Assemblies the pivot of development activities in the country. With the coming into force of 1992 Fourth Republican Constitution of Ghana, the New Local Government System Act 1993, (Act 462), the National Development Planning Commission Act 1994, (Act 479) and the Development Planning Systems Act 1994, (Act 480). The Assemblies in Ghana have been tasked to ensure the overall development of the areas under their jurisdiction through the formulation and execution of Development Plans and programmes and designing strategies for the mobilization and prudent utilization of revenue. Thus, the Assemblies have become the pivot of development activities from the bottom.

In line with this, the South Tongu District Assembly has taken the necessary steps to formulate this Annual Action Plan for 2026. This is meant to form the basis for the implementation of programmes aimed at reducing poverty and laying the foundation for a Holistic Sustainable Socioeconomic Development in the District.

#### PROCESS OF PREPARING AND ADOPTING THE ANNUAL PLAN

This plan is an extraction of programmes and projects from the **District Medium Term Development Plan for 2026-2029**. It essentially contains programmes and projects planned for 2026 and those rolled over from the 2025 Annual Action Plan for implementation due to the Assembly's inability to fully complete them. Their implementation was however deemed necessary for meeting key targets set by all stakeholders in the Assembly. It also contains new priority programmes for 2026. The Annual Action Plan was prepared within the Policy framework of the, **“Resetting-Ghana Agenda: Creating Jobs, Ensuring Accountability, and Promoting Shared Prosperity”**, which is founded on the **President Coordinated Program for Economic and Social Development** to address the prioritized needs of the

## 2026 COMPOSITE ANNUAL ACTION PLAN: SOUTH DISTRICT ASSEMBLY

people in 2026. The prioritized interventions are aligned with the Thematic Areas of the **President’s Coordinated Programme of Economic and Social Development Policies**

### Vision

South Tongu District Assembly has a vision to be a District with best practices in local governance, socio-economic development, and natural resource management.

### Mission

The mission of South Tongu District Assembly is to improve the quality of life of the people through effective mobilisation of the human, material, and financial resources for accelerated socio-economic development and creation of enabling environment for private sector participation.

### Location and physical characteristics

South Tongu District Assembly is one of the Eighteen (18) and one of the two hundred and sixty-One (261) Administrative Districts of the Volta Region and Ghana respectively. South Tongu District was created in 1989 with a Legislative Instrument 1466 and attained its District status in 2024 awaiting official inauguration. The District capital, Sogakope is located **84Km** South of the Regional Capital, Ho and **114km** east of the National Capital, Accra. District has a total land surface area of **665 km<sup>2</sup>**, which is 6.9% of the Regional and 0.27% of the National land surface areas. It is located within Latitudes 6°10' and 5°45' North and Longitudes 30°30' and 0°45' east and lies at the Southern part of the Volta Region. Its bordering Districts is presented in “South Tongu District Map”.



Its unique location on the ECOWAS trunk road gives it a strategic advantage for trade and transportation, facilitating movement of goods and people within the region. This key transit

## 2026 COMPOSITE ANNUAL ACTION PLAN: SOUTH DISTRICT ASSEMBLY

route traverses the District from Tema to Aflao, making South Tongu a significant point on the West African highway network.

### **Governance**

#### **a) Administrative Structures**

The District Assembly is organized in accordance with the dictates of the Legislative Instrument (L.I 1961) and the Local Governance Act, 2016 (Act, 936). The General Assembly is the Highest Decision Making Body of the District and is made up 40 Elected Members representing Electoral Areas and 18 Government Appointees in addition to the District Chief Executive and the Member of Parliament for the South Tongu Constituency but without Voting Rights. The General Assembly has a total of Eight Female Members; three of the Members are elected and five appointed.

The Assembly works through its two main Committees; Executive Committee and Public Relations and Complains Committee. The District Chief Executive and the Presiding Member respectively head these Committees. The Executive Committee has Five Statutory Sub-committees including Development Planning, Social Services, Works, Justice and Security and Finance and Administration. The various Sub-Committees submit their recommendations to the Executive Committee for consideration. These recommendations are further submitted to the General House for approval or ratification. The various Departments headed by the District Co-ordinating Director who is also the Secretary to the Assembly, then implement decisions taken at the General House. The Assembly meets at least three times a year. In the absence of the Assembly, the Executive Committee has the mandate to take decisions on behalf of the Assembly. To ensure good governance, the General Assembly headed by the Presiding Member, oversees the activities of the Executive Committee headed by the District Chief Executive. The Presiding Member is provided with an office in the main Administration Block to enable him/her perform his/her duties effectively.

The Administrative wing of the Assembly is responsible for implementing policies and decisions of the Assembly and the Central Government. The District Co-ordinating Director, heads the office of the District Administration. The Coordinating Directorate consists of twelve established Departments namely: Central Administration, Physical Planning, Human Resource, Statics, Works, Social Welfare and Community Development, Education, Youth and Sports, Agriculture, Trade and Industry, Forestry, Wildlife and Conservation, Health and Disaster Prevention. One other important Department yet to be established is Transport. The Central Administration, which provides secretarial and managerial services to the General Assembly and the other Departments, has the full complement of all Heads of Units. The Units are Finance, Budgeting, Planning, Environmental Health, Sanitation, and Procurement.

All the key officers are well accommodated and have their respective offices. However, there is the need to resource some of the officers with equipment such as computers for effective discharge of their duties. One major problem facing the Decentralized Departments is lack of

## 2026 COMPOSITE ANNUAL ACTION PLAN: SOUTH DISTRICT ASSEMBLY

means of transport to enable them undertake field visit. This has the tendency to hinder the effective implementation of planned activities and execute the monitoring and evaluation of it. The logistical challenge therefore needs to be addressed through adequate budgetary provisions to acquire sufficient logistics.

### **b) Traditional Administration and Culture**

The District has five traditional areas namely Agave, Fievie, Tefle, Sokpoe and Vume of which Agave is considered the largest. Each traditional area is autonomous with its own paramount chief, queen and festival. The people of Agave celebrate an annual Dzawuwuza festival during the month of August. Two months prior to the festival, picking of fresh clams/oysters (adodi) is forbidden. Tortsogbeza by the people of Sokpoe is a biennial event held during Easter in remembrance of the historical crossing of the Volta River by their ancestors. Kporleza, literally meaning (arresting the tiger) is usually celebrated in December by the people of Fievie while Afenorto, which means 'home coming', is celebrated by the people of Tefle during the month of December. The festivals bring home all indigenes residing outside their localities to connect with their extended families, promote unity and mobilize resources toward self-help development projects. Ewes dominate the ethnic groups in the District (96.1%), followed by the Ga-Dangme (1.7%) and Akans (1.1%) with an insignificant presence of other ethnic groups (1.1%). Christians form majority (75.7%) of the population, followed by Traditionalist (12.0%) and Muslims (2.0%). Those who do not profess any religion form 9.4 percent and those who practice other religions constitute 0.9 percent. There is peaceful co-existence among the religious groups in the District.

### **c) Peace and security**

The Security situation in the District is generally peaceful; however, there exists pockets of conflicts with respect to Chieftaincies in areas of Fievie and Agave. There are also pockets of potential land disputes, which require urgent management before they escalate.

The security in the District is managed by the District Security Council (DISEC) of the Assembly comprising the District Chief Executive as its Chairperson and Security Personnel from the Ghana Police Service- Sogakope Divisional Command, District Command, the National Investigation Bureau (NIB), Immigration Service, Fire Services, Army Command and Customs. These Security Services are well established in the District and readily render their services when needed. In addition to above. The traditional set-up also helps to maintain law and order in the District. They serve as the first point of call to residents on domestic disputes and offer alternative conflict resolution services to people who request for these services. They are also often being major contact persons for security issues involving land.

### **Demographic Characteristics of the District**

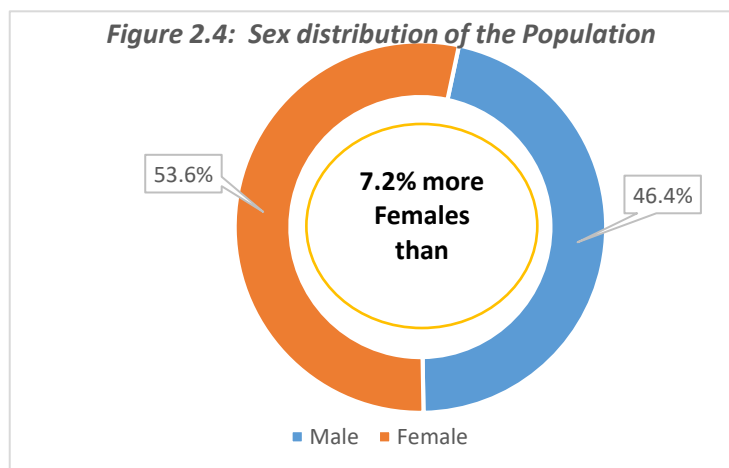
The human- centered development concept is one of the distinct features of the new planning system. It demands the analysis of the basic demographic characteristics like population size and growth rate, population density, household characteristics, religious compositions, age and sex

## 2026 COMPOSITE ANNUAL ACTION PLAN: SOUTH DISTRICT ASSEMBLY

composition, occupation distribution, rural-urban split, dependency ratio and the distribution in space with a view of establishing their needs and ability to contribute towards the achievement of stated goals.

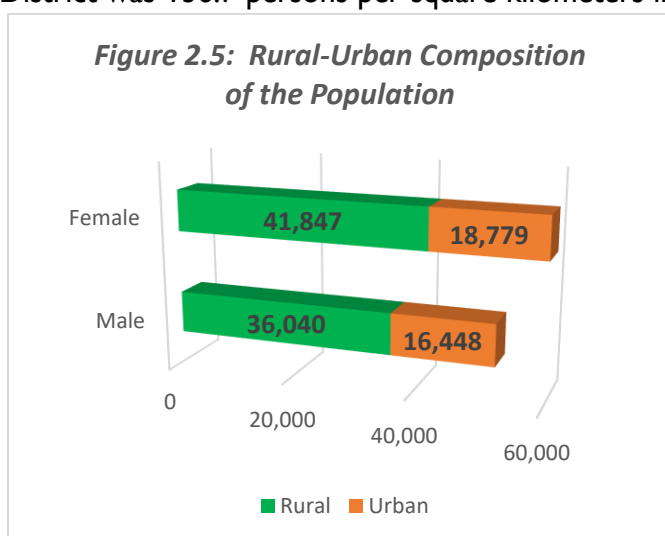
### Population Size.

The South Tongu District had a total population of 113,114 in the 2021 PHC from a figure of 87,950 in the 2010 PHC. The projected population figure for 2025 is 118,825. The District population represents 6.8 percent of the regional population (1,659,040). Females constitute 53.6 percent while males constitute 46.4 percent and the population growth rate approximately stood at 2.3%. The District has a total household of about 31,600 with an average household size of 3.5.



### District Population Density/Rural-Urban Split

The population density of the South Tongu District was 136.7 persons per square kilometers in 2021 (water bodies excluded). The density increased to 170.2 persons per square kilometers in 2021. This is significantly higher than the national figure of 129 persons per square kilometers and lower than the regional figure of 174.6 persons per square kilometers respectively. Localities with population 5000 or more in Ghana are classified as urban. The South Tongu District therefore has about **68.9%** of its population living in rural areas compared with the regional figures of 57.9 percent and the national figure of 43.3%. The remaining **31.1%** percent forms the urban population of the District.



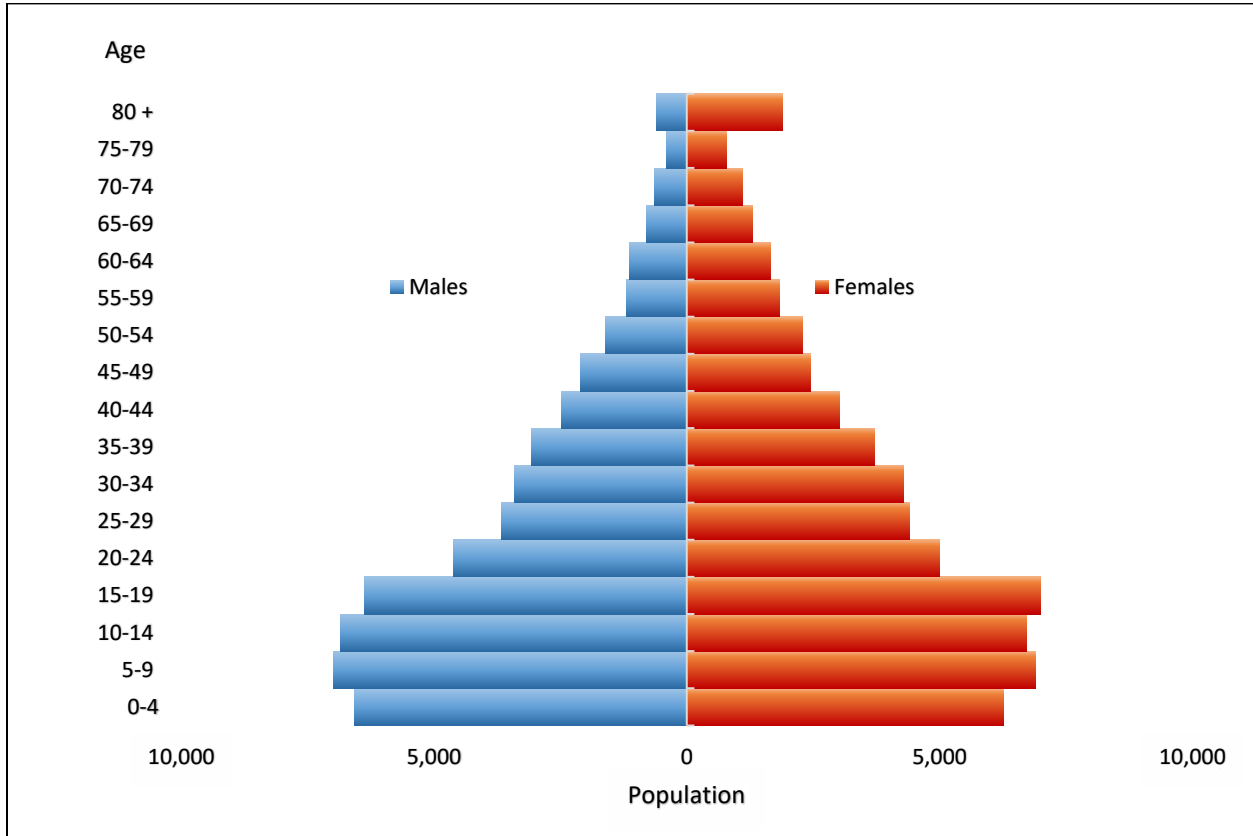
### Population Pyramid

A population pyramid is a graphical representation of the age-sex composition of a population and the levels of fertility, mortality and migration influence its shape. The broadness of the base is determined by the level of fertility, while the shape is determined by mortality and to some

## 2026 COMPOSITE ANNUAL ACTION PLAN: SOUTH DISTRICT ASSEMBLY

extent migration. The population of the District is 113,114 of which 52,488 representing 46.4 percent are males and 60,626 representing 53.6 percent are females. For the age groups 10-19 years there are more males than females. The high proportion of the populations aged 0-9 years indicates that the population in the District has the potential to grow for a considerable number of years. This has implications for the economic development of the District. Therefore, there is the need for the Assembly to embark on deliberate policies that target future generation in areas of education, health, accommodation etc.

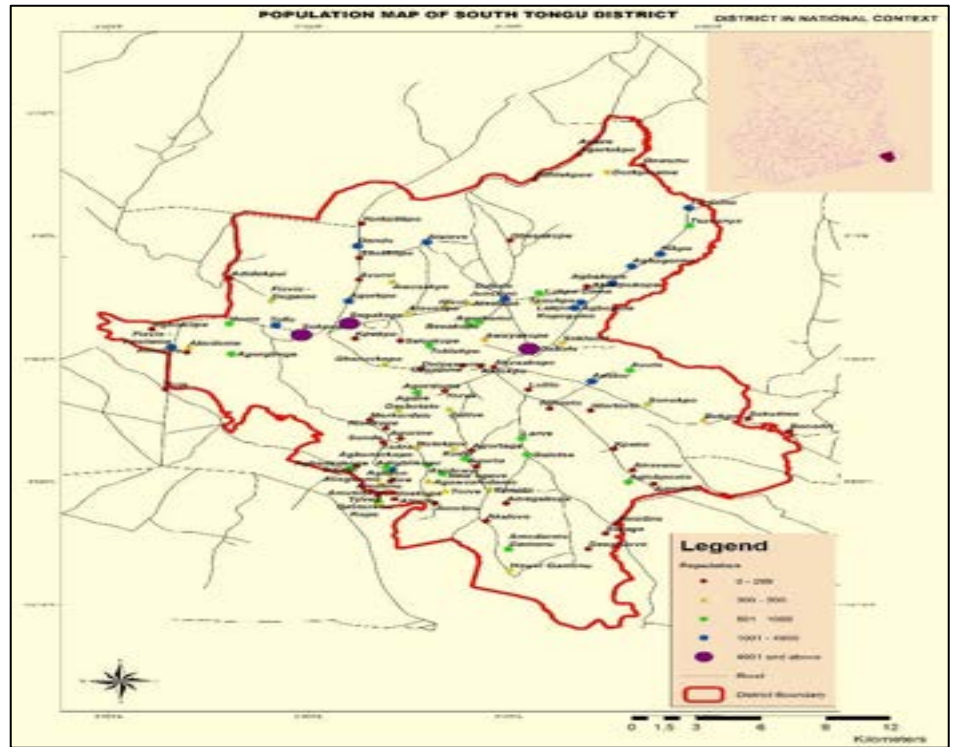
**Figure 2.7: Population pyramid (South Tongu District), by age and sex, 2021**



### Spatial Distribution of Population

The spatial distribution of population in the South Tongu District, according to the 2021 Population and Housing Census (PHC), shows a largely rural population with higher densities in areas along major roads and with good road networks such as Sogakope, Dabala, Sokpoe, Tefle, Vume, Agorkpo, Adutor, Kpotame and Agbakope. Conversely, the eastern part of the District is sparsely populated with poor road networks.

Figure 2.12: Spatial Distribution of South Tongu District.



### Distribution of Infrastructure and Services

The facilities providing services to the population are located within space. The following presents the spatial distribution of facilities in the various settlements within the District.

### Education Sector of the District

The improvement of the Educational sector is overriding to the District's development as it is the main determinant of the nature and caliber of its human resources needed for development and for whom development is fashioned. The District Directorate of Education, Youth and Sport manage the Sector, which is yet to be decentralized.

The District has a diverse educational landscape, with schools ranging from kindergarten to tertiary levels. Key areas of focus include pre-school, primary, junior high, senior high and vocational/technical education. The District faces Threats like inadequate furniture, particularly at the basic education level, and varying levels of trained teachers across different educational tiers.

## 2026 COMPOSITE ANNUAL ACTION PLAN: SOUTH DISTRICT ASSEMBLY

In 2024, the District had 128 Pre-schools, 126 Primary, 91 JHS, 3 SHS, and 2 TVET Schools with a population of 7,413 pre-school pupils, 18,924 primary school pupils, 7,017 Junior High School, 6,383 Secondary students and 1540 for TVET Schools respectively. While the girl-child enrollment at the Pre-school level was 49.8%, it decreased slightly to 49.6% at the Primary level and 49.5% in Junior High School level. Pupil-Teacher ratios were relatively lower than the targeted figures, with pre-school at 26:1, primary at 24:1, and JHS at 12:1. Figure 2.20: Educational map of South Tongu District



### Health Service Delivery

Health is an important sector of the District Social Services delivery System. This section is therefore devoted to presenting an analysis of the Health Sector Situation in the District including Staff Strength, Health Insurance Service, OPD Attendance, Trend OPD Attendance by gender, Causes of Specific Death Rate for 2024, Malaria Control, Trend of Admissions by Insured and Non-Insured for 2022-2024, etc.

#### Staff strength

The District has been plagued with inadequacy of critical staff over the years. Notable among categories affected are Doctors, midwives, Physician Assistants, staff nurses, laboratory technologists and assistants. The inadequacy of these critical staff especially the midwives has resulted in a heavy burden on the few who are above 50 years of age thereby jeopardizing the efforts of reducing maternal and infant deaths. Currently, there are 4 Physician Assistants manning the whole District. Enrolled, Community Health Nurses and Midwives are managing other health centers. Table 2.18 contains the staff strength of the District Health Directorate while Table 1.57 presents the Health Staff categorized by area council Councils and Figure 2.25 contains the map of Health Facilities.

#### Health Staff of District

Category	No. at post	No. on study leave	No required	Staffing gap

## 2026 COMPOSITE ANNUAL ACTION PLAN: SOUTH DISTRICT ASSEMBLY

Medical Officers	7	3	14	7
Pharmacists	2	0	5	3
Physician Assistants	4	0	8	4
Lab Technologist	12	0	14	2
Lab. Technicians	2	0	19	17
Lab. Assistants	2	0	14	12
Optometrist	0	0	1	1
D. D.N. S	2	0	3	1
Midwives	76	0	80	4
Technical officer	23	3	35	12
Nurses (Gen)	94	10	157	63
Community Health Nurses	80	12	100	20
Supt Enrolled Nurses/Enrolled Nurses	100	23	101	1
Health Assistants	6	0	11	5
Other Permanent Staff	120	1	153	33
Temporary Staff	66	3	69	3
<b>Total</b>	<b>596</b>	<b>55</b>	<b>783</b>	<b>187</b>

### 2.19: Distribution of critical cadre as at 2024

Health Facility	No. of Doctors	No. of Midwives	No. of CHNs	No. of ENs	Professionals Nurses
District Health Directorate	0	25	63	51	28
District Hospital	10	45	5	63	91
Richard Novati Hospital	9	31	12	71	84
<b>Total</b>	<b>19</b>	<b>101</b>	<b>80</b>	<b>185</b>	<b>203</b>

### 2.20: District patient to cadre ratio Jan-Dec 2022-2024

Cadre	2022	2023	2024

## 2026 COMPOSITE ANNUAL ACTION PLAN: SOUTH DISTRICT ASSEMBLY

	No.	Patient Ratio	No.	Patient Ratio	No.	Patient Ratio
Midwives	103	1:269	102	1:278	101	1:280
Nurses	485	1:238	434	1:272	468	1:251
Doctors	19	1:6078	19	1:5896	19	1:5876

### Health Service Organization and Infrastructure

To ensure effective Health Service delivery, the District is divided into 6 Sub-Districts as mentioned above. Health service in the District is organized in 3-level service delivery structure.

The first level of service delivery is the Community level (19 CHPS Compounds), the second level is health centers (Sub-District), and the third level is the hospitals.

District Hospital & Richard Novati Catholic Hospital serves as referral points for the Health Centers and CHPS Zones in the District.

The District Health Directorate plays an oversight role of the entire health service delivery.

The facilities are fairly served in terms of number of health facilities but some facilities do not

have critical staff and essential equipment. In all, the District have 30 health facilities made up of a government hospital, 2 CHAG facilities, four Health Centres, 19 CHPS compound, PPAG, Private Maternity Home, and 2 School Infirmaries. Figure 2.25: The map of Health Facilities.



### Trade, Commerce and Industry

The major activities with respect to commerce, trade and industry include trading services, agriculture, small-scale processing and manufacturing. Trading is mainly concentrated in general goods, provisions and textiles. There is an increasing number of hawkers on the streets (Sogakope-Accra road and Adidome-road), erection of kiosk and numerous “table top” activities.

## **2026 COMPOSITE ANNUAL ACTION PLAN: SOUTH DISTRICT ASSEMBLY**

Sogakope and Dabala Township are the main commercial centers of the District. These activities call for a review of the District's Waste management programmes. The two main Markets which witnesses people commuting from far and near such as Accra on periodic market days, which occurs twice respectively in a week for various forms of trading activities. Commodities traded in are principally foodstuffs, Fish and general goods including manufactured goods.

The economic activities conducted in urban settings are scattered throughout the towns and do not conform to any proper land use. This practice has serious environmental implications in terms of pollution and beauty of the Sogakope Township and other major settlements. This trend therefore has to be reversed through effective zoning and planning to avoid slum development.

### **Transportation Network**

Physical access to services such as health, education, postal and telecommunication, agriculture extension, banking, police and marketing Centres are mainly by road. The ECOWAS highway from Aflao passes through the District to Tema. Untarred feeder roads link settlements in the Agave-Afedume and Larve Area Councils. However, some communities like Aductor, Avuto, Agbogbla and their surrounding communities are linked to Dabala by a tarred feeder road of 19km. Another tarred road of about 45km connects Dabala Junction in the District to Anloga in the Anloga District. Most feeder roads become un-motorable during the rainy seasons which hinder easy movement of goods and services, slow down economic activity and reduce people's income. Lake transport though important in the District, has not received much attention and therefore poorly developed. Local canoes are mostly used to transport goods and people across the rivers and lagoons. Wind and rainstorms sometimes render water transport dangerous.

### **Financial Sector**

The financial sector in South Tongu District is relatively small, with a focus on micro, small, and medium enterprises (MSMEs). While there are commercial banks like GCB Bank and Agricultural Development Bank, as well as the Agave Rural Bank, the District also relies on non-bank financial institutions like micro savings and loans companies to serve its diverse economic activities.

### **Communication and Energy Sectors**

The communication sector in the South Tongu District, like many developing areas, is primarily focused on mobile telecommunications services. Four main providers, MTN, Vodafone, AirtelTigo, and Glo, offer mobile services. Additionally, there are fixed network operators like MTN, Vodafone, and AirtelTigo. The District also demonstrates a growing awareness and adoption of ICT tools, particularly in education, with schools utilizing digital resources and online platforms.

## 2026 COMPOSITE ANNUAL ACTION PLAN: SOUTH DISTRICT ASSEMBLY

In terms of energy, the District is connected to the national electricity grid, covering about 90% of the entire District with ongoing efforts to extend power to remaining communities. The District faces Threats with power outages, impacting local businesses.

### **Road Network Distribution in the District.**

The District has a road network of approximately 250km. This includes both first and second-class roads connecting major communities within the District and to larger urban centers like Accra, Aflao, HO and Anloga. A significant portion of the District's road network is comprised of feeder roads, particularly in areas like Agave-Afedume and Larve, which are crucial for connecting farming areas to market centers. While some roads are paved, others, especially feeder roads, are unpaved and suffer from poor conditions during the rainy season, hindering transportation. Figure 2.38: Map for Road Distribution



### **Economy Development.**

#### **District Economy**

The District's economy is primarily agrarian, with agriculture employing a significant portion of the workforce. The District also has potential for tourism, Ceramics, petty trading and other sectors like oil and gas, though these are still in early stages of development.

#### **Internally Generated Funds (IGF)**

Among the funding sources, IGF is the only source that is directly under the control of the Assembly. Its annual growth depends on efforts made by the Assembly to harness the existing strengths or create new strengths. The size of the IGF also determines how much of other external funds may be allocated or transferred to the Assembly. Regrettably, this contributed only 20.4% of the Total Revenue for past Three years. The major sources of IGF are rates, fees, fines, licenses, lands, rents and investments. These funds are mobilized through daily collection by revenue staff and private collectors. One major potential, which holds greater prospects for improvement in the IGF, is Property Rate. This rate when effectively collected could triple the growth of the IGF within a year. With the property valuation register and DIRef system, the

## 2026 COMPOSITE ANNUAL ACTION PLAN: SOUTH DISTRICT ASSEMBLY

Assembly can now roll out measures to effectively and aggressively harness this potential in order to provide the needed funds to increase its service delivery.

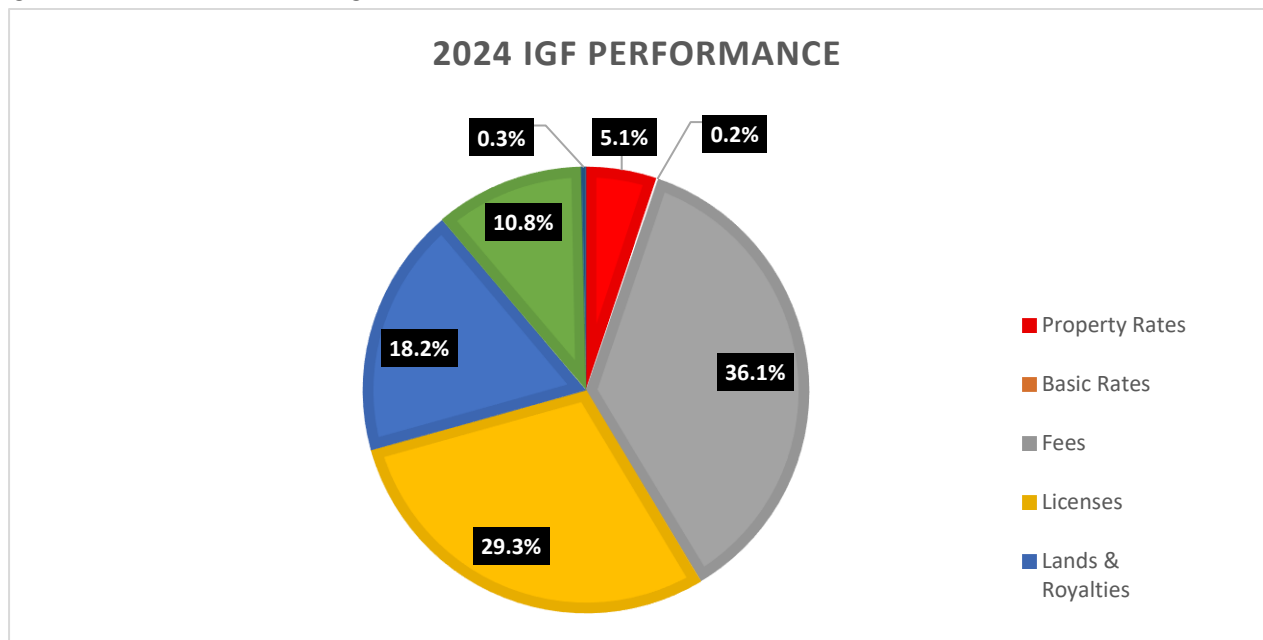
The major threats associated with the mobilization include the non-reshuffling of revenue collectors (hence the need to reshuffle revenue staff), inadequacy of collectors, lack of logistics and the people unwillingness to pay rates. This situations could however be improved. In the quest to achieve the economic security goals, efforts and resources should be put in place to improve the IGF. A practical example could be channeling some budget allocation to provide adequate logistics, recruit and train staff, supervise or monitor revenue collection, provide incentive for revenue collection or explore the option of outsourcing revenue. This will not only improve the current IGF status but will also create employment opportunities for the youth. The details are indicated in the table 2.5

Table 2.5: Internal Revenue Generation

Revenue Item	Budget (2024)	Actual (2024)	Performance on Budget (%)	Performance Contributed (%)
Property Rates	200,000.00	40,524.30	20.3	5.1
Basic Rates	5,000.00	1,306.50	26.1	0.2
Fees	290,000.00	287,481.30	99.1	36.1
Licenses	407,400.00	232,899.73	57.2	29.3
Lands & Royalties	405,400.00	144,551.76	35.7	18.2
Rents	78,600.00	86,207.30	109.7	10.8
Fines	5,000.00	2,523.00	50.5	0.3
<b>Total</b>	<b>1,391,400.00</b>	<b>795,493.89</b>	<b>57.2</b>	<b>100</b>

Source: District Budget Unit, 2025

Figure 2.19: Internal revenue generation



### **Economic Development**

The concept of Local Economic Development (LED) as a model of Local Development is gradually gaining recognition in Ghana. The major thrust of the District in promoting LED is to embark on measures aimed at identifying the key stakeholders through whom partnerships could be fostered to promote effective utilization of the identified resources for effective exploitation, which could lead to large-scale job creation for improved living conditions of the people. It is also to identify the immediate bottlenecks to current economic growth and design measures for improvement. To this end, a number of measures have been implemented to enhance Local Economic Development. These include the formation of MSME committee, building the capacity of SMEs and identification of Co-operative Societies among farmers and artisans for accessing credit for the expansion of their businesses. A number of these Co-operative Societies were assisted to access financial support.

The Business Advisory Centre/Ghana Enterprise Agency is also established in the District and is currently providing skills training and business development services to Micro and Small Enterprises. The Assembly BAC/GEA in the plan period under review has organized number of skills enhancement training programmes in the areas of hairdressing, beautician, tailoring, agriculture value chain actors among others. The impact of these training programmes on the beneficiaries is the improved skills they exhibit in their various professions. The above notwithstanding the following remain as critical threats for Local Economic Development:-

- ✓ Limited resources in terms of human capital and finance. The District lacks skilled personnel in the various trades who can regularly visit and help streamline the operation of business even after skills training programmes.
- ✓ The efforts at providing financial support directly to enhance local economic development annually is being hindered due to deductions from its allocation of the District Assemblies Common Fund by the Fund Administrator. This affects actual releases to the District there by reducing the amount of funds available to implement planned activities.
- ✓ In addition, the District Department of Co-operatives charged with the responsibility of coordinating local businesses is poorly funded and hence incapable of executing this role effectively.
- ✓ At community level, most business holders are largely unwilling to participate in activities aimed at promoting local economic development due to inadequate awareness.

These shortfalls will be addressed in the next Medium Term Plan through the prioritization of Local Economic Development issues and investing in them.

### **Agriculture in the South Tongu District**

Agriculture is the backbone of the District's economy, employing a significant portion of the workforce and contributing substantially to the District's overall development. The sector's impact is multifaceted, encompassing food security, income generation, and even international trade opportunities.

## 2026 COMPOSITE ANNUAL ACTION PLAN: SOUTH DISTRICT ASSEMBLY

In the District, 23,418 hectares of the total land area of 45,850 hectares are currently under cultivation. This means that almost half of the District's land, specifically 49.8% is fallow. The District is known for its fertile soil and is considered to have significant potential for agricultural development, particularly in rice and sugarcane production. As an agrarian economy, the District agriculture employs about 46.7 percent of the economically active population.

In the case of livestock rearing, the proportion of households engaged in this farming activity is higher in the urban areas than in rural localities. Major livestock reared in the District include chicken, cattle, goat, sheep, piggery, guinea fowl and duck. Cattle rearing dominates livestock activities in the District, which may be due to absence of tsetse fly, short grasses and low rainfall pattern. Most of the animals are reared on subsistence basis except cattle, poultry and few others, which are undertaken for commercial purposes.

Fishing is of special interest because the District is endowed with numerous water bodies including the Volta River, creeks and lagoons, which support the fishing industry. The Volta River, which flows through the District, is endowed with tilapia and freshwater clam (Adodi). In addition, creeks and lagoons serve as good breeding grounds for tilapia, shrimps and mudfishes. Fish farming including clams is undertaken at sections of the Volta River and harvested for sale to buyers within and outside (Accra, Keta and Aflao etc.) the District. The data analysis by sex shows that the agriculture sector employs 53.9 percent males and 41.3 percent females. The Key Aspects of Agriculture in District include the following:

**Dominant Sector:** Agriculture employs a large percentage of the economically active population, with 46.7% of the workforce directly involved. A large proportion of households, particularly in rural areas (96.4%), are engaged in agriculture. Whereas about 73.6 percent in the urban areas engaged in agriculture

**Diverse Activities:** The sector includes crop production, animal husbandry, and fishing/aquaculture.

**Major Crops:** Key crops include cassava, maize, beans, okro, pepper, groundnut, garden egg, sugarcane, rice, tomatoes, and sweet potatoes. Rice cultivation, especially in areas like Fievie and Kpenu, is commercially significant, with pepper/chilli farming being a major cash crop in several communities such as Agbakope, Agbagorme, Hikpo, Sasekope, Dendo and Tsavanya.

**Livestock and Fishing:** Cattle rearing is prominent, possibly due to the local environment, and fishing benefits from the District's water bodies, including the Volta River.

**Commercial Activities:** Rice cultivation and pepper/chilli farming are notable commercial activities. There are also large-scale rice and okro production companies in the area.

**Potential for Growth:** The District has potential for large-scale rice and sugarcane production.

**International Trade:** The Agriculture Department supports chili farmers in cultivating for the export market.

**Irrigation Potential:** Communities close to the Volta Lake and other water bodies, have potential for irrigation projects to improve crop yields and farmer incomes.

Figure 2.20: Agriculture Strengths



**a. Agriculture Impact on the District Economic Development:**

There exist numerous agriculture impact on the District Economic Development among them include the following:

**Food Security:** Agriculture ensures food availability for the local population.

**Income Generation:** Farming provides livelihoods and income for a large portion of the population.

**Poverty Reduction:** By providing employment and income, agriculture contributes to poverty reduction.

**Export Opportunities:** The focus on cash crops like chili pepper has opened up export possibilities, boosting the District's economy.

**Infrastructure Development:** Agriculture-related activities can drive the development of infrastructure like roads and irrigation systems.

**Local Economic Development:** The South Tongu District Assembly is actively promoting Local Economic Development (LED) initiatives to further enhance the sector's contribution to the economy.

**b. Threats and Opportunities:**

**Reliance on Rainfall:** Despite the potential for irrigation, many farmers still rely on rainfall, which can lead to crop failure during dry spells.

**Limited Access to Markets:** Farmers may face threats in accessing markets and getting fair prices for their produce.

**Need for Modernization:** Adopting modern farming techniques and technologies can further improve productivity.

**Climate Change:** Climate change impacts, such as changing rainfall patterns, pose a threat to agricultural production.

**Collaboration and Partnerships:** The District Assembly and other stakeholders are working to create partnerships with investors and development partners to further develop the sector. In conclusion, agriculture in South Tongu District is a vital economic driver, providing food, income, and employment opportunities. While Threats remain, the District is actively working to harness its agricultural potential and ensure sustainable development.

#### **2.3.6.1.4 Employment Status of the District**

In South Tongu District, agriculture is the primary employment sector, with approximately 46.7% of the economically active population involved. Significant portions of households, 56.3%, are engaged in agriculture, particularly in rural areas. The sector includes crop production, animal husbandry, and fishery/aquaculture. While agriculture dominates, a large percentage of the workforce in the District, like many others in the region, are self-employed without employees, which can present threats for economic growth. The key aspects of employment sectors in the District economy include the following:

**Agriculture:** Agriculture is the leading employment sector in District, with 78.3% of households involved. The vast majority of agricultural activity occurs in rural areas, with 96.4% of agricultural households residing there. In terms of crop production, a large percentage of households (90.9%) in rural areas are engaged in crop production.

**Self-Employed Workforce:** A large percentage of the economically active population is self-employed without employees, which can lead to threats in tax mobilization and social security.

**Government and other sectors:** Government and others (employees) employ a small percentage of the workforce.

It is important to state that a significant portion of the population (32.4%) in District lives in multidimensional poverty. While the unemployment rate remain a challenge, the District is actively working to create employment opportunities for the unemployed workforce.

#### **2.3.6.1.5 Business/private sector development**

The District is actively working to foster business and private sector development through various initiatives. The District Assembly is focused on creating an enabling environment for private sector participation, aiming to improve the quality of life for residents by mobilizing resources and promoting economic growth. A recent South Tongu Business & Investment Forum highlighted the District's potential and encouraged partnerships for sustainable development. Some measures/strategies undertaken by the Assembly in promoting private sector participation include:

**Creating an Enabling Environment:** The District Assembly is committed to creating an environment that attracts investment and supports private sector growth. This includes streamlining

## 2026 COMPOSITE ANNUAL ACTION PLAN: SOUTH DISTRICT ASSEMBLY

processes, providing support services, and fostering collaboration between public and private entities. The District Assembly has a vision to be one of the best managed in Ghana, which includes a focus on economic development.

*Investment Forums and Initiatives:* The first South Tongu Business & Investment Forum was held, bringing together various stakeholders to explore investment opportunities. The forum aimed to attract investors from the diaspora and other regions to contribute to the District's development. The event highlighted the District's potential in areas like agriculture, tourism, and digital infrastructure.

### **2.3.6.1.5.1 Focus on Specific Sectors**

*Agriculture:* The District has a strong agricultural base, with a focus on livestock rearing, including cattle, which are a significant part of the local economy.

*Micro, Small, and Medium Enterprises (MSMEs):* The District has vibrant MSMEs involved in processing cassava, fish, soya beans, soap making, baking, and other activities.

*Digital Economy:* There are plans to develop digital infrastructure, support digital startups, and promote e-commerce.

*Healthcare:* The District is also looking to improve healthcare facilities and services through partnerships and investments.

### **2.3.6.1.5.2 Threats and Opportunities:**

The District faces Threats related to infrastructure, particularly in road networks and access to markets. However, the high population density in some areas and the presence of major markets like Dabala and Sogakope present opportunities for businesses.

The District also has a relatively young population, which presents both a challenge and an opportunity for workforce development.

In essence, the South Tongu District is actively positioning itself as a viable destination for business and investment, with a focus on sustainable development and inclusive growth.

### **2.3.6.1.5.3 Industry**

The industrial and manufacturing sector in District is primarily composed of micro, small, and medium-scale enterprises (MSMEs). These businesses are involved in various activities like cassava, fish, and soya bean processing, soap and detergent making, baking and confectionery, pottery, mat weaving, batik tie and dye, crop drying, water purification, and metal fabrication. The following key sectors dominate in the District:

*MSME Dominated:* The District's industrial landscape is largely characterized by MSMEs, highlighting a focus on localized production and processing.

*Agro-based Focus:* Many industries are linked to agriculture, processing local crops like cassava, fish, and soybeans.

## 2026 COMPOSITE ANNUAL ACTION PLAN: SOUTH DISTRICT ASSEMBLY

*Traditional Crafts:* Activities like pottery, mat weaving, and batik tie and dye showcase traditional craftsmanship.

*Limited Scale:* While diverse, the industrial sector is largely characterized by small-scale operations with potential for expansion and modernization and these include:

*Cassava Processing:* Includes the processing of cassava into various flour types for pastries.

*Palm Oil Processing:* Many processors utilize outdated methods due to a lack of modern equipment.

*Pottery:* While potential exists, the ceramics industry is not fully developed. Currently, the industrial/manufacturing sector of the District employs close to 18.1 percent of the working population. The District has a vibrant micro, small and medium scale industries which include cassava, fish and soya beans processing, soap and detergent making, baking and confectionary shops, pottery, mat weaving, crop drying, water purification and metal fabrication. A relatively high proportion of females (22.7%) than males (12.1%) engage in industrial and manufacturing sector.

The District Assembly is currently working to promote and develop MSMEs through various initiatives, including business development services. The Assembly also aims to modernize agriculture and develop an agro-based industrial economy.

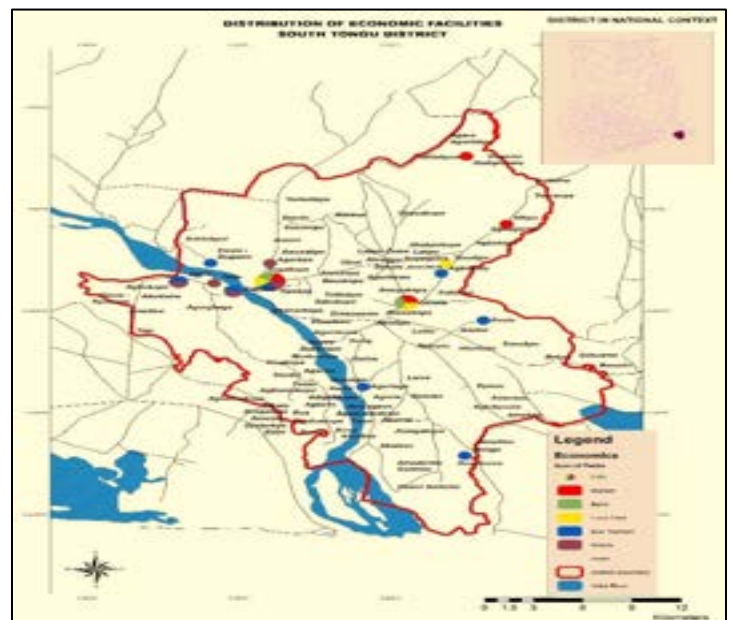
### 2.3.6.1.5.4 Service Sector

The service sector in the District encompasses a range of activities including trade, finance, hospitality, and various ancillary services provided by both public and private entities. Key areas include retail and wholesale trade facilitated by markets like Dabala and Sogakope, as well as financial services offered by commercial banks and microfinance institutions. Key Components of the Service Sector in the District include:

*Trade:* Dabala and Sogakope markets are central to trading activities, attracting both local and regional vendors. *Financial Services:* The District is served by institutions like GCB Bank, Agricultural Development Bank, and Agave Rural Bank, along with micro-savings and loan companies.

*Ancillary Services:* The private sector plays a role in providing various support services, including those related to hospitality, and other area.

The service sector employs about 35.2 percent of the working population in the District with 14.3 percent of the sector into wholesale, retail, repair of motor vehicles and motorcycles that might be due to the high commercial potential in the District. It is interesting to note that there are a higher proportion of females (36.0%) in



## 2026 COMPOSITE ANNUAL ACTION PLAN: SOUTH DISTRICT ASSEMBLY

the service sector than males (34.0%). Figure 2.21 shows the distribution of economic facilities in the district.

### Tourism Sector

Tourism is the act and process of spending time away from home in pursuit of recreation, relaxation and pleasure, while making use of the commercial provision of services. The District possesses a developing tourism sector, with Sogakope, its capital, known for its hospitality industry and river tourism. Key attractions include the Lower Volta Bridge (also known as the Sogakope Bridge) and the



annual Tortsogbeza festival in Sokpoe. The banks of the Volta River and few islands like Tuanikope can be developed into riverside resorts to attract tourists. Along the creeks that flow into the Volta River are a number of waterfowls, including the giant pelicans near Agave-Afedume. The Avu Lagoon near Adutor is home for several birds and an endangered amphibian antelope called Sitatunga. The Volta River could be harnessed to promote water sports and boost the hospitality industry in economy of the District. The District is blessed with a clean sandy beach interspersed with coconut trees at Agorta, which naturally offers a place of relaxation to tourists. Figure 2.22 shows key tourist attractions in the District.

### Business and Job Creation

The local enterprises contribute immensely to the development of District through provision of employment, food security and revenue. The District Assembly supports training and rendering of business advisory services to local entrepreneurs and artisans in production improvement, product packaging, small business management and financial record keeping. Furthermore, the District Assembly grants them land development and building permits and assist them to get financial support from Donor Partners and Government initiatives. Condition of feeder roads are also improved for easy movement of goods and services to Sogakope, Dabala and other market centers in the District. Table 2.6 shows the distribution of local enterprises within the District.

Table 2.6: Distributions of local enterprises

## 2026 COMPOSITE ANNUAL ACTION PLAN: SOUTH DISTRICT ASSEMBLY

Enterprises	Locations
<b>Farm based Enterprises</b>	
a) Poultry rearing	Sogakope, Kpotame, Sokpoe, Alavanyo, Amedormekope
b) Grasscutter rearing	Dabala, Detsawome, Fieve, Sokpoe, Tenve & Kpotame
c) Beekeeping	Kasangblekpo, Morkordze, Agorta,
d) Piggery	Adutor, Kpotame, Dendo, Sokpoe,
e) Fish farming	Tadze, Sokpoe, Tuanikope
f) Vegetables (okro, tomatoes, carrot, pepper)	Agbakope, Agbagorme, Dordoekope, Dzetorkoe, Torve, Hikpo, Sokpoe, Fieve-Dugame, Fieve-Kpodzi, Dendo, Dedo, Hlevi, Lakpo, Dorkploame, Besakope, Tordzinu, Tsavanya, Gonu
g) Maize, cassava and sweet potatoes farming	Kpotame, Dendo, Dedo, Awuyakope, Agbeve, Hlevi & Atsieve, Agorhome, Besakope, Amedormekope, Dorklpoame, Gonu
h) Sugarcane farming	Tosukpo, Agbogbla, Adutor, Avuto, Amedormekope, Gonu
i) Rice farming	Fieve, Agbakope, Dalive-Torzikpota, Akplorti, Hlevi, Avegorme, Bakpo, Lakpo, Besakope, Lakpo, Dorklpoame, Tordzinu & Kpenu
j) Cattle rearing	Kua, Kpotame, Kasangblekpo, Kpordiwlor, Dzitsekope, Fieve-Kpodzi, Dendo, Dedo, Amedormekope, Tordzinu, Dorklpoame, Gonu
k) Beans farming	Fieve-Dugame, Fieve-Kpodzi
<b>Agro-processing Enterprises</b>	
a) Cassava processing	-Dendo, Kpotame, Yorkutikpo, Akutukope, Agorgbe, Dedo
b) Fish processing	-Tadze, Gonu & Sokpoe
c) Soyabeans processing	-Agbakope
<b>Agro-industrial Enterprises</b>	
a) Soap and detergent making	-Sogakope
b) Baking and confessionalary	-Sogakope, Sokpoe, Tefle & Dabala Junction
<b>Traditional Craft Enterprises</b>	
a) Batik tie and dye	-Agorkpo, Dendo, Sogakope
b) Mat weaving	-Detsawome, Gamenu, Galosota, Adutor, Lolito, Akutukope, Tadze, Atravenu, Nyinuto, Asidowui, Dedo, Amedorme, Gonu & Larve
c) Ceramics	-Vume & Tefle
d) Basket weaving	-Avegoeme

**2026 COMPOSITE ANNUAL ACTION PLAN: SOUTH DISTRICT ASSEMBLY**

Post-Harvest Enterprises a) Crop drying (pepper)	-Agbakope, Agbagorme, Hikpo, Sasekope, Dendo, Tsavanya & Tsavanya
Fabrication a) Screw press for cassava and palm oil processing, soap cutting machine, cassava greater	-Sogakope
Others a) Hospitality facilities b) Financial services c) Stone, gravel & sand mining	-Sogakope, Agorkpo, Tefle, Sokpoe & Dabala -Sogakope, Kpotame, Dabala & Agorkpo -Bakpo, Toklokpo

CHAPTER TWO:

DEVELOPMENT GOALS, OBJECTIVES, STRATEGIES AND PROGRAMMES

4.0 Formulation of Development Goals, Objectives and Strategies

**4.1. Development Focus**

Development focus is the key issue that needs to be pursued in order to eliminate development problems and bring about improved living conditions of the people in the District. Based on broader consultation, and considering the overarching development gaps of the District, the development focus/theme of the District within this Medium Term is *“To improve upon the general living standard of the people, through investment in productive infrastructural development and the development of human capital of the District”*.

**4.1.1 District Development Goals**

In pursuing the aim of achieving the District development focus (*To improve upon the general living standard of the people, through investment in productive infrastructural development and the development of human capital of the District*), the District has formulated its Development Goals aimed at addressing the identified prioritized development issues. Goals formulated considered crosscutting and emerging development issues.

The Overall Goal of the District is; ***to achieve sustainable and inclusive Socio-economic Development, through a concerted effort of all stakeholders to create an enabling environment for the growth and development of the private sector-led economy.*** This goal will be achieved through enhance wealth creation, skills development and increased participatory decision making in order to improve the standard of living of citizens. Besides the overall District goal, Assembly has formulated the following sustainable specific goals, objectives, strategies and development programmes outlined under each Development Dimension as illustrated in the t

## 2026 COMPOSITE ANNUAL ACTION PLAN: SOUTH DISTRICT ASSEMBLY

Prioritized Issues	Goals	Objectives	Aligned National Objectives	Strategies	Development Programme
<b>Dimension/Thematic Area: Economic Development</b>					
<p>1. Weak capacity to mobilize adequate revenue for development</p> <p>2. Leakages of the revenue being collected</p> <p>3. unwillingness residents to honor tax obligations</p>	Promote sustained and inclusive Macro-Economy growth	<p>To build the capacity of revenue staff of the Assembly to increase internal generated funds (IGF) by 30% at the end of 2029</p> <p>To scale-up monitoring of revenue staff in order to block IGF leakages by 90% at the end of 2029</p> <p>To scale-up revenue mobilization campaigns to increase revenue collection from residents by 70% by December, 2029</p>	1.1.4 Ensure improved fiscal performance and sustainability	<p>1.1.4.1 Strengthen revenue institutions and administration to eliminate revenue leakages and diversify revenue</p> <p>1.1.4.4 Enhance revenue mobilization Strengths of the District</p> <p>1.1.4.22 Ensure effective and efficient public investment management</p>	<p>1) Capacity building for revenue staff Programme</p> <p>2) Sustainable resource mobilization programme</p>
<p>1. High cost of credit</p> <p>2. Difficulty in accessing credit facilities by businesses</p> <p>1. Poor state and lack of market facilities</p> <p>2. High level of illiteracy among the operative in MSME leading to poor adoption of improved technology</p> <p>3. High unemployment among the youth especially women</p> <p>4. Low savings and capital for expansion</p>	Promote sustained, inclusive and sustainable economic growth, with productive employment and decent work for all	To stimulate progressively the business enabling environment to promote economic growth that ensure women's economic participation and access to resources through partnerships with financial institutions and NGOs by December, 2029	<p>1.3.1 Enhance business enabling environment</p> <p>1.3.3 Improve support for entrepreneurship and MSME development</p> <p>1.4.2 Enhance Domestic Trade</p> <p>1.4.6 Promote women's economic participation and access to resources.</p>		<p>1) Programme for enhancement of market infrastructure</p> <p>2) Promote access to affordable credit facilities especially women programme</p> <p>3) Programme for capacity building of entrepreneurs and MSME</p>

## 2026 COMPOSITE ANNUAL ACTION PLAN: SOUTH DISTRICT ASSEMBLY

Prioritized Issues	Goals	Objectives	Aligned National Objectives	Strategies	Development Programme
of businesses in the sector					
5. Poor road network to Tourist Sites 6. Untapped tourism Strengths	Promote sustained, inclusive and sustainable Tourism development to create employment and decent work for all	To devise and implement Programmes and projects to promote sustainable tourism that creates jobs and promotes local culture and products by 20% by December, 2029	1.4.7 Improve connectivity & reduce transport costs  1.5.1 Diversify and expand the tourism industry	1.5.1.3 Develop available and potential tourism sites to meet international standards  1.5.1.5 Encourage community initiatives in tourism development and partner with chiefs and other traditional authorities to promote the commercialization of heritage festivals.  1.5.1.6 Improve tourism infrastructure including road networks leading to tourist centers  1.5.1.8 Promote local cuisines on the menus of hotels and other tourist facilities 1.5.1.11 Promote safety and security in all tourist sites	1. Expansion of roads and other infrastructure under tourism sector programme  2. Programme for sustainable tourism and Creative Arts promotion
1. Declining soil fertility 2. Inadequate market for farm produce 3. High post-harvest losses	Ensure food and income security	To increase the agricultural productivity and the incomes of small-scale food producers, particularly	1.6.1 Create an enabling agribusiness environment  1.6.2 Enhance agricultural production and agri-	1.6.1.2 Build the capacity of farmer-based organizations and other actors along the value chain in marketing,	1) Capacity building of farmer-based organizations and other actors along the value

## 2026 COMPOSITE ANNUAL ACTION PLAN: SOUTH DISTRICT ASSEMBLY

Prioritized Issues	Goals	Objectives	Aligned National Objectives	Strategies	Development Programme
<p>4. Limited storage facilities</p> <p>5. Limited access to farm inputs and implements</p> <p>6. Difficulty in accessing land for farming</p> <p>7. Inadequate irrigation facilities</p> <p>8. Poor condition of access roads/no access roads to farms</p> <p>9. Limited number of extension officers</p> <p>10. Limited technology in farming</p> <p>11. Limited access to veterinary services</p> <p>12. Limited appreciation of Climate Change and Green Economy Issues</p> <p>13. Inappropriate farming practices</p> <p>14. High crop failures due to shortages in rains/floods</p> <p>15. Limited access to arable land for farming especially women</p> <p>16. Inadequate agribusinesses along the value chain</p>		<p>women and fishers, including through secure and equal access to land, other productive resources and inputs, knowledge, financial services, markets, and opportunities for value addition and non-farm employment by end of December, 2029</p>	<p>business for economic transformation</p> <p>1.6.3 Enhance Sustainable and Resilient Food Production System</p> <p>1.6.4 Promote food transformation (processing and value-addition)</p> <p>1.6.6 Improve post-harvest management</p> <p>1.6.7 Promote agriculture as a viable business among the youth</p> <p>1.6.8 Promote livestock and poultry development</p>	<p>standards, and other skills development.</p> <p>1.6.1.6 Improve access to agricultural lands for marginalised groups</p> <p>1.6.1.8 Promote investments in modern and affordable irrigation systems for all year-round production</p> <p>1.6.1.9 Promote development of improved crop varieties, pest control, and soil management strategies</p> <p>1.6.1.10 Increase storage facilities for agro-produce including warehouse, silos, cold storage facilities to improve marketing of agriculture produce</p> <p>1.6.2.2 Promote the use of renewable energy (solar and wind) for irrigation.</p> <p>1.6.2.6 Promote development of irrigation facilities</p>	<p>chain in marketing, standards, and other skills development programme</p> <p>2) Programme for infrastructure development in irrigation systems, farm roads and storage facilities.</p> <p>3) Promote sustainable investment in livestock and poultry production programme</p> <p>4) Promote access to affordable credit, farm inputs, implements and farm lands programme</p>

## 2026 COMPOSITE ANNUAL ACTION PLAN: SOUTH DISTRICT ASSEMBLY

Prioritized Issues	Goals	Objectives	Aligned National Objectives	Strategies	Development Programme
<p>17. Over-reliance on rain-fed agriculture</p> <p>18. Inadequate investments in the agricultural sector</p>				<p>1.6.2.13 Implement relevant strategic flagships including Agriculture for Economic Transformation Agenda (AETA) through the Feed Ghana Programme (FGP).</p> <p>1.6.3.2 Promote secure access to agricultural land by women, youth and migrant farmers</p> <p>1.6.3.3 Train farmers on sustainable agro-ecology and increase access to improved seed and breed varieties</p> <p>1.6.6.3 Facilitate continuous expansion and upgrading of road infrastructure connecting farms to marketing centres.</p>	
<b>Dimension/Thematic Area: Social Development</b>					
<p>1) Poor performance at both BECE and WASSCE Examinations</p> <p>2) Poor supervision of teachers</p> <p>3) Inadequate teaching and learning materials</p>	<p>Ensure inclusiveness &amp; equitable quality education &amp; promote lifelong learning</p>	<p>To improve quality of teaching and learning environment at all levels by 60% by December, 2029</p> <p>To institute disciplinary measures at all levels of</p>	<p>2.6.1 Enhance equitable access to, and participation in quality education at all levels</p> <p>2.6.3 Promote inclusive education</p>	<p>2.6.1.1 Accelerate the implementation of Early Childhood Education policy on education (SDG Targets 4.1, 4.2)</p> <p>2.6.1.5 Enhance quality of teaching and learning</p>	<p>1) Rehabilitation and expansion of inclusive school infrastructure Programme</p> <p>2) Programme to enhance inclusive teaching and learning</p>

## 2026 COMPOSITE ANNUAL ACTION PLAN: SOUTH DISTRICT ASSEMBLY

Prioritized Issues	Goals	Objectives	Aligned National Objectives	Strategies	Development Programme
<p>4) Inadequate logistics at GES to ensure effective monitoring of service delivery</p> <p>5) Low enrolment at community schools</p> <p>6) Poor condition of some school blocks</p> <p>7) Inadequate School block</p> <p>8) Inadequate furniture for schools</p> <p>9) Inadequate smart libraries</p> <p>10) Inadequate supply of water and sanitation facilities in most public schools</p> <p>11) Indiscipline in both basic and secondary schools among students.</p> <p>12) Low participation of females in learning of science, technology, engineering and mathematics</p> <p>13) Inadequate and inequitable access to education for PWDs and people with special needs at all level</p>		<p>schools to reduce indiscipline among students by 70% by December, 2029</p>	<p>2.6.5 Promote e-learning at all levels</p> <p>2.6.6 Strengthen school management systems</p> <p>2.6.8. Promote literacy and lifelong learning</p>	<p>environment at all levels (SDG Targets 4.1, 4.6, 4.c)</p> <p>2.6.1.7 Expand infrastructure and facilities at all levels (SDG Target 4.a, 4.c)</p> <p>2.6.1.8 Promote teaching and learning of science, technology, engineering, and mathematics (STEM) and ICT education among girls in basic and secondary education (SDG Target 4.1, 4.b)</p> <p>Expand digital libraries to enhance access to global teaching and learning materials for both teachers and learners</p> <p>2.6.6.3 Strengthen supervision, management, and accountability at all levels of the educational system (SDG Target 16.6)</p> <p>2.6.6.5 Strengthen PTA, School Management Committees (SMC) and Board of Governors (BOG) in public schools (SDG Target 16.6)</p>	<p>of science, technology, engineering and mathematics especially females to improve quality education at all levels.</p> <p><b>3)</b> Programme to strengthen supervision, school management, discipline and accountability at all levels of the educational system</p>

## 2026 COMPOSITE ANNUAL ACTION PLAN: SOUTH DISTRICT ASSEMBLY

Prioritized Issues	Goals	Objectives	Aligned National Objectives	Strategies	Development Programme
				2.6.8.5 Increase access to school and public library facilities (SDG Target 4.6, 4.a)	
<ol style="list-style-type: none"> <li>1. High teenage pregnancy</li> <li>2. Inadequate logistics for the implementation of CHPs</li> <li>3. Some CHOs serving a larger population</li> <li>4. Non – functioning community health committees</li> <li>5. Poor treatment of clients by health workers.</li> <li>6. Inadequate CHPS and Health Centers in the District</li> <li>7. Poor condition of some health facilities</li> <li>8. Inadequate health personnel</li> <li>9. High rate of drugs and substance abuse</li> <li>10. High of level of mental illness</li> </ol>	Safeguard healthy lives & improve well-being for all at all ages	<p>To improve access to resilient and inclusive quality health infrastructure and health care delivery including accommodation for health personnel by 40% by December, 2029</p> <p>To devise and implement programmes to reduce indiscipline among nurses, youth and to reduce teenage pregnancy, drugs and substance abuse by 70% by end of December, 2029</p> <p>To form and strengthen existing community health committees to increase their oversight responsibilities for proper functioning of health facilities in the District by 2029.</p>	<p>2.1.2 Improve maternal and adolescent reproductive health</p> <p>2.2.3 Enhance the capacity for effective management of internal migration and border management</p> <p>2.3.1 Ensure equitable, affordable and quality Universal Health Coverage (UHC)</p> <p>2.3.7 Provide adequate health infrastructure and institute functional health logistics</p> <p>2.3.8 Strengthen healthcare and health service delivery management system</p> <p>2.3.9 Enhance capacity for surveillance and management of epidemics and pandemics</p>	<p>2.1.2.1 Strengthen the integration of family planning education in adolescent reproductive healthcare services (SDG Target 3.7, 5.6)</p> <p>2.1.2.2 Improve the quality of adolescent and youth-friendly services across all levels of healthcare facilities (SDGs Target 3.5, 3.7, 3.8)</p> <p>2.1.2.4 Enforce existing laws and implement targeted interventions to end child marriage. (SDG Target 5.3)</p> <p>2.1.2.6 Scale up relevant teenage pregnancy-reduction interventions (SDG Targets 3.7, 5.3)</p> <p>2.3.1.6 Enhance disability-friendliness of health care services</p> <p>2.3.7.1 Upgrade and expand existing health</p>	<ol style="list-style-type: none"> <li>1) Rehabilitation and expansion of inclusive Health infrastructure Programme</li> <li>2) Enhancement of capacity for surveillance and management of health facilities Programme</li> <li>3) Programme to improve maternal and adolescent reproductive health, reduce the rate of drugs and substance abuse</li> </ol>

## 2026 COMPOSITE ANNUAL ACTION PLAN: SOUTH DISTRICT ASSEMBLY

Prioritized Issues	Goals	Objectives	Aligned National Objectives	Strategies	Development Programme
				<p>infrastructure and facilities especially for PWDs</p> <p>2.3.9.2 Improve surveillance, monitoring and evaluation of epidemics and pandemics (SDGs Target 3.d, 11.5, 11.b, 13.1, 13.3) (AU Target AI G7 P5 T1)</p>	
High unemployment among the youth especially women	Increase Employment and Decent Work	To reduce unemployment rate by 20% in the District by the end of 2029	2.8.2 Promote job creation and decent work	2.8.2.5 Integrate employment services with social protection programmes to enhance livelihoods and reduce vulnerabilities (SDG 4.4, 8.3, 10.4)	1) Implement social and economic interventions to reduce poverty and income inequalities especially among the vulnerable groups Programme
<p>1) Inadequate opportunities for PWDs to develop and utilise their potential</p> <p>2) Inequitable access to socio-economic incentives for PWDs</p>	Disability-Inclusive Development	<p>To facilitate, incentivize and create socio-economic opportunities for PWDs to develop and utilize their potential in the District by closed of 2029.</p> <p>To create enabling environment for active participation and equal inclusion of PWDs in all dimensions of development in the District by 2029</p>	<p>2.11.1 Promote the active participation and equal inclusion of PWDs in all dimensions of social and economic development</p> <p>2.11.2 Eliminate discrimination in all forms and protect the rights and entitlements of PWDs</p> <p>2.11.4 Strengthen institutions and systems that ensure protection, inclusion, and capacity building of PWDs</p>	<p>2.9.3.3 Implement the CLASS scheme alongside the LEAP cash grant for sustainable income earning opportunities (SDG Targets 8.10, 9.3)</p> <p>2.11.1.2 Promote effective implementation, monitoring and evaluation of the disbursement of 3% District Assemblies Common Fund to PWDs</p> <p>2.11.2.1 Facilitate the right of PWDs to access sexual</p>	<p>2) Programme to improve economic opportunities for PWDs</p> <p>3) Programme to create enabling environment for active participation and equal inclusion of PWDs especially women in socio-economic development</p>

**2026 COMPOSITE ANNUAL ACTION PLAN: SOUTH DISTRICT ASSEMBLY**

Prioritized Issues	Goals	Objectives	Aligned National Objectives	Strategies	Development Programme
				and reproductive healthcare and family planning information and education  2.11.4.4 Provide targeted support for women with disabilities to promote their welfare and empowerment	
1) Overburdened household chores on women and girls	Child Protection and Development	To facilitate, promote and implement programmes that Prevent and protect children from all forms of violence, abuse, neglect and exploitation in the District by December, 2029	2.12.1 Prevent and protect children from all forms of violence, abuse, neglect and exploitation  2.12.2 Promote the rights and welfare of children	2.12.1.6 Increase awareness on the effects of child labour (SDGs Target 8.7)  2.12.2.1 Implement and enforce comprehensive support mechanisms, including counselling, for victims of domestic violence including child victims (SDGs Target 1.3)  2.12.2.2 Promote public-private partnerships in the provision of alternative care services such as foster and kinship care (SDGs Target 1.b)  2.12.2.3 Promote Public Awareness Campaigns  2.12.2.4 Intensify the implementation of Child Right Conversion	Promote child rights, Protection and development programme

**2026 COMPOSITE ANNUAL ACTION PLAN: SOUTH DISTRICT ASSEMBLY**

Prioritized Issues	Goals	Objectives	Aligned National Objectives	Strategies	Development Programme
				<p>2.12.2.5 Promote positive parenting (SDGs Target 1.b)</p> <p>2.12.3.7 Facilitate children’s participation in development planning processes</p> <p>2.12.3.10 Strengthen family tribunal and juvenile courts</p> <p>2.9.3.16 Establish well-resourced and improve existing shelters for all categories of abused persons (SDG Target 11.1)</p> <p>2.12.3.5 Strengthen mainstreaming of child development and protection issues into development plans and budgets of MDAs and MMDAs (SDG Targets 5.c, 16.2)</p> <p>2.12.3.6 Strengthen the Department of Social Welfare and Community Development to implement child related policies and regulations (SDG Targets 16.2, 16.6)</p>	

## 2026 COMPOSITE ANNUAL ACTION PLAN: SOUTH DISTRICT ASSEMBLY

Prioritized Issues	Goals	Objectives	Aligned National Objectives	Strategies	Development Programme
<p>1) Inadequate logistics for Social Welfare department to deliver their mandate</p> <p>2) High incidence of poverty among vulnerable households and geographic areas</p> <p>3) Inadequate and limited coverage of social protection programmes for vulnerable groups</p>	<p>Reduce the inequality between the rich and the poor</p>	<p>To empower and promote the social, economic and political inclusion of all irrespective of age, sex, disability, race, ethnicity, origin, religion or economic or other status in the District by end of 2029</p> <p>To improve social services delivery by 70% through provision of adequate resources needed by the SWCD by December, 2029</p>	<p>2.9.1. Eradicate poverty and inequality in all forms and dimensions</p> <p>2.9.1.1 Enforce complementarity of existing social protection interventions through effective referral systems (SDGs Target 1.3, 1.5, 10.2)</p> <p>2.9.2. Reduce disparities in poverty within and across socioeconomic groups and geographical areas</p> <p>2.9.3 Strengthen social protection for the vulnerable</p>	<p>2.9.3.10 Strengthen monitoring and evaluation of social protection for all vulnerable persons (SDG Targets 1.5)</p> <p>2.9.3.2 Implement viable and sustainable economic livelihood schemes for vulnerable people (SDG Targets 1.4, 2.3, 14.b).</p> <p>2.9.3.13 Institute public sensitisation involving traditional authorities, against stigma, abuse, discrimination, and harassment of vulnerable people (SDG Targets 16.2, 16.3)</p>	<p>implement interventions reduce poverty and eradicate inequalities among vulnerable people programme</p> <p>Programme to strengthen monitoring and evaluation of social protection interventions.</p>
<p>1) Low participation of women in local level elections</p> <p>2) Weak prioritization of gender issues leading to low budget allocation for gender and gender related development issues</p>	<p>Achieve gender equality and empower all women and girls gap</p>	<p>To prioritize and embark on programmes and measures to give women equal rights to economic resources, as well as access to ownership and control over land and other forms of property, financial services, inheritance and natural resources, in accordance with national laws by at the end of 2029.</p>	<p>Promote economic empowerment of women</p> <p>2.10.3 Strengthen mainstreaming, coordination and implementation of gender related interventions in all sectors</p>	<p>2.10.3.7 Integrate gender equality measures in the medium-term budget framework and processes.</p> <p>2.10.2.3 Improve access to education, health, and skills training in income generating activities for vulnerable women (SDG Targets 3.8, 4.5)</p>	<p>Programme to promote women participation in local governance systems</p> <p>programme to reduce gender inequalities in access to education, health, and skills training in income generating activities for vulnerable women</p>

## 2026 COMPOSITE ANNUAL ACTION PLAN: SOUTH DISTRICT ASSEMBLY

Prioritized Issues	Goals	Objectives	Aligned National Objectives	Strategies	Development Programme
<p>1) Inadequate potable water supply/water rationing</p> <p>2) Broken down/uncompleted water systems in communities</p> <p>3) Poor management of water systems due to absence of WATSANs</p> <p>4) Inadequate sanitation facilities especially in some basic and secondary schools</p> <p>5) Inadequate refuse collection containers</p> <p>6) Poor drainage systems in the communities</p> <p>7) Lack of engineered land field site for the District</p> <p>8) Open defecation</p>	<p>Ensure availability and sustainability management of water and sanitation</p>	<p>To increase access to sustain adequate and potable water supply to all by 90% by December, 2029</p> <p>To improve access to adequate and equitable sanitation and hygiene for all by 80% and end open defecation, paying special attention to the needs of women and girls and those in vulnerable situations by end of 2029</p>	<p>2.5.1 Improve access to safe, reliable and sustainable water supply services for all</p> <p>2.5.2 Enhance access to improved and sustainable environmental sanitation services</p> <p>2.5.3 Promote efficient and sustainable waste management</p> <p>2.10.3 Strengthen mainstreaming, coordination and implementation of gender related interventions in all sectors</p> <p>2.12.3 Improve and strengthen the policy and legal environment, institutions and systems for child and family welfare</p> <p>2.14.1 Enhance the wellbeing and inclusion of the aged in national development</p>	<p>2.5.1.1 Accelerate the implementation of the Water for All Programme (SDG Target 6.1)</p> <p>2.5.1.4 Ensure routine maintenance of water infrastructure</p> <p>2.5.1.5 Ensure the provision of disability friendly water supply system (SDGs Target 6.1, Target 6.1)</p> <p>2.5.1.6 Develop and implement District Water and Sanitation Plans (DWSPs) (SDG Targets 6.1, 16.6)</p> <p>2.5.2.1 Promote District Led Total Sanitation Campaign (SDG Target 6.2)</p> <p>2.5.2.2 Modernize landfill infrastructure</p> <p>2.5.2.3 Expand access to waste bins</p>	<p>Programme to expand and rehabilitate inclusive drainage system, water and sanitation facilities.</p> <p>Scale-up sensitisation campaigns to promote proper sanitation management, handwashing and hygiene practices particularly among children programme</p>

**2026 COMPOSITE ANNUAL ACTION PLAN: SOUTH DISTRICT ASSEMBLY**

Prioritized Issues	Goals	Objectives	Aligned National Objectives	Strategies	Development Programme
				<p>2.5.2.6 Scale-up sensitisation campaigns to promote proper handwashing and hygiene practices particularly among children (SDGs Target 6.2)</p> <p>2.5.2.7 Develop innovative financing mechanisms and scale up private sector participation and investments in sanitation and waste management (SDG Targets 6.2, 17.3, 17.5)</p> <p>2.5.2.8 Strengthen institutional coordination and harmonisation in sanitation and waste management and hygiene services delivery</p> <p>2.5.2.12 Enforce building regulation (including accessibility standards for PWDs) on the provision of toilet facilities in household and institutional facilities</p> <p>2.5.3.2 Improve liquid waste management (SDG Targets 6.3, 6.a, 6.b)</p> <p>2.5.3.3 Attract private sector investment in</p>	

## 2026 COMPOSITE ANNUAL ACTION PLAN: SOUTH DISTRICT ASSEMBLY

Prioritized Issues	Goals	Objectives	Aligned National Objectives	Strategies	Development Programme
				wastewater management (SDG Target 17.17)	
<b>Dimension/Thematic Area: Environment, Infrastructure and Human Settlements</b>					
<p>1) Poor condition of urban and feeder roads</p> <p>2) Lack of proper drains along the roads at built-up areas causing rapid deterioration of roads in communities</p> <p>3) Lack of access roads within the major towns and the new settlements and between settlements</p> <p>4) Limited speed rumps on High Ways roads leading to over speeding and accidents</p>	Build resilient infrastructure, promote inclusive and sustainable industrialization and foster innovation	<p>To develop quality, reliable, sustainable and resilient infrastructure to support economic development and human well-being, with a focus on affordable and equitable access for all by 80% by end of 2029</p> <p>To improve road safety, notably by expanding public transport, road signs and speed humps with special attention to the needs of those in vulnerable situations, women, children, persons with disabilities and older persons by end of December, 2029</p>	<p>3.8.1 Improve efficiency and effectiveness of road transport infrastructure and services</p> <p>3.8.2 Enhance safety and security for all categories of road users</p>	<p>3.8.1.1 Expand and maintain road transport infrastructure (SDG Target 9.1, 11.2) (AU Target A2 G10 PI T1 &amp; 2)</p> <p>3.8.2.1 Strengthen health and safety standards in planning, design, construction, operations and maintenance for road transport (SDG Target 9.1, 11.2) (AU Target A2 G10 PI T1 &amp; 2)</p> <p>3.8.2.9 Step up public education for all categories of road users</p>	Programme to expand, maintain and develop roads and drainage infrastructure system for socio-economic development
<p>1) Poor maintenance culture</p> <p>2) High cost of maintenance</p> <p>3) Limited financing for maintenance</p>	Enhance road Infrastructure Maintenance	To improve the long span of road infrastructure to about 70% through routine maintenance in the District by December, 2029	3.16.1 Promote effective maintenance culture	3.8.1.6 Enhance maintenance and management practices for all road sectors (SDG Target 9.1, 11.2) (AU Target A2 G10 PI T1 & 2)	Maintenance of infrastructure programme
1) Difficulty in zoning due to family ownership of land as	Improve Human Settlements and Land Administration	To enhance collaboration between land owners and Assembly to ensure	3.12.1 Promote sustainable spatially	3.12.1.2 Accelerate the preparation, revision and implementation of Spatial	Programme to improve and sustain spatially integrated development of

## 2026 COMPOSITE ANNUAL ACTION PLAN: SOUTH DISTRICT ASSEMBLY

Prioritized Issues	Goals	Objectives	Aligned National Objectives	Strategies	Development Programme
<p>each family prefer the highest and best use of the parcels</p> <p>2) Access to land for communal use is difficult</p> <p>3) Difficulties in implementing local development plans as a result of poor cooperation of residents</p> <p>4) Lack of District Spatial Development Framework, Structural Plans and limited number of Local Plan making of the entire District difficult</p>		<p>proper zoning and permitting process for development projects in the District by the end of 2029</p> <p>To Accelerate the preparation, revision and implementation of Spatial Plans to reduce by 60% non-conformity of building codes and standards at all levels by December, 2029</p> <p>To provide access to safe, inclusive and accessible, green and public spaces, particularly for women and children, older persons and persons with disabilities by end of 2029</p>	<p>integrated development of human settlements</p> <p>3.17.1 Promote efficient and effective land administration</p>	<p>Plans (SDG Targets 11.3, 11.7, 11.a) (AU Target AI GI P4 T1)</p> <p>3.12.1.3 Intensify the use of Geographic Information System (GIS) in spatial/land use planning at all levels (SDG Targets 11.a, 11.b) (AU Target AI GI P4 T1)</p> <p>3.12.1.8 Intensify street naming and property addressing system.</p> <p>3.17.1.12 Promote proper demarcation of land boundaries</p> <p>Ensure provision of green and public spaces, particularly for women and children, older persons and persons with disabilities for good living life</p>	<p>human settlements and efficient and effective land administration</p>
<p>1) Weak response to disaster issues</p> <p>2) Frequent flooding incidents</p> <p>3) Lack of emergency equipment and materials to respond to disaster victims.</p>	<p>Make communities and human settlements inclusive, safe, resilient and sustainable</p>	<p>To significantly reduce the number of affected people and decrease by 70% the economic losses caused by disasters, including water-related disasters, with the focus on protecting the poor and</p>	<p>3.18.1 Improve national resilience to hydrological threats</p>	<p>3.18.1.1 Strengthen early warning and response mechanisms for disasters (SDGs Target 3.d, 13.3) (AU Target AI G7 P5 T1)</p> <p>3.18.1.2 Improve enforcement and</p>	<p>Disaster prevention, management and mitigation Programme</p>

**2026 COMPOSITE ANNUAL ACTION PLAN: SOUTH DISTRICT ASSEMBLY**

<b>Prioritized Issues</b>	<b>Goals</b>	<b>Objectives</b>	<b>Aligned National Objectives</b>	<b>Strategies</b>	<b>Development Programme</b>
<p>4) Inadequate knowledge on disasters</p> <p>5) Poor early warning systems</p> <p>6) Poor coordination among key institutions on disaster management and response</p> <p>7) Inadequate infrastructure for emergency response</p> <p>8) Weak social protection system for victims of disasters</p>		people in vulnerable situations.		<p>compliance of disaster risk reduction (DRR) laws (SDGs Target 11.5, 11.b) (AU Target AI G7 P5 T1)</p> <p>3.18.1.3 Promote awareness on disaster risk reduction (SDGs Target 11.5) (AU Target AI G7 P5 T1)</p> <p>3.18.1.4 Develop and implement disaster prevention and mitigation plans (SDGs Target 11.5) (AU Target AI G7 P5 T1) (SDGs Target 11.5, 11.b) (AU Target AI G7 P5 T1)</p> <p>3.18.1.9 Ensure inclusive and gender responsive approaches to disaster risk management (SDGs Target 11.5, 11.b) (AU Target AI G7 P5 T1)</p> <p>3.18.1.11 Ensure adherence to zoning policies and building regulation (SDGs Target 11.5, 11.b) (AU Target AI G7 P5 T1)</p>	
<p>1) Tree harvesting (illegal felling of</p>	Protect, Restore and promote sustainable use of Terrestrial	To promote the implementation of sustainable management	3.1.1 Safeguard forest and protected areas	3.1.1.4 Strengthen environmental governance including enforcement of	Conservation and management of environment Programme

**2026 COMPOSITE ANNUAL ACTION PLAN: SOUTH DISTRICT ASSEMBLY**

Prioritized Issues	Goals	Objectives	Aligned National Objectives	Strategies	Development Programme
<p>mangrove for firewood) 2) Bush fires</p>	<p>Ecosystems, sustainably manage forests, combat desertification, halt and reverse land degradation and biodiversity loss</p>	<p>of mangroves, halt deforestation, restore degraded mangroves, and increase afforestation and reforestation by 60% by December, 2029</p> <p>To significant reduce degradation of natural habitat, halt the loss of biodiversity, and by 2029 protect and prevent the extinction of threatened species (Sitatunga)</p>	<p>3.5.1 Reduce Environmental Pollution</p> <p>3.6.1 Combat deforestation, desertification and soil erosion</p>	<p>relevant legislations to protect and maintain the integrity of forest, wetlands and biodiversity hotspots (SDG Targets 16.6, 16.b) (AU Target AI G7 PI T1-6)</p> <p>3.1.1.5 Map and assign conservation status through bye-laws to mangrove forests, wetlands and sensitive marine areas (SDG Target 14.1, 14.2, 14.3, 14.5, 15.9) (AU Target AI G7 PI T2)</p> <p>3.1.1.8 Strengthen involvement of local communities in the management of forests and wetlands through mechanisms such as co-management systems (e.g., CREMAs and Community Forest Areas) SDG Targets 6.a, 6b 6.6, 11.4, 12.2, 15.1, 15.2, 15.5, 15.9, 15. a, 16.b) (AU Target AI G7 PI P2 T1 T2)</p> <p>3.5.1.9 Intensify public education on indiscriminate disposal of waste (SDG Target 11.6)</p>	

## 2026 COMPOSITE ANNUAL ACTION PLAN: SOUTH DISTRICT ASSEMBLY

Prioritized Issues	Goals	Objectives	Aligned National Objectives	Strategies	Development Programme
				(SDG Targets 3.9, 6.3, 16.b) (AU Target AI G7 P3 T1)	
<ol style="list-style-type: none"> <li>1) Illegal sand mining activities</li> <li>2) Pollution of water resources</li> <li>3) Poor agricultural practices which affect water quality</li> </ol>	Ensure proper Water Resources Management	To reduce the level of Environmental Pollution, bush fires and illegal sand mining activities by 60% by the end of 2029	3.3.1 Promote sustainable water resources development and management	<p>3.3.1.3 Promote efficient water use (SDG Targets 6.4, 6.5, 6.a) (AU Target AI G7 P4 T2)</p> <p>3.6.1.6 Enforce regulations to combat illegal sand mining (SDG Targets 15.2, 15.3.) (AU Target AI G7 P2 T2)</p> <p>3.5.1.1 Intensify enforcement of regulations and standards on air, soil and noise pollution including open burning (SDG Targets 11.6, 16. b) (AU Target AI G7 P3 T1)</p>	Protection and management of water bodies programme
<ol style="list-style-type: none"> <li>1) Negative impact of climate variability and change</li> <li>2) Weak institutional coordination mechanism for climate action</li> <li>3) Low institutional capacity to address climate change and variability issues</li> </ol>	Initiate Actions to Combat Climate Change and its Impacts	<p>To increase education, awareness raising and human and institutional capacity on climate change mitigation, adaptation, impact reduction, and early warning in the District by the end of 2029</p> <p>To promote mechanisms for raising capacities for</p>	<p>3.7.1 Enhance institutional capacity and coordination for effective climate action</p> <p>3.7.2 Enhance climate change resilience</p>	3.7.1.7 Implement land restoration initiatives, climate adaptation strategies, and conservation policies to promote indigenous crops, livestock breeds, and agro-biodiversity.	Capacity building on climate change and green economy related issue Programme.

## 2026 COMPOSITE ANNUAL ACTION PLAN: SOUTH DISTRICT ASSEMBLY

Prioritized Issues	Goals	Objectives	Aligned National Objectives	Strategies	Development Programme
		effective climate change related planning and management, in the District, including focusing on women, youth, local and marginalized communities by end of 2029			
<b>Dimension/Thematic Area: Governance, Corruption and Public Accountability</b>					
1) Inadequate office space and accommodation facilities for staff of the Assembly 2) Inadequate Office Accommodation for the police, Fire service and Ambulance department 3) Inadequate logistics such as laptops, printers, office furniture etc. for decentralized departments to function well 4) Inadequate capacity for plan preparation, implementation, monitoring and evaluation by departments	Deepening Democratic Governance	To increase access to improved office space, accommodation for staff of all departments by 20% for improved service delivery in the District by the end of 2029  To increase access to office materials and equipment for improved service delivery by 90% by the end of 2029  To improve the capacities of all departmental staff and Assembly members on plan preparation, implementation monitoring and evaluation to track and assess the impact of development programmes on the citizenry in the District by 2029	4.1.1 Strengthen democratic governance  4.2.1 Deepen political and administrative decentralization  4.7.1 Promote cultural heritage for national development	4.1.1.9 Intensify civic education and democratic literacy at all levels with a focus on youth, marginalized groups, and first-time voters  4.2.1.2 Enhance the capacity and effectiveness of assembly members and staff at the local level  4.2.1.3 Resolve discrepancies in inter-District boundary demarcation  4.3.1.1 Strengthen systems and structures for ensuring transparency and accountability in the management of public funds	Capacity building of staff and other key stakeholders for improve service delivery programme  Programme to strengthen local governance, transparency and accountability

## 2026 COMPOSITE ANNUAL ACTION PLAN: SOUTH DISTRICT ASSEMBLY

Prioritized Issues	Goals	Objectives	Aligned National Objectives	Strategies	Development Programme
<p>1) Underperformance of District development plan and budget due to low or non-releases/delay releases of statutory funds by central government to execute planned development projects</p> <p>2) Low Internally Generated Funds (IGF)</p>	<p>Improve Local Governance and Decentralization</p> <p>Build effective, accountable and inclusive institutions at all levels.</p>	<p>To develop effective, accountable and transparent institutions at all levels by end of 2029</p> <p>To improve revenue mobilization both internal and external sources by 40% by December, 2029</p>	<p>4.2.3 Strengthen fiscal decentralization</p> <p>4.3.1 Deepen transparency and public accountability</p>	<p>4.2.1.4 Revamp and adequately resource sub-District structures (Town, Area, and Unit Committees) to perform statutory functions effectively.</p> <p>4.2.1.9 Improve efficiency in service delivery</p> <p>4.2.3.2 Enhance revenue mobilisation capacity of MMDAs</p> <p>4.3.1.7 Expand access to public information and initiatives that promote accountability</p>	<p>Mobilization of both internal and external human, materials and financial resources programme</p> <p>Programme to enhance transparent and accountable governance system</p>
<p>1) Low participation of people in local governance system</p>	<p>Ensure responsive, inclusive, participatory and representative decision making at all levels</p>	<p>To improve citizens active participation in local governance system including, planning process and transparency and public accountability in the District by 2029</p>	<p>4.6.1 Promote civic and civil society engagement in development</p>	<p>4.2.1.5 Institute mechanism for effective inter-service/inter-sectoral collaboration and cooperation at District, regional and national levels</p> <p>4.3.1.8 Boost public interest and participation in governance</p> <p>4.1.1.11 Promote affirmative action policies and legal reforms to enhance representation of women, youth, and</p>	<p>Programme to Promote citizens active participation in local governance system including, planning process and transparency and public accountability</p>

**2026 COMPOSITE ANNUAL ACTION PLAN: SOUTH DISTRICT ASSEMBLY**

Prioritized Issues	Goals	Objectives	Aligned National Objectives	Strategies	Development Programme
				<p>persons with disabilities in governance structures</p> <p>4.2.1.8 Strengthen the People’s Assembly concept to encourage citizens to participate in governance</p> <p>4.3.1.9 Enhance participatory budgeting, revenue, and expenditure tracking at all levels</p> <p>4.3.1.10 Strengthen feedback mechanisms in public service delivery to capture citizen inputs</p> <p>4.6.1.2 Increase civic participation among traditional authorities and youth</p> <p>4.7.1.3 Foster active youth participation in cultural activities</p> <p>4.7.1.5 Enhance resource allocation for cultural programmes and cultural heritage</p> <p>4.7.1.8 Create awareness of the importance of culture for development among the general public</p>	

## 2026 COMPOSITE ANNUAL ACTION PLAN: SOUTH DISTRICT ASSEMBLY

Prioritized Issues	Goals	Objectives	Aligned National Objectives	Strategies	Development Programme
				4.7.1.10 Mainstream and implement culture related activities in the MTDPs.	
<p>1) Inadequate streetlights</p> <p>2) Rampant burglary issues in the District</p>	Promote peaceful and inclusive societies for sustainable development,	<p>To improve peace and order for sustain economic growth in the District by December, 2029</p> <p>To reduce burglary and other crimes levels by 50% by December, 2029</p>	4.8.1 Enhance public safety and security	4.8.1.2 Intensify public education campaigns on safety and crime prevention	Programme to improve citizens safety and security for socio-economic development
<p>1) Weak collaboration among decentralized departments in the design and implementation of government programmes and projects</p> <p>2) Low demand and utilization of M&amp;E results</p> <p>3) Weak reporting and unreliable M&amp;E data</p> <p>4) Poor record keeping and documentation</p> <p>5) Weak institutional memory in the Assembly</p>	Enhance Implementation, Coordination, Monitoring and Evaluation systems in the District	<p>To improve collaboration and the capacities of all departmental staff on plan preparation, implementation monitoring and evaluation to track and assess the impact of development programmes on the citizenry in the District by 2029</p> <p>To Strengthen feedback mechanisms in public service delivery to increase demand and utilization of M&amp;E results and to capture citizen inputs by December, 2029</p> <p>To improve Assembly records keeping system and institutional memory</p>	4.2.2 Improve decentralised planning	4.2.2.2 Promote inclusive and participatory planning processes implementation, monitoring and evaluation that integrate local economic development (LED) opportunities	Capacity building on data collection and analysis, monitoring and evaluation collaboration among stake institution in service delivery programme

## 2026 COMPOSITE ANNUAL ACTION PLAN: SOUTH DISTRICT ASSEMBLY

Prioritized Issues	Goals	Objectives	Aligned National Objectives	Strategies	Development Programme
6) Inadequate data and information storage systems		of the Assembly through establishment of data and information storage systems by December, 2029			
<b>International Relations</b>					
1) Limited Diaspora engagement and participation in District development	Regional And Global Relations	Enhance Ghana's international image and influence	Enhance Ghana's international image and influence	Ensure participation of Ghanaians abroad in national development (SDG Target 16.7; ECOWAS Protocol Art. 23)	Promote implementation of interventions to attract diaspora participation and investment programme.

## 2026 COMPOSITE ANNUAL ACTION PLAN: SOUTH DISTRICT ASSEMBLY

### CHAPTER THREE

#### COMPOSITE ANNUAL ACTION PLAN (2026)

This Activity Plan is based on the Development programme formulated for the achievement of specific policy outcomes in 2026. This constitutes those projects or activities, to be implemented in the 2026 as part of the continuous efforts to achieve the broader goal of the District Medium Term Development Plan 2026-2029. Its detailed activities are categorized under the various Development Dimensions of the National Development Policy Framework, Resetting-Ghana Agenda 2026-2029.

Objective: To build the capacity of revenue staff of the Assembly to increase internal generated funds (IGF) by 30% at the end of 2029; To scale-up monitoring of revenue staff in order to block IGF leakages by 90% at the end of 2029 and To scale-up revenue mobilization campaigns to increase revenue collection from residents by 70% by December, 2029																	
Programmes: Capacity building for revenue staff Programme and Sustainable resource mobilization programme																	
Project	Location	Baseline	Indicator	Time Frame				GOG	Cost				Project Status		Implementing Institution/ Department		
				Q1	Q2	Q3	Q4		DACF	DACF-RFG	IGF	Others	New	Ongoing	Lead	Collaborating	
Organize training for the Area Council staff in revenue mobilization and financial management	Sogakope	Inadequate skills in revenue mobilization and financial management	Area Council staff trained								10,000			√		STDA	GIZ/VRCC
Organize capacity building program for Budget and IGF	Sogakope	Limited capacity on strategies for mobilizing revenue	Capacity building strategies for mobilizing revenue for								10,000			√		STDA	GIZ/VRCC

## 2026 COMPOSITE ANNUAL ACTION PLAN: SOUTH DISTRICT ASSEMBLY

technical committee members on Composite Budgeting and strategies for mobilizing revenue			IGF TC conducted												
Update of revenue data Build capacity of revenue collectors	Sogakope	Limited data on revenue collectors	Revenue data updated					5,000		√			Budget Unit	Area Councils	
Set up task force to collect and monitor revenue collection	Sogakope	Inadequate revenue collectors	Task force formed					10,000		√			STDA		
Procure needed logistics for revenue collection and monitoring	Sogakope	Scarce logistics for revenue collection	Logistics procured					25,000		√			STDA		
Prepare and implement Revenue Improvement Action Plans	Sogakope	Routine activity	Revenue improvement action plan prepared					4,000		√			IGF Tech. Comm.	Area Councils	

Objective: To collaborate with NGOs and financial institutions to reduce interest rate and collateral requirement for accessing credit facilities by businesses by end of 2029; To expand market facilities to about 75% to promote marketing activities in the district by December, 2029; and To improve MSME savings and capital expansion by 50% through Financial literacy training by December, 2029

## 2026 COMPOSITE ANNUAL ACTION PLAN: SOUTH DISTRICT ASSEMBLY

Programmes: Programme for enhancement of domestic market and sustainability of partnership between the District Assembly and the private sector; Promote access to affordable credit facilities especially women programme and Programme for capacity building of entrepreneurs and MSME																	
	Location	Baseline		Time Frame				Cost					Project Status		Implementing Institution/ Department		
				Q1	Q2	Q3	Q4	GOG	DACF	DACF-RFG	IGF	Others	New	Ongoing	Lead	Collaborating	
Implement PPP initiatives to attract new investors to develop assets in the tourism and economic sectors of the District.	Sogakope	Lack of investors to develop assets in tourism	PPP initiatives implemented						20,000					√		STDA.	GTA/ Private Sector operators
Organise Half year and Annual Business Performance Review Meetings	Sogakope	Routine activity	Half year and Annual Business Performance meetings conducted						30,000					√		STDA.	GEA/ ASSI
Train the youth on entrepreneurial/Technical and managerial skills for job creation	Sogakope	Routine activity	Youth trained								10,000	10,000		√		STDA.	GEA/ ASSI
Facilitate access to Credit to Micro, Small and Medium Enterprises (MSMEs Fund)	Sogakope	Routine Activity	Access to Credit to Micro, Small and Medium Enterprise improved						500,000		10,000	10,000		√		STDA.	GEA/ ASSI
Facilitate the establishment of a Light Industrial Area	Hlevi	Lack of Light Industrial Area	Light Industrial Area established						100,000		10,000	10,000		√		STDA.	GEA/ ASSI
Facilitate the operationalization of a 24-Hour Business Resource Centre	Sogakope	Lack of 24-Hour Business Resource Centre	24-Hour Business Resource						30,000		5,000	5,000		√		STDA	GEA/ ASSI

**2026 COMPOSITE ANNUAL ACTION PLAN: SOUTH DISTRICT ASSEMBLY**

			Centre established												
Facilitate the provision of Start-up Kits to youth led businesses especially women owned businesses	Sogakope	Routine Activity	Start-up Kits to youth led businesses especially women owned businesses provided					150,000		5,000	5,000	√		STDA.	GEA/ASSI
Facilitate the formation of Village Savings and loans associations (VSLAs) in the rural communities	Selected Communities	Lack of Village Savings and loans associations (VSLAs)	Village Savings and loans associations (VSLAs) formed					30,000		5,000	5000	√		STDA.	GEA/ASSI
Facilitate needs assessment for vulnerable groups especially women, youth, and people who are differently abled and support them to establish viable businesses to combat the impart of climate change in rural communities	Sogakope	Outdated data on vulnerable groups	Needs assessment for vulnerable groups conducted					100,000.00		5,000	5000	√		STDA.	GEA/ASSI
Build the capacities of MSMEs to participate in all Public-Private Partnerships (PPPs) and local content arrangements	Sogakope	Limited understanding of MSMEs to participate in all Public-Private Partnerships (PPPs) and local content arrangements	Capacities of MSMEs built					25,000		5,000		√		STDA.	GEA/ASSI

**2026 COMPOSITE ANNUAL ACTION PLAN: SOUTH DISTRICT ASSEMBLY**

Organise or participate in trade exhibitions and cultural fares	Sogakope	Routine Activity	Trade exhibitions and cultural fares organized					25,000		5,000		√		STDA. CNC
Facilitate the registration of MSMEs (green enterprises) to be registered with the Office of the Registrar of Companies (ORC), FDA, GSA, etc	Sogakope	Routine Activity	Registration of MSMEs conducted					50,000		4,000	5,000	√		GEA ASSI
Provide needed logistical support to ensure smooth implementation of Financial Inclusive for Last Mile Actors (FILMA) project.	Selected Communities	Lack of needed logistical support to ensure smooth implementation of Financial Inclusive for Last Mile Actors (FILMA) project.	Needed logistical support to ensure smooth implementation of Financial Inclusive for Last Mile Actors (FILMA) project provided							5,000	15,000	√		SEND-GHANA STDA/ GEA/ ASSI
Market with Two-Storey, 30-Units Local stores, 2-Unit Crèche, 6-Unit wash rooms with changing rooms for market women, Health Center and a mechanized Boreholes system	Dabala	Lack of market with Two-Storey, 30-Units Local stores, 2-Unit Crèche, 6-Unit wash rooms with changing rooms for market women,	Market with Two-Storey, 30-Units Local stores, 2-Unit Crèche, 6-Unit wash rooms with changing rooms for market women, Health Center					4,800,000		10,000		√		STDA. VRCC/ MoLG CRA

**2026 COMPOSITE ANNUAL ACTION PLAN: SOUTH DISTRICT ASSEMBLY**

		Health Center and a mechanized Boreholes system	and a mechanized Boreholes system constructed											
Construct 1No. inclusive Urban Park, 2No. speed boats and other ancillary facilities for Ceremonial and relaxation	Sogakope	Lack of 1No. inclusive Urban Park, 2No. speed boats and other ancillary facilities for Ceremonial and relaxation	1No. inclusive Urban Park, 2No. speed boats and other ancillary facilities for Ceremonial and relaxation constructed				1,800,000.00	20,000		√			STDA.	
Establish a Ceramics Art Centre and Museum in Vume	Vume	Lack of Ceramics Art Centre and Museum in Vume	Ceramics Art Centre and Museum in Vume constructed				800,000.00			√			STDA.	
Provide training for local artisans, particularly women who are central to the ceramic industry, to upgrade their skills in glazing, firing, and contemporary ceramic design.	Sogakope	Inadequate training for local artisans	Training for local artisans provided			30,000				√			STDA.	GEA/ASSI

## 2026 COMPOSITE ANNUAL ACTION PLAN: SOUTH DISTRICT ASSEMBLY

Objective: To improve road network system to increase access to tourist sites and hospitality industries in the District by December 2029; and To collaborate and collaborate with private investors and Ghana Tourism Authority respectively develop Untapped tourism Strengths in the District by December 2029.																	
Programmes: Expansion of roads and other infrastructure under tourism sector programme and Programme for sustainable tourism and Creative Arts promotion																	
Project	Location	Baseline	Output Indicator	Time Frame				GOG	Cost				Project Status		Implementing Institution/ Department		
				Q 1	Q 2	Q 3	Q 4		DACF	DACF-RFG	IGF	Others	New	Ongoing	Lead	Collaborating	
Develop fliers, construct bill boards and other souvenirs to market all the Tourism Sites in the District	Sogakope, Xikpo	Lack of fliers and bill boards	Fliers and bill boards developed and constructed								10,000			√		STDA	GTA
Organise capacity building programme for players in the hospitality industry	Sogakope	Lack of capacity building programme for players in the hospitality industry	Capacity building was organized						20,000					√		STDA	GTA
Spot improvement of Avu Lagoon tourist site access road.	Dabala-Torsukpo road.	Poor access road to Avu Lagoon tourist site	Spot improvement made						50,000					√		STDA	Feed Roads Dep't
Provide for training and support to local entrepreneurs to help them	Sogakope	Lack of training and support to local entrepreneurs to help them	Training and support provided.					10,000.00	15,000.00		5,000.00			√		STDA	GTA/ Avu Lagoon CREMA

**2026 COMPOSITE ANNUAL ACTION PLAN: SOUTH DISTRICT ASSEMBLY**

establish and run tourism-related businesses, such as guiding services, traditional catering, and handicraft production		establish and run tourism-related businesses, such as guiding services,													
Construct INO. Tower for watching of Sitatunga, Monkeys and Birds at AVu-Lagoon Eco-Tourist site.	Torsukpo	Lack of Tower for watching Sitatunga, Monkeys and Birds at Avu-Lagoon Eco-Tourist site	1No. Tower for watching Sitatunga, Monkeys and Birds at Avu-Lagoon Eco-Tourist site constructed					100,000.00						STD A	GTA/ Avu Lagoon CREMA
Promote controlled, community-based tours for bird watching and observing the unique sitatunga (aquatic antelope) at Avu Lagoon CREMA	Torsukpo	Uncontrolled community-based tours for bird watching and observing the unique Sitatunga (Aquatic Antelope) at Avu-Lagoon CREMA	Controlled community-based tours for bird watching and observing the unique Sitatunga (Aquatic Antelope) at Avu-Lagoon CREMA				10,000		5,000.00		√			STD A	GTA/ Avu Lagoon CREMA

## 2026 COMPOSITE ANNUAL ACTION PLAN: SOUTH DISTRICT ASSEMBLY

Visitors' Centre.		Visitors' Centre	Visitors' Centre promoted													
Provide needed funds for community initiatives in tourism development	Entire District	Lack of funds for community initiatives in tourism development	Needed funds for community initiatives in tourism development provided					20,000		20,000		√			STD A	GTA
Support the World Tourism Day celebration activities	Torsukpo/Bludo	Routine activity	The world Tourism Day celebration activities supported					20,000		10,000		√			STD A	GTA

Objective: To Improve the capacity of FBOs and other actors in Agribusiness in marketing, standards, and other skills development by December, 2029; To provide needed extension services and storage facilities to reduce post-harvest losses to increase productivity by 20% at the end of 2029; and To facilitate access to subsidies credit facilities, irrigation dams, farm lands, farm inputs and implements by farmers (especially women) to increase production levels of crops by 20% in the District by 2029

Programmes: Capacity building of farmer-based organizations and other actors along the value chain in marketing, standards, and other skills development programme; Programme for infrastructure development in irrigation systems, farm roads and storage facilities.; Promote sustainable investment in livestock and poultry production programme and Promote access to affordable credit, farm inputs, implements and farm lands programme

Project	Location	Baseline	Output Indicator	Time Frame				GOG	Cost				Project Status		Implementing Institution/ Department	
				Q 1	Q 2	Q 3	Q 4		DACF	DAC F-RFG	IGF	Others	New	Ongoing	Lead	Collaborating
Provide needed financial support for	District wide	Routine activity	Needed financial support for the						100,000		10,000		√		Agric Dep't	STDA

**2026 COMPOSITE ANNUAL ACTION PLAN: SOUTH DISTRICT ASSEMBLY**

the implementation of Feed Ghana Flagship programme			implementation of Feed Ghana Flagship programme provided												
Provide needed funds to build the capacity of farmer-based organizations and other actors along the value chain in marketing, standards, and other skills development .	Sogakope	Routine activity	Needed funds to build the capacity of farmer-based organizations and other actors along the value chain in marketing, standards, and other skills development provided					8,000				√		Agric Dep't	STDA
Provide needed funds to train farmers on sustainable agro-ecology and increase access to improved seed and breed varieties	Sogakope	Routine activity	Needed funds to train farmers on sustainable agro-ecology and increase access to improved seed and breed varieties provided					5,000			10,000	√		Agric Dep't	STDA
Liaise with land owners to secure access to agricultural lands for	Sogakope	Limited access to agricultural lands for farmers especially	Land owners liaised with to secure access to agricultural lands for					20,000		10,000		√		Agric Dep't	STDA

**2026 COMPOSITE ANNUAL ACTION PLAN: SOUTH DISTRICT ASSEMBLY**

farmers especially marginalised groups (Women)		marginalised groups (Women)	farmers especially marginalised groups (Women)													
Organize 12 technical review meetings	Sogakope	Routine activity	Technical review meetings organized					5,000	2,000				√		Agric Dep't	STDA
Train 100 women in climate smart agriculture technology for crops productivity	Sogakope	Lack of knowledge for women in climate smart agriculture technology for crop productivity	100 women trained in climate smart agriculture technology for crop productivity						8,000				√		Agric Dep't	STDA
Construct irrigation systems for all year-round production	Yorkutikpo/ Atsieve and Agbakope/ Lakpo,	Lack of irrigation system for all year-round production	Irrigation system for all year-round production constructed					3,000,000	500,000		30,000		√		MoA/Agric Dep't	STDA
Carry out home and farm visit to educate farmers on new farming methods	Entire District	Routine activity	Home and farm visit to educate farmers on new farming methods conducted					8,000					√		Agric Dep't	STDA
Provide needed veterinary services to poultry and livestock farmers	District wide	Routine activity	Needed veterinary services to poultry and livestock farmers provided					5,000					√		Agric Dep't	STDA

**2026 COMPOSITE ANNUAL ACTION PLAN: SOUTH DISTRICT ASSEMBLY**

Provide needed funds to facilitate the capacity building of fisher folks in the District	Sogakope	Limited capacity of fisher folks in the district	Needed fund to facilitate the capacity building of fisher folks in the district provided					10,000			2,000		√		Fisheries Unit	STDA
Repair irrigation pumps, maintain and extent irrigation canals and install solar panel for all year-round production	Dordoeko pe,	Irrigation pumps, canals and solar panels in bad condition	Irrigation pumps repaired, irrigation canals extended and solar panels installed for all year-round production					20,000	1,900,000.00	10,000			√		STDA	MoA/Agric Dep't
Rehabilitate 30KM farm roads to facilitate transport of farm produce	selected Farm roads	30km farm roads in bad condition	30km farm farms to facilitate transport of farm produce rehabilitated					40,000		10,000			√		STDA	Agric Dep't
Facilitate easy access to Credit, farm inputs and implement (Fertilizers, tractors etc.) through Central Government, NGOs and private dealers in farm inputs	District wide	Limited access to credit, farm inputs and implements	Easy access to credit, farm inputs and implements facilitated							5,000			√		STDA	NGOs/Agric Dep't/input Dealers

**2026 COMPOSITE ANNUAL ACTION PLAN: SOUTH DISTRICT ASSEMBLY**

and implements.																
Train farmer-groups on post-harvest management protocols in storage, transportation, processing, packaging and distribution of agricultural produce	Sogakope	Limited knowledge of farmer-groups on post-harvest management protocols in storage, transportation, processing, packaging and distribution of agricultural produce	Farmer-groups trained on post-harvest management protocols in storage, transportation, processing, packaging and distribution of agricultural produce					8,000					√		Agric Dep't	STDA
organize training programmes on green jobs opportunities for women/youth	Sogakope	Limited knowledge on green jobs opportunities for women/youth	Training programmes on green jobs opportunities for women/youth organized					5,000			15,000		√		Agric Dep't	STDA/ILO
Undertake Pest and Diseases control, and soil management	District wide	Routine activity	Pest and Diseases control, and soil management conducted					6,000					√		Agric Dep't	STDA
Procure needed logistics for extension services	Sogakope	Routine activity	Needed logistics for extension services procured					5,000	20,000		5,000		√		Agric Dep't	STDA

## 2026 COMPOSITE ANNUAL ACTION PLAN: SOUTH DISTRICT ASSEMBLY

Provide for maintenance of Vehicle and Motorbikes	Agric Department	Vehicles and motorbikes in bad condition	Maintenance of vehicles and motorbikes provided					5,000	20,000		5,000		√		Agric Dep't	STDA
Provide for monitoring and evaluation of programmes and projects of Agric Department	Agric Department	Routine activity	Monitoring and evaluation of programmes and projects of Agric Department provided					5,000	10,000		5,000		√		Agric Dep't	STDA
Refurbish Agric directorate	Sogakope	Agric Directorate in bad condition	Agric Directorate in bad condition						200,000		20,000		√		STDA	Agric Dep't
Procure office equipment and logistics for the operation of Agric directorate office	Sogakope	Limited office equipment and logistics for operation of Agric Directorate office	Office equipment and logistics for operation of Agric Directorate procured					15,000	40,000				√		STDA	Agric Dep't
Embark on dissemination of information on food prices and weather forecasts	Entire District	Routine activity	Dissemination of information on food prices and weather forecasts carried out					3,000					√		Agric Dep't	STDA
Conduct contact tracing of diseases diagnosed at the slaughter	Entire District	Routine activity	Contact tracing of diseases diagnosed at the slaughter house and on					6,000					√		Vet Unit/ Agric Dep't	STDA

## 2026 COMPOSITE ANNUAL ACTION PLAN: SOUTH DISTRICT ASSEMBLY

house and on poultry farms in District			poultry farms in the District conducted												
--	--	--	---	--	--	--	--	--	--	--	--	--	--	--	--

Objective: To improve quality of teaching and learning environment at all levels by December, 2029; To improve teaching and learning environment at all levels by increasing the school infrastructure, furniture and teaching and learning materials by 40% at the end of 2029 etc.

Programmes: Rehabilitation and expansion of inclusive school infrastructure Programme; Programme to enhance inclusive teaching and learning of science, technology, engineering and mathematics especially females to improve quality education at all levels and Programme to strengthen supervision, school management, discipline and accountability at all levels of the educational system

	Location	Baseline	Output Indicator	Time Frame				Cost					Project Status		Implementing Institution/ Department		
				Q 1	Q 2	Q 3	Q 4	GOG	DACF	DACF-RFG	IGF	Others	New	Ongoing	Lead	Collaborating	
Construct 2No. 3-Unit Classroom Blocks with WASH facilities, procure 300No. Mono Desk and landscape the surroundings with protective grasses and economic trees	Sogakope (E.P) and Akalove D/A Basic	Limited number of classroom blocks	2No.3-Unit classroom Blocks with WASH facilities completed						800,000	800,000						STDA	/MP
Complete 2No. 3-Unit Classroom Block	Agogbe D/A Basic and Awusakpe Sal. Army Primary	Limited Classroom blocks	2No. 3-Unit classroom block completed					300,000	150,000					√		STDA	GetFund

**2026 COMPOSITE ANNUAL ACTION PLAN: SOUTH DISTRICT ASSEMBLY**

Rehabilitate 2No. 3-Unit classroom Blocks	Agota (JHS) and Dorkploame ,	Classroom blocks in bad condition	2No. 3-Unit classroom block rehabilitated					100,000				√		MP	STDA
Construct 2No. 2-Unit KG Classroom Blocks with WASH facilities, procure 80No. Desk each and landscape the surroundings with protective grasses and economic trees	Agordomi and Dedo,	Lack of KG classroom block	2No. 2-Unit KG classroom block constructed					700,000	700,000			√		STDA	MP
Procure & distribute 300NO. of Tables and chairs 700 pieces of mono desks, 900 pieces of dual desks, 70 pieces of teachers' tables and 140 pieces of teachers' chairs for JHS, Primary Schools and Teacher respectively	Entire Schools	Limited furniture for JHS, Primary Schools and Teachers in the district	300No. of tables and chairs, 700 pieces of mono desks, 900 pieces of dual desk, 70 pieces of teachers' tables and 140 pieces of teachers' chairs procured for JHS, Primary and Teachers respectively					1,800,000				√		STDA	MP
Construct ICT Lab with	Sogakope	Lack of ICT lab	ICT Lab with ancillary					700,000		700,000		√		STDA	MP

**2026 COMPOSITE ANNUAL ACTION PLAN: SOUTH DISTRICT ASSEMBLY**

ancillary equipment and furniture			equipment and furniture constructed											
Rehabilitate teachers bungalow	Agbakope	Teachers bungalow in bad condition	Teachers bungalow rehabilitated				100,00						MP	STDA
Provide financial support to all boys and girls with Special Needs in schools	Entire district	Routine activity	Financial support to all boys and girls with special Needs in schools provided			10,000	10,000				√		STDA	SWCD/MP
Provide scholarship awards to PWDs in higher education, including vocational training and information and communication s technology, technical, engineering and scientific programmes	Entire district	Routine activity	Scholarship awards to PWDs in higher education provided				20,000				√		STDA	SWCD/MP
To carry out community sensitization to increase girls retention in school	Entire district	High rate of school drop out by girls	Community sensitization to increase girls retention in school carried out			5,000	2,000				√		NCCE/ SWCD/ GES/CE A	STDA

**2026 COMPOSITE ANNUAL ACTION PLAN: SOUTH DISTRICT ASSEMBLY**

Provide needed logistics to Strengthen the delivery of counselling services in all schools to reduce indiscipline among students in the District	Entire district	High level of indiscipline among students in the district	Needed logistics to strengthen the delivery of counselling service sin all schools to reduce indiscipline among students in the district provided				8,000	5,000		2,000		√		NCCE/ SWCD/ GES	STDA
Provide needed support to facilitate the reenrollment of dropout boys and girls back into school	Entire district	Limited support to facilitate the reenrollmen t of dropout boys and girls back into school	Needed support to facilitate the reenrollment of dropout boys and girls back to school provided					5,000				√		CEA	STDA/GES
Organize periodic professional training programs to support the continuous upgrading of Teachers in the District	Sogakope	Routine activity	Periodic professional training programs to support the continuous upgrading of Teachers in the district conducted				25,000			5,000		√		GES	STDA/MP
Provide support for best teacher/worker award scheme	Sogakope	Routine activity	Best teacher/worker award scheme supported				5,000	25,000		5,000		√		GES	STDA/MP

**2026 COMPOSITE ANNUAL ACTION PLAN: SOUTH DISTRICT ASSEMBLY**

Organize Annual Orientation Programs for Newly Trained Teachers	Sogakope	Routine activity	Annual orientation programs for newly trained teachers conducted				10,000	10,000				√		GES	STDA/MP
Provide logistics for the effective supervision of Teachers in all schools in the District and for the successful	Sogakope	Routine activity	Logistics for the effective supervision of Teachers in all schools in the district provided				10,000	10,000				√		STDA	GES/MP
Provide logistics for the effective conduct of BECE Examination Annually	Sogakope	Routine activity	Logistics for the effective conduct of BECE Examination Annually provided					20,000		10,000		√		STDA	GES/MP
Provide funds for STMIE activities annually.	Entire district	Routine activity	Funds for STMIE activities annually provided					30,000,00		10,000				STDA	GES/MP
Provide funds for annual and biennial intra and inter-district sports activities respectively	Entire district	Routine activity	Funds for annual and biennial intra and inter-district sports activities respectively provided					25,000.00		10,000				GES	STDA/MP
Provide funds for biennial intra district cultural	Entire district	Routine activity	Funds for biennial intra district					20,000.00		5,000.00				GES	STDA/MP

**2026 COMPOSITE ANNUAL ACTION PLAN: SOUTH DISTRICT ASSEMBLY**

festival activities.			cultural festival activities provided											
Organize annual district stakeholders' engagement	Entire district	Routine activity	Annual district stakeholders' engagement organized				15,000.00		10,000				GES	STDA/MP
Provide needed funds to support my first day at school program	Entire district	Routine activity	Needed funds to support my first day at school program provided				5,000		5,000		√		STDA	GES/MP
Ensure adequate supply and timely distribution of teaching and learning materials	Entire district	Routine activity	Adequate supply and timely distribution of teaching and learning materials ensured			40,000	20,000		10,000		√		STDA	GES/MP
Expand and Refurbish district education office	Sogakope	District education office in bad condition	District education office expanded and refurbished				500,000.00				√		STDA	GES/MP

## 2026 COMPOSITE ANNUAL ACTION PLAN: SOUTH DISTRICT ASSEMBLY

Objective: To expand and improve health facilities including accommodation for health personnel to increase access to quality Health care delivery by 40% by December, 2029; To scale-up education campaign and institute disciplinary measures to reduce teenage pregnancy, drugs and substance abuse by 70% by end of December, 2029 etc.																
Programmes: Rehabilitation and expansion of inclusive Health infrastructure Programme; Enhancement of capacity for surveillance and management of health facilities Programme and Programme to improve maternal and adolescent reproductive health, reduce the rate of drugs and substance abuse																
Project	Location	Baseline	Output Indicator	Time Frame				GOG	Cost				Project Status		Implementing Institution/ Department	
				Q 1	Q 2	Q 3	Q 4		DACF	DACF -RFG	IGF	Others	New	Ongoing	Lead	Collaborating
Construct 3NO. CHPs Compound with Ancillary facilities and drilling mechanization of borehole	Agbeve, Yorkutikpo /Atsieve and Sokpoe,	Lack of CHPs compound	3No. CHPs compound with Ancillary facilities and drilling mechanization of borehole constructed						1,850,000	950,000	20,000		√		STDA/MP	GHS
Complete 2NO community initiated Health Centers	Kua and Dzebetato	Lack of health center	2No. community initiated Health Centers completed						500,000				√		MP	STDA/GHS
Construct OPD shed for health service delivery,	Dalive CHPS	Lack of OPD shed for health service delivery	OPD shed for health service delivery constructed							50,000			√		STDA	GHS
Rehabilitate 1NO Health facilities to improve health service delivery in the District	Dzogborve	Health facility in bad condition	1No. Health facility rehabilitated to improve health service delivery in the district						150,000				√		STDA	GHS

## 2026 COMPOSITE ANNUAL ACTION PLAN: SOUTH DISTRICT ASSEMBLY

Objective: To expand and improve health facilities including accommodation for health personnel to increase access to quality Health care delivery by 40% by December, 2029; To scale-up education campaign and institute disciplinary measures to reduce teenage pregnancy, drugs and substance abuse by 70% by end of December, 2029 etc.																
Programmes: Rehabilitation and expansion of inclusive Health infrastructure Programme; Enhancement of capacity for surveillance and management of health facilities Programme and Programme to improve maternal and adolescent reproductive health, reduce the rate of drugs and substance abuse																
Project	Location	Baseline	Output Indicator	Time Frame				GOG	Cost				Project Status		Implementing Institution/ Department	
				Q 1	Q 2	Q 3	Q 4		DACF	DACF -RFG	IGF	Others	New	Ongoing	Lead	Collaborating
Expand Sogakope District Hospital Emergency Ward with ancillary facilities	Sogakope	Overcrowding at the Sogakope District Hospital Emergency ward	Sogakope District Hospital Emergency ward expanded with ancillary facilities						300,000	700,000			√		STDA/MP	GHS
Provide funds for capacity building of health staff	Sogakope	Routine activity	Funds for capacity building of health staff provided					20,000	10,000				√		GHS	STDA
Facilitate the acquisition of the needed logistics and staff for an effective delivery of health services in the District	Sogakope	Limited logistics and staff for effective delivery of health services in the district	Acquisition of the needed logistics and staff for an effective delivery of health services in the district facilitated					20,000	50,000	20,000			√		GHS	STDA/MP
Sensitize the Public on the need to	Entire District	Limited knowledge	The public sensitized on the need					20,000		3,000			√		NHIS	STDA

## 2026 COMPOSITE ANNUAL ACTION PLAN: SOUTH DISTRICT ASSEMBLY

Objective: To expand and improve health facilities including accommodation for health personnel to increase access to quality Health care delivery by 40% by December, 2029; To scale-up education campaign and institute disciplinary measures to reduce teenage pregnancy, drugs and substance abuse by 70% by end of December, 2029 etc.																
Programmes: Rehabilitation and expansion of inclusive Health infrastructure Programme; Enhancement of capacity for surveillance and management of health facilities Programme and Programme to improve maternal and adolescent reproductive health, reduce the rate of drugs and substance abuse																
Project	Location	Baseline	Output Indicator	Time Frame				GOG	Cost				Project Status		Implementing Institution/ Department	
				Q 1	Q 2	Q 3	Q 4		DACF	DACF -RFG	IGF	Other s	Ne w	Ongoing	Lead	Collaborati ng
register with the National Health Insurance Scheme and how the scheme operates and provide logistics for its efficient operation		of the public on NHIS	to register eith NHIS and how the scheme operates and provide logistics for its efficient operation													
Conduct counselling and testing session (HIV, TB etc.) in the communities	Entire District	routine activity	Counselling and testing session (HIV, TB etc.) in the communities conducted					5,000	2,000				√		GHS	STDA
Organize public sensitization programme to further educate the public on the dangers associated	Entire District	Routine activity	Public sensitization programme to further educate the public on the dangers associated with					5,000	2,000				√		GHS	STDA/NC CE

## 2026 COMPOSITE ANNUAL ACTION PLAN: SOUTH DISTRICT ASSEMBLY

Objective: To expand and improve health facilities including accommodation for health personnel to increase access to quality Health care delivery by 40% by December, 2029; To scale-up education campaign and institute disciplinary measures to reduce teenage pregnancy, drugs and substance abuse by 70% by end of December, 2029 etc.																
Programmes: Rehabilitation and expansion of inclusive Health infrastructure Programme; Enhancement of capacity for surveillance and management of health facilities Programme and Programme to improve maternal and adolescent reproductive health, reduce the rate of drugs and substance abuse																
Project	Location	Baseline	Output Indicator	Time Frame				GOG	Cost				Project Status		Implementing Institution/ Department	
				Q 1	Q 2	Q 3	Q 4		DACF	DACF -RFG	IGF	Others	New	Ongoing	Lead	Collaborating
with stigmatization of infected and affected persons with HIV and AIDs			stigmatization of infected and affected persons with HIV and AIDs conducted													
Support the regular meeting of District AIDS Committee and integrate issues of TB and Sexual reproductive health in the agenda of the meetings	Sogakope	Routine activity	Regular meeting of District AIDS committee and the integration of issues of TB and Sexual reproductive health in the agenda of the meetings supported						52,000				√		GHS	STDA
Support the District Health Directorate to	Sogakope	Routine activity	District Health Directorate supported to effectively					5,000	2,000				√		GHS	STDA

## 2026 COMPOSITE ANNUAL ACTION PLAN: SOUTH DISTRICT ASSEMBLY

Objective: To expand and improve health facilities including accommodation for health personnel to increase access to quality Health care delivery by 40% by December, 2029; To scale-up education campaign and institute disciplinary measures to reduce teenage pregnancy, drugs and substance abuse by 70% by end of December, 2029 etc.																	
Programmes: Rehabilitation and expansion of inclusive Health infrastructure Programme; Enhancement of capacity for surveillance and management of health facilities Programme and Programme to improve maternal and adolescent reproductive health, reduce the rate of drugs and substance abuse																	
Project	Location	Baseline	Output Indicator	Time Frame				GOG	Cost				Project Status		Implementing Institution/ Department		
				Q 1	Q 2	Q 3	Q 4		DACF	DACF -RFG	IGF	Others	New	Ongoing	Lead	Collaborating	
effectively implement the elimination of the Mother to Child Transmission of HIV program			implement the elimination of the mother to child transmission of HIV program														
Provide needed logistics to scale-up diagnosis, patient education and counselling services for TB	Entire District	Routine activity	Needed logistics to scale-up diagnosis, patient education and counselling services for TB provided					5,000	2,000				√			GHS	STDA
Provide needed logistics and financial support to ensure prevention and	Entire District	Routine activity	Needed logistics and financial support to ensure prevention and management					20,000	5,000				√			GHS	STDA

## 2026 COMPOSITE ANNUAL ACTION PLAN: SOUTH DISTRICT ASSEMBLY

Objective: To expand and improve health facilities including accommodation for health personnel to increase access to quality Health care delivery by 40% by December, 2029; To scale-up education campaign and institute disciplinary measures to reduce teenage pregnancy, drugs and substance abuse by 70% by end of December, 2029 etc.																
Programmes: Rehabilitation and expansion of inclusive Health infrastructure Programme; Enhancement of capacity for surveillance and management of health facilities Programme and Programme to improve maternal and adolescent reproductive health, reduce the rate of drugs and substance abuse																
Project	Location	Baseline	Output Indicator	Time Frame				GOG	Cost				Project Status		Implementing Institution/ Department	
				Q 1	Q 2	Q 3	Q 4		DACF	DACF -RFG	IGF	Others	New	Ongoing	Lead	Collaborating
management of malaria cases			t of malaria cases provided													
Support and sustain immunization against killer diseases for all children under 2 in the District	Entire District	Routine activity	Immunization against killer diseases for all children under 2 in the district supported and sustained					5,000			3,000		√			GHS STDA/NGOs
Support the District Directorate to undertake Food and Nutrition Programme that increase access to Malnutrition prevention, detection and management	Entire District	Routine activity	Directorate to undertake Food and Nutrition Programme that increase access to malnutrition prevention, detection and management supported					10,000	2,000				√			GHS STDA

## 2026 COMPOSITE ANNUAL ACTION PLAN: SOUTH DISTRICT ASSEMBLY

Objective: To expand and improve health facilities including accommodation for health personnel to increase access to quality Health care delivery by 40% by December, 2029; To scale-up education campaign and institute disciplinary measures to reduce teenage pregnancy, drugs and substance abuse by 70% by end of December, 2029 etc.																	
Programmes: Rehabilitation and expansion of inclusive Health infrastructure Programme; Enhancement of capacity for surveillance and management of health facilities Programme and Programme to improve maternal and adolescent reproductive health, reduce the rate of drugs and substance abuse																	
Project	Location	Baseline	Output Indicator	Time Frame				GOG	Cost				Project Status		Implementing Institution/ Department		
				Q 1	Q 2	Q 3	Q 4		DACF	DACF -RFG	IGF	Other s	Ne w	Ongoing	Lead	Collaborati ng	
Organize Annual Public Education programmes to sensitize the public on healthy diets and lifestyles	Entire District	Routine activity	Annual Public education programmes to sensitize the public on healthy diets and lifestyles conducted					8,000						√		GHS	STDA
Support District Health Directorate school Health team to conduct school health activities	Entire District	Routine activity	Health Directorate school Health team supported to conduct school health activities					5,000			2,000			√		GHS	STDA
Organize targeted public education programmes at Health Facilities to sensitize mothers and	Entire District	Routine activity	Targeted public education programmes at Health Facilities to sensitize mothers and the public					4,000						√		GHS	STDA

## 2026 COMPOSITE ANNUAL ACTION PLAN: SOUTH DISTRICT ASSEMBLY

Objective: To expand and improve health facilities including accommodation for health personnel to increase access to quality Health care delivery by 40% by December, 2029; To scale-up education campaign and institute disciplinary measures to reduce teenage pregnancy, drugs and substance abuse by 70% by end of December, 2029 etc.																	
Programmes: Rehabilitation and expansion of inclusive Health infrastructure Programme; Enhancement of capacity for surveillance and management of health facilities Programme and Programme to improve maternal and adolescent reproductive health, reduce the rate of drugs and substance abuse																	
Project	Location	Baseline	Output Indicator	Time Frame				GOG	Cost				Project Status		Implementing Institution/ Department		
				Q 1	Q 2	Q 3	Q 4		DACF	DACF -RFG	IGF	Others	New	Ongoing	Lead	Collaborating	
the public on how to reduce malnutrition among children and adults			on how to reduce malnutrition among children and adults conducted														
Organize Health education Programmes for girls in school on adolescent reproductive health	Entire District	Routine activity	Health education programmes for girls in school on adolescent reproductive health conducted					4,000	2,000		1,000		√			GHS	STDA/NC CE
Organize Health education Programmes for mental health related issues in the District	Entire District	Routine activity	Health education programmes for mental health related issues in the district conducted					5,000	4,000		1,000		√			GHS	STDA/NC CE

## 2026 COMPOSITE ANNUAL ACTION PLAN: SOUTH DISTRICT ASSEMBLY

Objective: To increase access to adequate and potable water supply to all by 90% by December, 2029; To improve access to sanitation equipment and facilities which are physical and gender friendly to reduce sanitary related diseases for all in the District by 80% by December, 2029																
Programmes: Programme to expand and rehabilitate inclusive drainage system, water and sanitation facilities and Scale-up sensitisation campaigns to promote proper sanitation management, handwashing and hygiene practices particularly among children programme																
Project	Location	Baseline	Output Indicator	Time Frame				GO G	Cost				Project Status		Implementing Institution/ Department	
				Q 1	Q 2	Q 3	Q 4		DACF	DAC F-RFG	IGF	Other s	Ne w	Ongoing	Lead	Collaborating
Monitor sanitation activities & collect data on water and sanitation facilities	Entire District	Routine activity	Sanitation activities & data collection on water and sanitation facilities monitored						6,000		2,000		√		STDA	
Construct 4No. Public Pounds in each Area Council	All Area Council capitals	Lack of public pounds in the Area Councils	4No. public pounds in each Area Council constructed						120,000		10,000		√		STDA	
Construct 1No. 6-Unit WASH facility with changing room for visitors	Sogakope (District Assembly premise	Limited WASH facility in Sogakope (District Assembl	1No. 6-Unit WASH facility with changing room for						200,000				√		STDA	

**2026 COMPOSITE ANNUAL ACTION PLAN: SOUTH DISTRICT ASSEMBLY**

		y premise)	visitors construct ed												
Acquire land for cemetery, solid and liquid waste disposal	Hlevi	Lack of land for cemetery, solid and liquid waste disposal	Land for cemetery, solid and liquid waste disposal acquired					200,000				√		STDA	
Procure sanitation equipment & cleaning consumables	Sogakope	Limited sanitation equipment & cleaning consumables	Sanitation equipment & cleaning consumables procured					10,000		10,000		√		STDA	
Provision for Fumigation exercise	Entire District	Routine activity	Fumigation exercise conducted					366,275.00				√		STDA	Zoomlion Company Ltd
Supervise cleaning of public places/observe sanitation day & air pollution	Entire District	Routine activity	Cleaning of public places/observing sanitation day & air pollution supervised					50,000		5,000		√		STDA	Assembly members
Provide needed funds for Sanitation Improvement Package (SIP)	Entire District	Routine activity	Needed funds for Sanitation Improvement					387,205.00				√		STDA	Zoomlion Company Ltd

**2026 COMPOSITE ANNUAL ACTION PLAN: SOUTH DISTRICT ASSEMBLY**

			Package (SIP) provided												
Conduct sanitary inspections of residential, hospitality, and food service facilities and educate the public on WASH practices and pollution prevention	Entire District	Routine activity	Sanitary inspections of residential, hospitality, and food service facilities and educate the public on WASH practices and pollution prevention conducted						5,000		√			STDA	GHS
Procure 10No.Refuse Containers and 200 dust bins	Selected Communities	Limited Refuse Container and dustbins	10No. Refuse Containers and 200 dust bins procured					200,000			√			STDA	Zoomlion Company Ltd
Undertake food hygiene & conduct medical screening for food & water vendors	Entire District	Routine activity	Food hygiene & medical screening for food and water						5,000		√			STDA	GHS

**2026 COMPOSITE ANNUAL ACTION PLAN: SOUTH DISTRICT ASSEMBLY**

			vendors conducted												
Support CLTS programme	Entire District	Routine activity	CLTS programme supports					86,520.00				√		STDA	NGOs
Rehabilitate 1No. Public Toilet at Sogakope Market	Sogakope Market	Public Toilet at Sogakope Market in bad condition	1No. Public Toilet at Sogakope Market rehabilitated					278,426.62				√		STDA	
Drill and mechanize 10NO. boreholes	Dendo, Kua, Alikekope Agogbe, Tordzinu/Tsavanya, Hlevi/Tokl okpo and four selected Education and Health facilities	Lack of potable water	10No. boreholes drilled and mechanized					500,000				√		STDA	
Procure 40No. Poly-tanks for Communities and institutions.	Selected communities and Institutions	lack of water storage system	40No. Poly-tanks for communities and institutions procured					600,000				√		STDA	
Extend Sogakope Ghana Water system to 6No. communities	Kpotame, Dabala, Dalive, Tefle,	Lack of potable water	Sogakope Ghana Water system extended					896,852				√		STDA	GWL

**2026 COMPOSITE ANNUAL ACTION PLAN: SOUTH DISTRICT ASSEMBLY**

	Fievie, Dikato, ,		to 6No. communi ties												
Completion of 3No. WC toilet facilities under CODA.	Vume, Dabala SHS, Combo-Tech	Lack of Toilet facility	3No. WC toilet facility under CODA complete d					240,000				√		STDA	DSU
Mobilize, register and conduct training for scrap dealers on how to operate and handling of E-waste	Sogakope	Limited knowled ge of scrap dealer on how to operate and handle E-waste	Training for scrap dealers on how to operate and handle E-waste conducte d and participa nts registere d					10,000				√		STDA	DSU
Update of District DESSAP	Sogakope	Routine activity	District DESSAP updated							5,000		√		DEHU	DSU
Organize School Health Education on environmental health	Sogakope	Routine activity	School Health educatio n on environm ental health organize d							5,000		√		DEHU	GHS/NCCE

## 2026 COMPOSITE ANNUAL ACTION PLAN: SOUTH DISTRICT ASSEMBLY

Project	Location	Baseline	Output Indicator	Time Frame				GOG	Cost				Project Status		Implementing Institution/ Department	
				Q1	Q2	Q3	Q4		DACF	DAC F-RFG	IGF	Others	New	Ongoing	Lead	Collaborating
Objective: To facilitate, incentivize and create socio-economic opportunities for PWDs to develop and utilize their potential in the District by close of 2029.																
<b>Programmes:</b> Programme to improve economic opportunities for PWDs and Programme to create enabling environment for active participation and equal inclusion of PWDs especially women in socio-economic development																
Support the Coordination and disbursement of poverty alleviation funds to ensure that 40% of the amount are received by women for enterprise development	Sogakope	Routine activity	Disbursement of poverty alleviation funds to ensure that 40% of the amount are received by women for enterprise development supported and coordinated					5,000	5,000		2,000		√		SWCD/GEA	STDA
Organize sensitization programs for PWDs artisans, farmers and other tradesmen on how to form and maintain associations	Entire District	Routine activity	Sensitization programs for PWDs artisans, farmers and other tradesmen on how to form and maintain association conducted					5,000	5,000		2,000		√		SWCD/GEA	STDA/SEN D-Ghana
Provide needed	Sogakope	Lack of logistics and	Needed logistic s and funds to					5,000	5,000		2,000		√		GEA/BRC	STDA/SWCD

**2026 COMPOSITE ANNUAL ACTION PLAN: SOUTH DISTRICT ASSEMBLY**

logistics and funds to facilitate apprenticeship and employable skill training for out-of-school PWD youth and graduates under GEA/BRC programme		funds to facilitate apprenticeship and employable skill training for out-of-school PWD youth and graduates under GEA/BRC programme	facilitate apprenticeship and employable skill training for out-of-school PWD youth and graduates under GEA/BRC programme provided												
Provide PWDs with material / equipment and start-up Capital to ensure that at least 40% of the beneficiaries are women.	Entire District	Routine activity	PWDs provided with materials/equipment and start-up capital to ensure that at least 40% of the beneficiaries are women					250,000		2,000		√		SWCD/PWD/Federation	STDA
Objective: To create enabling environment for active participation and equal inclusion of PWDs in all dimensions of development in the District by 2029															
Programmes: implement interventions reduce poverty and eradicate inequalities among vulnerable people programme and Programme to strengthen monitoring and evaluation of social protection interventions															
Undertake Annual Public Sensitization program to Educate women and support them to actively participate in political activities and	Entire District	Routine activity	Annual public sensitization program to educate women and support them to actively participate in political activities and to take leadership roles in the communities and					2,000		2,000		√		SWCD/NCCE	STDA

## 2026 COMPOSITE ANNUAL ACTION PLAN: SOUTH DISTRICT ASSEMBLY

to take leadership roles in the communities and in politics			in politics undertaken												
Provide needed funds to support women especially women with disabilities to seek for elective positions in the District	Entire District	Lack of funds to support women especially women with disabilities to seek for elective positions in the District	Needed funds to support women especially women with disabilities to seek for elective positions in the district provided					10,000		2,000	20,000	√		SWCD/NCCE	STDA/NGOs
Objective: To prioritize and embark on programmes and measures to improve participation of women in local levels of local governance including plan and budget preparation, political positions by 20% at the end of 2029.															
<b>Programmes:</b> Programme to promote women participation in local governance systems and programme to reduce gender inequalities in access to education, health, and skills training in income generating activities for vulnerable women															
Provide needed funds to support the effective coordination and monitoring of gender programs in the District	Entire District	Lack of funds to support the effective coordination and monitoring of gender programs in the District	Needed funds to support the effective coordination and monitoring of gender programs in the district provided					2,000		2,000	5,000	√		STDA	SWCD/NCCE/ Gender Desk Unit.
Organize training sessions for decentralized departments and sub-structures on	Sogakope	Limited knowledge for decentralized departments and sub-structures on	Training sessions for decentralized departments and sub-structures on vulnerability/Gender responsive planning and					20,000		5,000	10,000	√		STDA/Gender Desk Officer	VRCC/GIZ

**2026 COMPOSITE ANNUAL ACTION PLAN: SOUTH DISTRICT ASSEMBLY**

vulnerability /Gender responsive planning and budgeting		vulnerability /Gender responsive planning and budgeting	budgeting organized												
Provide needed financial support for implementation of Gender related activities to reduce gender inequality in the District	Entire District	Lack of financial support for implementation of Gender related activities to reduce gender inequality in the District	Needed financial support for implementation of Gender related activities to reduce gender inequality in the district provided					30,000		5,000	10,000	√		STDA/Gender Desk Officer	VRCC/GIZ
Objective: To facilitate, promote and implement programmes that Prevent and protect children from all forms of violence, abuse, neglect and exploitation in the District by December, 2029															
Programme: Programme to promote child rights, Protection and development															
Monitor and facilitate the prosecution of offenders of child labour and trafficking	Entire District	Routine activity	Prosecution of offenders of child labour and trafficking monitored and facilitated					2,000		3,000		√		STDA/SW CD	VRCC/NG Os
Provide funds and logistical support to manage cases receive on non-child maintenance, abuse, custody, paternity and family	Entire District	Lack of funds and logistical support to manage cases receive on non-child maintenance, abuse, custody, paternity and family	Funds and logistics to manage cases received on non-child maintenance, abuse, custody, paternity and family reconciliation provided					2,000	8,000	3,000		√		STDA/SW CD	VRCC/NG Os

**2026 COMPOSITE ANNUAL ACTION PLAN: SOUTH DISTRICT ASSEMBLY**

reconciliation		reconciliation														
Organize Radio Education and sensitization of Public on all forms of Child abuse especially defilement	Entire District	Limited knowledge of public on all forms of child abuse especially defilement	Radio Education and sensitization of public on all forms of child abuse especially defilement conducted					2,000	8,000		3,000		√		NCCE/SWCD	NGOs/STDA
Provide financial support to facilitate the reintegration and monitor re-unified children from Residential Homes (RHC) with their families	Entire District	Lack of financial support to facilitate the reintegration and monitor re-unified children from Residential Homes (RHC) with their families	Financial support to facilitate the reintegration and monitor re-unified children from Residential Homes (RHC) with their families provided					5,000	10,000		3,000		√		SWCD	NGOs/STDA
Provide the required logistics and secretarial services for the implementation of the District Integrated social services programme for children,	Sogakope	Lack of needed logistics and secretarial services for the implementation of the District Integrated social services programme for children,	Needed logistics and secretarial services for the implementation of the District Integrated social services programme for children, families and vulnerable adults provided					5,000	10,000		3,000		√		STDA	NGOs/SWCD

**2026 COMPOSITE ANNUAL ACTION PLAN: SOUTH DISTRICT ASSEMBLY**

families and vulnerable adults		families and vulnerable adults													
Procure the needed logistics and funds for the effective functioning of Child Panel and family courts including all related issues	Sogakope	Lack of needed logistics and funds for the effective functioning of the Child Panel and family courts including all related issues	The needed logistics and funds for the effective functioning of Child Panel and family courts including all related issues procured					4,000		3,000		√		STDA	NGOs/SWCD
Provide the needed logistics for the monitoring of child labour and child abuse cases and facilitate the successful prosecution of offenders	Entire District	Limited logistics for monitoring of child labour and child abuse cases and facilitate the successful prosecution of offenders	Needed logistics for the monitoring of child labour and child abuse cases and facilitate the successful prosecution of offenders provided					2,000	2,000	1,000		√		STDA	NGOs/SWCD
Conduct home visits and organize Neighborhood Awareness Campaigns to sensitize families about child protection	Entire District	Lack of awareness of families about child protection and associated rules governing child protection	Home visit and neighbourhood awareness campaigns to sensitize families about child protection and associated rules governing child protection					4,000		3,000		√		SWCD/NCCE	NGOs/STDA

**2026 COMPOSITE ANNUAL ACTION PLAN: SOUTH DISTRICT ASSEMBLY**

and associated rules governing child protection			conducted and organized												
Provide needed technical and logistical support for the Department of Social Welfare and Community Development to implement child related policies and regulations	Sogakope	Limited technical and logistical support for the Department of Social Welfare and Community Development to implement child related policies and regulations	Needed technical and logistical support for the Department of Social Welfare and Community Development to implement child related policies and regulations provided					10,000		5,000		√		STDA	SWCD/NGOs
Engage or monitor the operation of CSO,RHC and children in their care	Entire District	Routine activity	Operation of CSO, RHC and children in their care monitored or engaged					3,000		5,000		√		STDA	SWCD/VRCC
Objective: To reduce all forms of poverty disparities and injustice in all dimensions by 20% in the District by the end of 2029;															
<b>Programmes:</b> implement interventions reduce poverty and eradicate inequalities among vulnerable people programme and Programme to strengthen monitoring and evaluation of social protection interventions															
Provide needed logistics and technical support required to continue the effective implementation of the	Entire District	Limited logistics and technical support required to continue the effective implementation of the	Needed logistics and technical support required to continue the effective implementation of the LEAP and other vulnerability					5,000		3,000		√		STDA	SWCD/VRCC

**2026 COMPOSITE ANNUAL ACTION PLAN: SOUTH DISTRICT ASSEMBLY**

ion of the LEAP and other vulnerability Programs		LEAP and other vulnerability programs	programs provided												
Provide needed logistics and funds for the District LEAP implementation committee meetings	Sogakope	Limited logistics and funds for the District LEAP implementation committee meetings	Needed logistics and funds for the District LEAP implementation committee meetings provided						5,000	2,000	√			STDA	NGOs
Support the Implementation of programs that ensure economic well-being of the aged in the District	Entire District	Routine activity	Implementation of programs that ensure economic wellbeing of the aged in the District supported						5,000	2,000	√			STDA	NGOs
Conduct quarterly monitoring of beneficiaries of PWDs' fund	Entire District	Routine activity	Quarterly monitoring of beneficiaries of PWDs' fund conducted				4,000		4,000		√			SWCD	STDA
Provide needed logistics to organize periodic meetings of the Disability	Sogakope	Routine activity	Needed logistics to organize periodic meetings of the Disability Fund Management Committee to disburse the 3%				4,000		4,000		√			SWCD/PWD/ Federation	STDA

**2026 COMPOSITE ANNUAL ACTION PLAN: SOUTH DISTRICT ASSEMBLY**

Fund Management Committee to disburse the 3% DACF allocation to the PWDs			DACF allocation to the PWDs provided												
Support Social Welfare and Community Development to develop and manage Electronic Based Database of Vulnerable groups and issues (Use GIS to produce live maps)	Sogakope	No electronic based Database of Vulnerable groups and issues by Social Welfare and Community Development	Electronic based Database of Vulnerable groups and issues developed and support provided to manage					4,000			√		SWCD	STDA/SD	
Provide logistics and technical support for the `continues implementation and monitoring of Care Reform Initiatives( CRI)	Entire District	Limited logistics and technical support for the continues implementation and monitoring of CRI	Logistics and technical support for the continues implementation and monitoring of CRI provided				10,000	4,000	5,000		√		SWCD	STDA	
Organize monthly radio	Entire District	Routine activity	Monthly radio programmes to educate the				1,000	4,000			√		SWCD/NCCE	STDA	

**2026 COMPOSITE ANNUAL ACTION PLAN: SOUTH DISTRICT ASSEMBLY**

programmes to educate the public and create their awareness against stigma, abuse, discrimination, and harassment of the vulnerable			public and create awareness against stigma, abuse, discrimination, & harassment of vulnerable organized												
Integrate Disability Accesses and facilities to all Public Buildings and ensure that all new private properties for commercial purposes are designed with the required facilities and accesses for the PWDs	Entire District	Inaccessibility of public facilities by PWDs	All public buildings and new private properties for commercial purposes integrates Disability Accesses					10,000		4,000		√		STDA	Works Dep't/SWC D
Organize capacity building programmes for PWDs on governance	Sogakope	Limited capacity of PWDs on governance and democracy	Capacity building programmes for PWDs on governance and democracy organized					10,000		4,000		√		STDA	VRCC

## 2026 COMPOSITE ANNUAL ACTION PLAN: SOUTH DISTRICT ASSEMBLY

and democracy															
Provide needed logistics and funds to DSWCD and the Association of Persons with Disability to perform its functions effectively	Sogakope	Limited logistics and funds for DSWCD and the Association of Persons with Disability	Needed logistics and funds provided to DSWCD and the Association of Persons with Disability					30,000		4,000		√		STDA	

### DIMENSION/THEMATIC AREA: ENVIRONMENT, INFRASTRUCTURE AND HUMAN SETTLEMENTS

Project	Location	Baseline	Output Indicator	Time Frame				GOG	Cost				Project Status		Implementing Institution/ Department	
				Q 1	Q 2	Q 3	Q 4		DACF	DAC F-RFG	IGF	Others	New	Ongoing	Lead	Collaborating
Objective: To increase access to improved road infrastructure to boost transportation system for social and economic development in the District by December, 2029; To reduce accidents resulting from over speeding by commuters (motorist) by 80% by end of December, 2029																
Programme: Programme to expand, maintain and develop road infrastructure system devoid of accidents for socio-economic development																
Reshape 20.0km deplorable feeder roads (District Road Improvement Programme)	Selected roads	Feeder roads not in good shape	20.0km deplorable feeder roads (District Road Improvement Programme) reshaped					250,000	400,000				√		STDA	Feeder Roads Dep't/MP
Opening of 10km access roads in Sogakope Township and other major	Selected roads	Limited access to some communities	10km access roads in Sogakope Township and other major						300,000				√		STDA	MP

## 2026 COMPOSITE ANNUAL ACTION PLAN: SOUTH DISTRICT ASSEMBLY

Project	Location	Baseline	Output Indicator	Time Frame				GOG	Cost				Project Status		Implementing Institution/ Department		
				Q 1	Q 2	Q 3	Q 4		DACF	DAC F-RFG	IGF	Othe rs	Ne w	Ongoi ng	Lead	Collaborat ing	
towns in the District (District Road Improvement Programme)			towns in the district opened														
Construct 2NO. culverts in the District	Adutor and Kua	Broken culverts	2No. culverts constructed in the district						100,000					√		STDA	Feeder Roads Dep't/MP
Erect road signage & construct speed Humps and revenue barriers	All prime roads in the District	Limited road signage & speed humps and revenue barriers	Road signage erected & speed humps constructed					20,000	40,000					√		STDA	Ghana Highways Dep't
Organize public education for all categories of road users on safety measures	Entire District	lack of awareness of road users on safety measures	Public education for all categories of road users on safety measures conducted						10,000		2,000			√		MTTU	STDA/NC CE
Update Asset Register for the Assembly	Sogakope	Routine activity	Asset Register for the Assembly updated								3,000			√		STDA	Works Dep't
Construct drains in Sogakope and other 3 communities	Sogakope, Vume, Tefle and Sokpoe	Frequent flooding	Drains in Sogakope and other 3 communities constructed					500,000	100,000					√		STDA	Ghana Highways Dep't/Feeder roads Dep't

## 2026 COMPOSITE ANNUAL ACTION PLAN: SOUTH DISTRICT ASSEMBLY

Project	Location	Baseline	Output Indicator	Time Frame				GOG	Cost				Project Status		Implementing Institution/ Department		
				Q 1	Q 2	Q 3	Q 4		DACF	DAC F-RFG	IGF	Othe rs	Ne w	Ongoi ng	Lead	Collaborat ing	
Construct 2No. foot bridges in selected communities for easy access	Anaosukope Combo-Tech	Difficulty in accessing selected communities	2No. foot bridges in selected communities constructed						50,000					√		STDA/MP	Works Dep't
Dredge 2No. streams in the District	Adutor and Agogbe,	Aquatic weeds covering the streams	2No. streams dredged in the District					200,000	200,000					√		STDA	WRC/VR A/ Hydrology Dep't
Objective: To improve the long span of road infrastructure to about 70% through routine maintenance in the District by December, 2029																	
Programme: Programme to maintain road infrastructure system for socio-economic development																	
Maintenance of drains in Sogakope and Dabala township	Sogakope and Dabala	Limited drains in Sogakope and Dabala township	Drains in Sogakope and Dabala township maintained						40,000			20,000		√		STDA	Works Dep't
Extend electricity connection to communities without lights	Agorta (Havedome), Adutor (Jerusalem and Kpota), Alikekope, Susunkporkope, Gotakpodzi, Atiwukope, DCKope-Morkordze and Xikpo new town.	No electricity connection	Electricity connection extended to communities without light					1,100,000	200,000			10,000		√		ECG/Min. of Energy	STDA/MP

## 2026 COMPOSITE ANNUAL ACTION PLAN: SOUTH DISTRICT ASSEMBLY

Project	Location	Baseline	Output Indicator	Time Frame				GOG	Cost				Project Status		Implementing Institution/ Department		
				Q 1	Q 2	Q 3	Q 4		DACF	DAC F-RFG	IGF	Othe rs	Ne w	Ongoi ng	Lead	Collaborat ing	
Maintain road signage & speed humps to reduce road accidents in the District	Entire District	Limited signage & speed humps	Road signage & speed humps maintained								15,000			√		STDA	Works Dep't
Provide funds for Operation and Maintenance Plan for regular operations and periodic planned maintenance of all Assembly Assets	Sogakope	Routine activity	Funds for Operation and Maintenance Plan for regular operations and periodic planned provided						150,000		50,000			√		STDA	Works Dep't
Objective: To Accelerate the preparation, revision and implementation of Spatial Plans to reduce by 60% non-conformity of building codes and standards at all levels by December, 2029																	
Programme: Programme to improve and sustain spatially integrated development of human settlements and efficient and effective land administration																	
Continue the process of Street Naming and Property Addressing System in the District	Entire District	Ongoing activity	Street Naming and Property Addressing System in the district continued					30,000	20,000		5,000			√		STDA	PPD/LUS PA
Conduct regular monitoring and sensitization on spatial planning and management	Entire District	Routine activity	Regular monitoring and sensitization on spatial planning and management conducted								6,000			√		PPD	STDA

## 2026 COMPOSITE ANNUAL ACTION PLAN: SOUTH DISTRICT ASSEMBLY

Project	Location	Baseline	Output Indicator	Time Frame				GOG	Cost				Project Status		Implementing Institution/ Department		
				Q 1	Q 2	Q 3	Q 4		DACF	DAC F-RFG	IGF	Othe rs	Ne w	Ongoi ng	Lead	Collaborat ing	
Establish database for spatial planning and management	Assembly	No database for spatial planning and management	Database for spatial planning and management established								20,000			√		PPD	STDA
Prepare spatial development framework, structure & local plans	Sokpoe, Sogakope, Fievie, Vume, Tademe, Agorkpo Hlevi, Kpekpo & others	No prepared spatial development framework, structure & local plan	Spatial development framework, structure & local plans prepared						60,000		10,000	50,000		√		STDA	GIZ/LUSP A
Prosecute defaulters on building codes and standards to ensure proper human settlements	Entire District	Routine activity	Defaulters on building codes and standards to ensure proper human settlements prosecuted								5,000			√		STDA	Courts
Plant Avenue trees in selected streets in Sogakope township	Sogakope	Limited shade for pedestrians	Avenue trees planted in selected streets in Sogakope township						20,000		10,000			√		STDA	PPD/ Forestry Comm.
Carry out landscaping &	Assembly premises	Routine activity	Landscaping &						20,000		10,000			√		STDA	PPD/

## 2026 COMPOSITE ANNUAL ACTION PLAN: SOUTH DISTRICT ASSEMBLY

Project	Location	Baseline	Output Indicator	Time Frame				GOG	Cost				Project Status		Implementing Institution/ Department	
				Q 1	Q 2	Q 3	Q 4		DACF	DAC F-RFG	IGF	Othe rs	Ne w	Ongoi ng	Lead	Collaborat ing
beautification exercise on Assembly office complex			beautification exercise carried out													Forestry Comm.
<p>Objective: To reduce by 50% the induced human disasters and increase by 20% the adaptation to natural disasters with focus on protecting the poor and people in vulnerable situations in the District by the end of 2029 To increase the logistical and infrastructure requirement by 40% to response to disaster management related issues in the District by December, 2029; To scale-up awareness creation campaigns on disaster risk reduction</p> <p><b>Programme:</b> Disaster prevention, management and mitigation Programme and Conservation and management of environment Programme</p>																
Provide logistic for the operations of the Disaster Volunteer Groups	Sogakope	Limited logistics for operation of the Disaster Volunteer Groups	Logistics for the operation of the Disaster Volunteer Groups provided					15,000		5,000		√		NADMO	STDA	
organize training programme for NADMO staff on Rapid Rescue Response and managing on Volta River	Sogakope	Limited skills on rapid rescue response & management of Volta river by NADMO staff	NADMO staff trained on rapid rescue response & management of Volta river				10,000	10,000		5,000		√		NADMO	STDA/FC	
Educate public on climate change adaption, disaster risks reduction & mitigation	Entire District	Frequent disaster cases	Public educated on climate change adaption,				5,000.00	5,000.00				√		NADMO	STDA	

## 2026 COMPOSITE ANNUAL ACTION PLAN: SOUTH DISTRICT ASSEMBLY

Project	Location	Baseline	Output Indicator	Time Frame				GOG	Cost				Project Status		Implementing Institution/ Department	
				Q 1	Q 2	Q 3	Q 4		DACF	DAC F-RFG	IGF	Othe rs	Ne w	Ongoi ng	Lead	Collaborat ing
measures (rainstorm, windstorm, sand wining, deforestation, bush fire, flooding)			disaster risks reduction & mitigation measures (rainstorms, windstorm, sand wining, deforestation, bush fire, flooding)													
Conduct hazard mapping/identification of disaster-prone areas	Disaster-prone areas	Limited data on Disaster-prone areas	Disaster-prone areas mapped/identified					3,000.00	3,000.00				√		NADMO	STDA
Conduct monitoring and supervision of DVDs activities	Entire District	Routine activity	Monitoring and supervision of DVDs activities conducted					2,000	2,000.00		1,000		√		NADMO	STDA
Support disaster management & provide relief items to affected communities	Affected communities	Routine activity	Disaster management supported & relief items to affected communities provided						90,000		10,000		√		NADMO	STDA
Procure the needed logistics and adequate funds for effective	Sogakope	Limited logistics and inadequate funds for	Needed logistics procured & adequate funds						10,000		5,000		√		STDA	NAMO

## 2026 COMPOSITE ANNUAL ACTION PLAN: SOUTH DISTRICT ASSEMBLY

Project	Location	Baseline	Output Indicator	Time Frame				GOG	Cost				Project Status		Implementing Institution/ Department	
				Q 1	Q 2	Q 3	Q 4		DACF	DAC F-RFG	IGF	Others	New	Ongoing	Lead	Collaborating
operations of Disaster Prevention and Management Dep't		effective operations of Disaster Prevention and Management Dep't	provided for Disaster Prevention and Management Dep't													
Organize annual tree planting competitions in first and second cycle schools in the District	Entire District	Routine activity	Annual tree planting competitions organized					5,000			5,000		√		STDA	NAMO/GES/NCCE/WRC
Carry out Planting and maintenance of trees exercise along the banks of the Lower Volta River and other streams	Entire District	Deforestation along the banks of the Lower Volta River and other streams on the raise	Planting and maintenance of tree exercise carried out					50,000	5,000			20,000	√		WRC	STDA/NGOs/CREMAs/Forestry Comm.
Support afforestation activities in the District under the program of Tree for Life.	Entire District	Rampant depletion of vegetation	Afforestation activities in the district under the program of Tree for Life supported						30,000		10,000		√		NADMO	STDA
Organize sensitization	Entire District	Destruction of	Sensitization campaigns to					20,000	5,000			20,000	√		Forestry Comm.	STDA/NGOs/

**2026 COMPOSITE ANNUAL ACTION PLAN: SOUTH DISTRICT ASSEMBLY**

Project	Location	Baseline	Output Indicator	Time Frame				GOG	Cost				Project Status		Implementing Institution/ Department		
				Q 1	Q 2	Q 3	Q 4		DACF	DAC F-RFG	IGF	Others	New	Ongoing	Lead	Collaborating	
campaigns to ensure involvement of local communities in the management of Mangroves and wetlands		mangroves and wetlands by local communities	ensure involvement of local communities in managing Mangrove and wetlands organized														CREMAs/WRC
Integrate tree planting and landscaping as part of all Public Contracts meant to construct buildings or other forms of physical assets	Entire District	Protection of the natural environment	Tree planting and landscaping integrate to all public contracts							5,000		√			STDA	PPD/Works Dep't	
Support the activities of Avu Lagoon and Dusornu CREMA projects.	Avu Lagoon and Dusornu CREMA projects.	Destruction of natural environment and wildlife	Activities of Avu Lagoon and Dodurnu CREMA projects supported						6,000			25,000	√		CREMAs	STDA/Forestry Comm.	
Support green club in schools to promote woodlot development	Selected schools	low support of green club in schools	Green club in schools supported					10,000			2,000		√		WRC	NCCE/GE S	

## 2026 COMPOSITE ANNUAL ACTION PLAN: SOUTH DISTRICT ASSEMBLY

### GOVERNANCE, CORRUPTION AND PUBLIC ACCOUNTABILITY

Project	Location	Baseline	Output Indicator	Time Frame				GOG	Cost				Project Status		Implementing Institution/ Department	
				Q 1	Q 2	Q 3	Q 4		DACF	DAC F-RFG	IGF	Others	New	Ongoing	Lead	Collaborating
Objective: To increase access to improved office space, accommodation for staff of all departments by 20% for improved service delivery in the District by the end of 2029; To increase access to office materials and equipment for improved service delivery by 90% by the end of 2029; To improve the capacities of all departmental staff and Assembly members on plan preparation, implementation monitoring and evaluation to track and assess the impact of development programmes on the citizenry in the District by 2029																
<b>Programme: Programme to strengthen local governance systems and structures for improved service delivery</b>																
Organize capacity building training for Assembly members and staff of Assembly Governance, Corruption and Public Accountability	Sogakope	Routine activities	Capacity building training conducted						30,000		10,000		√		STDA	HRD
Provide needed funds for capacity building of Assembly staff	Sogakope	Routine activities	Funds provided for capacity building training						60,000		20,000		√		STDA	HRD
Provision to support NALAG Activities	Sogakope	Routine activity	NALAG Activities supported						93,671.00				√		STDA	PM
Organize Quarterly Heads of Department Meetings	Assembly	Routine activity	Quarterly Heads of Department Meetings conducted								8,000.00		√		STDA	
Celebrate Independence Day, Framers' Day, Republic	Sogakope	Routine activity	Independence Day, Farmers' Day,						200,000		100,000		√		STDA	GES/AGRIC DEP'T

## 2026 COMPOSITE ANNUAL ACTION PLAN: SOUTH DISTRICT ASSEMBLY

Project	Location	Baseline	Output Indicator	Time Frame				GOG	Cost				Project Status		Implementing Institution/ Department		
				Q 1	Q 2	Q 3	Q 4		DACF	DAC F-RFG	IGF	Others	New	Ongoing	Lead	Collaborating	
Day, Workers Day, etc			Republic Day, Workers Day, etc celebrations conducted														
Provide needed funds for 4No. Area Councils to maintain their offices, procure equipment/consumables, conduct quarterly meetings, sensitisation programmes and development projects.	All Area Councils	Inadequate logistics	All the Area Councils supported					60,000		50,000		√		STDA	All Area Councils		
Mobilize & engage communities on development issues affecting them	Entire District	Limited participation of people in development issues	Number of community meetings conducted					30,000		20,000		√		STDA			
Procure & service office equipment, logistics, stationery, consumables, protocol services and others for	Sogakope	Routine activity	Logistics provided for all department					150,000.00		40,000		√		STDA			

## 2026 COMPOSITE ANNUAL ACTION PLAN: SOUTH DISTRICT ASSEMBLY

Project	Location	Baseline	Output Indicator	Time Frame				GOG	Cost				Project Status		Implementing Institution/ Department		
				Q 1	Q 2	Q 3	Q 4		DACF	DAC F-RFG	IGF	Others	New	Ongoing	Lead	Collaborating	
departments of the District assembly																	
Maintain District assembly office assets, equipment, machines, furniture & fittings	Sogakope	District Assembly office assets, equipment, machines, furniture & fittings not in good condition	Assembly office assets, equipment, furniture & fittings maintained						600,000		400,000		√	√		STDA	
Maintenance and repairs of Assembly Vehicles	Sogakope	Assembly Vehicles not in good condition	Assembly Vehicles repaired & maintained						15,000.00		100,000		√	√		STDA	
Complete District Assembly office block (Phase II)	Sogakope	District Assembly office block (Phase II) under construction	District Assembly office block (Phase II) completed						500,000					√		STDA	Works Dep't
Renovate the office of Complementary	Sogakope	Office in bad condition	Complementary Education						200,000.00				√			STDA	CEA

## 2026 COMPOSITE ANNUAL ACTION PLAN: SOUTH DISTRICT ASSEMBLY

Project	Location	Baseline	Output Indicator	Time Frame				GOG	Cost				Project Status		Implementing Institution/ Department		
				Q 1	Q 2	Q 3	Q 4		DACF	DAC F-RFG	IGF	Others	New	Ongoing	Lead	Collaborating	
Education Agency and procure furniture and logistics for fully functional			Agency renovated														
Provide for implementation of MP's common fund Action Plan	Entire District	Routine Activity	MP's common fund utilized					500,000	1,250,000				√		MP	STDA	
Provide Adequate financial support self-help/community-initiated projects and counterpart funding for NGOs and Donor projects/programmes	Entire District	Routine Activity	self-help/community-initiated projects supported						250,000				√		STDA	MP	
Objective: To improve revenue mobilization both internal and external sources by 40% by December, 2029; To promote and improve transparent and accountable governance by December, 2029																	
<b>Programme: Programme to enhance transparent and accountable governance</b>																	
Conduct Fee Fixing Resolution and Budget hearing to enhance participatory budgeting, revenue and expenditure tracking	Sogakope and Dabala	Routine Activity	Fee Fixing Resolution and Budget hearing conducted						35,000		10,000		√		STDA	VRCC	

## 2026 COMPOSITE ANNUAL ACTION PLAN: SOUTH DISTRICT ASSEMBLY

Project	Location	Baseline	Output Indicator	Time Frame				GOG	Cost				Project Status		Implementing Institution/ Department	
				Q 1	Q 2	Q 3	Q 4		DACF	DAC F-RFG	IGF	Others	New	Ongoing	Lead	Collaborating
Carry out tax education & create awareness on fee-fixing resolution for SMEs & other stakeholders	Entire District	Routine Activity	Tax education carried out								5,000		√		STDA	NCCE
Collect data on ratable items, organize ratepayers' consultations and prepare 2026 FFR and RIAP.	Entire District	Data on ratable items, outdated	Data collected								15,000		√		STDA	
Objective: To improve citizens active participation in local governance system including, planning process and transparency and public accountability in the District by 2029																
Programme: Programme to Promote citizens active participation in local governance system including, planning process and transparency and public accountability																
Provide needed logistics and funds to support the District Cultural Centre and NCCE to Promote cultural activities in the District	Entire District	Lack of needed logistics and funds	Needed logistics and funds provided						15,000		5,000		√		STDA	NCCE/CNC
scale-up civic education and democratic literacy at all levels with a focus on youth, marginalized	Entire District								15,000		5,000		√		NCCE	STDA

## 2026 COMPOSITE ANNUAL ACTION PLAN: SOUTH DISTRICT ASSEMBLY

Project	Location	Baseline	Output Indicator	Time Frame				GOG	Cost				Project Status		Implementing Institution/ Department		
				Q 1	Q 2	Q 3	Q 4		DACF	DAC F-RFG	IGF	Others	New	Ongoing	Lead	Collaborating	
groups, and first-time voters																	
Educate/Sensitize the public on surveys in collaboration with GSS and NCCE	Entire District	Routine Activity	Education done						10,000		5,000			√		Statistical Dep't	NCCE
Organize inter-service/inter-sectoral collaboration and cooperation meeting among departments and other agencies in the District	Sogakope	Routine Activity	inter-service/inter-sectoral collaboration and cooperation meeting organized								15,000			√		STDA	All Dep'ts and Agencies
Support the People's Assembly concept to encourage citizens to participate in governance	Sogakope	Routine Activity	People's Assembly concept supported						10,000		10,000			√		NCCE	STDA
<b>Objective:</b> To improve peace and order for sustain economic growth in the District by December, 2029; To reduce burglary and other crimes levels by 50% by December, 2029																	
<b>Programme: Programme to improve citizens safety and security for socio-economic development</b>																	
Provide needed logistics for maintenance of security, law and order	Entire District	Lack of logistics for maintenance of security,	Logistics provided						150,000		40,000			√		STDA	Security Agencies

## 2026 COMPOSITE ANNUAL ACTION PLAN: SOUTH DISTRICT ASSEMBLY

Project	Location	Baseline	Output Indicator	Time Frame				GOG	Cost				Project Status		Implementing Institution/ Department		
				Q 1	Q 2	Q 3	Q 4		DACF	DAC F-RFG	IGF	Others	New	Ongoing	Lead	Collaborating	
		law and order															
Procure and maintain Street Light in the entire District	Entire District	Routine activity	Streetlights provided and maintained						120,000		20,000			√		STDA	Works Dep't
Form and provide needed logistics for Community Watch-Dog in all Electoral Areas in the District to help beef up security surveillance in the District	Entire District	Inadequate logistics for Community Watch-Dog	Logistics for Community Watch-Dog provided								10,000			√		STDA	GPS
Collaborate with relevant institutions to resolve boundary issue between South Tongu District and Ada East District	Entire District	Lack of collaboration with relevant institutions.	Boundary issue between South Tongu District and Ada East District resolved								30,000			√		STDA	GPS/LUSPA / Traditional Leaders
Construct 1No Police Post to beef up security in the District.	Dzorgborve/ Klonu	Lack of police post	Police post constructed						300,000					√		STDA	GPS
<b>Objective:</b>																	
<b>Programme: improve implementation of Assembly's Plan through citizens participating in planning, budgeting, revenue, and expenditure tracking at all levels</b>																	
Prepare and ensure effective implementation of	Sogakope	Routine Activity	National Anti-Corruption						40,000		10,000			√		STDA	NGOs/DPs/V RCC

**2026 COMPOSITE ANNUAL ACTION PLAN: SOUTH DISTRICT ASSEMBLY**

Project	Location	Baseline	Output Indicator	Time Frame				GOG	Cost				Project Status		Implementing Institution/ Department		
				Q 1	Q 2	Q 3	Q 4		DACF	DAC F-RFG	IGF	Others	New	Ongoing	Lead	Collaborating	
the National Anti-Corruption Action Plan (NACAP), Annual Action Plan & Composite Budget			Action Plan (NACAP), Annual Action Plan & Composite Budget prepared and submitted														
Undertake participatory supervision, monitoring, evaluation & auditing of development projects & programmes	Selected Project Communities	Routine Activity	participatory supervision, monitoring, evaluation & auditing of development projects & programmes conducted					60,000		40,000			√			STDA	NGOs/DPs/V RCC
Provide needed logistics and funds to support the production and utilization of statistics for development of the District	Sogakope	Lack of logistics and funds to support the production and utilization of statistics	Logistics and funds provided					5,000		10,000			√			STDA	Statistical Dep't

**2026 COMPOSITE ANNUAL ACTION PLAN: SOUTH DISTRICT ASSEMBLY**

Project	Location	Baseline	Output Indicator	Time Frame				GOG	Cost				Project Status		Implementing Institution/ Department	
				Q 1	Q 2	Q 3	Q 4		DACF	DAC F-RFG	IGF	Others	New	Ongoing	Lead	Collaborating
Update the District Development Data Platform quarterly	Assembly	Routine Activity	District Development Data Platform updated							5,000			√		STDA	Statistical Dep't/ VRCC
Organize Quarterly DPCU and Budget Committee Meetings	Assembly	Routine Activity	DPCU and Budget Committee meetings organized					15,000		17,000			√		STDA	
Hold ½ yearly and End of Year Plan Review Meetings	Assembly	Routine Activity	½ yearly and End of Year Plan Review conducted							10,000			√		STDA	
Prepare and Implement Popular Participation Action Plan	Entire District	Routine Activity	Popular Participation Action plan prepared							5,000			√		STDA	

## 2026 COMPOSITE ANNUAL ACTION PLAN: SOUTH DISTRICT ASSEMBLY

### INTERNATIONAL RELATIONS

Project	Location	Baseline	Output Indicator	Time Frame				Cost				Project Status		Implementing Institution/ Department	
				Q1	Q2	Q3	Q4	GOG	DACF	IGF	Others	New	Ongoing	Lead	Collaborating
<b>Objective:</b> Attract and retain mutually beneficial and sustainable partnerships between the private sector in Ghana, international businesses, and Ghanaians in the Diaspora															
<b>Programme:</b> Programme to promote partnerships between the Assembly and Ghanaians in the Diaspora mutually benefit															
Establish Sister City relations to promote Cultural Exchanges for development	Sogakope								50,000	40,000		√		STDA	MoLGCRA
Enter into Partnerships with Ghanaian Resident Abroad to boost local economy	Sogakope								60,000	20,000		√		STDA	MoLGCRA

## CHAPTER FOUR

### 4.0 MONITORING AND EVALUATION

#### 4.1 Introduction

The effectiveness of policies, programmes and projects are achieved through effective processes of monitoring and evaluation. Monitoring and Evaluation are to assist in the effective implementation of a plan/ programme/ project, and identify lessons that may be useful for future projects. The monitoring and evaluation of these projects will be done via the use of municipality monitoring systems or by the Municipal Assembly and the various stakeholders who would sponsor. This will help ensure that input delivery, work schedule and expected output matches the details of the plan.

The Municipal Assembly will facilitate the implementation of the plan. The essential actions needed to ensure effective implementation will include but not limited to the following:

- Maintenance of security, peace and public order in the entire municipality
- Co-ordination of planned programmes and projects of the various units (i.e. Area Councils, Decentralized Departments / Agencies, CSOs and the Private Sector)
- Strict adherence to execution of planned development programmes
- Strengthening of the Area Councils and unit committees to undertake community development initiatives.
- Promotion of justice, human rights and civil liberties
- Promote public education in civil rights and obligations.
- Organization of an efficient system of revenue mobilization
- Promote co-operation and coordination among public and private agencies involved in socio-economic development

#### 4.2 Monitoring and Evaluation Arrangements

Monitoring and evaluation of projects and programmes within the planned period will be mainly undertaken by the Municipal Planning Co-ordinating Unit (DPCU), stakeholders and the communities.

Monitoring and evaluation reports of projects and programmes will be completed according to the formats provided by the National Development Planning Commission (NDPC), as indicated in the later parts of this chapter. Summaries of the reports will be made available for the Executive Committee (EXECO) of the Assembly. Copies of the reports will then be forwarded to the Regional Coordinating Council (RCC) through the Regional Planning Coordinating Unit (RPCU).

##### 4.2.1 Monitoring Reports

Project monitoring normally starts at the time when the actual project implementation begins. Actual monitoring plan (specifying who is responsible for monitoring, at what time the monitoring should be done as well as what will be monitored) will be prepared in advance. Statistical tools such as bar charts and graphs will be prepared to display to indicate the progress of each project during the implementation period.

## 2026 COMPOSITE ANNUAL ACTION PLAN: SOUTH DISTRICT ASSEMBLY

The various stakeholders as well as their respective responsibilities in the monitoring process will be indicated in the monitoring plan. Dissemination of the report to the widest possible agencies and personnel affected is essential.

The monitoring report will be presented according to the following format:

### Programme and Project Monitoring Report

#### A PROJECT IDENTIFICATION

A1 Project Title .....

A2 Project Code No:

--	--	--	--	--	--

(The project code and numbering system will be provided by NDPC)

A3 Project location.....

A4 Implementing Agency (s).....

A5 Monitoring Agency (s).....

A6 date of monitoring.....

#### B PROGRAMME/PROJECT IMPLEMENTATION ONITORING

B1 Topics of monitoring

(These will include standard topics such as progress in physical implementation and financial mobilization and expenditure. Other topics will vary depending on the programme or project. These will be included under B6)

B2 starting date                      original estimate.....

Actual date.....

#### B3 PHYSICAL IMPLEMENTATION

Construction works	Planned to date (%)	Actual to date (%)
Objective A*		
Objective B		
Objective C		

## 2026 COMPOSITE ANNUAL ACTION PLAN: SOUTH DISTRICT ASSEMBLY

### B4 FINANCIAL MOBILIZATION

	Total required (€m)	Expected date (€m)	Received to date (€m)
Domestic resources Local revenue (fees, levies, dues etc) Municipality assembly common fund (DACF) Other government subventions Non-governmental organizations (NGOs) Community Commercial loans Total financial resources			

### 5 PROGRAMME/PROJECT EXPENDITURE

	Planned total (TEC) (€m)	Planned to date (€m)	Actual to date (€m)
Construction materials Vehicles Equipment Labour Contracts Services Others Total expenditure			

B6 other topics monitored

(Note: These related to OVI not covered above)

B7 comments on variations between planned and actual programme / project expenditure (of B5 items)

#### 4.2.2 Evaluation Reports

The purpose of post facto evaluation is to ascertain whether the resources invested are producing the expected level of outputs and benefits. The first comprehensive evaluation will be undertaken approximately one year after the completion of the project when the impact of the programme or project should be evident. The first post facto evaluation can take place on completion of the project. However, this will generally provide information on timing, resources mobilization and expenditure only.

The evaluation report will be prepared according to the following format.

## 2026 COMPOSITE ANNUAL ACTION PLAN: SOUTH DISTRICT ASSEMBLY

### PROGRAMME AND PROJECT EVALUATION REPORT

#### A PROJECT IDENTIFICATION

A1 Project Title .....

A2 Project Code No:

--	--	--	--	--	--

(The project code and numbering system will be provided by NDPC)

A3 Project location.....

A4 Implementing Agency (s).....

A5 Evaluation Agency (s).....

A6 Date of Evaluation .....

B the evaluation will cover all of the items listed below. Additional items may be inserted as appropriate.

#### B1 Objectives

- Have the programme/project objectives been achieved?
- Are the programme/project objectives still relevant?
- Has the programme/project supported the policy(s) as planned?
- Where the programme/project objectives have not been achieved, give reasons
- State any policies which need adjustment and give reasons for those objectives which are shown to be no longer relevant as a result of the evaluation

#### B2 Time and Finance

- Was the project completed in the time planned? If not, state length of over run
- Was the project cost within the amount estimated? If not, state amount of over (or under) expenditure
- Did funds come on-stream as planned and anticipated? If not, what short falls occurred?
- Are recurrent costs within the planned level? If not state over expenditures
- Where over-runs, over expenditure and funding shortfalls have occurred, give reasons in full and state how these events can be avoided in the future.

#### B3 Beneficiaries and benefits

- Are the benefits reaching the targeted beneficiaries? If not state beneficiaries not being reached
- Are the benefits reaching the number of beneficiaries planned? If not, state shortfalls
- Are the benefits at the planned quantitative and qualitative level? If not state short fall.

## 2026 COMPOSITE ANNUAL ACTION PLAN: SOUTH DISTRICT ASSEMBLY

- Are revenues at the planned level? If not, state short fall. (For programmes/project designed to be revenue earning only).
- Where planned targets, in terms of benefits and beneficiaries, have not been achieved give reasons in full and state how the situation will be avoided in future.

### B4 operations

- Is the project operating at the planned level? If not state deficiency.
- Are the programme/project assets being properly maintained? If not, state areas of failure
- Where appropriate, state reasons for failure

### B5 Summary

Summarize B1 – 4 giving an overall picture of success and failure and the lessons which have been learned in carrying out the programme/project. The summary should deal with all adjustments and changes where appropriate, must be made to

- Overall municipality policies and priorities
- Municipality sectoral polices
- The programme/project category at issue
- Other programme/project categories

Where future action is required, this will be stated in detail including when and by whom the action is to be taken

## 4.3 CONCLUSION

This Annual Action Plan preparation has gone through all the stages of the planning process. The key feature of this plan is the active involvement of citizens at all stages through consultations, community technical interface as well as secondary data from the Ghana Statistical Service. The plan has also identified key development problems as well as other issues that breed poverty and hinder economic growth in the new Municipality.

It has also been realized that the Municipality relies more on externally generated funds for implementing the development projects. There is therefore the need to increase the tax base of the Municipal to reduce over reliance on the central government funds. Also, there is the need for the Assembly to exploit the available potential resources in the Municipality to aid its development process.

Since the Development Plan of the Municipality provides the framework to stimulate growth and reduce poverty, there is the need to ensure that resources are actually committed to the various programmes and projects as planned.